



A Monthly Publication for Temple Beth-El,
Las Cruces, New Mexico

FEBRUARY 2017 (SHEVAT-ADAR 5777)



Shabbat Services (See Page 2)

Friday, February 3- Family
Shabbat Service at 6 pm—Potluck Dinner
following

Friday, February 10-Shabbat Service at 7 pm

Friday, February 17-Shabbat Service at 7pm

Friday, February 24-Shabbat Service for
Renewal of Spirit at 7 pm

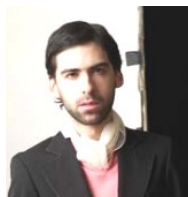
Saturdays

Talmud Study at 9:00 am, Shabbat Service at
10:15 am, followed by a potluck Kiddush

American Values, Religious Voices” A Local Discussion

On Tuesday, February 7, at 6:00-7:15 pm, at Temple Beth-El, Rabbi Larry Karol will host an initial community conversation on the new project, “American Values, Religious Voices.” As part of this campaign, scholars of religion from around the country are sending a letter a day to our newly elected and appointed national leaders to highlight the role of values in guiding both citizens and leaders. The daily letters can be found at www.valuesandvoices.com (you can subscribe to receive one each day via email). Please email Rabbi Karol at rabbil@tbelc.org or call Temple Beth-El at 575-524-3380 if you plan to attend this program.

Make sure that you save the date, Sunday, February 19th at 7 pm for a free Piatigorsky Foundation concert with clarinetist, Igor Begelman and pianist Yoni Levyatov. A native of Kiev Russia, Begelman received degrees



from both the Manhattan School of Music and Julliard. Russian-born Israeli pianist Levyatov made his recital debut at Lincoln Center. Stay tuned for more information about the artist and his accompanist coming in your weekly Eblast.

Join us on Tuesday, February 14 at 7:00 pm as Gilad Kariv, Executive Director of the Israel Movement for Reform and Progressive Judaism (IMPJ), and Ron Bernstein, also from the IMPJ, visit Temple Beth-El to discuss their work in Israel and to share impressions of the current situation there.

On Sunday, February 12, 2017 at 2:00 pm at Temple Beth-El, Daniel Chejfec will speak on

“A Journey from Argentina to Texas”

Daniel Chejfec, Director of The Jewish Federation of Greater El Paso, was born in Buenos Aires, Argentina. He attended the public school and the Jewish Day school which was a secular Zionist oriented school run by the Labor Party.



His first trip to Israel was at the age of 15, where he fell in love with the country and people. After graduating high school, he attended the teachers seminary and college.

While in college, he worked in the Argentine Jewish community as Youth director, Adult Education Director and Counselor trainer. He also served on the National Board of the Argentine Association of Jewish Communal Professionals. He graduated college with a Masters in Education. He moved to the United States, where he received a double masters in Social Work and Jewish Communal Service at the Hebrew Union College-Jewish Institute of Religion.

After college he worked in New Jersey, Delaware, Kentucky, New York and currently Texas. Daniel will be sharing his journey from Argentina to Texas.

This program is sponsored by the Adult Education Committee.



**Sunday, February 12
11:00 am**

TU BISH’VAT SEDER

**Join us as we celebrate
the New Year of Trees!**

Open to all congregants

—please respond to Rabbi Karol by email or call the Temple office.

Worship Schedule

Please note: All 7:00 pm services will include either a Torah reading and a d'var torah, a brief discussion based on the Torah portion, a compilation of prayers and/or songs on the theme of the Torah portion, or a brief D'var Torah that offers an insight based on the parashah for the week.

Friday, February 3-FAMILY SHABBAT

6:00 pm Family Shabbat Service FOR ALL AGES.

Allen Blum will represent the Board of Trustees.

6:45 pm Dairy/Vegetarian Potluck Shabbat Dinner

Saturday, February 4

9:00 am Talmud Study

10:15 am Shabbat Morning Service & Potluck Kiddush

Parashat Bo Exodus 10:1-13:16

Haftarah Jeremiah 46:13-28

Friday, February 10

7:00 pm Rabbi Karol will speak on "Walking with Courage." *Dee Cook and Ann Berkson will sponsor the*

Oneg Shabbat. Ann Berkson will represent the Board of Trustees.

Saturday, February 11

9:00 am Talmud Study

10:15 am Shabbat Morning service & Potluck Kiddush

Parashat Beshalach Exodus 13:17-17:16

Haftarah Judges 4:4-5:31

Sunday, February 12

11:00 am TU BISH'VAT SEDER

Join us as we celebrate the New Year of Trees with a modern adaptation of this ritual that celebrates our ties to nature and to the land of Israel. Open to all congregants—please respond to Rabbi Karol by email or call the Temple office.



Friday, February 17

7:00 pm Shabbat Evening Service—Rabbi Karol will speak on "Considering Leadership." *Tammy Tellez, Aggie Saltman and Rebecca Berkson will sponsor the Oneg Shabbat in honor of Sadie Carvlin becoming Bat Mitzvah. Ellen Torres will represent the Board of Trustees.*

Saturday, February 18

NO TALMUD STUDY

10:00 am Sadie Carvlin, daughter of Tammy and Luis Tellez and Michael and Missy Carvlin, will become a Bat Mitzvah during this Shabbat morning service. A Kiddush luncheon will follow the service.

Parashat Yitro Exodus 18:1-20:23

Haftarah Isaiah 6:1-7:6, 9:5-6

Friday, February 24

7:00 pm Shabbat Service for Renewal of Spirit, featuring special music and prayers for healing within our Shabbat liturgy. *Brenda Parish and Paula Kramer will sponsor the Oneg Shabbat. Sue Brown will represent the Board of Trustees.*

Saturday, February 25

9:00 am Talmud Study

10:15 am Shabbat Morning Service & Potluck Kiddush

Parashat Mishpatim Exodus 21:1-24:18

Shabbat Shekalim Exodus 30:11-16

Haftarah II Kings 12:1-17

Friday, March 3-FAMILY SHABBAT

6:00 pm Family Shabbat Service FOR ALL AGES.

Erich Zameret will represent the Board of Trustees.

6:45 pm Dairy/Vegetarian Potluck Shabbat Dinner

Saturday, March 4

9:00 am Talmud Study

10:15 am Shabbat Morning Service & Potluck Kiddush

Parashat Terumah Exodus 25:1-27:19

Haftarah I Kings 5:26-6:13

BOARD OF TRUSTEES 2016-2017

President-Ellen Torres

Vice-President-Ned Rubin

Secretary-Renee Frank

Treasurer-Allen Blum

Ann Berkson Sue Brown Pearie Bruder

Diane Fleishman Michael Lieberman

Susan Michelson Erich Zameret

Jeff Lewis (Mensch Club)

Dee Cook (Sisterhood)

Rabbi Lawrence P. Karol

The next Board of Trustees Meeting will be held on Thursday, February 16 at 7pm.



Message from Rabbi Karol

I have been thinking a lot lately about leadership, and about humility. That usually happens when new national leaders take the helm and a pattern emerges of how statements are issued and policies are created.

I have also been thinking about leadership as a member of Temple's Leadership Development Committee. Temple president Ellen Torres has been reporting in her articles on this group. To stimulate thought and discussion on this topic of leadership, we all read materials from the Union for Reform Judaism and responded to particular ideas that were presented, creating our own individual reflections on what it means to be a leader in a congregation. Each of the statements had something different to add to our "leadership landscape." I want to share with you my piece on leadership and add some comments as well.

"Being a leader and a role model"

I believe in a collaborative leadership approach that places leaders in a position to guide, to suggest, to develop ideas without judgment, to listen to new perspectives, to engender partnerships with other leaders and, in a congregation, with the rabbi. Sharing a vision that will enable the rabbi and Temple leaders to grow together would be the goal, with congregants offering a foundation through their participation. Being a role model in a congregational context, for me, comes from how I experienced my parents' leadership in their many years of service in Temple life, as well as other individuals I have known who have served congregations with distinction. My role model criteria list, in the ideal, would be:

*Commitment to the congregation's goals/vision

*Persistence in making Judaism come alive in the community

*Trying to engender a feeling of spiritual uplift for all who enter, including for oneself

*Integrity

*Honesty

*Patience

*Kindness

*Humility

*A sense of the holy, whether within the tasks themselves performed as a leader, or in applying to volunteer service an understanding of Jewish teachings that grow out of the holidays (rest from "doing the business of congregational life" for Shabbat, freedom for Passover, dedication for Chanukah, restoring relationships to equilibrium for the High Holy Days).

*Being welcoming to every soul who walks into the

building or attends community events so that others will do the same.

Humility is an integral part of leadership. At the Wednesday breakfast on January 26, I presented Jewish views on "Humility," a topic that was discussed at our annual Interfaith conversation sponsored by the Adult Education Committee in November. As I prepared for the Wednesday breakfast talk, I was reminded of the great value of the Musar Movement in Judaism of the 19th Century (and earlier), which developed the concept of "measures" (Middot) of character that people could study in order to develop and strengthen their own integrity. In his book *Everyday Holiness*, Alan Morinis, a contemporary advocate of exploring the principles of the Musar movement, placed humility at the foundation of personal character development. Some of the practices based in humility that are cited in Musar literature are: deference, forbearance (being slow to anger and refraining from responding to a slight directed at us), appreciation of the time we have on earth, habitually honoring others, attention to the blessings that have come our way, and honoring the One who provides us with those blessings.

When I asked those who were present at the breakfast about the traits of people whom they consider humble, they produced the following list, which includes traits and approaches that any leader should consider in his/her practice: thinking of "we" instead of "I"; putting the needs of others first; making others feel valued and appreciated; using discretion; being a good listener; being a facilitator/negotiator who sees his/her partners as full equals; being able to laugh at oneself; being open-minded; showing respect to everyone; seeing something superior to you in every person; doing/giving for the love of doing/giving; recognizing one's limitations; exhibiting modesty (including about one's accomplishments); and acknowledging God as the source of everything and as a reason for our humility.

We often speak of the word "spirituality" in our conversations about religion and faith. I believe that it is a sense of the holy, of living in our own time or in our own Jewish perspectives, as well as an approach to life that identifies a divine presence as a constant companion, that is the beginning of a spiritual life. Whether one is a leader or a member at this particular moment, all of us have the potential to lead, teach, listen, learn and seek to better ourselves as a part of a caring community. That is the task that we can humbly take on with a sacred sense of responsibility for the present and the future.

*L'shalom,
Rabbi Larry K.*



President's Message

Dear Congregants:

On Saturday, January 21, we held our annual, Board-sponsored congregational dinner, called "FestivUS," which was enjoyed by all who attended. We received many positive comments about

the food, the opportunity to mingle with fellow members, and the sense of community. We hope this type of event helps to strengthen our bonds as a Temple family and to enhance the importance of welcoming everyone into our humble abode. It was especially moving to introduce and celebrate our new members with certificates and flowers, after our Havdalah service. Welcome to Lionel and Rose Jacobs, Gill and Becca Krebs, Beth and Jamie Tierney (and daughters Morgan and Lindsay), Joanne Turnbull, Simone Pier Heymann and Cecilia Galban, and Diana and Monte Blum. We are thrilled to have you join our TBE family as members! Thank you, as well, to our Board members who helped to organize and plan this event. It demonstrated remarkable teamwork and collaboration, which is so valuable to our continuing work together. On February 9-12, I will be attending the URJ Scheidt Seminar for Temple Presidents in San Diego. My hope is to learn a lot and to bring back much needed valuable information and contacts to help us into the future. I will take lots of notes and share what I've learned at our February Board meeting. I am funding this myself, just as a point of information.

On Monday, January 23, Robyn Helzner, renowned singer and performer, presented "Kreplach and Dim Sum—Yes, There are Jews in China!" Helzner shared stories, photos, videos, and music to explore the extraordinary history of the Jewish communities in Beijing, Hong Kong, Shanghai, and Kaifeng, and traced their emergence within the fastest growing region in the world. The event was sponsored by a grant from the Jewish Federation of Greater El Paso, written by our grant writing team of Bill Stein, Alison Mann, Sue Brown, Irv Ross, Rabbi Karol, Jane Grider, Tanah Hemingway (editing) and me. We were awarded a \$13,142 grant by the Jewish Federation to sponsor a Scholars-in-Residence program at TBE. Nearly 120 people attended the program from the larger Las Cruces-El Paso community. We are very excited by the response to our cultural programs and have several more planned for 2017.

As you know, at the Special Congregational Meeting on November 10, Temple members voted to have us negotiate a contract with the Rabbi. I selected Ned Rubin, our Vice President, Patrick Quinn, and Bill Stein to partici-

pate with me on the negotiation team. We met a few times as a team to write the contract, one that is very similar to the last contract, and then shared this contract with the Rabbi. We finalized the process in an amicable manner. In consonance with the Guidelines for Rabbinical Congregational Relations, established by the Central Conference of American Rabbis, the Rabbi and the congregation have a three-year contract that will begin on July 1, 2017 and conclude on June 30, 2020.

I continue to thank you all for your dedication and work on behalf of Temple Beth-El, to remind you to embrace inclusiveness and tolerance, and to continue working together to strengthen our Wisdom, Community Spirit, Tzedakah, and Sacred Purpose.

*Shalom,
Ellen Torres*



**JEWISH
FOOD FOLK**

festival

Temple Beth-El
Las Cruces, NM

Sun. April 23, 2017

11 AM - 3 PM

Calling all Volunteers!

Bring a Friend Outside of TBE to Volunteer!

New This Year: Sign up for Time Slots Only

10:30 AM – 1 PM

12:30 PM – 3 PM

(Time overlap by design. If sign up both shifts, relief available for lunch break.)

Booths will be assigned to volunteers in April.

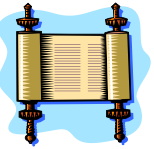
If you request a particular booth, we will do our best to accommodate your request. Flexibility is appreciated. Inform us of any special needs.

No signuugenius.com this year due to simplified format.

**Contact Volunteer Coordinator Rose Jacobs now!
arejay11@icloud.com or 512-680-2783**

ADULT EDUCATION

Culture תורה Holidays עבודת Customs

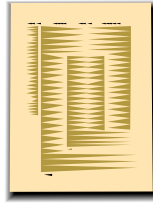


TANAKH STUDY (ISAIAH):

Led by Rabbi Karol on
Wednesdays at 10:15-11:20 am

LAY-LED TALMUD STUDY

Talmud students have been meeting every Saturday at 9:00 am for the past 23 years. New students are always welcome. Contact Tanah Hemingway (524-4329) or Erich Zameret with any questions. The Saturday morning service immediately follows.



Judaism: Roots and Rituals—

An Introduction to Judaism

presented by Rabbi Larry Karol

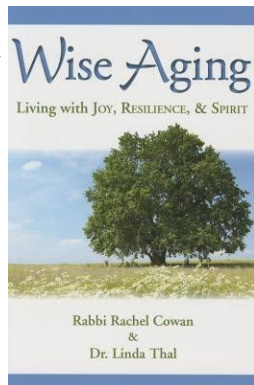
A course on selected Tuesday nights at
7:30-9:00 pm on February 7, 13 (Monday) and 21.
(schedule subject to change)

Text: *Essential Judaism*, by George Robinson

This course is especially designed for adult learners, seekers and explorers who want to know more about Judaism and Jewish life! (Materials fee for this course is \$54.00). Please let Rabbi Karol know if you plan to attend, by calling Temple Beth-El at 575-524-3380 or by sending an e-mail to Rabbi Karol at rabbi@tbelc.org.

Wise Aging Discussion Group

Join us on Wednesdays, February 1, 15 and 22 and March 1 at 7pm as we continue a discussion series on the book *Wise Aging*, by Rabbi Rachel Cowan and Dr. Linda Thal. Rabbi Karol will lead these conversations. The book is available from Behrman House publishers as well as on amazon.com and barnesandnoble.com. Please let Rabbi Karol (rabbi@tbelc.org) know if you plan to attend.



“Kreplach and Dim Sum” with Robyn Helzner on Monday, January 23, 2017



An audience of 120 people from Temple Beth-El and from the greater Las Cruces community gathered at Temple on Monday, January 23, 2017 for Robyn Helzner's program on Jews in China. Our Temple choir joined with Robyn to begin the program with a popular nigun, and she then began her presentation, recounting the history of how Jews came to live in that part of the world and sharing images and experiences from her time spent in Beijing, Shanghai, Hong Kong and other places as well. A significant cadre of Temple members provided refreshments following the presentation as most who attended stayed to socialize and to meet Robyn as she sold her albums. Many thanks to the Jewish Federation of Greater El Paso, which provided a grant that supported this program. Everyone should know that Robyn thoroughly enjoyed her visit to Las Cruces!!!!



Temple Beth-El's

Jewish Women's Spirituality group,

led by Susan Lapid, is still meeting periodically.

For more information,

contact Susan Lapid 496-5758, sblapid@gmail.com or
Leora Zeitlin 639-4475, lzeitlin@cs.nmsu.edu.

FestivUS 2017 on January 21 brought together nearly 90 congregants and future members for fabulous appetizers, a delectable dinner, and tasty desserts. The evening began with Havdalah and a ceremony welcoming new members of 2016-2017. A warm thank you to the Board of Trustees for providing a wonderful evening !



Seventh Night of Chanukah Celebration—Friday, December 30, 2016



WEEKLY TEMPLE BREAKFAST

Weekly breakfasts and discussions of topics of Jewish and general interest are held at the Temple every Wednesday morning. Breakfast begins at 8:45 am, speaker presentations begin at 9:00 am. The cost is \$2.00 weekly or \$6.00 monthly. Please contact Phil Alkon for information at philipalkon@gmail.com or 575-524-6945)

Adelante Deadline

The deadline for turning in articles, items and photos for the February 2017 Adelante is February 20. The 20th of the month is the monthly deadline. Please do your best to keep to that schedule to facilitate a timely completion of the Adelante!

Office Hours

On weekdays, Rabbi Karol is in the office every day except for Thursday. Times vary, but you can mostly count on finding Rabbi Karol in the office on Mondays and Tuesdays at 10:00-11:30 am (and Fridays while he is preparing for Shabbat worship) and on Wednesdays at 11:30am-12:30 pm. Ruth Rubin is volunteering in the office on Tuesdays at 10:30am until 11:15 am. Please call before you come (575-524-3380), or email Rabbi Karol at rabbikarol@tblc.org or rablpkarol@gmail.com. You can also contact Rabbi Karol to make an appointment. Thank you!

From Alison Smalley Mann: The Closing of Beth Abraham



My cousin Mort sent an email with the news that due to a lack of membership, the synagogue, Beth Abraham in Auburn, Maine, was closing. Mort was asking if any former members, or children of

former members would be interested in some of the articles left in the synagogue, and if so, who should be contacted. Attached to the email was a photo of an 18 foot stained glass window that my parents, aunts and uncles had given in memory of my grandparents, Leah and Solomon Meltzer with the dates of their births and deaths etched in the glass.

Living in New Mexico now, I had known through family still in Maine that Beth Abraham had come on hard times with most members attending another temple in Auburn. But its demise unexpectedly opened a flood of memories.

My grandparents lived on Laurel Avenue, the same street where the back door of Beth Abraham opened. So when we would walk to services, we would stop at their house. Their driveway was lined with a plant that had small white balls, and my brother and I while waiting for our parents to take us to services, would pinch the white balls between thumb and forefinger and enjoy the resulting pop and gush of liquid.

The synagogue had three levels. The first level had a social hall, kitchen, and a side room where the junior congregation, the children who were younger than 13, had services. Upstairs in the main sanctuary was where the adults had services, with men and women sitting separately, the women on the third level in a balcony overlooking the main floor.

My mother led the junior congregation, and she would read us a chapter of a book about the Fisher family, an immigrant Jewish family in New York City who ate fat dill pickles and had familial conflicts and interesting adventures that, like a movie serial, would make us want to return on the next Saturday to hear more.

On the High Holy days, the Jewish New Year and the Day of Atonement, Yom Kippur, we would dress especially nicely. I remember being impressed that one of the older girls, Joanie Blatt, was wearing a straight skirt and a matching sweater in navy blue, and she looked SO good and I was filled with envy, certainly not one of the emotions that a house of worship should foster! As teenage girls, we sat in the balcony next to our mothers, and listened and participated in the service while whispering to each other. Every once in a while the Rabbi would look up at the balcony and put his finger to his mouth to remind us to keep the noise level down. The idea of the separation of the men and women was to keep the men praying without the distraction of the women, but my father

would often turn from his prayer book, and would look up at the balcony and with a little wave and nod and smile, would make sure that his women were there.

When we would take breaks from day long services on Yom Kippur, we would congregate outside on the front entry way of the synagogue, in beautiful Maine fall weather which, with its crisp cool air and still warming sunshine, would reinforce the freshness and possibilities of a New Year beginning. At those times, the rules of what was allowed on Yom Kippur would be discussed...fasting, of course, but my friend Susan Bean also told me I couldn't tear toilet paper on that day, and no putting on lights, or a myriad of other forbidden actions. Susan also lived on Laurel Avenue, and sometimes on those breaks, we would sneak off to her house, just to have a change of scenery.

When it came time for my confirmation at 13, my mother and the Rabbi had a fight. He had set rules for the educational foundation that was required before confirmation could happen, and I, like my friends, had put in the necessary time and attendance at classes to meet his requirements. But a new arrival to the community had requested that the Rabbi include his daughter in the confirmation class despite her not having met the requirements. The Rabbi agreed. My mother was furious and she and my aunt pulled my cousin and me from the ceremony, although we received the certificate showing we had been confirmed. I probably missed the small gifts that were sometimes given to the confirmands, but one lady, Phyllis Shapiro, sent me a small comb that closed into a silver case, and it was only last year that I had to throw it away because it had finally broken.

Of course the social hall and kitchen were the base of building community among congregants. And you can't have a synagogue without food! Aunt June and my mother were great cooks, and Aunt Ada who was an artist, was always asked to arrange the flowers for special events like Bar Mitzvahs, receptions after services called Onegs, and even a wedding or two. Whenever tzimmis, a mixture of beef, beans, carrots, onions and potatoes, was on the menu, low and slow oven time was required. My mom would drive to Beth Abraham at two in the morning, pull the huge pans of tzimmis from the ovens, turn their contents, return the pans to the oven, and head back home. And on the stage of the social hall, plays were presented. Aunt Caryl, with a lovely voice, played roles in musicals...and even my dad managed a few roles.

A synagogue is called a House of Worship and a House of Learning, and like all houses that we have to leave, all its contents can't go with us. But what we do take with us are the warm memories of the people and events that shaped us within the building's structure, and the hope that should the building continue to survive, those who follow will also grow within its walls.

ISRAEL UPDATE

No Tinkering And No Free Passes by Phil Alkon

Martin Indyk, a veteran Middle East hand and John Kerry's partner in the recent Israel-Palestinian negotiations, doesn't give up easily. Like all previous outside interventions, the U.S.-brokered effort to resolve this thorny conundrum collapsed. But in a recent NY Times op-ed, the enterprising Indyk offers a new approach. Instead of dealing with the difficult "core issues" in the final stages of negotiations, let's tackle a core issue at the outset as a transformational vehicle for promoting a final deal. Indyk's core issue of choice is the contested future of Jerusalem. Who does it belong to – Israel or the Palestinians? Indyk boldly proposes that the U.S. (and the Western World) renounce past objections and finally recognize Jerusalem as Israel's capital. The U.S. would even move its Embassy from the sunny shores of Tel-Aviv to the seat of Israel's government in the ancient Judean Hills. To balance this concession, however, the Palestinians would be granted sovereignty over East Jerusalem as their capital. Although both sides might resist at first, a U.S.-Egypt-Jordan mediation team will eventually succeed in attaining their agreement. Most importantly, the process itself will foster a hitherto unrealized pathway to genuine peace between two independent states, a Jewish Israel and an Arab Palestine. A Holy Land version of the Domino Theory, if you will.

I would argue that the continued failure of outside efforts to induce an Israel-Palestinian peace is attributable to false assumptions regarding the nature of the underlying issues and of the parties themselves. Indyk's plan blithely assumes that the Jerusalem claims of both sides have equal merit. In other words, that an Arab Muslim claim to Jerusalem as a national capital is as credible – in historical, religious and moral terms – as the Jewish claim. Indyk may need reminding that a Palestinian Arab state or an Arab state of Palestine never existed, even during centuries of continuous Arab Moslem rule of the Middle East. The name Palestine (derived from *Philistine*) was coined by a Roman Emperor in order to erase the region's Jewish identity and as punishment for Jewish resistance to Roman rule. Following the Moslem Conquest of the 7th Century, the Levant and its environs were recognized as "southern Syria" in Arab eyes, never as Palestine, let alone Israel. In fact the name Palestine acquired a solely Jewish identity over the centuries. More to the point, Jerusalem itself never served as a capital of any Arab or Moslem political entity.

Even so, would not ceding a part of Jerusalem itself be a worthy and compelling gesture in the interest of peace? After all, Israel and the Jewish people at large are offering treasured portions of their covenantal inheritance in Judea and Samaria so that an Arab Palestine can exist for the first time in history.

Here we run into two further debunked assumptions. First, that peaceful gestures by Israel will be reciprocated; and second, that the ultimate Palestinian goal is a peaceful, independent state. Do they hold water? Of three officially recognized Palestinian political parties, two – Hamas and Islamic Jihad – are explicitly committed to the total destruction of Israel, the extirpation of its "Zionist" population (likely including its Arab as well as Jewish citizens), and the creation of an Islamic caliphate. To date, only the third political party, Fatah – in its incarnation as the Palestinian Authority (PA) – has entered into peace negotiations with Isra-

el. Incorporating Yasser Arafat's PLO, the PA may be an "acceptable partner for negotiations" in many eyes, but hardly harbors a benign view of Jews or Israel. In fact, the PA publicly rejects any Jewish historical identity with Israel as a whole, let alone Jerusalem. Every map issued by the PA depicts the entire region between the Jordan and the Mediterranean as "Palestine," with nary a hint of anything called "Israel". The Arab populations of the West Bank (ruled by Fatah) and Gaza (by Hamas) are indoctrinated by their schools, mosques, media and leadership to believe that Jews have stolen their rightful Moslem Arab holy land and are the sole source of their many ills and failings. This enemy-oriented worldview has long been a root of the many schisms that continue to fracture the Arab Middle East. Even the benefit of a shared common enemy in the Jews has not healed the deep rifts among the Palestinian factions themselves. Do they exist to create a unified civil state, or to erase Jewish claims and aspirations?

And back to Jerusalem. Why should any informed Israeli believe that acceding to a self-declared opponent's invented claim to Jerusalem will further mutual understanding? In fact, from what we have painfully learned of Palestinian motives, conceding Israeli sovereignty to even a part of Jerusalem would only buttress the ambitions of those who claim that Jews have no rights to any part of it. Under Arab pressure and with international acquiescence, UNESCO recently declared that all holy sites in Jerusalem will henceforth be known by their Arabic names only. Jewish history and Hebrew names are *persona non grata*, according to that esteemed body. This illustrates another false assumption underlying the failure of the peace process. Namely, that the Palestinians are entitled to a free pass no matter what they say and do against Israel and Jewish identity; and that the Jewish state must be held responsible for the Palestinians unhappy condition and for the conflict itself. Just ask the UN or the U.S. State Department. As for Indyk's Jerusalem ploy, the poor chap has yet to grasp the point that even the U.S. Embassy in Tel-Aviv resides on Jewish-occupied Palestinian land, as far as our Palestinian "partners" are concerned.

Two final points. First, even the most earnest attempts by outside parties to tinker with solutions to the Israel-Palestinian (Jewish-Arab) conflict are doomed if they continue to accept false assumptions regarding the differing aspirations and values of the opposing sides. Second, the Palestinians are Middle Eastern Arabs and exhibit many of the same cultural dysfunctions that so obviously plague the region as a whole. These include a self-identity rooted in a need for enemies, and a co-lateral inability to accommodate or accept the "others." We can hope that the Palestinians will eventually need Israel more as a potential ally than as an enemy. In the meanwhile, the world might further that essential transformation by starting to apply the same high standards and expectations equally to both sides. Continued free passes will only encourage more bad behavior and tinkering will not work.

Temple Board of Trustees

Meeting Summary – January 19, 2017

The January 19, 2017 meeting of the TBE Board of Trustees was called to order by President Ellen Torres at 7:05 pm. As the Rabbi was not in attendance, the invocation was given by Ellen Torres.

The board went into Executive Session at 7:15 pm and returned to regular session at 8:10, continuing with the agenda. The following actions were taken after returning to regular session.

1. Dee Cook moved to support the President in signing the Rabbi's contract. Pearie Bruder seconded the motion. The motion passed.
2. Sue Brown moved to accept Joanne Turnbull as a new member. Ann Berkson seconded. The motion passed.

President's Report.

1. President Ellen Torres reported that she will be attending URJ's Scheidt Seminar for Temple Presidents in San Diego from February 9-12. There are no funds budgeted for this training, but she believes the training will be extremely beneficial, and has paid for the Seminar on her own. She plans to bring back lots of information that she will share with the Board and congregation.
2. Following up with the Mike Batkin offer to request funds from the Harry Garbar Estate, no decision has yet been made by the Executor regarding any distribution of funds to TBE. A meeting has been scheduled on February 26 with Ellen (as President), Allen Blum (as Treasurer), the Rabbi, and Mike Batkin (at Mike Batkin's request) to discuss the Batkin Fund.

Treasurer's Report.

1. As of December 31, 2016, TBE has received a total of a little over \$114,000 in income. Expenses for the same period have been approximately \$105,000. Since 71% of the dues have been collected as of this same time, there is a concern that we may come up short by the end of the year.
2. Donations received for the Community of Hope Breakfast exceeded expenses by \$253.62. A check has been sent to Community of Hope in that amount with a nice letter wishing them well.

Old Business

1. Report from ad hoc Leadership Development Committee. Ellen distributed a handout from URJ titled "Training for Congregational Boards." Ellen explained that the URJ Strengthening Congregations Program leaders want Board members to reflect on possible workshop topics for an upcoming training.

2. Jewish Federation Grant Proposal Update. Ellen, Sue Brown, the Rabbi, Irv Ross, and Jane Grider met to discuss how to best utilize the funds granted, and how to

meet the requirements of the grant. They developed a questionnaire to give to attendees of the performances asking them to rate the experience. A tally of the responses will be part of the annual review process for the grant. The first scholar/performer will be Robyn Helzner (Jan 23). The remaining grant funds will pay for two out of the three other scholars-in-residence that the group proposed in the grant, depending on the scholars' schedules: Jewish Comedian, Rabbi Bob Alper, and Jewish Culinary Expert and Writer, Tina Wasserman. If future funds are available, the group will attempt to bring in Rabbi Kerry Olitzky, an expert on ethics and aging.

3. ADA Compliance Standards for Bathrooms. This topic was discussed due to a couple of female congregants in wheelchairs having difficulty maneuvering into the bathroom. Allen Blum met with Jerry Silverman to look at the bathrooms and, after measuring the space and looking at the doors, they confirmed that TBE is in compliance with ADA Standards for bathrooms.

4. History Committee Update. Jeff Brown was asked to chair the committee, but he expressed unwillingness to take on such a role until he had been retired for at least a year. Ned spoke with Nan Rubin, who has archiving experience with the Library of Congress, about chairing the committee. She responded positively, and Ned was urged to follow up with her.

New Business

1. Storage. Dee Cook, Sisterhood Representative, reported that there is not enough storage at the Temple, requiring some items be stored off site. This is especially problematic with major events such as the JFFF. She recommends the Temple purchase a portable storage unit to be placed on the grounds so that items can be more easily stored and retrieved when needed. This item will be referred to the Building and Grounds Committee for evaluation.

2. Rabbi's 2017 Parsonage Allowance. The Board reviewed the Rabbi's 2017 Parsonage Allowance. The Rabbi directed the Board to designate his 2017 allowance to be \$19,000. This covers the year starting on January 1, 2017.

The meeting was adjourned at 9:10 pm.

Upcoming B'nei Mitzvah at Temple Beth-El

Sadie Carvlin—Saturday, February 18, 2017
Mateo Garcia-Bryce—Saturday, June 24, 2017
Casey Rosenberg—Saturday, July 29, 2017
Michael Bruder—Saturday, December 2, 2017



Social Action Chavurah

The Religious Action Center of Reform Judaism has been the hub of Jewish social justice and legislative activity from more than 50 years. The Temple Beth El Social Action Committee is looking to follow their lead at a local level and would like to invite all interested congregants to participate in our new Social Action Chavurah, which will meet monthly on the last Saturday of each month.

Chavurah is the Hebrew word for fellowship and we anticipate a fellowship of congregants interested in Jewish social justice. All congregants are invited to participate. The chavurah will hold its first meeting on Saturday February 25th and at that meeting we will discuss the Jewish concept of social justice as we've already experienced it in our own lives as an introduction to and preparation for our future discussions. Each meeting will focus on a different aspect of social justice, based perhaps on an article or a reading, or with a speaker. The group will look at each topic through a Jewish lens with an eye as to how it affects us as Jews in our community of Las Cruces and Dona Ana County.

We'll gather in homes and of course there will be refreshments. The opportunity to host will rotate and the host will be responsible for providing the material or speaker on the topic and for simple refreshments. **The first meeting of the group will be on Saturday February 25th at the home of Susan and Pat Fitzgerald from 7:30 to 9:30 pm (mas o menos). All congregants are welcome to attend. Please RSVP to susanfitzgerald@hotmail.com or 575-405-1739.**

VISITING CONGREGANTS WHO ARE ILL OR HOME-BOUND

At Temple Beth-El, we depend on you, our members, to inform us if you know of someone who needs a visit, especially if they are in a hospital or a rehabilitation or assisted living facility, and also if they are not able to leave their homes due to health-related issues. In order for us to keep our list of who needs a visit current, we ask you to call or email Rabbi Karol (rabbi@tbelc.org) with the names of congregants who you know would like to be visited. We appreciate your cooperation in this area, so that we can be, as much as possible, a truly caring community.

Tzedakah Opportunities at TBE

*Giving to Casa de Peregrinos & El Caldito
Here are longer lists for items needed!*

For Casa de Peregrinos: Peanut Butter and the following Canned foods: Corn, Green Beans, Mixed Vegetables, Fruits, Tomatoes, Pasta Sauce, Tuna, Beans, and Meats
For El Caldito: Spices, Regular Mayonnaise, Beans, Beef and Chicken Soup Stock

Casa de Peregrinos provides staple foods to the needy, and El Caldito provides a hot meal 365 days a year to the hungry in our community. Both organizations are part of the Community of Hope located on the same campus at 999 W. Amador. There are common interests and goals and the food received is often shared between the two organizations in order to best utilize both perishable and non-perishable foods. Please bring something for one or both of these organizations and put your donation in the marked containers in the hallway opposite the Library. For more information or questions, contact the Temple office.



Ladies Clothing Contributions for La Tienda de Jardin

La Tienda de Jardin, located at 335 La Colonia Ave (at the southwest corner of Alameda and Main St), would greatly appreciate contributions of ladies clothing, jewelry, shoes, handbags and household items. La Tienda does the following very well:

- It supports Jardin de Los Ninos, a local charity that takes care of homeless and near homeless children and families.
- Purchases help mostly working women dress appropriately at a fair price.
- The donations help those who donate keep their closets tidy while doing a good deed.
- Items not sold are given to other charities and nothing goes to a landfill.

If you have not visited us, please do. We are open Monday-Friday, 10am to 5pm and Saturday at 10am to 2pm. If a pick-up would help you make your donation or you need more information, please call the Temple office.

Donations**December 15, 2016 through January 27, 2017****General Fund**

- Dee Cook, in memory of Steve Halper
- Betty C. Rosse, in memory of Rose Marie Caplan
- Jack, Cormac Fyffe and Finnegan Duggins, in memory of Joel Glickler
- Robert and Carla Libby, in memory of Harris B. Libby
- Ann and Burt Berkson, in memory of Steve Halper
- Nina Rothman, in memory of Irv Rothman
- Grace Hammesfahr, in memory of Irv Rothman
- Joan Wright Silar, in memory of her parents, Helene F Rosenbaum and Harry A Winkelman
- Dee Cook, in memory of Clinton Cook
- Jeffrey Brown and Cherri Hudson-Brown, in memory of Elaine Brown

Rabbi's Discretionary Fund

- The Fiszbein Family, in memory of Aron Fiszbein
- Ramon, Frima and Jeffrey Marquez, in memory of Alvin Krasner
- Helen Raphael, in memory of Edward Socket
- Irv and Barbara Ross, in memory of Sam Ross
- Alexander and Katherine Fernald, thank you to Rabbi Karol
- Ann and Burt Berkson, in honor of Rabbi and Rhonda Karol
- Ellen and Fred Torres, in memory of Jerome Deutschman
- Ruth Rubin, in memory of Zeena Audrae Geller
- Lionel and Rose Jacobs, in memory of Fanny Jacobs
- Stan and Gerie Muchnikoff, in memory of Jesse J Muchnikoff
- The Fiszbein Family, in memory of George Gorelick
- Bernice Langner, in memory of Hesh Langner
- Leonard Pritikin, in memory of Neysa Pritikin

Frances F. Williams Library Fund

- Frank and Louise Feldman-Baskey, in memory of Jay Feldman
- Mark Steinborn, in memory of Ruth Steinborn
- Louise Feldman-Baskey, in memory of Eva Isaacson
- Frances Williams, in memory of Edward Resnick

Social Action Fund

- Deanna Kessin, in memory of Ken Kessin

Irving Batkin Memorial Scholarship

- Allen and Michele Blum, in memory of Miriam Cutler and Joseph Tashlik

Biblical Garden Brick Walkway Fund

- Art and Wendy Lorbeer, in memory of Morris Goldstein

TEMPLE FUNDS—From the Treasurer

Donations are gratefully accepted for the following:

General Operating Fund—For the day-to-day operation of TBE.

Biblical Garden Fund—To provide the infrastructure for biblical plants and trees, and bricks in the fountain meditation area and on the brick walkway.

Campership Fund—Providing scholarships for Temple students to attend Jewish summer camp programs.

Social Action Fund—For projects that benefit our community and Las Cruces and Southern New Mexico.

Irving Batkin Memorial Scholarship Fund—To support Jewish education for our children (especially need-based scholarships).

Frances Williams Library Fund—To provide books and infrastructure for the TBE library.

Rabbi's Discretionary Fund—Rabbi Karol uses the Discretionary Fund to meet a variety of philanthropic requests as well as to supplement TBE programs.

Rabbi Gerald M. Kane Fund—Provides funds to help further adult education and cultural programming at TBE.

Temple Beth-El Religious School Fund—Supports the regular and special programming planned by faculty, students and the Religious School Committee.

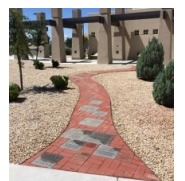
Temple Beth-El Youth Fund—Support for Youth activities at TBE.

Periodically the temple may list short-term projects or needs. Contributions that do not specify a project or fund will be added to the General Operating Fund. If you have a question or wish to contribute to a project not listed here, please contact our Temple Beth-El Treasurer, Allen Blum.

Honor the memory of loved ones with a memorial plaque and mark celebrations and milestones (and also the memory of friends and family) by adding leaves to our Tree of Life and by adding bricks to our Brick Walkway.



brations and milestones (and also the memory of friends and family) by adding leaves to our Tree of Life and by adding bricks to our Brick Walkway.

**Congratulations to:**

- **Frances Williams**, on receiving the **Freedom Fighter Award from the NAACP Dona Ana Branch** at the Dr. Martin Luther King, Jr. breakfast on Monday, January 16, for her years of work at White Sands Missile Range and in local organizations to further the cause of equality.
- **Lisa J. Ehlers McCuller**, who teaches at Arrowhead Park Early College High School, on being awarded the 2016 Dr. Sandra K. Nakamura Professional Development Excellence Award by the Las Cruces Public Schools and the LCPS Professional Development Center.
- **Michael, Stacey, Aaron, Derek and Evan Hyman**, on the upcoming official adoption of James on Thursday, February 2, 2017.

FEBRUARY 2017 (SHEVAT-ADAR 5777)**Yahrzeits-January 29 to March 4, 2017****Read on Friday, February 3 and Saturday, February 4**

Edward Don Arkin, Husband of Anita Rosan
 Elaine Brown*, Mother of Jeff Brown
 Phyllis Orner Chonoles*
 Miriam Cutler, Mother of Michele Blum
 Shmuel Farkas*, Father of Yosef Lapid
 Richard Garner, Father of Carrie Swartz
 Morris Goldstein, Father of Wendee Lorbeer
 Eva Isaacson, Mother of Louise Feldman-Baskey
 Irene Neidich*
 Leonardo Oczon, Father of Aggie Saltman
 Stanley Skigen*, Father of Michelle Skigen
 Joseph Tashlik, Grandfather of Allen Blum

Read on Friday, February 10 and Saturday, February 11

Clinton Cook*, Husband of Dee Cook
 Zeena Audrae Geller, Mother of Ruth Rubin
 Hortense Heart, Grandmother of Nancy Bergman
 Janet Kane, Mother of Rabbi Gerald Kane z"l
 David Kloss*
 Isaac Kruger, Father of Charles Kruger z"l
 Hesh Langner, Husband of Bernice Langner
 Margret Leverett, Mother of Margot Leverett
 Jesse J Muchnikoff, Father of Stan Muchnikoff
 Ethel Paul*
 Neysa Pritikin, Daughter of Leonard Pritikin
 Edward F Resnick*, Brother of Frances F. Williams
 Edward Schoenbrun*
 William Stein, Father of Bill Stein
 Arthur Stern* (Heshel Wolf Ben Mair and Yentl), Father of
 Ann Berkson, Grandfather of Arthur Berkson

Read on Friday, February 17 and Saturday, February 18

Marilyn Chaifetz:
 Lola Davis*
 Jennie Davison*
 Alexander Edwards*, Brother of Peter Edwards
 Irving Glater, Father of Leslie Glater
 Raphael Gordon, Father of David Zeemont
 Samuel Klein*, Father of Sonny Klein, Father-in-Law of Bea Klein
 Benjamin Lampert*, Father of Gabriel Lampert
 Charlotte Ray Mann, Mother of Gary Mann
 Harold Rabinovitch, Father of David Rabinovich
 Samuel Rabkin*
 Christine Radcliff*
 Rose Segreto, Mother of Vera Schwartz
 Dr Edward Weiss*, Father of Diane Bass
 Milton Zeemont, Step-father of David Zeemont

Read on Friday, February 24 and Saturday, February 25

Shimshon Alkon, Father of Philip Alkon
 Shirley Backman, Mother of Judy Kirschner
 Jeanne Brancato, Partner of Joe Bell
 Henrietta Bruder*, Cousin of Murray Bruder

George Cohen*, Father of Susan Brown, Grandfather of
 Marieka Brown
 Louis Druxman*
 Wade W Gardner, Father of Brenda Parish
 Minne Levicoff, Grandmother of Sue Mazer
 Alvin Phinick, Father of Karen Currier
 Yetta Resnick*, Mother of Frances F. Williams
 Charlotte Schwartz*
 Dee Seton Barber*, Mother of Julie Seton
 Reba Tapper, Mother of Dan Tapper

Read on Friday, March 3 and Saturday, March 4

Avraham Ben Isaac Ha Cohen, Father of Tanah Hemingway
 Ruth N. Brooks*, Mother of Sharon Dorfman
 Patricia Collier Ehlers, Mother of Lisa McCuller
 Clifford Evans Sr, Grandfather of Dia Taylor
 Alma Ruth Feil, Mother of Paul Feil
 Lawrence Friedman, Brother of Teddy Weinglass
 Margaret Gantert, Grandmother of Susi Kolikant
 Dori Gorsky*
 Rita Herman, Mother of Avis Herman Lewis
 Carl Isaacson, Father of Louise Feldman-Baskey
 Frances Klein*, Mother of Sonny Klein, Mother-in-Law of
 Bea Klein
 Itzhak Kolikant, Father of Jacob Kolikant
 Bella Krushen*
 Jean Lemelin, Father of Stacey Hyman
 Sonia Seigel*
 David Sicherman, Father-in-Law of Sally Sicherman
 Ruth Sicherman, Mother-in-Law of Sally Sicherman
 Max Steinberg*, Father of Evelyn Bruder
 Dolly Zabin, Aunt of Jeff Brown
 Frances Zimet, Cousin of Helen Raphael

***The Temple Beth-El Family
 extends condolences to:
 Elisha and Jason Rosenberg and family,
 on the death of Elisha's grandfather, William Pierce,
 who died on January 2 in Kilgore, Texas.
 May his memory be for blessing.***

In order to ensure that the name of your loved one will be recited during services, we have instituted the following practices:

- The Hebrew dates for each week's Yahrzeits are listed in each Newsletter.
- Hebrew vs. conventional calendar: The temple's tradition is to base the Yahrzeits list on the Hebrew calendar. Those who wish to have a name read on a Friday night close to the conventional calendar date are asked to please email or call the administrator a few days prior to the service.

*Asterisks at left indicate that a loved one has been permanently memorialized with a plaque in the Temple sanctuary. If you are interested in acquiring a plaque for your loved one, contact the Temple office.

Visit the Temple Beth-El Website
www.tbcl.org
 for in-depth information about Temple and its programming and updates on current Temple events

Temple Beth-El is on Facebook!

<http://www.facebook.com/pages/Temple-Beth-El/115816285166004>

(It is open for all to see!)

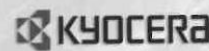
If you are on Facebook already, find our page, click "Like" and join us in our Facebook community!



Temple Beth-El has now become part of Amazon Smile, which offers members of Temple Beth-El an opportunity to participate in Smile Amazon and donates 0.05% of all purchases back to the Temple. To date, we have received \$22.54 in donations. The process is very simple – go to www.smile.amazon.com. You will be required to enter the charity you wish to donate to – just type in Temple Beth-El, Las Cruces in the charity box and this will set the Temple as your charity of choice. Then just shop – pretty easy and also, since many people today shop online via Amazon, it becomes a win-win situation for all.



Telshor Tower Plaza, 755 Telshor Blvd., Bldg. C, Ste. 201, Las Cruces, NM



COPIERS, PRINTERS, FAX

PTS
 OFFICE SYSTEMS INC.
 The Future of Office Technology



PTS Office Systems, Inc.
 2840 N. Telshor
 Las Cruces, NM 88011
 575.524.4384
 575.524.9818 FAX
www.ptsofficesystems.com

Kevin Horner
khorne@ptsofficesystems.com



Willman
 CERTIFIED PUBLIC ACCOUNTANT

Lisa J.O. Willman
 (575) 522-3882
 Fax: (575) 522-3889
 Email: willman@zianet.com
 1744 S. Triviz Dr.
 Las Cruces
 New Mexico
 88001



Tanah Hemingway

(575) 524-4329
 most nights
 P.O. Box 16318
 Las Cruces
 NM 88004

Editing:

Books, scientific papers, theses, dissertations

Technical documents of all sorts.

(for accuracy, continuity, organization, style
 grammar, readability, supportability, etc.)



Ron Bruder

ASSOCIATE BROKER
ronbruder@topproducer.com
 Cell: 575-312-7330
 Office: 575-522-3698

Steinborn & Associates
 Real Estate



Dr. Paul Feil, M.D., ABSM
 Pulmonary Medicine
 Sleep Disorders

2437 S. Telshor Boulevard
 Las Cruces, N.M. 88011
sleepc.com

(575) 522-2777
 Fax: (575) 522-4532



FEBRUARY 2017

Sun	Mon	Tue	Wed	Thu	Fri	Sat
			Shevat 5 1 Wednesday Breakfast 8:45 am Tanakh Study 10:15am Hebrew School 4:45 pm Wise Aging -7:00 pm	Shevat 6 2	Shevat 7 3 Family Shabbat Service 6:00 pm Dairy/vegetarian potluck dinner 6:45 pm	Shevat 8 4 Talmud Study 9:00 am Shabbat Morning Service 10:15 am
Shevat 9 5 Religious School 9:00 am	Shevat 10 6	Shevat 11 7 Values and Voices Discussion 6:00 pm Judaism Class 7:30 pm	Shevat 12 8 Wednesday Breakfast 8:45 am Tanakh Study 10:15am Hebrew School 4:45 pm	Shevat 13 9	Shevat 14 10 Shabbat Service 7:00 pm	Shevat 15 11 Talmud Study 9:00 am Shabbat Morning Service 10:15 am
Shevat 16 12 Religious School 9:00 am Tu Bish'vat Seder 11:00 am Daniel Chejfec Talk 2:00 pm (Adult Education)	Shevat 17 13 Judaism Class 7:30 pm	Shevat 18 14 Gilad Kariv and Ron Bernstein of the Israel Movement for Progressive Judaism at TBE—7:00 pm	Shevat 19 15 Wednesday Breakfast 8:45 am Tanakh Study 10:15am Hebrew School 4:45 pm Wise Aging 7:00 pm	Shevat 20 16 Board Meeting 7:00 pm	Shevat 21 17 Shabbat Service 7:00 pm	Shevat 22 18 No Talmud Study Shabbat Morning Service Bat Mitzvah of Sadie Carvlin 10:00 am
Shevat 23 19 No Religious School Piatigorsky Concert with Igor Begelman 7:00 pm	Shevat 24 20	Shevat 25 21 Judaism Class 7:30 pm	Shevat 26 22 Wednesday Breakfast 8:45 am Tanakh Study 10:15am Hebrew School 4:45 pm Wise Aging 7:00 pm	Shevat 27 23	Shevat 28 24 Shabbat Service for Renewal of Spirit 7:00 pm	Shevat 29 25 Talmud Study 9:00 am Shabbat Morning Service 10:15 am Social Action Chavurah 7:30 pm Fitzgeralds'
Shevat 30 26 Religious School 9:00 am	Adar 1 27	Adar 2 28	Adar 3 Mar. 1 Wednesday Breakfast 8:45 am Tanakh Study 10:15am Hebrew School 4:45 pm Wise Aging -7pm	Adar 4 2	Adar 5 3 Family Shabbat Service 6:00 pm Dairy/vegetarian potluck dinner 6:45 pm	Adar 6 4 Talmud Study 9:00 am Shabbat Morning Service 10:15 am

3980 Sonoma Springs Avenue
Las Cruces, NM 88011
Office Hours:
Monday-Friday, 9:30am--1:30pm
and by appointment

Phone: 575.524.3380
Fax: 575.521.8111

President: Ellen Torres

Rabbi Lawrence P. Karol
rabbi@tbelc.org

The Temple Beth-El Newsletter is produced regularly at Las Cruces, New Mexico. Editor: Rabbi Lawrence P. Karol . Copy Editors: James Rosenthal, Tanah Hemingway. Circulation: Administration Office. We welcome Adelante sponsorships by or for Temple members and non-members. Sponsorships can be mailed to the Temple; receipts are provided upon request. We reserve the right to edit all sponsorships. Nonmember sponsorships \$25/year. One month sponsorship insertions \$108. Annual sponsorship rates as follows: 2x3 business card \$150; Quarter page \$300; Half page \$600. For information about sponsorships or insertions, please contact the Temple Office.

**Temple Beth-El and “Adelante” are on the web at
www.tbelc.org**

February, 2017



**Temple Beth-El
3980 Sonoma Springs Avenue
Las Cruces, NM 88011**