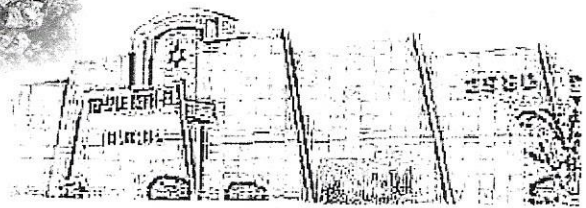


Adelante!

A Monthly Publication for Temple Beth-El,
Las Cruces, New Mexico



SEPTEMBER 2018 (ELUL 5778-TISHREI 5779)

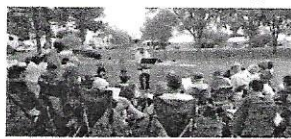


Shabbat Services (See Page 2)

• Friday, September 7— SHABBAT UNDER THE

STARS (FAMILY SERVICE)

AT SAGECREST PARK— Service at 6:00 pm,
followed by a potluck
picnic dinner—hot dogs
provided—please bring a
non-dairy dish to share!



- Friday, September 14—Shabbat Shuvah (Sabbath of Return) Service at 7:00 pm
 - Friday, September 21—Shabbat Service for Renewal of Spirit at 7:00 pm
 - Friday, September 28—Shabbat Sukkot Service at 7:00 pm
- Saturdays
Talmud Study at 9:00 am,
Shabbat Service at 10:15 am,
followed by a potluck Kiddush



SUKKOT AND SIMCHAT TORAH

Sunday, September 23

At 11:00 am, join with Mensch Club members
in building the Temple Sukkah!

At 4:00 pm, join our Religious School faculty and
families in creating and hanging decorations for the Sukkah!
At 5:45, join us for an Erev Sukkot service
in the Sukkah; Pizza dinner following

Monday, September 24

10:00 am First Morning of Sukkot Service, followed by a
holiday Kiddush

Sunday, September 30—SIMCHAT TORAH

Join us to end and begin our cycle of reading
the Torah!

5:30 pm Dairy/Vegetarian Potluck Dinner

6:30 pm Simchat Torah Service

Monday, October 1

10:00 am Simchat Torah/Yizkor Service,
followed by a Mini-Bagel Brunch kiddush



*Singer/Songwriter Chava Mirel will join us for
Shabbat worship on Friday, October 5, at 6:00 pm!*

*Her appearance will be supported by
the Rabbi Gerald M. Kane Adult Education Fund.*



High Holy Days 5779

Selichot

Saturday, September 1, 2018—
7:30 pm

Dessert, Study and Selichot Worship

Erev Rosh Hashanah—Sunday, September 9, 2018

Evening Service, 8:00 pm,

Followed by Rosh Hashanah Oneg,
sponsored by Sisterhood

Rosh Hashanah—Monday, September 10, 2018

Family Service, 9:00 am

Morning Service, 10:00 am

Tashlich at Young Park an hour
following the conclusion of the morning service

Rosh Hashanah, 2nd Day—Tuesday, September 11, 2018

Morning Service, 10:00 am

Bagel Brunch following, sponsored by
Rabbi Larry and Rhonda Karol and
the Religious Practices Committee

Friday, September 14, 2018

Shabbat Shuvah Service, 7:00 pm

Saturday, September 15, 2018

Shabbat Shuvah Morning Service at 10:15 am

Sunday, September 16, 2018

Cemetery Service (Masonic Cemetery), 1:00 pm

Erev Yom Kippur—Tuesday, September 18, 2018

Kol Nidre/Evening Service, 8:00 pm

Yom Kippur

Wednesday, September 19, 2018

Family Service, 9:00 am

Morning Service, 10:00 am

A Time for Sharing (Rabbi Karol), 1:15 pm

Yizkor Reflections Session (Leora Zeitlin), 2:45 pm

Afternoon Service, 4:30 pm

Yizkor and Neilah, 5:45 pm

Break-the-fast, 7:20 pm (sponsored by Sisterhood)

Join us for worship and the warmth of community
as we welcome 5779 together!

*Child care will be provided during Morning Services
from 9:45 A.M. on Rosh Hashanah and Yom Kippur*

Worship Schedule

Please note: All 7:00 pm services will include either a Torah reading and a d'var torah, a brief discussion based on the Torah portion, a compilation of prayers and/or songs on the theme of the Torah portion, or a brief D'var Torah that offers insight based on the parashah for the week.

Saturday, September 1- Selichot

7:30 pm Study/Discussion: "Pirkei Avot: A Social Justice Commentary" - Rabbi Karol will lead a discussion on selected excerpts from Rabbi Shmuly Yanklowitz's new commentary on the ancient text, Pirkei Avot/Sayings of the Rabbis, that have relevance and wisdom for us to consider in our current time.

8:45 pm Havdalah/Refreshments (Please bring a dessert to share)

9:30 pm Selichot Service

Friday, September 7-NOTE LOCATION CHANGE!

SHABBAT UNDER THE STARS FAMILY SHABBAT AND PICNIC AT SAGECREST PARK at 601 N. Roadrunner Parkway—members of all ages are welcome!!!!

6:00 pm—FAMILY SHABBAT SERVICE—*Pearie Bruder will represent the Board of Trustees.*

6:45 pm Potluck Dinner—HOT DOGS PROVIDED—please bring a non-dairy dish/food item to share, and please bring a chair or two!

Saturday, September 8

9:00 am Talmud Study

10:15 am Shabbat Morning Service & Potluck Kiddush

Parashat Nitzavim Deuteronomy 29:9-30:20

Haftarah Isaiah 61:10-63:0

High Holy Day Worship

Sunday, September 9

8:00 pm Erev Rosh Hashanah Service

Rabbi Karol will speak on "Pathways to Happiness."

Followed by Rosh Hashanah Oneg sponsored by Sisterhood.

Monday, September 10—Rosh Hashanah Morning

9:00 am Family Service

10:00 am Congregational Service

Rabbi Karol will speak on "God heard the cry."

Tashlich at Young Park will be held starting one hour after the end of the morning service.

Tuesday, September 11- Rosh Hashanah—Second Day

10:00 am Rosh Hashanah Morning Service for Second Day. Rabbi

Karol will lead a discussion on the Torah reading (Genesis 22).

Followed by a Bagel Brunch sponsored by Rabbi Larry and Rhonda

Karol and the Religious Practices Committee

Friday, September 14-SHABBAT SHUVAH

7:00 pm Shabbat Shuvah (Sabbath of Return) Service, including prayers for renewal and repentance. *An Oneg Shabbat will follow the service. Ruth Rubin will represent the Board of Trustees.*

Saturday, September 15-SHABBAT SHUVAH

9:00 am Talmud Study

10:15 am Service and Potluck Kiddush

Parashat Vayeilech Deuteronomy 31:1-31:30

Haftarah Shabbat Shuvah: Hosea 14:2-10, Micah 7:18-20, Joel 2:15:27

Sunday, September 16

1:00 pm Cemetery Service at the Jewish section of Las Cruces Masonic Cemetery (760 South Compress Rd., between El Molino Blvd. and Brown Rd.)

Tuesday, September 18

8:00 pm Kol Nidrei/Erev Yom Kippur Service

Rabbi Karol will speak on: "Look for the good."

Wednesday, September 19

9:00 am Yom Kippur Family Service

10:00 am Yom Kippur Morning Service

Rabbi Karol will speak on: "A Wellspring of Empathy"

1:15 pm Yom Kippur: A Time for Sharing—*Jewels of Elul* with Rabbi Karol

2:45 pm Yizkor Reflections Session—Leora Zeitlin will lead us in a story-sharing remembrance of loved ones.

4:30 pm Yom Kippur Afternoon Service

5:45 pm Yom Kippur Yizkor and Neilah

7:20 pm Break-the-Fast sponsored by Sisterhood

Child care will be provided during Morning Services from 9:45 am on Rosh Hashanah and Yom Kippur

Friday, September 21

7:00 pm Shabbat Service for Renewal of Spirit, including prayers and music for healing and renewal. *Oneg Shabbat sponsored by Sue and Marieka Brown. Ned Rubin will represent the Board of Trustees.*

Saturday, September 22

9:00 am Talmud Study

10:15 am Shabbat morning service & Potluck Kiddush

Parashat Haazinu Deuteronomy 23:1-52

Haftarah II Samuel 22:1-51

Sunday, September 23

11:00 am Sukkah Building (Mensch Club)

4:00 pm Sukkah Decorating (Religious School)

5:45 pm Erev Sukkot Service

6:30 pm Pizza Dinner

Monday, September 24

10:00 am First Day of Sukkot Morning Service and Kiddush

Friday, September 28

7:00 pm Shabbat Sukkot Evening Service. *An Oneg Shabbat will follow the service. Cheryl Decker will represent the Board of Trustees.*

Saturday, September 29

9:00 am Talmud Study

10:15 am Shabbat Sukkot morning service & Potluck Kiddush

Parashat Shabbat Sukkot Exodus 33:12-34:26

Haftarah Ezekiel 38:18-39:16

Sunday, September 30 -SIMCHAT TORAH

5:30 pm Dairy/Vegetarian Potluck Dinner

6:30 pm Simchat Torah Service

Monday, October 1

10:00 am Shemini Atzeret/Simchat Torah and Yizkor Service, "Bagels with Fixings" Kiddush following

Torah Deuteronomy 34 and Genesis 1:1-2:3

Haftarah First Kings 8:54-66

Friday, October 5—6:00 pm

Join us for a special service featuring Jewish singer/songwriter Chava Mirel adding her unique original music to our worship! A dairy/vegetarian potluck dinner will follow the service.



Message from Rabbi Karol

Jeff Brown and I recently met with Wil Kilroy (NMSU Professor and Theatre Arts Department Head) at Temple to provide a tour of the Temple sanctuary and its symbols. Professor Kilroy is diligently preparing the script for the dramatic presentation of vignettes from

Temple Beth-El history which will be performed on October 7, 2018 at the ASNMSU-CFTA Theatre. Whenever I explain these symbols to visitors to Temple, I often mention, by name, the artists and designers who created the various items on and around the bimah. I point out, as well, that the memorial plaques, the leaves on the Tree of Life, and the bricks on our Brick Walkway and in the Biblical Garden area enshrine the names of congregants and relatives of our members whose lives and life events we have celebrated, and whose legacies we continue to remember.

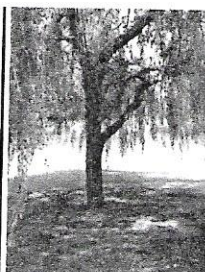
In my recent travels to the Midwest, I visited the sites of the Jewish experiences that shaped my life's path.

My first cousin, Barbara Katz, was my "musical cousin" who could play piano by ear and who wrote songs for children and musicals for adults. Her creativity touched many people in the Kansas City community.



Her death on July 31 took me to Kansas City to be with family for her funeral. While I was there, I attended the Friday night service on August 3 at Congregation B'nai Jehudah in Overland Park, Kansas. My Confirmation

class picture (which also includes the senior rabbi of the congregation, my rabbinic school classmate Arthur Nemtsoff) is still there, as are leaves on the Tree of Life that recall the birth of our son Adam and niece Samantha and other family milestones. On Saturday, August 4, I attended the Sabbath morning service at Beth Shalom Synagogue, the large Conservative synagogue where my parents once belonged and where some of my cousins have been active members. I sat with one of my first cousins and his wife (who help prepare the kiddush after services every week), and I was called up to the Torah for an Aliyah both for remembrance of my cousin and as a "returning rabbi" to the community. Several other members of my extended



family were there that morning. My brother arrived that evening. We attended the graveside funeral on Sunday, and stopped by Rose Hill Cemetery, where our parents are buried, to pay our respects. The willow tree by their markers continues to provide shade from the hot summer sun.

On August 17-19, Rhonda and I traveled to Topeka, Kansas for the 90th Anniversary Gala dinner for Temple Beth Shalom. We arrived in Topeka in June, 1984 and left in July, 2006. There are family milestones noted on their memorial boards, Tree of Life and Children's Wall that span four generations of our family (as is the



case with bricks and leaves on the Tree of Life at Temple

Beth-El). There is a "Rhonda Karol classroom," a plaque noting my 22 years of service to the congregation, and photos of Confirmation classes from 1985 until now. I had been asked to present original songs as part of the entertainment for the evening and to join their

current choir on guitar. It was an honor for us to be present for that congregational milestone. We enjoyed seeing former congregants and friends.

As we enter the new Jewish year of 5779, we have the opportunity to consider the nature of the Jewish legacies we have created until now, whether in physical features commemorating landmark events in our lives, in the learning or programming in which we have participated or which we have helped to develop and sustain, or in partnerships and friendships that we have maintained over the course of many years. There are many avenues through which we can give of ourselves to our congregation to build a stronger community. Whatever we do can reinforce the notion, and the truth, that we are part of something greater than ourselves when we take part in Temple life. May what we do as congregants enable us to strengthen ourselves and each other for yet another year. L'shanah Tovah Tikateivu - may you all be inscribed for a good year!

L'shalom,

Rabbi Larry K.

See rabbilarrykarol.blogspot.com for Rabbi Karol's articles, Divrei Torah and sermons.



Words of the President: *Divrei HaNasi*

When I attended the URJ's Scheidt Seminar for Temple Presidents in February 2017, I was introduced to many important elements that are significant to being president of a Temple. One question they

posed to us stood out—What's my Why? In other words, what is our purpose for engaging in the work of Temple leadership and how do we measure our success? In order to remain a relevant and effective center of Jewish living, we need to give our congregants reasons for investing time and energy in being part of Temple Beth-El. We need to find out what truly matters to our congregants and prospective congregants, to help them enrich their lives through their relationship with the Temple and with its members.

- We need to help congregants build deep relationships with people who will be there for them in difficult times and times of joy.
- We need to build meaning by bringing Jewish tradition and wisdom to the challenges our congregants face.
- And we need to have an impact on our congregants and the world around them.

So our challenge is to identify how well we are doing this. What are we doing well and what are we doing that is not working so well? What should we look at to measure our success; what is our yardstick?

I hope that our recent Board orientation and the work we have set out for ourselves this year will help us to identify these points and to help us to improve what we are doing. So, let's find our Why together and work as a team to make Temple Beth-El a place of deep relationships, meaning, and impact for our congregants and all who join us on this journey.

Fundraising is Crucial to Keeping our Spiritual Home Alive:

Temple Beth-El is an amazing spiritual home where we have built numerous Sacred Partnerships with each other and developed a Temple family that helps support us during happy times and times of need. To maintain this wonderful place of solace, comfort, and friendship, we need to remain solvent. Please continue to support each of these key TBE fundraisers:

- Matzo Ball Open Golf Tournament, Picacho Hills Country Club, Sunday, October 21, 12:00 pm. Join us as a golfer, a hole sponsor, or by donating items for the raffle table. Co-chairs Lynn Zeemont, Michael Mandel, Dee Cook, and Ellen Torres
- Pastrami Booth at the Renaissance Faire, Young Park, Saturday, November 3, and Sunday, November 4. Join us to help set-up and run the booth. Contact Co-Chairs Dave

Zeemont or Jeff Lewis for more information.

- Jewish Food & Folk Festival at TBE, April 2019 (date TBD). Co-Chairs to be announced soon. As always, we need all of you to help with food booths, ticket sales, etc. More information to come soon!

Theatrical Production about the History of TBE and Jews in Las Cruces:

We invite you to attend the following important Temple event--a theatrical production entitled "Personal Stories: A Reflection of the Jewish Experience," to be performed at NMSU Center for the Arts, corner of Espina and University Avenue, on Sunday, October 7 at 2:00 pm. Admission is free and refreshments will be served. This play is derived from interviews with Temple members about the history of Temple Beth-El and the Jews in Las Cruces. This production is funded by a grant from the Jewish Federation of Greater El Paso.

New & Engaging Leadership Series that will be held at TBE:

Our Nominating Committee is sponsoring an upcoming Leadership Series, featuring brief yet engaging workshops on key topics. This series is open to all Temple members and friends, along with our Trustees, of course. We're setting a foundation to build strong leaders, which is crucial to the future and legacy of our temple. These workshops are intended to provide the needed support for those of you who have stepped up or will step up to be involved as Temple leaders. Refreshments will be served. We look forward to your presence!

Leadership Series:

1. Defining Spirituality on Sunday, October 28 at 2 pm, led by Rabbi Karol
2. Leadership Styles and Skills on Sunday, December 16 at 2 pm, led by Ellen Torres
3. Exploring Our Temple on Sunday, February 10 at 2 pm, led by Sue Brown

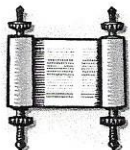
I look forward to seeing many of you at our 5779 High Holy Day services in September. L'Shana Tovah Tikatevu V'taihatem! May you be inscribed and sealed for a good year!

Thank you for your dedication and work on behalf of Temple Beth-El. Continue to embrace inclusiveness and tolerance, and continue working together to strengthen our Sacred Partnership, Wisdom, Community Spirit, Tzedakah, and Sacred Purpose.

*In Sacred Partnership,
Ellen Torres*

ADULT EDUCATION

Culture חברה Holidays מועד Customs



TANAKH STUDY (ISAIAH):
Sessions will resume on September 26.

LAY-LED TALMUD STUDY

Talmud study (in English) has been meeting every Saturday at 9:00 am for the past 24 years. New students are always welcome. No previous background or Hebrew knowledge is necessary. Contact Tanah Hemingway (524-4329) or Erich Zameret (ezmrt35@yahoo.com). with any questions. The Saturday morning service immediately follows.



*The New Mexico Jewish Historical Society
Co-sponsored with Temple Beth El presents:*

"Telling the Stories:

***The Personal Accounts
of New Mexico Jews in Business
and Community Life"***

Join us for an afternoon of sharing the personal stories

of leading New Mexico families who played major roles in the state, including Debra Wechter Friedman from Las Cruces.

WHEN:

Tuesday, October 30, 2018 7:00 pm

WHERE:

**Temple Beth-El, 3980 Sonoma Springs Avenue
Las Cruces, New Mexico**

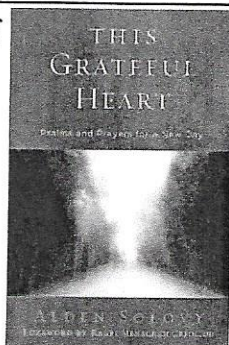
WHO:

**Debra Wechter-Friedman
Howard Friedman**

**Harvey Buchalter, on behalf of the Goldman family
Noel Pugach, Project Director**

Light Refreshments will be served

We have several copies available of *This Grateful Heart*, by Alden Solovy, at a cost of \$15.00 per book. **All books are signed by the author.** Please contact Rabbi Karol if you would like to purchase one of these books.



TEMPLE BETH-EL PLAY AT NMSU

2:00 P.M., SUNDAY, OCTOBER 7

Temple Beth-El received funding from the Jewish Federation of Greater El Paso to conduct 25 oral history interviews. These interviews will provide the main basis for a play to be written by Wil Kilroy, the head of NMSU's Department of Theatre Arts. **The play will be performed at the ASNMSU-CFTA Theatre building (at the corner of Espina and University) at 2:00 pm on Sunday, October 7, 2018.**

All characters in the play will have pseudonyms, and in some cases information from multiple interviews will be melded. The play will include vignettes about Temple Beth-El's members' experiences that will help a general audience to understand more about the Temple, its history and its members. The play will be about one hour in length and will be followed by a Q&A panel discussion. Since the production is funded by the grant, admission is free and refreshments will be served. Please plan to attend and place it on your calendar - thanks!

Save the Date!

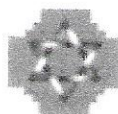
**"Expressing Jewish Identities:
Challenges and Accomplishments"**
**2018 New Mexico Jewish Historical Society
Conference**

November 10-11, 2018

Sheraton Uptown

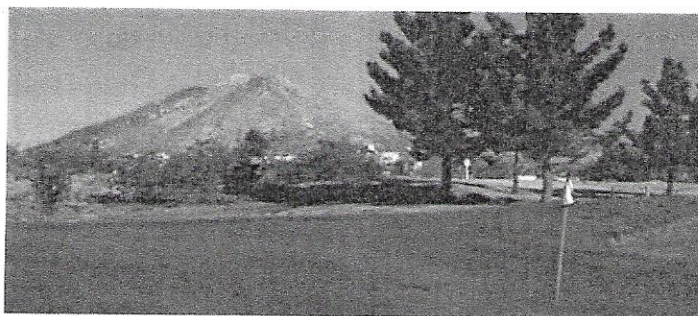
Albuquerque, New Mexico

Register at www.nmjhs.org



New Mexico ESTABLISHED 1985
Jewish Historical Society

**Temple Beth-El's Sixth Annual
Matzo Ball Open
at Picacho Hills Country Club
Sunday, Oct. 21, 2018**



11 a.m. Registration
12 p.m. Shotgun Start Tee-Off
\$100 per player

Temple Beth-El is hosting its sixth annual golf tournament, the Matzo Ball Open on Sunday, October 21, 2018, at Picacho Hills Country Club in Las Cruces.

Registration will start at 11 a.m. at the clubhouse and come enjoy a bowl of matzo ball soup. The format will be a four-person best ball team scramble, which means each player gets to take a shot from their team's previous best shot. Your entry fee per 4-person team includes cart, range balls, dinner (vegetarian option available), as well as a certificate for a complimentary round at PHCC.

We will have a \$10,000 putting contest, longest drive and closest-to-the-pin contests for both men and women. Raffles tickets will be sold throughout the tournament as well as mulligans and 50/50 tickets.

We hope that you will consider being a hole sponsor or make a contribution to our raffle table. Your business or individual name will be advertised at a tee box and in the Temple Beth-El newsletter. Looking forward to seeing you at the tournament.

CALL (575) 523-0913 FOR MORE INFORMATION

"Have you considered a bequest to Temple Beth-El?"

An important part of our future is represented by bequests made by members.

Thoughtful bequests enable Temple Beth-El to retain a future of Jewish life for generations to come. From funding our Rabbi to scholarships at our religious school, your generous gift maintains our financial health.

A simple codicil can be added to your existing will, if you wish to make a bequest, such as:

***"I give and bequest to Temple Beth-El, located in Las Cruces, New Mexico, the sum of \$ _____
[or _____ percentage of my estate as finally determined for federal estate tax purposes]."***

A will or codicil should be prepared by an attorney.

Please call the Temple office at (575) 524-3380 to discuss including Temple Beth-El in your estate.

Board of Trustees Biography: Cheryl Louden-Decker

I'm Cheryl Louden-Decker. I was born in Fort Wayne, IN and grew up in a small suburban town that my father's family helped establish.

My father's maternal ancestors, the Hacketts, were some of the first immigrants to the New World. In the 1600s, three brothers from Ireland jumped ship upon docking in VA. Later generations helped Daniel Boone explore and settle several colonies and my great, great grandfather was a close friend and political ally to Abraham Lincoln. My mother was a stay-at-home mom, always grew a huge garden, baked wonderful pies, and made sure we had books to read and kept active during the summer. Mom was involved in several civic clubs, voter registration and volunteered each election day. My father was an industrial tool designer/fabricator, a local union president and part-time farmer. They owned an 80 acre hobby farm where I had the run of the barns, fields and woods. In the summer I would take a book, a peanut butter sandwich, fill my father's old coffee thermos with water and be gone all day to my hideout in the woods. I started working in the fields and helping with the animals when I was seven. I helped my father assist our livestock to give birth, milked the dairy cattle by hand and helped shear our sheep. My parents instilled in their children the value of an education, the belief in taking care of others, responsibility for our own actions, a strong work ethic and a "can do" attitude. My mother's family, the Krauters, arrived from Prussia in 1846 aboard the ship, Russia, and eventually moved to Toledo, OH. There Daniel and Esther owned a tailor shop. I have known I was Jewish on my mother's side from an early age. I had never attended services or had a great interest in learning about my Jewish heritage until I was in college and took a class in religion. As part of that class, I interviewed a local Rabbi and my never ending quest for additional Jewish knowledge began. I attended the Florence Melton Adult Mini-Schools and took classes at Hebrew Union College-Jewish Institute of Religion, Cincinnati, OH under Rabbi Gary Zola and others. In addition, I decided to study for the HUC-JIR Conversion Class and my husband David, supported, attended and passed the course with me. Because I was born Jewish, identified and had been living a Jewish life for decades, Rabbi Robert Barr suggested I have an Affirmation Ceremony. That happened at Congregation Beth Adam in Loveland, OH. One of my regrets is I do not read, speak or understand Hebrew. The small amount of Hebrew I do know has been gleaned through listening and practicing.

I enjoy living in Las Cruces. The dry desert heat, abundant sunshine, the Organ mountains and the wild, gusting winds suit my nature.

BOARD OF TRUSTEES 2018-2019

President-Ellen Torres
 Vice-President-Jeff Lewis
 Secretary- Jeff Brown
 Treasurer- Michael Mandel
 Sue Brown Pearie Bruder Cheryl Decker
 Diane Fleishman Ned Rubin
 Ruth Rubin Joanne Turnbull
 Luke Duddridge (Mensch Club)
 Dee Cook (Sisterhood)
 Rabbi Lawrence P. Karol

**The next Board Meeting will be held at 7:00 pm on
 Thursday, September 20, 2018.**

UPCOMING LEADERSHIP SCHEDULE

Sunday, Oct. 28 – 2 p.m., Temple Social Hall—
 DEFINING SPIRITUALITY – Rabbi Larry Karol

Sunday, Dec. 16 – 2 p.m., Temple Social Hall - LEAD-
 ERSHIP STYLES AND SKILLS – Ellen Torres

Sunday, Feb. 10 – 2 p.m., Temple Beth-El—
 EXPLORING OUR TEMPLE – Sue Brown

(Other events still under discussion)



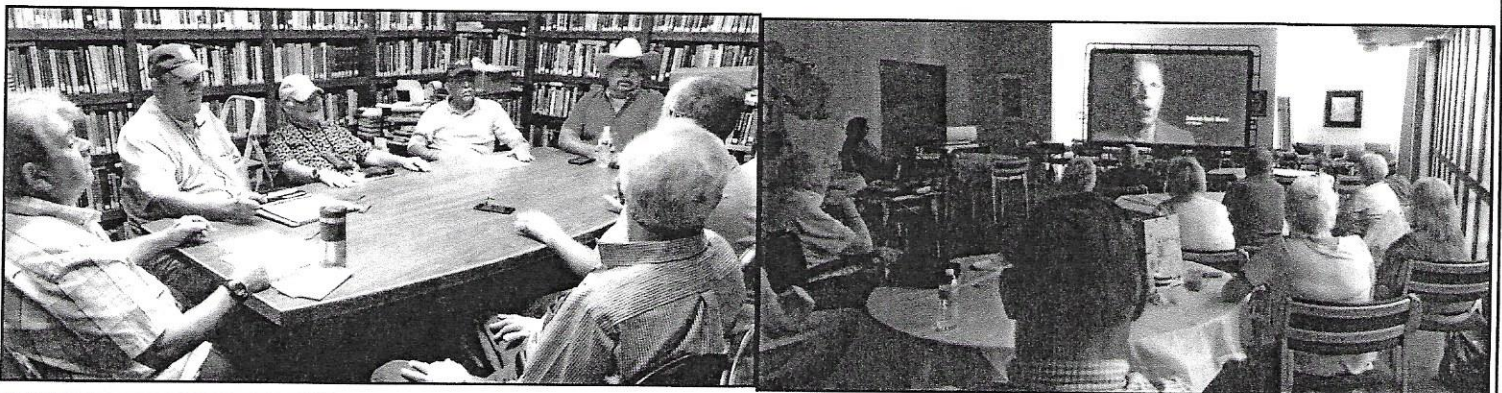
Chava Mirel, a contemporary Jewish singer/songwriter and a talented and eclectic musician, will join us for our Shabbat service on Friday, October 5, 2018 at 6:00 pm to add her music to our worship. Chava will be the featured performer at the Yom Hashir/Day of Song in El Paso on October 7. It is an honor to have her join us on Friday night. A dairy/vegetarian pot-luck dinner will follow the service. Please join us for this special evening!

*Chava's appearance is being supported by
 the Rabbi Gerald M. Kane Adult Education Fund.*

Temple Beth-El Sisterhood Rummage Sale on August 18-19, 2018 and Luncheon on August 26, 2018



Mensch Club Meeting and Screening of "G.I. Jews" (Mensch Club-sponsored) on August 26, 2018



Tribute to Leonard Pritikin

We had the privilege of attending Leonard Pritikin's memorial service, which was held in Silver City on August 10, 2018. The service of military honors at Fort Bayard featured trumpet fanfares, a multi-gun salute, and a flag ceremony. The flag was presented to Leonard's son, Steven. The memorial service was followed by a reception at the Western New Mexico Museum, where Leonard and Geneva had frequently volunteered. In honor of Leonard and how much he meant to Temple Beth-El during his years as a member of our congregation, we would like to share some highlights from Steven's eulogy.

"My dad," Steven began, "was a *mensch*." Steven explained that Leonard grew up being called "Lazer" after Eleazar the high priest—he did not know until he started public school that his name was Leonard. Leonard grew up in Chicago, raised by his Orthodox uncle and aunt after Leonard's parents' divorce. There was a co-housing arrangement with Leonard's father, who worked extremely long hours and so was not available to do most of Leonard's care.

Leonard's father exerted a powerful influence on Leonard; his father's value of warrior Judaism had ended his own educational career when he punched out his eighth grade teacher for making an anti-Semitic remark. For Leonard's father, it was extremely important that Leonard be proud of his Jewish heritage and that he exemplify Judaism in physical strength. He raised Leonard to be a prize fighter, and when that didn't work out, Leonard did the next best thing—he joined the U.S. Marines.

Sent to the Pacific theatre to train for battle, he was on a training exercise working as a machine gunner when a freak friendly fire accident landed a mortar in the gunner's nest, killing Leonard's entire company except for himself. Severely injured, Leonard was transported to a medical tent, where he overheard two orderlies in charge of sorting out the wounded say not to bother treating him, as he wouldn't survive the night, and if he did, they would have to amputate both his legs. Surprising everyone by still being alive in the morning, Leonard gritted out the next two years with over 30 surgeries. His tenacity in getting back on his feet amazed the medical professionals in charge of his

care. To the end of his life, Leonard suffered the painful after-effects of his injuries.

Leonard returned to Chicago, where he married Geneva and started a family, purchased a bar from poker winnings from his Marine buddies, and later trained and became a professional photograph retouching artist, working with famous magazines of the day.

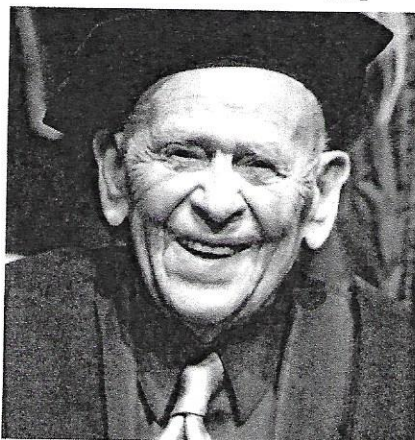
Steven recalled a happy childhood with his parents and sister, although Leonard's passion in visiting Civil War battle sites led to some extremely excruciating trips for his children.

Leonard's avocations were collecting antique firearms and reading non-fiction books about military history, particularly the Civil War and, later in life, the Mountain Men. Upon his retirement, Geneva and Leonard followed the Mountain Men to the western mountains, settling first in Santa Fe, then Silver City, over to Las Cruces when the altitude became daunting for Geneva's health, and Leonard ended his life in his beloved Silver City at the age of 95. Geneva and Leonard continued to give back as involved volunteers in both Las Cruces and Silver City until the ends of their lives. One of Leonard's favorite jobs was as bingo caller at the Legion Hall, which he had done for over 30 years, and continued to do until just weeks before his death.

Another highlight from the Memorial Service was a short speech by a tall, statuesque, tattooed woman. She regaled the assembly with the tale of her last date to the Marine Corps Ball in 2017—a tall, handsome Marine who humbly asked her hand to the dance and was wonderful company at the event, though she had to agree to transport his wheelchair—Leonard Pritikin.

As we were departing, we spoke personally with Steven, who thanked us for coming and thanked the congregation at Temple Beth-El for honoring Leonard's memory with the Kaddish prayer. He told us, "When I was a boy, that was how my dad would introduce me—'My Kaddish.' Thank you for helping me keep my promise to my dad."

Marieka and Jeanne Brown



Temple Beth-El Board of Trustees Meeting Summary—August 16, 2018

The Board met on August 16, 2018. The Rabbi distributed an activities report. The Religious School will have a Sunday-only schedule this year and has 19 students. President Ellen Torres discussed leadership training workshops. Mike Batkin has donated an additional \$5,400 to fund the principal in the Irving Batkin Scholarship Fund. The Board will call to thank TBE members for their participation in the Temple. The Strategic Planning Committee will bring a report to the September 20 Board meeting. Treasurer Michael Mandel noted that dues contributions are higher at this time compared to last year.

Guest Dave Decker discussed Building and Grounds matters. Dave is handling maintenance responsibilities such as grass cutting. He fixed a pothole and removed a dead bush. Dave has purchased painting supplies. He plans to plant a new bush to replace the dead bush, paint parking lot lines, and build a small wall to keep sand from moving into the garbage and recycling area. The Board thanked Dave for his work.

The Renaissance Faire application and check have been submitted. We discussed potential formats and dates for an early February Deli Dinner. The Board also began to discuss a January Congregational Dinner. The Board discussed the October 7 History play and the October 21 Golf Tournament. URJ has agreed to allow a rate of \$4,000 for our annual congregational membership payments for some years. The Board reviewed ideas for grants to bring in speakers and performers that could be submitted to the Jewish Federation of Greater El Paso.

Board Orientation at the home of Ellen and Fred Torres on Sunday, August 12, 2018



WEEKLY TEMPLE BREAKFAST

Weekly breakfasts and discussions of topics of Jewish and general interest are held at the Temple every Wednesday morning. Breakfast begins at 8:45 am, speaker presentations begin at 9:00 am. The cost is \$2.00 weekly or \$6.00 monthly. Please contact Phil Alkon for information at philipalkon@gmail.com or 575-524-6945)

Religious School Orientation on August 26, 2018



Bricks for the Biblical Garden and Brick Walkway

will be ordered again in the coming months. Please consider ordering one to mark that special occasion of yours or a loved one. Call Dee Cook or Alison Mann, and they will send you the form and even help you design the brick, if you wish. And take a few minutes to sit in the meditation area of the walkway...it's a lovely spot!



Ladies Clothing Contributions for La Tienda de Jardin

La Tienda de Jardin, located at 335 La Colonia Ave (at the southwest corner of Alameda and Main St), would greatly appreciate contributions of ladies clothing, jewelry,

shoes, handbags and household items. La Tienda does the following very well:

- It supports Jardin de Los Ninos, a local charity that takes care of homeless and near homeless children and families.
- Purchases help mostly working women dress appropriately at a fair price.
- The donations help those who donate keep their closets tidy while doing a good deed.
- Items not sold are given to other charities and nothing goes to a landfill.

If you have not visited us, please do. We are open Monday-Friday, 10am to 5pm and Saturday at 10am to 2pm. If a pick-up would help you make your donation or you need more information, please call the Temple office.

Donations through August 29, 2018

General Fund

- Bea Klein, in memory of Howard Klein
- Lila Ziegler, in memory of Morton Brandt

Irving Batkin

Memorial Scholarship Fund

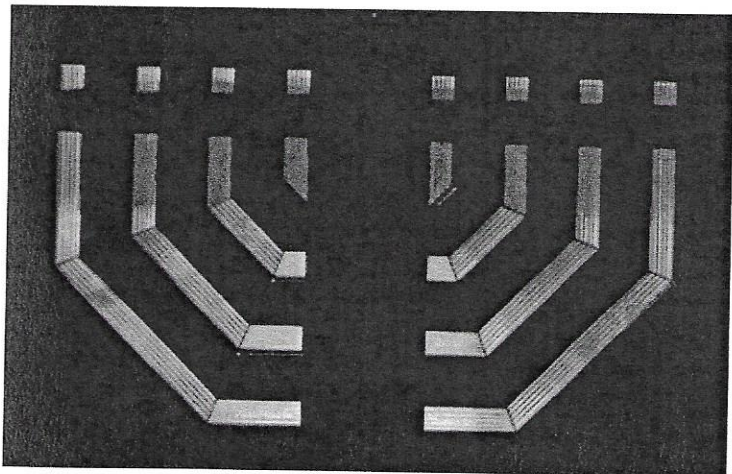
- Mike Batkin

Rabbi's Discretionary Fund

- Cherri Hudson-Brown, in memory of Gloria Hudson
- Ed and Judy Wendell
- Bernice Langner, in memory of Jennie Wagman Freeman
- David and Lynn Zeemont, in memory of Jessie Schindler

Temple Beth-El Youth Fund

- Susan and Yossi Lapid



TEMPLE FUNDS

Donations are gratefully accepted for the following:

General Operating Fund—For the day-to-day operation of TBE.

Biblical Garden Fund—To provide the infrastructure for biblical plants and trees, and bricks in the fountain meditation area and on the brick walkway.

Campership Fund—Providing scholarships for Temple students to attend Jewish summer camp programs.

Social Action Fund—For projects that benefit our community and Las Cruces and Southern New Mexico.

Irving Batkin Memorial Scholarship Fund—To broadly support Jewish education, based on merit or need, through participation in the TBE Religious School, camperships, and/or pursuit of Jewish collegiate studies or rabbinical studies.

Frances Williams Library Fund—To provide books and infrastructure for the TBE library.

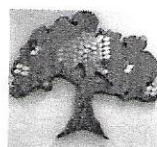
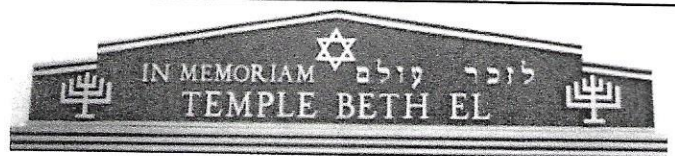
Rabbi's Discretionary Fund—Rabbi Karol uses the Discretionary Fund to meet a variety of philanthropic requests as well as to supplement TBE programs.

Rabbi Gerald M. Kane Fund—Provides funds to help further adult education and cultural programming at TBE.

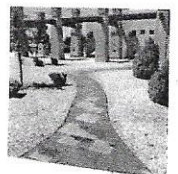
Temple Beth-El Religious School Fund—Supports the regular and special programming planned by faculty, students and the Religious School Committee.

Temple Beth-El Youth Fund—Support for Youth activities at TBE.

Periodically the temple may list short-term projects or needs. Contributions that do not specify a project or fund will be added to the General Operating Fund. If you have a question or wish to contribute to a project not listed here, please contact our Temple Beth-El Treasurer, Michael Mandel.



Honor the memory of loved ones with a memorial plaque and mark celebrations and milestones (and also the memory of friends and family) by adding leaves to our Tree of Life and



by adding bricks to our Brick Walkway/Biblical Garden.

**Yahrzeits-September 2
through October 6, 2018**

(Listings include the name of the loved one
on the yahrzeit list and the name of the congregant or
congregants remembering that loved one—asterisks indicate
loved ones remembered with memorial plaques)

**Read on Friday, September 7 and
Saturday, September 8**

Louis Berkeley (Arthur Berkeley)
Sylvia Blumkin*
Zellie Capin (Bea Klein)
Shari Kandel (Teddy Weinglass)
Joseph Karol (Rabbi Larry Karol)
Ramon Marquez (Frima and Jeff Marquez)
Helen Rothman (Nina Rothman)
Libbie Ryave (Rosalyn Richman & Selma Ryave)
Samuel Smalley* (Alison Mann)

**Read on Friday, September 14
and Saturday, September 15**

Shepley Backman (Judy Kirschner)
Iylene Caplan (Betty Rosse)
Emily Cohen* (Susan Brown)
Isadore Frank*
Bernard Kottler (Marsha San Filippo)
Anna Lampert* (Gabriel Lampert)
Beth Lawrence (David Zeemont)
Richard Meltzer (Colette Meltzer)
Ida Siegel (Carla Libby)
Nathan Siegel*
Arthur Winard (Bea Klein)

**Read on Friday, September 21
and Saturday, September 22**

Fabian Bissonette (Lynn Berkeley)
Yetta Feldman*
Samuel Freeman (Bernice Langner)
Donald Gantert (Susi Kolikant)
Thomas Gatkin*
Blanche Geisinger (Ruth Ann Sugarman)
Benjamin Golden*
Martin Greenfield*
Ralph Holzman*
Mary Krepps*
Ted Levy (Tom Levy)
Herman Limmer*
Gary David Liston (Nina Rothman)
Martin Muffs* (Carol Bernstein)
Sidney Muffs* (Carol Bernstein)
Bill Quinn (Patrick Quinn)

Dorothy Rabinovitch (David Rabinovitch)
Emily Shorr (Susan Michelson)
Rose Sommers* (Frances F. Williams)
Sam Sommers* (Frances F. Williams)
Mabel Stern*

**Read on Friday, September 28
and Saturday, September 29**

Reba Kirschner* (Gabriel Lampert)
Rabbi Joseph Klein*
Robert Krasner (Frima and Jeff Marquez)
Jack Troy (Marsha San Filippo)

**Read on Friday, October 5
and Saturday, October 6**

Lillian Evelyn Bernstein (Marvin Bernstein)
Debra Eckert (Marlene Benz)
Mary Lois Gardner (Brenda Parish)
Benjamin Geller (Ruth Rubin)
Barnet Katz*
Frank Kozeliski*
Irving Leonard Podolsky (Selma Ryave)

The Temple Beth-El family extends condolences to:

*Rabbi Larry and Rhonda Karol,
on the death of Rabbi Karol's cousin,
Barbara Katz,
on July 31, 2018
in Kansas City, Missouri.*

*Susan Fitzgerald,
on the death of her husband,
Patrick Fitzgerald,
on August 7, 2018
in Las Cruces.*

May their memories be for blessing.

In order to ensure that the name of your loved one will be recited during services, we have instituted the following practices:

- The Hebrew dates for each week's Yahrzeits are listed in each Newsletter.
- Names are read on the Shabbat following the Yahrzeit, or on the day, if it falls on that Shabbat.
- Hebrew vs. conventional (Gregorian) calendar: The temple's tradition is to base the Yahrzeits list on the Hebrew calendar. Those who wish to have a name read on a Friday night close to the conventional (Gregorian) calendar date are asked to please email or call the Temple office a few days prior to the service.



Temple Beth-El has now become part of Amazon Smile, which offers members of Temple Beth-El an opportunity to participate in Smile Amazon and donates 0.05% of all purchases back to the Temple. To date, we have received \$22.54 in donations. The process is very simple – go to www.smile.amazon.com. You will be required to enter the charity you wish to donate to – just type in Temple Beth-El, Las Cruces in the charity box and this will set the Temple as your charity of choice. Then just shop – pretty easy and also, since many people today shop online via Amazon, it becomes a win-win situation for all.



Visit the Temple Beth-El Website
www.tbcl.org
for in-depth information about Temple
and its programming and updates on cur-
rent Temple events

Temple Beth-El is on Facebook!

<http://www.facebook.com/pages/Temple-Beth-El/115816285166004>

(It is open for all to see!)

If you are on Facebook already, find our page, click
“Like” and join us in our Facebook community!



COPIERS, PRINTERS, FAX



PTS Office Systems, Inc.
2840 N. Telshor
Las Cruces, NM 88011
575.524.4384
575.524.9818 FAX
www.ptsofficesystems.com



Kevin Horner
khorner@ptsofficesystems.com

VISITING CONGREGANTS WHO ARE ILL OR HOME-BOUND

At Temple Beth-El, we depend on you, our members, to inform us if you know of someone who needs a visit, especially if they are in a hospital or a rehabilitation or assisted living facility, and also if they are not able to leave their homes due to health-related issues. In order for us to keep our list of who needs a visit current, we ask you to call or email Rabbi Karol (rabbi@tbcl.org) with the names of congregants who you know would like to be visited. We appreciate your cooperation in this area, so that we can be, as much as possible, a truly caring community.

Adelante Deadline

The deadline for turning in articles, items and photos for the October, 2018 Adelante is September 20. Please do your best to keep to that schedule to facilitate a timely completion of the Adelante!

Office Hours

On weekdays, Rabbi Karol is in the office every day except for Thursday. Times vary, but you can mostly count on finding Rabbi Karol in the office on Mondays and Tuesdays at 10:00-11:30 am (and Fridays while he is preparing for Shabbat worship) and on Wednesdays at 11:30am-12:30 pm. Ruth Rubin is volunteering in the office on Wednesdays at 10:00-10:30 am. Please call before you come (575-524-3380), or email Rabbi Karol at rabbi@tbcl.org or rablpkarol@gmail.com. You can also contact Rabbi Karol to make an appointment. Thank you!



Tanah Hemingway

(575) 524-4329

most nights

P.O Box 16318

Las Cruces

NM 88004

Editing:

Books, scientific papers, theses, dissertations

Technical documents of all sorts.

(for accuracy, continuity, organization, style
grammar, readability, supportability, etc.)

Tzedakah Opportunities at TBE

Giving to Casa de Peregrinos & El Caldito

Here are longer lists for items needed!

For Casa de Peregrinos: Peanut Butter and the following

Canned foods: Corn, Green Beans, Mixed Vegetables,
Fruits, Tomatoes, Pasta Sauce, Tuna, Beans, and Meats

For El Caldito: Spices, Regular Mayonnaise, Beans, Beef
and Chicken Soup Stock

Casa de Peregrinos provides staple foods to the needy, and El Caldito provides a hot meal 365 days a year to the hungry in our community. Both organizations are part of the Community of Hope located on the same campus at 999 W. Amador. There are common interests and goals and the food received is often shared between the two organizations in order to best utilize both perishable and non-perishable foods. Please bring something for one or both of these organizations and put your donation in the marked containers in the hallway opposite the Library. For more information or questions, contact the Temple office.

SEPTEMBER 2018

Sun	Mon	Tue	Wed	Thu	Fri	Sat
<div> <p><i>May you be inscribed for a good year!</i> <i>L'shanah Tovah Tikateivu!</i></p> </div>						Elul 21 ¹ Talmud Study 9am Shabbat Morning Service 10:15 am Selichot Dessert, Study, Worship 7:30 pm
Elul 22 ² No Religious School	Elul 23 ³ LABOR DAY	Elul 24 ⁴	Elul 25 ⁵ Wednesday Breakfast 8:45 am	Elul 26 ⁶	Elul 27 ⁷ SHABBAT FAMILY SERVICE AT SAGECREST PARK 6:00 pm Potluck dinner following (hot dogs provided) - please bring chairs!	Elul 28 ⁸ Talmud Study 9:00 am Shabbat Morning Service 10:15 am
Elul 29 ⁹ No Religious School ROSH HASHANAH Evening Service 8:00 pm Oneg Following	Tishrei 1 ¹⁰ ROSH HASHANAH 1ST DAY 9:00am Family Service 10:00 am Morning Service—Tashlich at Young Park one hour after morning service ends	Tishrei 2 ¹¹ ROSH HASHANAH 2ND DAY—10:00 am Rosh Hashanah Morning Service followed by Bagel Brunch	Tishrei 3 ¹² Wednesday Breakfast 8:45 am	Tishrei 4 ¹³	Tishrei 5 ¹⁴ Shabbat Shuvah Service 7:00 pm	Tishrei 6 ¹⁵ Talmud Study 9:00 am Shabbat Shuvah Morning Service 10:15 am
Tishrei 7 ¹⁶ Hebrew/Machon 9:00-10:00 am Religious School 10:00 am-12:30 pm Cemetery Service 1:00 pm	Tishrei 8 ¹⁷	Tishrei 9 ¹⁸ Kol Nidre Erev Yom Kippur Service 8:00 pm	Tishrei 10 ¹⁹ YOM KIPPUR 9am Family service 10am Morning Service 1:15 pm Sharing 2:45 pm Yizkor reflections 4:30 pm Afternoon; 5:45 pm Yizkor Neilah 7:20 Break-the-fast	Tishrei 11 ²⁰ Board Meeting 7:00 pm	Tishrei 12 ²¹ Shabbat Service for Renewal of Spirit 7:00 pm	Tishrei 13 ²² Talmud Study 9:00 am Shabbat Morning Service 10:15 am
Tishrei 14 ²³ No AM Religious School Sukkah Building-11am Religious School Sukkah Decorating—4:00 pm Sukkot Evening Service—5:45 pm Pizza dinner following	Tishrei 15 ²⁴ First Day of Sukkot Morning Service 10:00 am	Tishrei 16 ²⁵	Tishrei 17 ²⁶ Wednesday Breakfast 8:45 am Tanakh Study 10:15 am	Tishrei 18 ²⁷	Tishrei 19 ²⁸ Shabbat Sukkot Service 7:00 pm	Tishrei 20 ²⁹ Talmud Study 9:00 am Shabbat Morning Service 10:15 am
Tishrei 21 ³⁰ Hebrew/Machon 9:00-10:00 am Religious School 10:00 am-12:30 pm SIMCHAT TORAH Dinner at 5:30 pm Service at 6:30 pm	Tishrei 22 ^{Oct 1} Simchat Torah and Yizkor Service 10:00 am	Tishrei 23 ²	Tishrei 24 ³ Wednesday Breakfast 8:45 am Tanakh Study 10:15 am	Tishrei 25 ⁴	Tishrei 26 ⁵ Shabbat Service 6pm Singer Chava Mirel will join us!!! Dairy/vegetarian potluck dinner following	Tishrei 27 ⁶ Talmud Study 9:00 am Shabbat Morning Service 10:15 am

3980 Sonoma Springs Avenue
Las Cruces, NM 88011
Office Hours:
Monday-Friday, 9:30am--1:30pm
and by appointment

Phone: 575.524.3380
Fax: 575.521.8111

President: Ellen Torres

Rabbi Lawrence P. Karol
rabbi@tbelc.org

The Temple Beth-El Newsletter is produced regularly at Las Cruces, New Mexico. Editor: Rabbi Lawrence P. Karol . Copy Editors: James Rosenthal, Tanah Hemingway. Circulation: Administration Office. We welcome Adelante sponsorships by or for Temple members and non-members. Sponsorships can be mailed to the Temple; receipts are provided upon request. We reserve the right to edit all sponsorships. Non-member sponsorships (with no ad) are \$25/year. Annual sponsorship rates are as follows: 2x3 business card \$150; Quarter page \$300; Half page \$600. For information about sponsorships, please contact the Temple Office.

**Temple Beth-El and "Adelante" are on the web at
www.tbelc.org**

September, 2018



**Temple Beth-El
3980 Sonoma Springs Avenue
Las Cruces, NM 88011**