



A Monthly Publication for Temple Beth-El,
Las Cruces, New Mexico

FEBRUARY 2014 (ADAR I 5774)



Shabbat Services in February
Friday, February 7
NEW FAMILY SHABBAT
SCHEDULE!

Tot Shabbat for Young Children and their families at 6:00 pm;
Dairy/vegetarian potluck dinner at 6:30 pm;
Shabbat Family Service at 7:30 pm

Friday, February 14

Shabbat Service at 7:30 pm

Friday, February 21

Meditation in the Sanctuary at 7:15 pm
(see below)

Shabbat Service for Renewal of Spirit
at 7:30 pm

Friday, February 28

Shabbat Service at 7:30 pm

Saturdays

Talmud Study at 9:00 am;
Shabbat Service at 10:15 am,
followed by a potluck Kiddush

Dona Ana Lyric Opera &
NMSU Voice Students
Return to Temple Beth-El
on February 9 at 2:00 pm



On Sunday, February 9, 2014 at 2:00 pm, join Doña Ana Lyric Opera director, John Carlo Pierce, and four of his students from the NMSU voice program for an afternoon of arias, songs, and ensembles from some of your favorite operas and musicals. The program represents a musical journey around the world with stops in Paris, Seville, the Black Forest, and Broadway, USA. Dr. Pierce is a lyric tenor with an international reputation; the student singers, all undergraduates, are recipients of the 2013-2014 Bel Canto Scholarship. Flor de la Garza, Master of Piano Performance student, will accompany the program. Free admission. Student scholarship donations are gratefully accepted.

Meditation at 7:15 pm before
our February 21 service in the Sanctuary,
led by David Fishman

In order to enhance the Shabbat Service, we will begin with a short Hebrew Meditation, in the Sanctuary, on February 21st from 7:15 -7:30 pm. Those who do not wish to participate may attend the regular service beginning at 7:30 pm.

Please try to enter the Synagogue as quietly as possible so that the peaceful atmosphere we are trying to create is not disturbed.

The purpose of the Meditation is to prepare us for Shabbat worship by quieting ourselves from our ordinary, tumultuous lives.

For our full worship schedule, see page 2!

For Adult Education, see page 5, including
Psalms study group, Tanakh Study, Talmud
Study, Judaism: Roots and Rituals, Jewish
Women's Spirituality Group, and
Jim Rosenthal's Short-Story
Discussion Group.

For the Mensch Club Film, "Fateless," on
February 23 at 2:00 pm, and
for ongoing activities, see page 10!

For Tzedakah and Tikun Olam
opportunities, see page 11!

Worship Schedule



Friday, January 31

7:30 Shabbat Service, including welcoming New Members.
Rabbi Karol will speak on "Who We are, What We Can Give, Who We Can Be"

Oneg Shabbat sponsored by the Board of Trustees.

Saturday, February 1—ROSH CHODESH

9:00 am Talmud Study
10:15 am Service and Potluck Kiddush
Parashat Terumah Exodus 25:1-27:19
Haftarah Rosh Chodesh Isaiah 66:1-24

Friday, February 7

NEW FAMILY SHABBAT SCHEDULE!

6:00 pm Tot Shabbat Service for young children and their families

6:30 pm Dairy/Vegetarian Potluck Shabbat Dinner

7:30 pm Shabbat Family Service FOR ALL AGES

Saturday, February 8

9:00 am Talmud Study
10:15 am Service and Potluck Kiddush
Parashat Tetzaveh Exodus 27:20-30:10
Haftarah Ezekiel 43:10-27

Friday, February 14

7:30 pm Shabbat Evening Service—Rabbi Karol will speak on "Second Chances." *Oneg Shabbat sponsored by Sue Brown, Marieka Brown, Jeanne Abkes and Julie Seton.*

Saturday, February 15

9:00 am Talmud Study
10:15 am Service led by Leora Zeitlin and Stuart Kelter
Followed by Potluck Kiddush
Parashat Ki Tissa Exodus 30:11-34:35
Haftarah I Kings 18:1-39

Friday, February 21

7:15 pm Meditation led by David Fishman (see page 1)

7:30 pm Shabbat Service for Renewal of Spirit led by Rabbi Karol, featuring special music and prayers for healing along with our Shabbat liturgy. *Oneg Shabbat sponsored by Louise Baskey, Susan Michelson and Barbara Michelson.*

Saturday, February 22

9:00 am Talmud Study
10:15 am Service and Potluck Kiddush
Parashat Vayakheil Exodus 35:1-38:20
Haftarah I Kings 7:40-50

Friday, February 28

7:30 pm Shabbat Evening Service: Rabbi Karol will speak on "Shaping Community in Time, Space and Soul." *Oneg Shabbat sponsored by the Lapid family, Betty Rosse and Shirley Ipsen.*

Saturday, March 1

9:00 am Talmud Study
10:15 am Service and Potluck Kiddush
Parashat Pekuday Exodus 38:21-40:30
Haftarah for Shabbat Shekalim II Kings 11:17-12:17

Friday, March 7

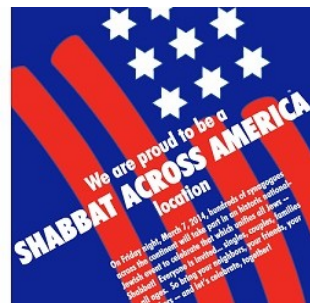
6:00 pm Tot Shabbat Service

6:30 pm Dairy/Vegetarian Potluck Dinner

7:30 pm SHABBAT
ACROSS AMERICA-

We will join with congregations around the country in hosting members of the greater Jewish community and congregants in celebrating Shabbat. This Learn-

ers' Service for all ages will take us through the Shabbat evening prayers with added insights and inspiration.



BOARD OF TRUSTEES 2013-2014

President	Dee Cook
Vice President	Arthur Berkson
Treasurer	Bill Stein
Secretary	Susan Fitzgerald
Trustee	David Fishman
Trustee	Nancy Rosen
Trustee	Susi Kolikant
Trustee	Jason Rosenberg
Trustee	Patrick Quinn
Trustee	Monika Kimball
Trustee	Bryan McCuller
Mensch Club Rep.	David Zeemont
Sisterhood Rep.	Michele Blum

RABBIS

Rabbi Lawrence P. Karol
Rabbi Gerald M. Kane, Rabbi Emeritus

TEMPLE BOARD MEETING

The next meeting of the Temple Board will be held on February 27 at 7:00 pm.



Message from Rabbi Karol

On January 12, our Religious School community planted a new tree just outside the playground. As I looked at these trees of different sizes—small and new, to “medium” to “taller” — I thought about how they represented life, growth and continuity.

They are all at different points in their life cycle. The new tree is like a child who is beginning to write his or her own “book of life” with deeds and experiences, accumulating what will be a wealth of memories, represented by the two trees flanking it.

The newest tree has a wooden stake beside it to provide stability, which is necessary for the winds that blow strongly in Las Cruces. The taller trees have a stronger foundation and are more rigid, but they can endure the wind because they are also flexible. We have that possibility in our lives as well. Over the years, we establish our personalities and our values, our perspectives and our interests. We might think that we necessarily become set in our ways, but that may not be the case. Even the tallest tree in the photo can bend. It still grows and can change its shape. We can emulate that possibility for growth as we move forward in our lives, one year to another, and one decade to another.

These trees can also represent our relationships. The smallest tree signifies the beginning of a friendship, community connection or a family bond. The neighboring trees demonstrate how relationships can deepen as we engage in interactions that nurture the many aspects of fellowship and partnership that can hold us together.



Dee Cook mentioned in her article that I will be continuing as rabbi of Temple Beth-El for another three years. As I look at those trees outside the playground, I think about how they represent the ties that Rhonda and I have developed with many of you and will continue to sustain along with you. I think about how we have, in many ways, grown together through sharing celebrations and challenges, study and worship, beginnings and endings, achievements and new opportunities. That is the essence of community. We look forward to continuing to grow together with you, as those trees will grow, in the coming years.

L'shalom,

Rabbi Larry K.

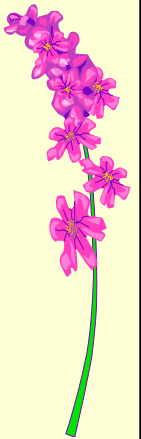
See rabbilarrykarol.blogspot.com—Rabbi Karol's blog featuring Divrei Torah from recent Friday night services.

Dear Temple Beth-El family,

Thank you for your many thoughtful words and deeds at the time of our mother's/grandmother's death. Personal expressions of gratitude to each of you are forthcoming. Your kindness continues to give us comfort and support.

L'shalom,

*Rabbi Larry, Rhonda and Adam Karol
Alan and Cathie Marks*



Rabbi Karol participated in the Dona Ana NAACP march on Sunday, January 19, to honor the legacy of Dr. Martin Luther King, Jr. Rabbi Karol offered brief remarks and a closing prayer at the event. [Photo from the January 24 Las Cruces Bulletin]





President's Message

This last weekend, I had the privilege of presenting the temple board gift to Ezekiel Swartz in honor of his Bar Mitzvah. He did a wonderful job. The Rabbi read a personal letter to Ezekiel which made the occasion even more meaningful and a keepsake for sure.

Even though you receive the Adelante in February, the articles are written in the previous month. So, the Congregational dinner has not yet occurred. We are in the logistics and cooking phase and hope that the 88 people who will be attending will enjoy the evening.

Our leaf project was very successful and brought in just under \$1800 for us. Bob Kimball has placed the leaves on the tree and it doesn't look quite so bare any more. Thank you to all who purchased leaves and thank you to Elissa Poel for the idea. Speaking of Elissa, she has had to step down as chair of the Ways and Means Committee and we will miss her and her great ideas.

As you know, at the last Congregational meeting, the temple members voted to have us negotiate a contract with the Rabbi. Bill Stein, Patrick Quinn and I met with the Rabbi on several occasions to discuss the contract and we finalized the process in an amicable manner. Following the Guidelines for Rabbinical-Congregational Relations established by the Central Conference of American Rabbis, the Rabbi and the congregation have a three-year contract.

Rebecca Berkson is establishing a site for the Jewish Food and Folk Festival for people to

sign up for various activities. She will give us the details. We are going to need everyone to participate to make this event a success.

If you plan to make a brick commitment and have not yet done so, we would appreciate your commitment as soon as possible.

Marieka Brown, Jeanne Abkes and children Kaila and Liana led the family service in January and it was enjoyed by young and old alike. Thank you for the work you did in preparing.

Another committee chair who has given much of herself has had to resign due to family illness. Thank you, Alison Mann, for all you have done to welcome new families to the temple family.

Our thoughts and prayers are with so many of you who are going through challenges either personally or with family members. Please let us know if we can be of any help.

Thank you,
Dee Cook



Bob Kimball added the first set of new leaves to the Tree of Life on Tuesday, January 21. More leaves will be added in the coming days. There will be a dedication soon of these gifts to Temple Beth-El.

ADULT EDUCATION

Culture תורה Holidays עברית Customs



TANAKH STUDY

Led by Rabbi Larry Karol
on Wednesdays at 10:15-11:30 am
(No sessions on February 19 or 26)

TALMUD STUDY

Talmud study meets every Saturday in the Social Hall at 9:00 am before the Saturday morning service. Prospective students are welcome. Contact Erich Zameret or Tanah Hemingway for more information.



Sweet Songs: A Journey into the Book of Psalms

Meeting on Monday nights
February 3 and 10 at 7:00 pm
and continuing on selected Mondays
throughout the coming months.

Please let Rabbi Karol know if you plan to attend
by email (rabbi@tbelc.org) or by calling Temple.

Judaism: Roots and Rituals An Introduction to Judaism

presented by Rabbi Larry Karol

Meeting at 7:00-8:30 pm on

February 4 and 11 (Tuesdays);

February 20 (Thursday)

and March 4 and 11 (Tuesdays)



Text: *Essential Judaism*, by George Robinson

The course has already begun. If you want to enter "midstream," please contact Rabbi Karol (575-524-3380 or rabbi@tbelc.org).

Temple Beth-El Sisterhood's Jewish Women's Spirituality group, led by Susan Lapid,

is still meeting periodically,

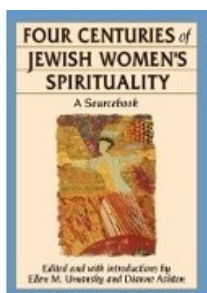
For more information,

contact Susan Lapid 496-5758,

sblapid@gmail.com or

Leora Zeitlin 639-4475,

lzeitlin@cs.nmsu.edu.



On Sunday, March 2, at 2:00 PM, Temple Beth El presents a talk by Ilana Lapid,

"Through the Lens of Cinema: Borderlands as Testing Grounds"

In this presentation/discussion, Ilana provides answers to the following questions: What is the relationship between borders, identities, and vulnerability, and how has this relationship been explored in cinema? How are borderlands also testing grounds - the sites of serious ethical dilemmas? By examining powerful selections from the work of Israeli filmmakers, ways will be explored in which identities are defined and redefined (at the personal and communal level) through the complex process of bordering. Discussion will follow on ways in which bordering shapes our own lives.



The event is free, but donations to host future activities are appreciated.

Attention Temple Beth-El fiction lovers:

Jim Rosenthal's weekly short-story discussion group on *Lost Tribe: Jewish Fiction from the Edge*, edited by Paul Zakrzewski, will continue in February. Please email Jim at jar529@gmail.com or call him at 522-6478 to join the group. This discussion group is sponsored by the temple's Adult Education



Committee and participants are asked to make an \$18 contribution to the temple to help support future programs.



Jim Rosenthal's Short Story Discussion group gathered on January 27 for the first session of this new series.



Beth-El Temple Youth (BETY) joined other volunteers to serve at the El Caldito Soup Kitchen on Martin Luther King, Jr. Day on January 20. In the photo above are Olivia and Lisa Weinbaum, and regular Temple volunteer Corry McKissack. Jamie Bronstein, Evan Zigmond, Leora Zeitlin, Rabbi Karol, Julie Seton and Katie Ham also participated. Given the work of Dr. Martin Luther King, Jr. to combat poverty, this was an appropriate day to perform this mitzvah. Thank you!

*Thank you to our Oneg Shabbat sponsors
in January:*

January 10: Dan Tapper and Judy Long

January 17: Dee Cook and Ann Berkson

January 24: Ari and Carrie Swartz

January 31: The Temple Beth-El Board of Trustees

VISITING CONGREGANTS WHO ARE ILL OR HOME-BOUND

At Temple Beth-El, we depend on you, our members, to inform us if you know of someone who needs a visit, especially if they are in a hospital or a rehabilitation or assisted living facility, and also if they are not able to leave their homes due to health-related issues. In order for us to keep our list of who needs a visit current, we ask you to call or email Rabbi Karol (rabbi@tbelc.org) with the names of congregants who you know would like to be visited. We appreciate your cooperation in this area, so that we can be, as much as possible, a truly caring community.

Wanted!
**Sponsors for the Jewish
Food & Folk Festival
who fit this description:**
King Kosher (\$500)
Matzah Mensche (\$250)
Challah Helper (\$150)
Bagel Buddy (\$75)



Our Jewish Food & Folk Festival is fast approaching – April 6, 2014!

Do you know any of these individuals/businesses? We will pay a reward of plentiful recognition and food tickets to capture them! Sponsors can get (depending on level): food tickets, recognition in posters, ad in the program book, eblast, event website, Temple Facebook page, Adelante, badge, signage and announcement at event.

We also are seeking:

- **Ad purchasers (\$35-\$120)**
- **Silent auction items – gift certificates, items for baskets, jewelry, artwork, pottery, glassware, etc.**

The best way to find them is to ask yourself: Can I donate something? Do I know anyone who owns a business? Do I frequent businesses regularly and would they like some advertising in exchange for serving a good cause? Keep a packet in your glove compartment for those chance meetings or for when you go to that hair/nail/dog grooming appointment.

If you suspect you know one of these prospective sponsors or you want to turn yourself in:

- Pick up a sponsor/ad/auction item packet at the Temple Beth El office
- For sponsorship information, email or call Rebecca Berkson for at Becca.berkson@gmail.com; 708-655-8448
- For advertising in the program, email Christi Rubin at christirubin@gmail.com
- If you have silent auction items, email Sue Mazer at smazer2@q.com

Please act soon – only two months remain! If we don't secure these individuals/businesses our Jewish Food & Folk Festival will not be a success. We need your help to make it happen!

Tu Bish'vat Learning Day and Tree Planting on January 12, 2014



Tu Bish'vat Seder on January 15, 2014



*The Yiddish Mark Twain:
The World of Sholom Aleichem—January 12, 2014*



ISRAEL UPDATE CURRENT EVENTS ROUNDUP

by Phil Alkon

Peace Process Continues

- U.S. Secretary of State John Kerry is relentlessly pursuing his efforts to achieve at least an agreement on principles for an Israeli –Palestinian peace treaty by April – the original 9 month deadline for achieving a breakthrough. He's made more than 10 trips to Israel and West Bank, and side trips to neighboring Arab states, in this quest. The positive news is that the parties continue to negotiate. The fact that talking heads universally predict failure only appears to urge Kerry on.

- One public naysayer was Israel's Defense Minister Moshe Ya'alon (right-wing Likud party) who opined that Kerry was possessed by a Messiah complex in his head-long pursuit of peace, implying he needed close watching, if not corrective therapy. In the end, it was Ya'alon who recanted and asked for forgiveness. One perhaps surprising Kerry supporter is newly reinstalled Foreign Minister Avigdor Lieberman (nationalist Yisrael Beiteinu Party), who warmly endorsed the peace process, provided it encompassed the trade of Israel territory having high Arab populations to the Palestinians for West bank areas with large Jewish enclaves. Israeli Arab leaders, among others, promptly rejected that idea themselves.

- Meanwhile, public messages from the Palestinian leadership remained as contradictory and obtuse as ever. Following earlier assurances by top Palestinian negotiator Saeb Erekat that the negotiations might likely be extended beyond nine months if necessary, PA President Abbas recently told a visiting European President that the talks would not be extended for even a single day. As they say of the Arab Middle East, pay attention to whom people are talking to, rather than what they say. Abbas' continued glorification of Palestinian prisoners, convicted of terrorist atrocities against Jewish civilians and released by Israel as an inducement for the PA to negotiate, hardly strikes all as a genuine commitment to peaceful coexistence. According to a senior PA official, Kerry also threatened the Palestinians with a cut-off of U.S. aid and unfettered expansion of West Bank settlements if they did not reach a framework agreement with Israel.

Visitors From Abroad

- French President Francois Hollande visited Israel for the first time, and reassured Prime Minister Netanyahu and the Knesset that his country remains strongly committed to ending Iran's nuclear weapon ambitions and to fighting growing anti-Semitism in France. He also welcomed a two-state resolution to the Israel-Palestinian conflict. A less reassuring note to some, however, was his support for a re-divided Jerusalem serving as the recognized capital of both Israel and a Palestinian state.

- A more openly enthusiastic supporter of Israel and all its policies was Canada's Prime Minister Stephen Harper, who also addressed the Knesset. He waxed eloquently on the shared values of the two countries, on the right of Israel to exist as a Jewish state, on the benefits of peace with Israel to the Palestinians, and on the dangers of growing world anti-Semitism, often shrouded by efforts to delegitimize Israel's very existence. He specifically included a ubiquitous BDS (Boycott, Divestment, Sanctions) movement that seeks to punish Israel for its horrific "crimes" against occupied Palestinians. Isn't it an amazing coincidence that the only country subject to such special treatment is the only Jewish homeland on Earth?

Boycotting Israel – a Surprise

Recent BDS gains in some academic circles have resulted in significant backlash among U.S. and Canadian universities and academic organizations. Given that criticizing Israel is a proven route to political correctness, BDSers were a bit shocked. Their dismay was further deepened when President Abbas himself openly declared his opposition to blanket boycotts of Israeli products. Even worse, some Palestinian scientists and scholars announced that they had no intention of ending their professional ties with Israeli colleagues and institutions. Prominent among them was Sari Nusseibeh, president of Al-Quds University in East Jerusalem. What are anti-Israel activists supposed to think now?

Is the Arab World Reaching Out?

- Saudi Arabia and Israel are "secretly" cooperating in strategic planning on key Middle East issues. The leading Sunni nation's diminishing faith in American resolve regarding Iran's nuclear ambitions, and the growing dangers of radical Islamists to its own regime, overlaps with significant Israeli security concerns.

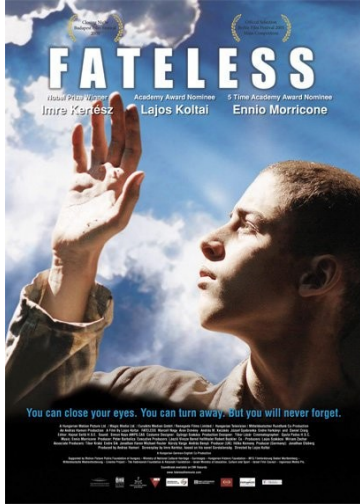
- An Israeli delegation led by Energy Minister Silvan Shalom attended a major meeting of the International Renewable Energy Agency held at its Abu Dhabi headquarters in the United Arab Emirates.

- Israel, Jordan and the Palestinian Authority have agreed to jointly construct a Red Sea-Dead Sea water pipe line that will significantly enhance regional water supplies and will help restore the severely reduced capacity of the Dead Sea.

In expanded support of Egypt's campaign against Islamist terrorism and other lawlessness in the Sinai Peninsula, Israel has granted the Egyptian military additional operational freedom in northern Sinai. They can now overfly Gaza with Apache helicopters in pursuing Hamas-linked terrorists.

Israel Roundtable
Sunday, March 9, 2014—2:00 pm
Be watching for more details

**The Temple Beth-El Mensch Club
will present the film "Fateless"
on Sunday, February 23 at 2:00 pm
in the Temple Sanctuary**



Set in 1944, as Hitler's Final Solution becomes policy throughout Europe, Fateless is the semi-autobiographical tale of a 14-year old Jewish boy from Budapest, who finds himself swept up by cataclysmic events beyond his comprehension. A perfectly normal metropolitan teen who has never felt

particularly connected to his religion, he is suddenly separated from his family as part of the rushed and random deportation of his city's large Jewish population. Brought to Auschwitz and then Buchenwald, his existence becomes a surreal adventure in adversity and adaptation, and he is never quite sure if he is the victim of his captors, or of an absurd destiny that metes out salvation and suffering arbitrarily. When he returns home after the liberation, he misses the sense of community he experienced in the camps, feeling alienated from both his Christian neighbors who turned a blind eye to his fate, and the Jewish family friends who avoided deportation and who now want to put the war behind them. The Hungarian author, Imre Kertész, is a recipient of the 2002 Nobel Prize in Literature "for writing that upholds the fragile experience of the individual against the barbaric arbitrariness of history." The 2005 Hungarian film for which Kertész wrote the script made absolutely no impression in antisemitic Hungary. Thus Kertész and his wife moved to Berlin. The *New Yorker* terms the film "stirringly beautiful...loaded with symbolism and sentiment"; the *New York Post*, "profound and majestic"; and the *Village Voice*, "...Mystically translucent."

Ongoing Events at TBE

WEEKLY TEMPLE BREAKFAST

Weekly breakfasts and discussions of Jewish and general interest topics are held at the Temple every Wednesday morning. Breakfast begins at 8:45am, speaker presentations begin at 9:00am. The cost is \$2.00 weekly or \$6.00 monthly. Please contact Phil Alkon (philipalkon@gmail.com or 575-524-6945) for further information.



MENSCH CLUB

For more information about meetings and events,, contact Dave Zeemont at 523-0913 or email at mud-job@earthlink.net

KNITTING GROUP—A knitting group meets at TBE on Tuesday mornings at 10:15 am. For more information, please contact Deana Kessin at 521-4077 or Kessin@comcast.net



**Tanah
Hemingway**

(575) 524-4329
most nights
P.O Box 16318
Las Cruces
NM 88004

Editing:

Books, scientific papers, theses, dissertations

Technical documents of all sorts.

(for accuracy, continuity, organization, style
grammar, readability, supportability, etc.)



Dr. Paul Feil, M.D., ABSM
Pulmonary Medicine
Sleep Disorders

2437 S. Telshor Boulevard
Las Cruces, N.M. 88011
sleepc.com

(575) 522-2777
Fax: (575) 522-4532

THE CHESED GROUP

Is here for members in need of assistance due to health issues. Please CALL well in advance:

- David Zeemont at 523-0913 if you need transportation to a medical appointment
- Sally Alkon at 524-6945 if you need transportation or someone to shop for food
- TBE office at 524-3380 if you would like a hospital visit from Rabbi Karol
- TBE office at 524-3380 if you do not drive and need a ride to Temple services.

If you are interested in being a coordinator/helper/driver for services or temple events, please call Dave Zeemont at 523-0913

***Ladies Clothing Contributions
for La Tienda de Jardin***

La Tienda de Jardin, located at 335 La Colonia Ave (at the southwest corner of Alameda and Main St), would greatly appreciate contributions of ladies clothing, jewelry, shoes, handbags and household items. La Tienda does the following very well:

- It supports Jardin de Los Ninos, a local charity that takes care of homeless and near homeless children and families.
- Purchases help mostly working women dress appropriately at a fair price.
- The donations help those who donate keep their closets tidy while doing a good deed.
- Items not sold are given to other charities and nothing goes to a landfill.

If you have not visited us, please do. We are open Monday-Friday, 10am to 5pm and Saturday at 10am to 2pm. If a pick-up would help you make your donation or you need more information, please call Joan Silar at 521-1925 or Bea Klein at 526-2684.

Rabbi Karol will be attending Songleader Boot Camp in St. Louis, Missouri on February 15-19 and the national convocation of the PICO Network (People Improving Communities Through Organizing) in Atlanta on February 24-26. In case of any urgent concerns, contact Dee Cook.

Congratulations!

- Lyla Margaret Ham was born on 2 January to Roy and Emily Ham. She is the first grandchild for Julie Seton and Bob Sanderson, as well as Katie Ham's first niece.
- Remy Monroe Gavzy, daughter of Nate and Katie Gavzy, was born on December 29, 2013 in Auburn, California. Dave and Lynn Zeemont are the proud grandparents.

Tzedakah Opportunities at TBE***Giving to Casa de Peregrinos & El Caldito***

The food for February

for Casa de Peregrinos is

Single service fruits and fruit juices

Foods for February for El Caldito are

Tuna fish, rice, pasta and peas. El Caldito also needs jars with lids and plastic bags.

Casa de Peregrinos provides staple foods to the needy, and El Caldito provides a hot meal 365 days a year to the hungry in our community. Both organizations are part of the Community of Hope located on the same campus at 999 W. Amador. There are common interests and goals and the food received is often shared between the two organizations in order to best utilize both perishable and non-perishable foods. Please bring something for one or both of these organizations. For more information or questions, contact

- Liz Lewis-Olson, Casa de Peregrinos (elewis4@comcast.net)
- Eve Palanker, El Caldito (palanker1@msn.com)

TEMPLE FUNDS—From the Treasurer

Donations are gratefully accepted for the following:

Torah Endowment Project—For the purchase of a new Torah. Donations above the cost of the Torah are used to secure the financial future of the Temple.

General Operating Fund—For the day-to-day operation of TBE.

Fund 2004—For upkeep on our new building.

Community Service Fund—For projects that benefit our community and Las Cruces and Southern New Mexico.

Send a Kid to Israel Program (S.K.I.P. Fund)—To send Temple youth to Israel.

Irving Batkin Memorial Scholarship Fund—To provide a Jewish education for our children. Earnings from this fund are used mainly to offset the cost of operating our Religious School.

Frances Williams Library Fund—To provide books and infrastructure for the TBE library.

Rabbi's Discretionary Fund—Rabbi Karol uses the Discretionary Fund to meet a variety of philanthropic requests as well as to supplement TBE programs.

Rabbi Gerald M. Kane Adult Education Fund—Provides funds to help further adult education and cultural programming at TBE.

Beth El Temple Youth Fund—Provides support for Youth activities at TBE.

Periodically the temple may list short-term projects or needs. Contributions that do not specify a project or fund will be added to the General Operating Fund. If you have a question or wish to contribute to a project not listed here, please contact our Temple Beth-El Treasurer, Bill Stein.

Donations through January 27, 2014

Rabbi's Discretionary Fund:

- Harry & Diane Bass, in memory of Jeanette Marks
- Bernice Langner, in memory of Hesh Langner
- Ruth Rubin, in memory of Zeena Geller
- Jeff and Cherri Hudson-Brown, in memory of Jeanette Marks
- Ezra Neidich, in memory of Irene Neidich
- Allen & Eve Palanker, in memory of Jeanette Marks
- Jane & Russell Greene, in memory of Jeanette Marks
- Michelle Skigen, in memory of Stanley Skigen
- Vera & Burton Schwartz, in memory of Rose Segreto
- Rhoda & Jack Wisman, in memory of Jeanette Marks
- David Zeemont, in memory of Raphael Gordon
- Jeffrey & Avis Lewis, in memory of Rita Herman and Jeanette Marks
- The family of Jerry Deutschman, thank you to Rabbi Karol
- Patti and Steve Rosenberg and Family, in memory of Jeanette Marks

Rabbi Gerald M. Kane Adult Education Fund

- David Zeemont, in memory of Milton Zeemont
- Rabbi Jerry and Cyrille Kane
 - ♦ In honor of the birth of Abigail Liyun Fidler, daughter of Trevor and Judy Fidler, granddaughter of Spencer Fidler and Debbie Rindge
 - ♦ In honor of the birth of Remy Monroe Gavzy, daughter of Nate and Katie Gavzy, granddaughter of Dave and Lynn Zeemont
 - ♦ With love and appreciation to Corry McKissack, a wonderful art teacher and friend
 - ♦ In memory of Jeanette Marks
 - ♦ Mazel Tov to Adam Karol & Juliana Schnur on their engagement
 - ♦ Mazel Tov to Julie Seton and Bob Sanderson on the arrival of Lyla Ham, daughter of Roy & Emily Ham
 - ♦ In memory of Janet Kane, mother of Rabbi Jerry Kane

Library Fund:

- Frances Williams, in memory of Yetta Resnick and Howard Resnick
- Frances Williams, in memory of Jeanette Marks

TBE Religious School:

- Yosef and Susan Lapid, in memory of Ilona & Shmuel Farakas

General Operating Fund:

- Harry & Diane Bass, in memory of Jerry Deutschman; Frima Marquez's brother Alvin Krasner, nephew James Krasner, and sister-in-law Irma Krasner; and Ramon's nephew Pete Mendez and brother Richard Marquez
- Irv & Nina Rothman, in memory of Jeanette Marks
- Selda Steckler, in admiration and appreciation to Monika Kimball and condolences to Rhonda Karol

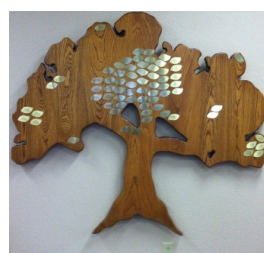
- Norman & Suzanne Mazer, in memory of Jeanette Marks
- Mel & Dia Taylor, in memory of Clifford Evans, Sr. and Jean Taylor
- Robert & Carla Libby, in memory of Harris Libby
- Ann & Burt Berkson, in honor of Bea Klein and Abe Pomerantz & in memory of Jeanette Marks
- Stan Muchnikoff, in honor of Jesse Muchnikoff
- Ann & Burt Berkson, in memory of Arthur Stern
- Marieka Brown & Jeanne Abkes, in memory of George Cohen
- Sue Brown, in memory of George Cohen
- Jeff & Cherri Hudson-Brown, in memory of Elaine Brown
- Grace Hammesfahr, in honor of Nina & Irv Rothman
- Bryan McCuller, in memory of Laura Metzger
- Lila Zeigler, condolences to Rhonda Karol on loss of her mother and in memory of Hesh Langner, Jerry Deutschman, Barbara Siegel, and Jean Brancato
- Shelly & Jerry Silverman, in memory of Jeanette Marks and in honor of Sarah Smalley, mother of Alison Mann, on her 100th birthday
- Daniel & Simy Allen, in memory of Jeanette Marks, Jerry Deutschman, and Frima Marquez's brother Alvin Krasner.
- Susan Michelson & Bill Stein, in memory of William Stein and Jeanette Marks
- David Zeemont
- Jacob & Susanne Kolikant, in memory of Margaret Gantert
- Robert and Monika Kimball, in honor of Sarah Smalley's 100th birthday

BETY Fund:

- Julie Seton, in memory of Dee Seton Barker

Tree of Life Donors (there will be a complete listing of those honored and remembered in a future Adelante)

Joan Glickler



Honor the memory of loved ones with a memorial plaque and mark celebrations and milestones (and also the memory of friends and family) by adding leaves to our Tree of Life.

Yahrzeits-January 31, 2014 through March 1, 2014

Read on Friday, January 31 and Saturday, February 1

Shimson Alkon, Father of Philip Alkon
 Shirley Backman, Mother of Judy Kirschner
 Jeanne Brancato, Partner of Joseph Bell
 Ruth N. Brooks*, Mother of Sharon Dorfman
 Henrietta Bruder*, Cousin of Murray Bruder and Ron Bruder
 (and families)
 George Cohen*, Father of Susan Brown, Grandfather of
 Marieka Brown and Jeanne Abkes
 Louis Druxman*
 Clifford Evans Sr., Grandfather of Dia Taylor
 Margaret Gantert, Grandmother of Susi Kolikant
 Rita Herman, Mother of Avis Herman Lewis
 Bella Krushen*
 Yetta Resnick*, Mother of Frances Williams
 Charlotte Schwartz*
 Sonia Seigel*
 Dee Seton Barber*, Mother of Julie Seton
 Reba Tapper, Mother of Dan Tapper
 Roxy Violin, Uncle of Stefani Singer

Read on Friday, February 7 and Saturday, February 8

Avraham Ben Isaac Ha Cohen, Father of Tanah Hemingway
 Patricia Collier Ehlers, Mother of Lisa McCuller
 Beatrice Gibbs, Sister of Ruth Ann Sugarman
 Ann Marie Hedgecock*, Granddaughter of Ann Hansen
 Carl Isaacson, Father of Louise Feldman-Baskey
 Frances Klein*, Mother of Sonny Klein and Mother-in-law of
 Bea Klein
 Itzhak Kolikant, Father of Jacob Kolikant
 Stephanie S Morgan*, Sister of Peter Siegel
 David Sicherman, Father-in-law of Sally Sicherman
 Ruth Sicherman, Mother-in-law of Sally Sicherman
 Max Steinberg*, Father of Evelyn Bruder
 Storm Sauter Tarvin, Great-granddaughter of
 Tanah Hemingway
 William "Jack" Mayo, Father of Lisa Weinbaum
 Dolly Zabin, Aunt of Jeff Brown
 Frances Zimet, Cousin of Helen Raphael

Read on Friday, February 14 and Saturday, February 15

Louis Bass*, Father of Harry Bass
 Rachel Fox*
 Hortense Heart, Grandmother of Nancy Bergman
 Frank Hiber, Father of Mary Fitzgerald
 Ida Katz*
 Jack Lipschutz*, Brother-in-law of Abe Pomerantz
 Charlotte Ray Mann, Mother of Gary Mann
 Bertram Marks, Father of Rhonda Karol
 Isabelle Sazer, Cousin of Tanah Hemingway
 Mieke Skigen*, Mother of Michelle Skigen
 Joseph Wolfe*, Father of Elissa Poel

Read on Friday, February 21 and Saturday, February 22

Ralph Alkon, Brother of Philip Alkon
 Faye Berkson*, Mother of Burt Berkson
 Betty Brankman, Mother of Sally Alkon
 Mollie Bruder*, Mother of Murray Bruder, Grandmother of
 Ron Bruder
 Samuel Chapman, Father of Diane Fleishman
 Clifford Evans Jr, Father of Dia Taylor
 Lorraine B Fidler*
 Sam Jacobs, Father-in-law of Win Jacobs
 Harry Schechter
 Edith Steinberg, Mother of Evelyn Bruder, Grandmother of
 Ron Bruder
 David Andrew Steinzig*

Read on Friday, February 28 and Saturday, March 1

Estelle Berger, Mother of Barbara Berger
 Lawrence Friedman, Brother of Teddy Weinglass
 Katherine A. Lathrop, Mother of Jane Grider
 Bertha Maness, Great Aunt of Stefani Singer
 Abigail Palanker, Cousin of Allen Palanker
 Richard Palanker, Cousin of Allen Palanker
 Gertrude Silverston*
 Anthony Thelkan*
 Joel Ziegler*, Husband of Lila Ziegler

The Temple Beth-El family extends condolences to:

***Rabbi Larry and Rhonda Karol, on the death of
Rabbi Karol's first cousin, Harry Glazer, in Poto-
mac, Maryland on January 1, 2014.***

***Rabbi Jerry and Cyrille Kane, on the death of
Cyrille's cousin, Coleman Greenberg,
on January 17, 2014.***

May their memories be for blessing.

In order to ensure that the name of your loved one will be recited during services, we have instituted the following practices:

- The Hebrew dates for each week's Yahrzeits are listed in each Newsletter.
- Hebrew vs. conventional calendar: The temple's tradition is to base the Yahrzeits list on the Hebrew calendar. Those who wish to have a name read on a Friday night close to the conventional calendar date are asked to please email or call the administrator a few days prior to the service.

*Asterisks at left indicate that a loved one has been permanently memorialized with a plaque in the Temple sanctuary. If you are interested in acquiring a plaque for your loved one, contact the Temple office.



HAIR DESIGNS
522-3959 (next to the Hilton)

Telshor Tower Plaza, 755 Telshor Blvd., Bldg. C, Ste. 201, Las Cruces, NM



BakeHouse
 We're not interested in making a lot of bread.
 We're interested in making the best bread.

Traditional European Sourdough Breads
Authentic Jewish Bagels and Bialys

575-520-9533 • www.bakehouse.net
 Every Saturday at the Las Cruces Farmer's & Crafter's Market
 In front of White's Music box from 8am to 1pm.

- NO Commercial Yeast • NO added Sugar • NO Fats • NO Dairy • NO Preservative
- Naturally Leavened • Long Fermentation • Produced in Small Batches
- Each Loaf, Bagel and Bialy is Hand Shaped
- Bagels are boiled • Orders accepted
- Baked in our WOOD FIRED OVEN

BakeHouse is a fully insured and NM Board of Health Licensed and approved food processor & caterer



Willman
 CERTIFIED PUBLIC ACCOUNTANT

Lisa J.O. Willman
 (575) 522-3882
 Fax: (575) 522-3889
 Email: willman@zianet.com
 1744 S. Triviz Dr.
 Las Cruces
 New Mexico
 88001



COPIERS, PRINTERS, FAX

PTS
 OFFICE SYSTEMS, INC.
 The Future of Office Technology



PTS Office Systems, Inc.
 2840 N. Telshor
 Las Cruces, NM 88011
 575.524.4384
 575.524.9818 FAX
www.ptsofficesystems.com

Kevin Horner
khorne@ptsofficesystems.com

Dedicated to the American Homeowner
evelyn@homeslascruces.com
 575-650-7224



Evelyn Bruder
 Associate Broker

www.homesforsaleinlascruces.com




SONOMA RANCH

David M. Steinborn
 Construction & Development
 Sonoma Ranch Golf
 Sunset Grill

141 Roadrunner Parkway
Suite 224
Las Cruces, NM 88011

575.521.0770 (office)
575.644.3136 (cell)

david@sonomaranch.com



THE PRONTO PLUMBERS, INC
 P.O. Box 100 Mesilla Park, NM 88007
 575 524-9349



FEBRUARY 2014

Sun	Mon	Tue	Wed	Thu	Fri	Sat
						Adar I 1 1 Talmud Study 9:00 am Shabbat Morning Service 10:15 am ROSH CHODESH
Adar I 2 2 Religious School 9:00 am	Adar I 3 3 Short Story Discussion Group 10:00 am Sweet Songs: A Journey into the Book of Psalms 7:00 pm	Adar I 4 4 Knitting Group 10:15 am Judaism: Roots and Rituals 7:00 pm	Adar I 5 5 Wednesday Breakfast 8:45 am Tanakh Study 10:15 am Hebrew 4:45 pm	Adar I 6 6	Adar I 7 7 FAMILY SHABBAT Tot Shabbat 6pm Potluck Dinner 6:30 pm Family Service 7:30 pm	Adar I 8 8 Talmud Study 9:00 am Shabbat Morning Service 10:15 am
Adar I 9 9 Religious School 9:00 am Adult Ed. 2:00 PM Dona Ana Lyric Opera/NMSU Students	Adar I 10 10 Sweet Songs: A Journey into the Book of Psalms 7:00 pm	Adar I 11 11 Knitting Group 10:15 am Judaism: Roots and Rituals 7:00 pm	Adar I 12 12 Wednesday Breakfast 8:45 am Tanakh Study 10:15 am Hebrew 4:45 pm	Adar I 13 13	Adar I 14 14 Shabbat Service 7:30 pm	Adar I 15 15 Talmud Study 9:00 am Shabbat Morning Service led by Leora Zeitlin and Stuart Kelter 10:15 am
Adar I 16 16 No Religious School	Adar I 17 17 Presidents' Day	Adar I 18 18 Knitting Group 10:15 am	Adar I 19 19 Wednesday Breakfast 8:45 am NO Tanakh Study Hebrew 4:45 pm Sisterhood Council Meeting 6:30 pm	Adar I 20 20 Judaism: Roots and Rituals 7:00 pm	Adar I 21 21 Meditation at 7:15 pm in the Sanctuary Shabbat Service for Renewal of Spirit 7:30 pm	Adar I 22 22 Talmud Study 9:00 am Shabbat Morning Service 10:15 am
Adar I 23 23 Religious School 9:00 am Mensch Club Film "The Fateless" 2:00 pm	Adar I 24 24	Adar I 25 25 Knitting Group 10:15 am	Adar I 26 26 Wednesday Breakfast 8:45 am NO Tanakh Study Hebrew 4:45 pm	Adar I 27 27 Board Meeting 7:00 pm	Adar I 28 28 Shabbat Service 7:30 pm	Adar I 29 Mar. 1 Talmud Study 9:00 am Shabbat Morning Service 10:15 am

3980 Sonoma Springs Avenue
Las Cruces, NM 88011
Office Hours:
Monday-Friday, 9:00am--1:30pm

Phone: 575.524.3380
Fax: 575.521.8111

President: Dee Cook

Rabbi Lawrence P. Karol
rabbi@tbelc.org

The Temple Beth-El Newsletter is produced regularly at Las Cruces, New Mexico. Editor: Rabbi Lawrence P. Karol . Copy Editors: James Rosenthal, Tanah Hemingway, Rabbi Gerald M. Kane. Circulation: Administration Office. We welcome Adelante sponsorships by or for Temple members and non-members. Sponsorships can be mailed to the Temple; receipts are provided upon request. We reserve the right to edit all sponsorships. Nonmember sponsorships \$25/year. One month sponsorship insertions \$108. Annual sponsorship rates as follows: 2x3 business card \$150; Quarter page \$300; Half page \$600. For information about sponsorships or insertions, please contact the Temple Office.

**Temple Beth-El and “Adelante” are on the web at
www.tbelc.org**

OR CURRENT RESIDENT

February, 2014



**Temple Beth-El
3980 Sonoma Springs Avenue
Las Cruces, NM 88011**