



A Monthly Publication for Temple Beth-El,  
Las Cruces, New Mexico

MAY 2014 (IYAR-SIVAN 5774)



### Shabbat Services in May:

(Full Schedule on Page 2)

**Friday, May 2**

**FAMILY SHABBAT AND  
MARKING ISRAEL'S 66 YEARS!**

Tot Shabbat for Young Children and their families at 6:00 pm; Dairy/vegetarian potluck dinner at 6:30 pm; Family Shabbat Service at 7:30 pm

**Friday, May 9-Shabbat Service at 7:30 pm**

**Friday, May 16-Meditation in the Sanctuary at 7:15 pm; Shabbat Service at 7:30 pm**

**Friday, May 23-Shabbat Service at 7:30 pm**

**Friday, May 30-Shabbat Service at 7:30 pm**

led by Rabbi Jerry Kane

\*\*\*\*\*

**Saturdays**

Talmud Study at 9:00 am; Shabbat Service at 10:15 am, followed by a potluck Kiddush



## FORUM

**Sunday, May 18, 2014**

**2:00 – 3:30 pm**

**You are invited to a Forum:**

**Tikkun Olam (Repairing the world):**

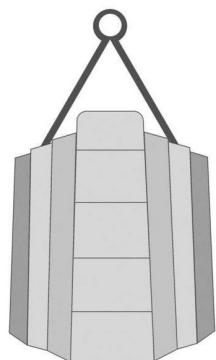
**Interfaith perspectives on work, wage, justice and the economy.**

Rabbi Larry Karol and Bishop Oscar Cantu will open with a presentation on workforce values from a faith perspective.

- The program will include opportunities for small group conversation.
- Refreshments will be served and donations will be gratefully accepted.

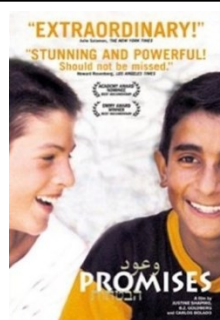
Sponsored by the Social Action and Adult Education Committees.

**Please read  
the special update  
on the  
Brick Walkway and  
Biblical Garden  
on Page 3**



Temple Beth-El

**Save the date!  
Temple Beth-El  
Annual  
Congregational  
Meeting  
Thursday,  
May 22, 2014  
7:00 pm  
More information  
to follow!**



**A Thoughtful Film for  
Israel Independence Day  
Promises (2001)**

**Presented by the Mensch Club  
Sunday, May 4 at 2:00 pm**

Promises presents a powerful portrait of seven Palestinian and Israeli children who live in and around Jerusalem. As filmmaker B.Z. Goldberg, who was raised in Israel, notes, *They live no more than 20 minutes from each other, but they are each growing up in very separate worlds.* If you believe in your heart that, despite every hurdle, peace is possible between the Israelis and Palestinians, this film will fill you with hope and wonder. That's not to say it's rosy - the children depicted in the film often exhibit anger and intolerance, but the mere act of recognition between the children of these two warring groups is enough to inspire faith in their futures. This film is a beautiful document of a precious, brave and tenuous experiment on the part of the filmmakers. May we all have the courage to try to guide the next generation into a more peaceful, more understanding world.

## Worship Schedule



### Friday, May 2—FAMILY SHABBAT

6:00 pm Tot Shabbat Service for young children and their families

6:30 pm Dairy/Vegetarian Potluck Dinner

7:30 pm Family Shabbat Service FOR ALL AGES—  
Religious School students will participate.

***THIS SERVICE WILL INCLUDE SONGS AND  
READINGS FOR ISRAEL INDEPENDENCE DAY.  
Oneg Shabbat sponsored by the Bruder family.***

### Saturday, May 3

9:00 am Talmud

10:15 am Service and Potluck Kiddush

Parashat Emor Leviticus 21:1 - 24:23

Haftarah: Ezekiel 44:15 - 44:31

### Friday, May 9

7:30 pm Shabbat Evening Service – Rabbi Karol will speak on “Proclaiming liberty throughout the Land – The role of faith in preserving freedom (or...how discussing national and local issues is enhanced by the lens of our religious heritage). ***Oneg Shabbat sponsored by Ann Hansen (and others!).***

### Saturday, May 10

9:00 am Talmud

10:15 am Service and Potluck Kiddush

Parashat Behar Leviticus 25:1-26:2

Haftarah Jeremiah 32:6-27

### Friday, May 16

**7:15 pm Meditation led by David Fishman**

**7:30 pm Shabbat Service for Renewal of Spirit** led by Rabbi Karol, featuring special music and prayers for healing along with our Shabbat liturgy. ***Oneg Shabbat sponsored by Marlene Benz and Jamie Bronstein.***

### Saturday, May 17

9:00 am Talmud

10:15 am Service and Potluck Kiddush

Parashat Bechukotai Leviticus 26:3 - 27:34

Haftarah: Jeremiah 16:19 - 17:14

### Friday, May 23

7:30 pm Shabbat Evening Service—Rabbi Karol will speak on “Stand up and be counted.” ***Oneg Shabbat sponsored by Jane Grider and Mickie Weiss.***

### Saturday, May 24

9:00 am Talmud

10:15 am Service and Potluck Kiddush

Parashat Bamidbar Numbers 1:1 - 4:20

Haftarah: Hosea 2:1 - 2:22

### Friday, May 30

7:30 pm Rabbi Jerry Kane will lead this Shabbat Evening Service. He will speak on “To Bless or not to Bless—That is the Question!” ***Oneg Shabbat sponsored by Renee Frank and Andrea Orzoff.***

### Saturday, May 31

9:00 am Talmud

10:15 am Leora Zeitlin and Stuart Kelter will lead the service. A potluck Kiddush will follow.

Parashat Naso Numbers 4:21-7:89

Haftarah: Judges 13:2-25

#### **Meditation at 7:15 pm before our May 16 service in the Sanctuary, led by David Fishman**

In order to enhance the Shabbat Service, we will begin with a short Hebrew Meditation, in the Sanctuary, on May 16th from 7:15 -7:30 pm. Those who do not wish to participate may attend the regular service beginning at 7:30 pm. Please try to enter the Synagogue as quietly as possible so that the peaceful atmosphere we are trying to create is not disturbed.

#### **BOARD OF TRUSTEES 2013-2014**

President	Dee Cook
Vice President	Arthur Berkson
Treasurer	Bill Stein
Secretary	Susan Fitzgerald
Trustee	David Fishman
Trustee	Nancy Rosen
Trustee	Susi Kolikant
Trustee	Jason Rosenberg
Trustee	Patrick Quinn
Trustee	Monika Kimball
Trustee	Bryan McCuller
Mensch Club Rep.	David Zeemont
Sisterhood Rep.	Michele Blum

#### **RABBIS**

Rabbi Lawrence P. Karol

Rabbi Gerald M. Kane, Rabbi Emeritus

\*\*\*\*\*

#### **TEMPLE BOARD MEETING**

The next meeting of the Temple Board will be held after the Annual Meeting on May 22.



### **Message from Rabbi Karol**

On the Shabbat evening before we hosted our first Jewish Food and Folk Festival, I asked congregants gathered for that service to list, from their perspective, aspects of Judaism about which our neighbors should know. Before a day when we shared the sights, tastes and sounds of Judaism with such enthusiasm, I wanted to get a sense of which intangible values are central to our heritage.

This is an impressive list!

- Personal responsibility.
- We are still here!
- Judaism is not just Christianity without Jesus.
- We are not one monolithic block that all think and act alike.
- Torah is the most important thing and everything else is commentary. The values of the Torah are the guideposts of our lives.
- We try to be a moral and ethical people.
- We believe in one God.
- A direct and personal experience and relationship with God is available to all of us regardless of social standing or background.
- With our prayerbook in both Hebrew and English, we reaffirm that Hebrew, the language of our ancestors, has meaning and significance for us.
- Acceptance of other peoples views: we believe that it's everyone's right to believe what they want, and we want that same consideration.
- Working for peace for all peoples and standing up for the oppressed are central to our faith.
- *Tikkun olam*--repairing the world.
- Advocating for justice: *tzedek* and *tzedakah*.
- Shabbat has kept the Jewish people. The values of the Sabbath – rest, consideration, joy and reverence for creation - are central to Judaism.
- *Tikkun midot*--repairing oneself.
- We were once slaves in Egypt, but now we're free.
- It's important to make distinctions between what is proper and not proper, right and wrong, and secular and holy
- Love

The murders at Village Shalom and the Jewish Community Center of Overland Park, Kansas on April 13 put some of these values to the test. A memorial service at the JCC on April 17 brought together a cross-section of the Kansas City interfaith community to offer prayers and words of comfort, reassurance and hope. The fact that none of the victims—Reat Griffin Underwood, William Lewis Corporon, and Terri LaManno—were Jewish demonstrates the reality that we know so well in Las Cruces. No faith community is an island. We all live together. Residents in a

city should seek to strengthen ties with each other across any “definitions” of identity that might have a potential to create division. We sing often the words of Psalm 133:1: “How good and how pleasant it is when people dwell together in unity.” We have the opportunity, every day, to strengthen and deepen that sense of interconnectiveness.

On Sunday, April 20, as we continued our Passover celebration and the Christian world observed Easter, I shared this thought on my Facebook profile: “Redemption...deliverance...freedom. These themes suffuse this day with meaning for many people around the world. May we work together throughout the year with these values as our goal.”

Those principles, along with peace, constitute a thread running through every Shabbat and holiday worship service. And with Israel Independence Day approaching, we continue to look for progress along the path to reconciliation within Israel, between various ideological sub-communities, and between Israel and her neighbors. Our impromptu summary of central Jewish tenets can and should serve as a guide in the relationships we develop and maintain throughout our lives.

*Shalom*, which we usually translate as peace, can also mean “wholeness” or “completeness.” When we say or sing “*Oseh Shalom*,” that prayer reminds us that the tranquility and growth within creation can be ours if we work in harmony with one another. May the teachings of our tradition continue to guide us towards that ultimate destination.

L’shalom,

**Rabbi Larry K.**

See [rabbilarrykarol.blogspot.com](http://rabbilarrykarol.blogspot.com), Rabbi Karol’s blog featuring Divrei Torah from recent Friday night services.

**Rabbi Karol leads a “Seder for Justice and Peace” at St. Andrew’s Episcopal Church on April 17.**



**At left—Rabbis Steve Leon of Congregation B’nai Zion of El Paso, Texas and Rabbi Karol at the Jewish Food and Folk Festival on April 6.**

**At right: NMSU President Garrey Carruthers with Rabbi Karol and Rabbi Kane at the President’s luncheon with the NMSU Interfaith Council on April 25.**





### *President's Message*

We're still riding high from the success of our Jewish Food and Folk Festival. Bill Stein is working on the final figures. He has to wait for all receipts to be received and paid and credit card income to come in for us to get a firm number. All in all, we were very successful

financially and the final results will be reported.

Maybe, just as important from another perspective, is the community involvement. Both within our own temple and the greater Las Cruces, El Paso communities who helped to make our event a success. I'm not sure any of us expected the tremendous amount of people who attended. It was amazing. We received so much positive feedback, it was very gratifying. There are a few improvements needed and we will be working on those for next year.

Again, I thank everyone for their participation, especially chairs Aggie Saltman and Rebecca Berkson.

Another nice community event was our Temple Seder. There was a great turnout and the food was delicious. Thank you to Michele Blum and Lynn Zeemont for coordinating the Seder.

Please read the article on this page about the Brick Garden written by Alison Mann. We've set a timeline for our first order to go in and a date for a groundbreaking ceremony. Also, keep your eye on the thermometer in the temple entry that Bob Kimball created for us to follow the number of bricks that have been purchased. It's very colorful.

Please attend our Congregational Meeting on Thursday, May 22 and support your temple board and candidates for the coming year.

We've had a good year and it will be nice to hear a positive report about the health of our congregation. You will be receiving a letter shortly with the agenda and a list of candidates with a brief statement from each person running for the board.

I would like to thank Bill Stein, Patrick Quinn, Susan Fitzgerald and Nancy Rosen for their years of service as they have decided to retire from the board at this time. Enjoy your free time.

***Thank you,  
Dee Cook***

### **Brick Walk and Biblical Garden**

The caller was in a panic. "Is it too late to donate a brick for the Brick Walkway and Biblical Garden?"



The reply is easy. Everyone can donate a brick for many months to come, because we are hoping to fill the whole walkway and contemplation area and that's going to take many donations of bricks. But we asked everyone to start the process as quickly as possible so that we could reach the goal of the first 100 bricks, which would allow us to lay the walkway foundation, implement the groundbreaking ceremony and have those bricks shipped

without charge to TBE. **So far we have about 63 bricks ...you can help us reach 100 by June 1<sup>st</sup>!**

We have contracted with local landscaper Wasser and Wasser to do the beginning work on the walkway, and that should be completed by May 10<sup>th</sup>. All forms and checks from congregants for the initial order of bricks will need to be in by June 1. On June 15<sup>th</sup>, we will send those orders into the brick company with the expectation that the engraved bricks will be back at the Temple on around July 25<sup>th</sup>. The ground breaking ceremony will follow that.

You might remember from our introduction of the idea that this project will be in four phases: 1) the bricks in the walkway and contemplation area, 2) the Biblical plants, 3) a pergola and benches, and 4) a Holocaust memorial.

In order to complete Phase One, we hope that, as you think about donations to the temple, you will consider an engraved brick celebrating an occasion or memorializing or honoring loved ones. You don't need to be a Temple member to buy a brick...children and friends of members have bought bricks, and others who wished to have a special way to say thank you to friends have chosen to donate a brick.

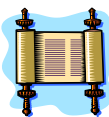
The bricks come in several sizes and prices and forms can be obtained in the Temple office or a member of the committee can mail a form to you. The TBE website will also have the forms. If you look at donations in the top bar of the website, scroll down to bricks, there are links to the form for the size bricks you wish to order. Just print them out, add a check made out to TBE with Bricks in the memo line, and mail or bring it in to the Temple.

And thank you for helping to beautify our Temple, as well as provide a financial foundation for it!

**TBE Brick walkway and Biblical Garden Committee:  
Mike Mandel, Alison Mann, Dee Cook, Bob Kimball,  
Linda Kruger, Frances Williams**

# ADULT EDUCATION

Culture תורה Holidays עברית Customs



**TORAH STUDY (EXODUS):** Led by Rabbi Karol on Wednesdays at 10:15-11:30 am  
**TALMUD STUDY**

Talmud study meets every Saturday in the Social Hall at 9:00 am before the Saturday morning service. Prospective students are welcome. Contact Erich Zameret or Tanah Hemingway for more information.



\*\*\*\*\*

**Hebrew reading with Erich Zameret—Tuesdays at 6pm**



**Sweet Songs: A Journey into the Book of Psalms**

**Meeting on Tuesday nights**

**May 6, 13, and 20 at 7:00 pm**

**and continuing on selected Tuesdays**

**throughout the coming months.**

**Please let Rabbi Karol know if you plan to attend by email ([rabbi@tblc.org](mailto:rabbi@tblc.org)) or by calling Temple.**



Betsy Ehrenberg, Anti-Defamation League of New Mexico Board Chairperson, spoke to our Religious School students on Sunday, April 13 about bullying and other issues related to discrimination and prejudice. Betsy spoke to the congregation during our Shabbat service on Friday, April 11, to mark the 100th anniversary of the founding of the Anti-Defamation League.



Rabbi Karol spoke on behalf of the NMSU Interfaith Council at the groundbreaking for the NMSU Spiritual Center on April 25, 2014. Standing to his left is NMSU President Garrey Carruthers.

## Piatigorsky Foundation Concert-THANK YOU!



A huge thank you to everyone who helped make the April 19th Piatigorsky Foundation Concert with Richard Dowling and Qing Li such a success: those of you who made financial donations, the Adult Education Committee,

Mike White of White's Music Box for tuning the piano, and everyone who came to enjoy a wonderful evening of music in our sanctuary. Check out the Piatigorsky Foundation website at <http://piatigorskyfoundation.org/media/photo-gallery/> to see a few photos.



**Temple Beth-El Sisterhood's Jewish Women's Spirituality group,**



led by Susan Lapid, is still meeting periodically,

For more information,

contact Susan Lapid 496-5758, [sblapid@gmail.com](mailto:sblapid@gmail.com) or Leora Zeitlin 639-4475, [lzeitlin@cs.nmsu.edu](mailto:lzeitlin@cs.nmsu.edu).



## 2014 Jewish Food and Folk Festival

Thank you to everyone who helped and participated in the first ever **Temple Beth-El Jewish Food and Folk Festival!** The JFFF was a huge success and it would not have been possible without the many hands, time, and

efforts from our Temple members. We are awestruck by the way the Temple community came together for this event!

We think that the *Las Cruces Sun-News* sound-off item that appeared a couple of days after the event said it all: **“FESTIVAL:** I wanted to say that I really enjoyed the Jewish food and folk festival. The food was delicious and it was so nice to see another group, another congregation, have a voice present in the community.”

The festival cleared over \$11,000 for our Temple's programs, and we were able to highlight our Temple and culture to the diverse crowds of people from the community.

Thank you again to our sponsors:

### Challah Helpers

Frances Williams

Integrative Medical Center of NM (Burt & Ann Berkson)

Sleep Lab of Las Cruces (Dr. Paul Feil)

### Bagel Buddies

Dr. Dan & Simy Allan

Gary & Alison Mann

Jerry & Jodie Nachison

Jim Rosenthal & Marianne Panzini-Rosenthal

### Event Organizing Team

Big thanks to Board President Dee Cook, who helped to lead this team and the Food Team, Debbie Levy (designed and printed our beautiful tickets), Rabbi Larry Karol, Brenda Parish (and ticket central), and Michael Mandel

### Food Team

Ann Berkson, Dee Cook, James Kramer, Paula Kramer, Michael Mandel, David Zeemont

### Family Fun Team

Marieka Brown, Pearie Bruder, Elisha Rosenberg

### Decorations and Signage

Rhonda Karol, Robin Labe, Adam Labe, and Lily Labe.

### Silent Auction

Sue Mazer and her team of volunteers, including the Knitting Group and Gerie's table. Thank you to all who donated auction prizes! You will receive a **letter soon for your tax purposes.**

### Judaica Shop

Michele Blum

### Entertainment

Rabbi Larry Karol and Friends!

### Folk Dancing

Erich Zameret & the Mesilla Valley International Folk Dancers

### Program Book

Christi & Dan Rubin

Special thanks to **Tom & Debbie Levy and Tony Pope at Party World for generously donating the tent.** And the Levys for covering the credit card charge fees as well.

Thank you to Rabbi Larry and Rhonda Karol, for attending planning meetings and offering support and guidance, and the Rabbi for always accepting “homework” from us, as well as laminating and buying last minute items in the twelfth hour.

Thank you to Elissa Poel for talking Rebecca into chairing who then talked Aggie into co-chairing.

Warmest thanks to all of you. We look forward to next year!

Rebecca & Aggie

Co-Chairs

[becca@beccaleccahi@hotmail.com](mailto:becca@beccaleccahi@hotmail.com)

[aggie@nmsu.edu](mailto:aggie@nmsu.edu)



## Our First Jewish Food and Folk Festival—April 6, 2014



## MORE from our First Jewish Food and Folk Festival—April 6, 2014



**ISRAEL UPDATE****A Young Israeli to American Jews: Wake up!**

The following article was written by Hen Mazzig, a young Israeli now serving as Campus Coordinator of the Pacific Northwest chapter of StandWithUs! ([www.standwithus.com](http://www.standwithus.com)). His commentary was published in the 4/25/14 edition of The Times of Israel ([www.timesofisrael.com](http://www.timesofisrael.com)). Here is what he had to say. Phil Alkon.

As a young Israeli who had just completed five years of service in the IDF, I looked forward to my new job educating people in the Pacific Northwest about Israel. I was shocked, however, by the anti-Israel bigotry and hostility I encountered, especially in the greater Seattle area, Oregon, and Berkeley. I had been very liberal, a member of the leftist Zionist party, Meretz, but the anti-Semitism and hatred for Israel that I have seen in the U.S. has changed my outlook personally and politically.

As part of my work as an educator at StandWithUs, I traveled to college campuses, high schools and churches, sharing the history of modern Israel. I also shared personal stories about growing up in the Jewish state, and about my family. I always spoke about my military service as an officer in an IDF COGAT unit that attends to the needs of Palestinian civilians who are not involved in the conflict and promotes Palestinian civil society. I have shared my personal story with over 16,000 people at many, many college campuses and high schools, including UC Berkeley, Stanford, the University of Washington, Seattle University and many others. Many of those to whom I spoke were supportive, friendly, and open to hearing about my Israel. But, sadly, far too many were not.

When I served as a soldier in the West Bank, I got used to having ugly things said to me, but nothing prepared me for the misinformation, demonization of Israel, and the gut-wrenching, anti-Israel, anti-Semitic hostility expressed by many students, professors, church members, and even some high school students right here in the Pacific Northwest. I was further shocked by how unaware the organized Jewish community is and how little they are actually doing to counter this rising anti-Semitism, which motivated me to write this article.

This new form of bigotry against Israel has been called the “new anti-Semitism,” with “Israel” replacing “Jew” in traditional anti-Semitic imagery and canards, singling out and discriminating against the Jewish state, and denying the Jewish people alone the right to self-determination. The new anti-Semitism is packaged in the

Boycott, Divestment and Sanctions campaign (BDS), which claims to champion Palestinian rights though its real goal is to erode American support for Israel, discredit Jews who support Israel, and pave the way for eliminating the Jewish state. It is surprising that an extremist group like BDS is ever taken seriously, but BDS advocates have found receptive audiences in some circles. Their campaigns are well organized and in many cases, well financed. They have lobbied universities, corporations, food co-ops, churches, performing artists, labor unions, and other organizations to boycott Israel and companies that do business with Israel. But even if these groups don’t agree to treat Israel as a pariah state, the BDS activists manage to spread their anti-Israel misinformation, lies and prejudice simply by forcing a debate based on their false claims about Israel.

To give you a taste of the viciousness of the BDS attacks, let me cite just a few of the many shocking experiences I have had. At a BDS event in Portland, a professor from a Seattle university told the assembled crowd that the Jews of Israel have no national rights and should be forced out of the country. When I asked, “Where do you want them to go?” she calmly answered, “I don’t care. I don’t care if they don’t have any place else to go. They should not be there.” When I responded that she was calling for ethnic cleansing, both she and her supporters denied it. On other occasions, anti-Israel activists called me a rapist. The claims go beyond being absurd – in one case, a professor asked me if I knew how many Palestinians have been raped by IDF forces. I answered that as far as I knew, none. She triumphantly responded that I was right, because, she said, “You IDF soldiers don’t rape Palestinians because Israelis are so racist and disgusted by them that you won’t touch them.”

Israel cannot fight this big battle alone. If you are affiliated with a Jewish organization, let it know you want it to actively, openly and unequivocally oppose the BDS campaign and those who support it. Inform yourself, your friends and families, by visiting websites of organizations like StandWithUs, Jewish Virtual Library, AIPAC, AJC and others that will update you and provide information about BDS and anti-Semitism. I urge the organized Jewish community and its members to wake up and stand up for the Jewish state of Israel, and for all it represents, and for all it works to achieve.

**Rabbi Karol will be away on May 25-June 3 in New England and New York (including participation in the retirement of his brother, Rabbi Steve Karol, from the congregational rabbinate). In case of any urgent concerns, please call Dee Cook at 575-521-7319.**

### **Hello but Good-bye**

Although I have been saying “good-bye” for the past dozen years, this “good-bye” is different. It’s different because I know and am saddened that it will not be followed with a “hello”!

Every year, when I return to New York, I find that I am constantly thinking and talking about so many people from our congregation. I talk about your interests, about your expertise and of the energy that is directed towards your vision of social change.

I want to thank all of the members of our congregation for opening my mind to so many avenues of thought and for enriching my life during the past years.

I especially want to thank Rabbi Karol for his much appreciated availability in my time of need and for the concerns that ensued. It is most comforting to know that our Rabbi Karol is sensitive and caring and that he is always there for the members of the congregation.

I wish you all good health and many future years to enjoy your lives in this hidden treasure of the city of Las Cruces.

With much sadness,  
*Selda Steckler*

### **Ladies Clothing Contributions for La Tienda de Jardin**

La Tienda de Jardin, located at 335 La Colonia Ave (at the southwest corner of Alameda and Main St), would greatly appreciate contributions of ladies clothing, jewelry, shoes, handbags and household items. La Tienda does the following very well:

- It supports Jardin de Los Ninos, a local charity that takes care of homeless and near homeless children and families.
- Purchases help mostly working women dress appropriately at a fair price.
- The donations help those who donate keep their closets tidy while doing a good deed.
- Items not sold are given to other charities and nothing goes to a landfill.

If you have not visited us, please do. We are open Monday-Friday, 10am to 5pm and Saturday at 10am to 2pm. If a pick-up would help you make your donation or you need more information, please call Joan Silar at 521-1925 or Bea Klein at 526-2684.

### **Ongoing Events at TBE**

#### **WEEKLY TEMPLE BREAKFAST**

Weekly breakfasts and discussions of Jewish and general interest topics are held at the Temple every Wednesday morning. Breakfast begins at 8:45am, speaker presentations begin at 9:00am. The cost is \$2.00 weekly or \$6.00 monthly. Please contact Phil Alkon ([philipalkon@gmail.com](mailto:philipalkon@gmail.com) or 575-524-6945) for further information.



#### **MENSCH CLUB**

For more information about meetings and events,, contact Dave Zeemont at 523-0913 or email at [mudjob@earthlink.net](mailto:mudjob@earthlink.net)

**KNITTING GROUP**—A knitting group meets at TBE on Tuesday mornings at 10:15 am. For more information, please contact Deana Kessin at 521-4077 or [Kessin@comcast.net](mailto:Kessin@comcast.net)



### **Tanah Hemingway**

(575) 524-4329  
most nights  
P.O Box 16318  
Las Cruces  
NM 88004

#### **Editing:**

Books, scientific papers, theses, dissertations

#### **Technical documents of all sorts.**

(for accuracy, continuity, organization, style  
grammar, readability, supportability, etc.)



**Dr. Paul Feil, M.D., ABSM**  
Pulmonary Medicine  
Sleep Disorders

2437 S. Telshor Boulevard  
Las Cruces, N.M. 88011  
[sleepc.com](http://sleepc.com)

(575) 522-2777  
Fax: (575) 522-4532

**THE CHESED GROUP**

Is here for members in need of assistance due to health issues. Please CALL well in advance:

- David Zeemont at 523-0913 if you need transportation to a medical appointment
- Sally Alkon at 524-6945 if you need transportation or someone to shop for food
- TBE office at 524-3380 if you would like a hospital visit from Rabbi Karol
- TBE office at 524-3380 if you do not drive and need a ride to Temple services.

If you are interested in being a coordinator/helper/driver for services or temple events, please call

Dave Zeemont at 523-0913

**Temple Beth-El Seder—THANK YOU!**

I would like to thank everyone who participated in making our First night Seder (110 congregants and guests participated!) a wonderful, successful evening.

First of all, thank you Rabbi Karol, for a beautiful Seder, and Rhonda, for all her extra dishes and help she provided.

I would like to thank Lynn Zeemont for being able to procure our Seder in a beautiful atmosphere, and for



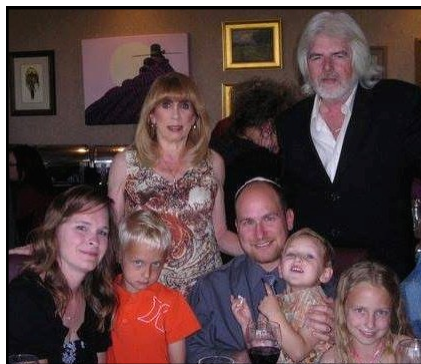
whatever magic she cast on the administration at Picacho Country Club to make this event happen!. My thanks to Susan Michelson for her meticulous record

keeping and receipts of all the checks that came to her.

I want to thank the following people who contributed

to our Seder with food, Seder plates, and/or matzo covers: Dee Cook, Ann Berkson, Karen Currier, Monika Kimball, Alison Mann, Susan Michelson, Terri Sugarman, Pearie Bruder, Elisha Rosenberg, Susan Fitzgerald, Rhonda Karol, Jodie Nachison, and Lucien Balthuch. If I left anyone's name out, please accept my apology. Thanks again, everyone, for making this evening a success.

*Michele Blum, Chairperson*



## Tzedakah Opportunities at TBE

### Giving to Casa de Peregrinos & El Caldito

*The food for May*

*for Casa de Peregrinos is Pasta of all kinds*

*Foods for May for El Caldito are*

*Tuna fish, rice, pasta and peas. El Caldito also needs jars with lids and plastic bags.*

Casa de Peregrinos provides staple foods to the needy, and El Caldito provides a hot meal 365 days a year to the hungry in our community. Both organizations are part of the Community of Hope located on the same campus at 999 W. Amador. There are common interests and goals and the food received is often shared between the two organizations in order to best utilize both perishable and non-perishable foods. Please bring something for one or both of these organizations. For more information or questions, contact

- Liz Lewis-Olson, Casa de Peregrinos (elewis4@comcast.net)
- Eve Palanker, El Caldito (palanker1@msn.com)

**VISITING CONGREGANTS****WHO ARE ILL OR HOME-BOUND**

At Temple Beth-El, we depend on you, our members, to inform us if you know of someone who needs a visit, especially if they are in a hospital or a rehabilitation or assisted living facility, and also if they are not able to leave their homes due to health-related issues. In order for us to keep our list of who needs a visit current, we ask you to call or email Rabbi Karol (rabbi@tbcl.org) with the names of congregants who you know would like to be visited. We appreciate your cooperation in this area, so that we can be, as much as possible, a truly caring community.

**Congratulations to:**

Congratulations to Aaron Hyman, son of Michael and Stacey Hyman, on passing 2nd and 1st class Board Review for Boy Scouts.



**Temple Beth-El is on Facebook!**

<http://www.facebook.com/pages/Temple-Beth-El/115816285166004>

**If you are on Facebook already, find our page, click "Like" and join us on our new Facebook community!**

## Donations through April 27, 2014

### Rabbi's Discretionary Fund:

- Joseph Bell, in memory of Jeanne Brancato
- Abby & Jordan Train
- Becca & Gilbert Krebs
- Katherine Fernald, thank you to Rabbi Karol
- Carol Schulman & Ralph Barocas, for the friendly welcome from Temple Beth-El members at Friday night services
- Lynn & Dave Zeemont, in honor of birth of Silas Leo Blum, grandson of Michele & Allen Blum
- Ruth Ann & Barney Sugarman – in memory of Lillian Cooper

### Rabbi Gerald M. Kane Adult Education Fund:

- Rabbi Gerald & Cyrille Kane, in memory of Ruth Terman, Coleman Greenberg and Harry Glazer.
- Irving & Harriett Wolf, in memory of Ruth Terman, Cyrille Kane's mother

### Library Fund:

- Lynn & David Zeemont, in honor of the birth of their grandniece, Charlie Rose Saslowsky

### TBE Religious School:

- Selda Steckler, in memory of Morty Steckler

### General Operating Fund:

- Zuki & David Fishman, in memory of Jack Landau
- Claire Bellak, in support of Temple Beth-El
- Mel and Dia Taylor, in memory of Gayle Kiteley
- Louise Feldman-Baskey, on behalf of the Wednesday Breakfast club
- Ann & Burt Berkson, in honor of Rebecca Berkson & Aggie Saltman for a job well done for the JFFF
- Diane & Harry Bass, in memory of Ida Bass
- Abe Pomerantz, in memory of Ida Bass
- Ann Hansen, in memory of Carl F. Hansen
- Grace Hammesfahr, in honor of Nina & Irv Rothman
- Brenda Parrish, in memory of Terry Petty
- Nancy Rosen, in memory of William Elperin and Joseph Friedlander
- Suzanne & Norman Mazer, in memory of Alice & Jacob Mazer
- Becca & Gil Krebs

### BETY Fund:

- Bryan McCuller, in memory of James S. McCuller

### TEMPLE FUNDS—From the Treasurer

Donations are gratefully accepted for the following:

***Torah Endowment Project***—For the purchase of a new Torah. Donations above the cost of the Torah are used to secure the financial future of the Temple.

***General Operating Fund***—For the day-to-day operation of TBE.

***Fund 2004***—For upkeep on our new building.

***Community Service Fund***—For projects that benefit our community and Las Cruces and Southern New Mexico.

***Send a Kid to Israel Program (S.K.I.P. Fund)***—To send Temple youth to Israel.

***Irving Batkin Memorial Scholarship Fund***—To provide a Jewish education for our children. Earnings from this fund are used mainly to offset the cost of operating our Religious School.

***Frances Williams Library Fund***—To provide books and infrastructure for the TBE library.

***Rabbi's Discretionary Fund***—Rabbi Karol uses the Discretionary Fund to meet a variety of philanthropic requests as well as to supplement TBE programs.

***Rabbi Gerald M. Kane Adult Education Fund***—Provides funds to help further adult education and cultural programming at TBE.

***Beth El Temple Youth Fund***—Provides support for Youth activities at TBE.

Periodically the temple may list short-term projects or needs. Contributions that do not specify a project or fund will be added to the General Operating Fund. If you have a question or wish to contribute to a project not listed here, please contact our Temple Beth-El Treasurer, Bill Stein.



Honor the memory of loved ones with a memorial plaque and mark celebrations and milestones (and also the memory of friends and family) by adding leaves to our Tree of Life.

**MAY 2014 (IYAR-SIVAN 5774)****Yahrzeits-May 4, 2014 through May 31, 2014****Read on Friday, May 2 and Saturday, May 3**

Ida Bass\*, Mother of Harry Bass and sister of Abe Pomerantz  
 Devorah Hackman Cohen, Mother of Tanah Hemingway  
 Max Bruder\*, Father of Murray Bruder  
 Henry Frank\*, Father of Lester Frank  
 Joseph Friedlander, Grandfather of Nancy Rosen  
 Shirley Greenberg, Aunt of Cyrille Kane  
 Max Greenfield\*  
 Jacob Kellner\*  
 Jack Landau, Father of Zuki Fishman  
 Sam Levine, Father of Michael Levine  
 Rosalie Muffs\*, Wife of Sidney Muffs (Father of Carol Bernstein)  
 Byron Saltman, Father of Mark Saltman, Grandfather of Jacob and Hannah Saltman  
 Sadie Sugarman, Mother of Barnett Sugarman  
 Isador Edward Tapper, Father of Dan Tapper

**Read on Friday, May 9 and Saturday, May 10**

Joseph H Bell, Father of Joseph Bell  
 Harry Berkove\*  
 Saul Blum, Father of Allen Blum  
 Hilda Deutschman, Grandmother of Ellen Torres  
 Lily Edwards, Mother of Peter Edwards  
 Gerry Leaser, Brother of Helen Raphael  
 Morris Leibson\*  
 Rebecca Pomerantz\*, Mother of Abe Pomerantz  
 Irving Rubinstein\*  
 Milton Silverman\*  
 Fanny Strauss\*  
 Mark Wechter  
 I.A. Wechter\*  
 Sidney Weiss, Cousin of Abe Pomerantz  
 Zvi Zeitlin, Husband of Marianne Zeitlin, Father of Leora Zeitlin

**Read on Friday, May 16 and Saturday, May 17**

Hilda Berkeley, Mother of Arthur Berkeley  
 Tamara Entin, Grandmother of Jason Rosenberg and Joshua Rosenberg  
 Abraham Gordon, Father of Harvey Gordon  
 Irving Kallman\*, Uncle of Ann Hansen  
 Ruth Karol, Mother of Rabbi Larry Karol  
 Stanley Kasten\*  
 Jack Kelter\*, Father of Stuart Kelter and Susan Lapid  
 Dora Kirschner, Grandmother of Bob Kirschner  
 Lew Kruger, Brother of Charles Kruger  
 Bessie Rothschild\*

**Read on Friday, May 23 and Saturday, May 24**

Irving Benowitz\*, Father of Simy Allan  
 Rae Dorfman\*, Sister of Abe Pomerantz  
 Harold Duetschman, Uncle of Ellen Torres  
 Beverly Fein, Mother of Mark Singer

Beverly Friedman (Basha Tzivlia), Mother of Stefani Singer  
 Jerome Herman, Father of Avis Herman Lewis  
 Harold Kane, Father of Rabbi Gerald Kane  
 Frances Klemptner, Grandmother of Dee Cook  
 Meyer Lieberman, Father of Michael Lieberman  
 Louis Rashall\*, Grandfather of Tina Silverman-Schwartz  
 Mollie Segal, Grandmother of Michele Blum  
 Leland Trafton\*  
 Nate Wagner\*

**Read on Friday, May 30 and Saturday, May 31**

Gertie Davison\*  
 Nat Dorfman\*, Brother-in-law of Abe Pomerantz  
 Gussie Friedman, Grandmother of Stefani Singer  
 Martin Harris, Father of Nancy Rushforth  
 Pauline Rosenberg, Grandmother of Joshua Rosenberg and Jason Rosenberg  
 Alice Ross, Mother of Irwin Ross  
 David Schwartz\*  
 Hana Segen\*  
 Ben Silberman, Father of Cyrille Kane

***The Temple Beth-El family  
 extends condolences to:***

***Peggy Petrowsky and family,  
 on the death of her husband,  
 Jack Petrowsky, on April 15, 2014.***

***Julie Seton and Katie Ham,  
 on the death of Julie's brother/Katie's uncle,  
 Daniel Seton Barber, on April 17, 2014.***

***Tanah Hemingway, on the death of her cousin,  
 Joel Roth, on April 25, 2014.***

***May their memories be for blessing.***

In order to ensure that the name of your loved one will be recited during services, we have instituted the following practices:

- The Hebrew dates for each week's Yahrzeits are listed in each Newsletter.
- Hebrew vs. conventional calendar: The temple's tradition is to base the Yahrzeits list on the Hebrew calendar. Those who wish to have a name read on a Friday night close to the conventional calendar date are asked to please email or call the administrator a few days prior to the service.

\*Asterisks at left indicate that a loved one has been permanently memorialized with a plaque in the Temple sanctuary. If you are interested in acquiring a plaque for your loved one, contact the Temple office.



**HAIR DESIGNS**  
**522-3959** (next to the Hilton)

Telshor Tower Plaza, 755 Telshor Blvd., Bldg. C, Ste. 201, Las Cruces, NM



**BakeHouse**  
 We're not interested in making a lot of bread.  
 We're interested in making the best bread.

**Traditional European Sourdough Breads**  
**Authentic Jewish Bagels and Bialys**

575-520-9533 • [www.bakehouse.net](http://www.bakehouse.net)  
 Every Saturday at the Las Cruces Farmer's & Crafter's Market  
 In front of White's Music box from 8am to 1pm.

- NO Commercial Yeast • NO added Sugar • NO Fats • NO Dairy • NO Preservative
- Naturally Leavened • Long Fermentation • Produced in Small Batches
- Each Loaf, Bagel and Bialy is Hand Shaped
- Bagels are boiled • Orders accepted
- Baked in our WOOD FIRED OVEN

BakeHouse is a fully insured and NM Board of Health Licensed and approved food processor & caterer



**Willman**  
 CERTIFIED PUBLIC ACCOUNTANT

Lisa J.O. Willman  
 (575) 522-3882  
 Fax: (575) 522-3889  
 Email: [willman@zianet.com](mailto:willman@zianet.com)  
 1744 S. Triviz Dr.  
 Las Cruces  
 New Mexico  
 88001



COPIERS, PRINTERS, FAX

**PTS**  
 OFFICE SYSTEMS, INC.  
 The Future of Office Technology



PTS Office Systems, Inc.  
 2840 N. Telshor  
 Las Cruces, NM 88011  
 575.524.4384  
 575.524.9818 FAX  
[www.ptsofficesystems.com](http://www.ptsofficesystems.com)

**Kevin Horner**  
[khorne@ptsofficesystems.com](mailto:khorne@ptsofficesystems.com)

Dedicated to the American Homeowner  
[evelyn@homeslascruces.com](mailto:evelyn@homeslascruces.com)  
 575-650-7224



*Evelyn Bruder*  
 Associate Broker

[www.homesforsaleinlascruces.com](http://www.homesforsaleinlascruces.com)




**SONOMA RANCH**

**David M. Steinborn**  
 Construction & Development  
 Sonoma Ranch Golf  
 Sunset Grill

**141 Roadrunner Parkway**  
**Suite 224**  
**Las Cruces, NM 88011**

**575.521.0770 (office)**  
**575.644.3136 (cell)**

**david@sonomaranch.com**



**THE PRONTO PLUMBERS, INC**  
 P.O. Box 100 Mesilla Park, NM 88007  
 575 524-9349



# MAY 2014

Sun	Mon	Tue	Wed	Thu	Fri	Sat
				Iyar 1 1	Iyar 2 2 FAMILY SHABBAT Tot Shabbat 6pm Potluck Dinner 6:30 pm Family Shabbat Service 7:30 pm	Iyar 3 3 Talmud Study 9:00 am Shabbat Morning Service 10:15 am
Iyar 4 4 Religious School FINAL SESSION 9:00 am Mensch Club Film Promises—2pm	Iyar 5 5	Iyar 6 6 Knitting Group 10:15 am ISRAEL INDEPENDENCE DAY <u>Hebrew/Erich 6pm</u> A Journey into the Book of Psalms 7:00 pm	Iyar 7 7 Wednesday Breakfast 8:45 am Torah Study 10:15 am	Iyar 8 8	Iyar 9 9 Shabbat Service 7:30 pm	Iyar 10 10 Talmud Study 9:00 am Shabbat Morning Service 10:15 am
Iyar 11 11 Mother's Day	Iyar 12 12	Iyar 13 13 Knitting Group 10:15 am <u>Hebrew/Erich 6pm</u> Sweet Songs: A Journey into the Book of Psalms 7:00 pm	Iyar 14 14 Wednesday Breakfast 8:45 am Torah Study 10:15 am	Iyar 15 15	Iyar 16 16 Meditation at 7:15 pm in the Sanctuary Shabbat Service for Renewal of Spirit 7:30 pm	Iyar 17 17 Talmud Study 9:00 am Shabbat Morning Service 10:15 am
Iyar 18 18 2:00 pm <u>Tikkun Olam</u> : Interfaith perspectives on work, wage, justice and the economy	Iyar 19 19	Iyar 20 20 Knitting Group 10:15 am <u>Hebrew/Erich 6pm</u> Sweet Songs: A Journey into the Book of Psalms 7:00 pm	Iyar 21 21 Wednesday Breakfast 8:45 am Torah Study 10:15 am	Iyar 22 22 Temple Beth-El Annual Meeting 7:00 pm	Iyar 23 23 Shabbat Service 7:30 pm	Iyar 24 24 Talmud Study 9:00 am Shabbat Morning Service 10:15 am
Iyar 25 25	Iyar 26 26 Memorial Day	Iyar 27 27 Knitting Group 10:15 am Hebrew/Erich 6pm	Iyar 28 28 Wednesday Breakfast 8:45 am NO TORAH STUDY	Iyar 29 29	Sivan 1 30 Shabbat Service 7:30 pm Led by Rabbi Jerry Kane	Sivan 2 31 Talmud Study 9:00 am Shabbat Morning Service (led by Leora Zeitlin and Stuart Kelter) 10:15 am

## Temple Beth-El, Las Cruces, New Mexico

MAY 2014 (IYAR-SIVAN 5774)

3980 Sonoma Springs Avenue  
Las Cruces, NM 88011  
Office Hours:  
Monday-Friday, 9:00am--1:30pm

Phone: 575.524.3380  
Fax: 575.521.8111

President: Dee Cook

Rabbi Lawrence P. Karol  
rabbi@tbelc.org

The Temple Beth-El Newsletter is produced regularly at Las Cruces, New Mexico. Editor: Rabbi Lawrence P. Karol. Copy Editors: James Rosenthal, Tanah Hemingway, Rabbi Gerald M. Kane. Circulation: Administration Office. We welcome Adelante sponsorships by or for Temple members and non-members. Sponsorships can be mailed to the Temple; receipts are provided upon request. We reserve the right to edit all sponsorships. Nonmember sponsorships \$25/year. One month sponsorship insertions \$108. Annual sponsorship rates as follows: 2x3 business card \$150; Quarter page \$300; Half page \$600. For information about sponsorships or insertions, please contact the Temple Office.

**Temple Beth-El and “Adelante” are on the web at  
[www.tbelc.org](http://www.tbelc.org)**

OR CURRENT RESIDENT

May, 2014



Temple Beth-El  
3980 Sonoma Springs Avenue  
Las Cruces, NM 88011