

Adelante!

A Monthly Publication for Temple Beth-El,
Las Cruces, New Mexico



JULY 2019 (SIVAN-TAMMUZ 5779)



Shabbat Services (See Page 2)

- Friday, July 5—7:00 pm—NO EARLY SERVICE NOR DINNER THIS TIME— Shabbat service at 7:00 pm, led by Erich Zameret and Ruth Rubin.
- Friday, July 12—Shabbat service at 7:00 pm.
- Friday, July 19 -Shabbat service at 7:00 pm.
- Friday, July 26 —Shabbat Service for Renewal of Spirit at 7:00 pm.

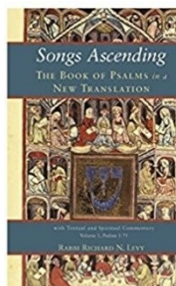
Saturdays

Talmud Study at 9:00 am, Shabbat Service at 10:15 am, followed by a potluck Kiddush

Summer Shiurim (Study) with Rabbi Karol

The Song Never Ends:
Exploring the Psalms
Mondays at 7:00 pm
July 1, 15 and 22

All materials will be provided.
We will be using Rabbi Richard
Levy's (z"l) *Songs Ascending* commentary on the
Psalms as our guide.
Please let Rabbi Karol know if you plan to attend.



Message from Rabbi Karol D'var Torah on June 14, 2019 "Blessings from above and below"

Most days, I find myself looking to the sky around the time of sunset. Even cloudless evenings feature a colorful glow on the horizon after the sun has completed its descent. For me, though, it's the

clouds, their ever-changing shapes, and the vast array of colors that ensue that make the sunset views to which we are treated so spectacular.

CONTINUED ON PAGE 3

**50 years (plus) and counting:
A Summer Matinee Sing-Along!
Sunday, July 14 at 3:00 pm
Following an Ice Cream Bar
(with MANY fixings),
Rabbi Larry Karol will present a
special set-list...**



- Songs by the Beatles (as from the film "Yesterday")
- Songs by Elton John (as from the film "Rocketman")
- Hit songs of 1969
- American Folk Songs
- Several of his originals

**Please respond to Rabbi Karol at
rabbi@tbelc.org
or call 575-524-3380
to say if you will attend.
Join us for
a tuneful afternoon!**



Message from Temple President Cheryl Decker

Temple Beth El's Board held our first board meeting on June 19th. Returning and new Board members were encouraged to join one or more of Temple's committees to lend their talent, time and dedication.

CONTINUED ON PAGE 4

Worship Schedule

Please note: All 7:00 pm services will include either a Torah reading and a d'var torah, a brief discussion based on the Torah portion, a compilation of prayers and/or songs on the theme of the Torah portion, or a commentary that offers insight based on the parashah for the week.

THERE WILL BE NO FAMILY SHABBAT SERVICE IN JULY.

Friday, July 5

7:00 pm Shabbat Evening Service led by Erich Zameret and Ruth Rubin. An Oneg Shabbat will follow the service, sponsored by Beth Tierney.

Saturday, July 6

9:00 am. Talmud Study
10:15 am. Shabbat Morning Service led by Stuart Kelter and Potluck Kiddush
Parashat Korach Numbers 16:1-18:32
Haftarah First Samuel 11:14-12:22

Friday, July 12

7:00 pm Shabbat Evening Service—Rabbi Karol will speak on “Patience as a virtue.” An Oneg Shabbat will follow the service, sponsored by Carla Libby and Barbara Mandel. Dee Cook will represent the Board of Trustees.

Saturday, July 13

9:00 am Talmud Study
10:15 am Shabbat morning Service and Potluck Kiddush
Parashat Chukat Numbers 19:1-22:1
Haftarah Judges 11:1-33

Friday, July 19

7:00 pm Shabbat Evening Service—Rabbi Karol will speak on “Constructive Praise.” An Oneg Shabbat will follow the service, sponsored by Terri Sugarman. Steve Haydu will represent the Board of Trustees.

Saturday, July 20

9:00 am Talmud Study
10:15 am Shabbat morning Service and Potluck Kiddush
Parashat Balak-Numbers 22:2-25:9
Haftarah Micah 5:6-6:8

Friday, July 26

7:00 pm Shabbat Service for Renewal of Spirit, including prayers and music for healing and renewal. An Oneg Shabbat will follow the service, sponsored by Leslie Glater. Barbara Berger will represent the Board of Trustees.

Saturday, July 27

9:00 am Talmud Study
10:15 am Shabbat morning service & Potluck Kiddush
Parashat Pinchas Numbers 25:10-30:1
Haftarah Jeremiah 1:1-2

Friday, August 2

6:00 pm. Family Shabbat Service for all ages.
6:50 pm. Dairy/Vegetarian Potluck Shabbat Dinner.

Saturday, August 3

9:00 am Talmud Study
10:15 am Shabbat morning service & Potluck Kiddush
Parashat Matot-Mas'ei Numbers 30:2-36:13
Haftarah Jeremiah 2:4-28; 3:4

BOARD OF TRUSTEES 2019-2020

President-Cheryl Decker
Vice-President-Joanne Turnbull
Secretary- Steve Haydu
Treasurer- Michael Mandel
Barbara Berger Pearie Bruder Luke Duddridge
Martha Roditti Nan Rubin
Ruth Rubin Lynn Zeemont
Art Lorbeer (Mensch Club) Dee Cook (Sisterhood)
Rabbi Lawrence P. Karol

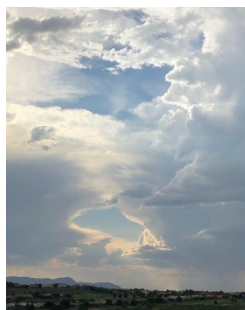
**The next regular Board Meeting will be held on
Thursday, July 18, 2019 at 7:00 pm**

MESSAGE FROM THE RABBI CONTINUED FROM PAGE 1

When I am not involved in a meeting or other activity at days' end, I keep my eyes trained on the western sky. I usually photograph the sunsets which I consider to be most impressive, sometimes more than once. I know that many of us appreciate the blessings which creation bestows on us each night, vistas that illustrate the diverse wonders in our world.

Every day, we have to carefully look for the blessings that are placed before us. Sometimes they are obvious. At other times, we are challenged to discover those proverbial "blessings in disguise," silver linings in dark clouds that will eventually shine brilliant light upon us and within us.

On Thursday, June 13, I was driving north on Roadrunner Parkway and saw two openings in the clouds that I would describe as "God's eyes," or, at least, as windows to the mysteries of creation. They were accidental cloud formations, for sure, but much more. They presented an unexpected gift of amazement. Such views have a way of making us turn aside, breathe, and experience awe and even holiness.

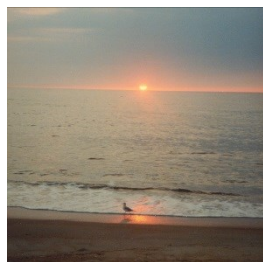


In July of 2000, Rhonda, Adam and I traveled to the Outer Banks of North Carolina for Rhonda's week-long cousin reunion. There were 27 of us in one large house. On Friday morning during that week, I woke up at 6:00 am, got dressed quickly, and walked over the one sand dune that separated us from the beach to see the sunrise over the Atlantic Ocean.



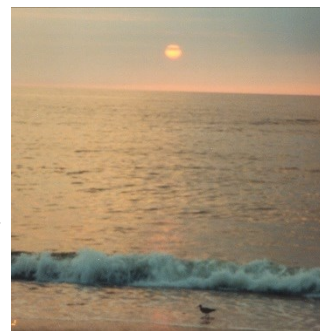
As I got my first glimpse of the eastern sky, I saw that the clouds appeared to extend all the way down to the horizon. I wondered what I was doing there, because I thought that I might see nothing but clouds. As the sun began to ascend, I realized that I was mistaken. There was a sliver of sky hovering just above the ocean. The sun shined through that space, and then, as it kept rising behind the clouds, I could see the veiled image of the sun. The view was simply incredible.

It was clear to me that it was the clouds that gave that sunrise its special character. I made sure to capture the scene in a series of photographs. In several photos, a single sea gull was walking on the beach, making a total of two of us who enjoyed creation's performance on that particular morning.



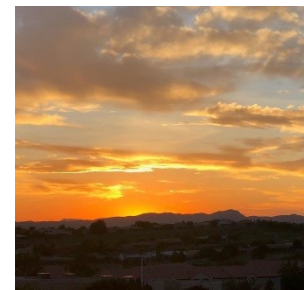
I realized, in retrospect, that if we think of the challenges we face every day as the "clouds" of our lives, then the

"sun" represents the ingenuity, patience and wisdom that we employ to overcome disappointments and difficulties. We are our own blessings when we discover solutions to our problems and dilemmas. If we are fortunate, we have people around us who can see us through those moments when the clouds seem daunting. Those colleagues, family members and friends who help us at those times, are, without a doubt, blessings to us.



Rhonda expressed some of those very insights in a poem she wrote in response to my sunrise photos. She described the ocean waves as cleansing us from what we need to leave behind so that we can move forward with resolve and hope. In March of 2001, I wrote my song, "You Can Open Your Eyes," as my thoughts finally came together about the deeper lessons of that day. Part of the song directly referred to the sunrise experience: "A brilliant dawn is breaking as the ocean kisses the shore; even through the haze, there is promise in store."

I still think about the insights I gained from that experience which, in some ways, parallel the Priestly blessing that I will read from the Torah in a few moments. Our service to each other, our sharing of our creativity in the form of songs, poetry, and the work of our hands, are blessings that we give and, hopefully, receive in return. The priestly blessing isn't only about how the Eternal One bestows upon us goodness, favor, and kindness. It is about how we are all God's representatives or messengers, or even angels, showering one another with the support we need to look beyond the clouds so that we can still see the blue sky peeking through, offering us the optimism that we need to wake up in the morning with our eyes open, with our spirits refreshed, with the confidence to present our best to the world, and with the humility to accept and to be grateful for the blessings that come our way. May we continue to bless and keep one another, with God's help, with love, with acceptance, and with peace.



L'shalom,

Rabbi Larry K.

See rabbilarrykarol.blogspot.com for Rabbi Karol's articles, Divrei Torah and sermons.

Rabbi Karol will be away on July 5-11 and July 28-31. In case of any urgent concerns, please call Cheryl Decker at 575-640-9559

MESSAGE FROM THE PRESIDENT CONTINUED FROM PAGE 1

I encourage congregation members to join a committee which sparks your interest, needs your expertise and voice.

In a concerted promise to keep our congregation informed, various Board members will be writing Adelante columns relating to what is happening within their purview.

Michael Mandel: Temple Treasurer, will be reporting every other month explaining where congregational funds are being spent and a synopsis of our financial situation.

Steve Haydu: Secretary, translates our board meeting conversation into concise minutes and those can be read in every issue of the Adelante.

Joanne Turnbull: Temple Vice-President, an accomplished author, has offered to write an occasional column on current, pertinent issues.

Again, this year, Board Members will be asked to share their thoughts on how they can assist TBE and why they said yes when asked to be on the Board, along with any personal information they wish to share.

For my part, I have committed to being in the office at least one day per week. I will be actively involved in Temple's administrative functions. Just as important, I want to be accessible to Temple congregants. I am asking you to meet with me or call with your concerns, thoughts, ideas and years of accumulated wisdom. I need your help, expertise, guidance and prayers, Temple Beth El needs each of you.

I am pleased to end my first report with security-related news. Temple Beth-El has received a one-time allocation of \$5,000 from the Jewish Community Foundation of El Paso. This money is to be used for enhancing security measures at Temple. These enhancements need to be incurred prior to the end of 2019. Areas where we might use these funds were suggested but the final decision is left to and dependent upon Temple's needs. Mark Saltman, Security

Chair and the Security Committee will advise and assist Temple with the final determination for allocation of the funds.

*L'shalom,
Cheryl Decker*

Thank you from the Mensch Club

The Mensch Club would like to thank all those who have made donations and have contributed to our efforts to help our congregation and the Las Cruces community. Some of the contributions will be used to finance the Rabbi Larry and Rhonda Karol camp scholarship fund.

We offer our gratitude to: Ellen and Alfred Torres-Sergio and Carmen Trego---Jane Grider---Sue Brown---Cherri Hudson and Jeff Brown---Burt and Ann Berkson---and Avis and Jeff Lewis.

We appreciate your generosity, and we look forward to using all the contributions in our mission to do good deeds.

Rabbi's note: I had not yet shared this note with the congregation. I appreciated these sentiments offered to us by Javed Iqbal and Sureyya Husain after the attack on the Chabad Center in Poway, California.

April 29, 2019

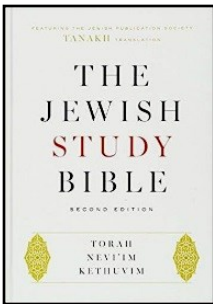
Shalom and Salaams Rabbi,

It is with the deepest of sorrow that we extend our condolences and support after the shooting in California this Saturday. Please communicate our prayers for your community and peaceful houses of worship that may spread to the world around us the true spirit of humility and support in doing good, and God-consciousness. We have been deeply affected by this terror attack; maybe it is a kind of sorrow fatigue. However, we all must stand together to stand for justice and all that is better.

Sincerely,
Javed and Sureyya
on behalf of the Las Cruces Muslim Outreach Group

ADULT EDUCATION

Culture תורה Holidays עברית Customs

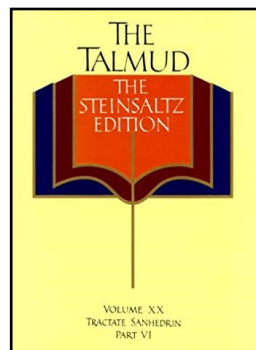


TANAKH STUDY

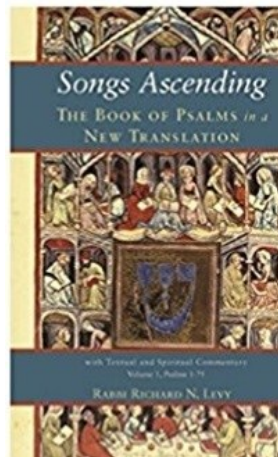
Sessions meet on Wednesday at 10:15 until 11:15 am. We are now studying the book of Nehemiah. (No sessions on July 10, July 17 and July 31).

LAY-LED TALMUD STUDY

Talmud study (in English) has been meeting every Saturday at 9:00 am for the past 25 years. New students are always welcome. No previous background or Hebrew knowledge is necessary. Contact Tanah Hemingway (524-4329) or Erich Zameret (ezmrt35@yahoo.com) with any questions. The Saturday morning service immediately follows.



**Summer Shiurim
(Study)
with Rabbi Karol
The Song Never
Ends:
Exploring the Psalms
Mondays
July 1, 15 and 22
at 7:00 pm**



All materials will be provided.

We will be using Rabbi Richard Levy's (z"l) *Songs Ascending* commentary on the Psalms as our guide. Please let Rabbi Karol know if you plan to attend.

Sometimes, milestones in our lives are created for us. Sometimes...we make our own. Would you like to fashion a landmark moment in your Jewish life?

Rabbi Larry Karol will guide you, along with other congregants who join this group, in a year-long process of learning, training and review that will culminate in an Adult Bar/Bat Mitzvah service next spring.

There are no prerequisites other than your desire to participate in this venture of gaining new knowledge and skills, engagement with fellow group members, and a commitment to persevere. Sessions will focus on Hebrew reading skills, the content and meaning of Jewish prayers, the significance of Torah and Haftarah readings, and the importance of communal prayer in the Jewish tradition.

If you are interested in enhancing your Jewish knowledge by preparing to lead worship at a very special service, please contact Rabbi Karol at 575-524-3380 or rabbi@tblc.org.



“A Night at the Auction” in January created many opportunities for gathering and service among our congregants. The photos below chronicle some of the results of our newest fundraising event! Join us for the 2020 Night at the Auction!



On Sunday, June 9, Ann Berkson and Rebecca Berkson hosted, at the home of Dee Cook, “Tea and Talent.” Cast members from the youth production of “Mary Poppins” sang songs from the show, while participants enjoyed English scones and other delicacies and, of course, tea!



Jeff Brown offered his services for dog-walking. Here he is with Dee Cook’s canine companion, Sassy!



Rabbi Larry Karol offered a sing-along evening which would feature selected songs from the years 1964 through 1974.



On Saturday, May 11, Rabbi Karol presented a 19 song set of songs from those years, complete with a songsheet and spirited participation, as well as dinner set out by our hosts for the evening!

*We found many reasons to be together at Temple Beth-El in 2018-2019....
Join us in 2019-2020 at gatherings that strengthen our community!*



NUMBERS AND NOTES

From our TBE Treasurer

Michael Mandel

July is the beginning of our, and many nonprofit's, fiscal year. You should have already received your dues notices. If you haven't or would like to discuss your dues, please e-mail me at mmaan-del@gmail.com (yes, there are two "a"s) or call me at 575-521-7311.

At the annual meeting, members were surprised that we had reached a fiscal dilemma and had to revise the rabbi's contract. For years, we had been inching down on income and had retained the same or greater expenses. In the past we had done seemingly single-time efforts like refocusing on a fair share pledge (2% of annual income, as noted on the membership application form) or an additional plea for reserve contributions, and we still have the same problems of affording our expenses. In December of last year, I had expected the normal influx of dues when people wanted to take their tax exemptions for that year. Because of the revised tax law, that wasn't the case and we reached a point where we had to rely on funds that were in our brokerage account. Those funds came from a few people's bequests. That is a finite stream of funding, and I hope to replenish that from our ongoing income.

We rely on our members to fulfill their pledges and we can only function if we have an accurate idea of the future based on our projected budget. We use QuickBooks to keep track of pledges and, as of now, we are still owed about \$16K on this past fiscal year's books.

Also at the annual meeting, I handed out a comparison of the past two years that showed how the membership and dues had declined between the years. That was a continuation of an ongoing trend that we have to deal with. We have been cutting costs in the past year. Some of the work we paid for has been taken over by Dave Decker and others. Other things we have changed or pared down. Art Lorbeer did an energy analysis to try to cut some of those expenses. We have tried to cut down on heating and cooling by closing doors between separate areas that have different time and temperature settings.

And we are making strides in engaging the congregation in Temple activities. Jim Rosenthal and the nominating/leadership committee continue to present

engaging forums. Phil Alkon has been featuring speakers for the Wednesday breakfasts. Sisterhood continues to be a vital force with a recent dinner and other events. The Mensch club has regular brunches and outside excursions. The Jewish Food and Folk Festival, the Matzo Ball Golf Tournament, and the Renaissance Faire Pastrami booth continue to draw people from outside the Temple. The Ways and Means Committee sponsored a very successful silent/live auction, the new fundraiser for this past year.

As a convenience for our members, you can pay your dues by transferring stock to our Schwab account from your personal IRA without selling it and having to pay taxes on the profit. If you would like to do this, please call me and I will give you the information to put on the form you can get from your broker.

Also, many people have filled out forms to donate from their banks on a monthly basis. Please contact me to get the form. Admittedly there have been some minor quirks, but none to discourage this practice.

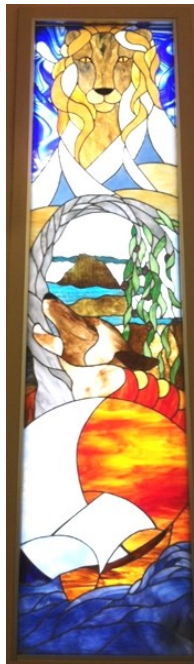
I am always open to new ideas and would be very glad to supply more details for those who would like to delve further into the Temple's fiscal environment.



Rabbi Larry Karol (at the left in this photo) joined his daughter-in-law Rabbi Juli Karol (holding the banner in the middle) as her congregation, Rodeph Sholom, marched in the Celebrate Israel parade in New York City on Sunday, June 2, 2019.

Rabbi's Note—A booklet was produced soon after the current building was opened, entitled **THE ART AND DECORATION OF OUR BEIT TEFILLAH**. Here is the explanation from that booklet for the Stained Glass Windows in our Sanctuary.

The Right Window



The **Lion** is the symbol of the tribe of **Judah**. Although he is fourth among his brethren, he is pre-eminent. Of him Jacob says, "He crouches, lies down like a lion" (Genesis 49:9). Judah himself is destined to be the progenitor of two key figures: David, Israel's greatest King; The Messiah (Mashiach, in Hebrew), who will free Israel from its oppressors, and bring world peace. With the destruction of the Kingdom of Israel by the Assyrians in 721 BCE, the other tribes were taken into captivity, lost their identity and ceased to exist as Israelite clans. Only the Kingdom of Judah retained its identity. All present-day Israelites are Yehudim, or Jews, descended according to tradition from Judah.

Tents represent the tribe of **Gad**. The name may have something to do with "lucky". The root word may suggest a military force, hence, the symbol of tents – an army on bivouac.

Ocean and Olive Branch remind us of **Asher**. Asher means happy or satisfied. When Moses blesses the tribes, of Asher he says, "Most blessed of sons be Asher... May he dip his foot in olive oil" (Deuteronomy 33:24). Olive oil is a sign of richness and plenty. The ocean is included because the tribal territory of Asher bordered the Mediterranean Sea on Israel's north coast.

The **Wolf** is the symbol of the tribe of **Benjamin**, who was Jacob's youngest son and Joseph's full blood brother. Jacob says of Benjamin, "Benjamin is a ravenous wolf; in the morning he consumes his foe, and in the evening he divides the spoil" (Genesis 49:27). Israel's first king, Saul, was a Benjaminite, as was Mordechai, hero of the Scroll of Esther.

The **Sun** is the sign of **Issachar**, fifth son of Leah. Though the Biblical text does not compare him to the sun, he is remembered for hard work, satisfaction and living a quiet life. His name means "God will reward." Perhaps the sun is an appropriate symbol for the pure joy of toiling under the sun earning one's bread.

The **Ship** is the insignia of the tribe of **Zebulun**. In both Genesis 49:13 and Deuteronomy 33:18, he is associated with the sea, travel and commerce.

The Left Window

The **Breastplate**, with its four horizontal rows of three precious stones per row, is the symbol of **Levi**, the tribe of Priests. The twelve stones of the Breastplate stand for the tribes which comprise Am Yisrael. Their spiritual well-being as well as moral education rest in the hands of the tribe of Levi. It is only this tribe which has the authority to invoke God's blessing upon all Israel, and to offer sacrifices in their behalf. Thus, Moses says of Levi, "They shall teach Your (God's) laws to Jacob (People of Israel) and Your instructions to Israel. They shall offer You incense to savor, and whole-offerings on Your altar" (Deuteronomy 33:10). Levi is the only tribe which did not receive a portion of the Land of Israel in which to reside. Levites

lived among all the other tribes, performing their priestly duties. The people paid with tithes and sacrificial offerings.

The **Serpent and Scales** recall the tribe of **Dan**. Jacob says of Dan, "He shall judge his people as one of the tribes of Israel. Dan shall be a serpent by the road" (Genesis 49:17). The name Dan means "he judges". On the scales, etched into the pans, are the Hebrew words "din", judgment and "rachamim", mercy. Dan reminds us that a righteous judge must combine the two qualities to fulfill his duty.

The **Bull and the Unicorn** are symbols of **Joseph's** sons, **Manasseh** and **Ephraim**. Each of his sons is, therefore, said to be a half-tribe of the larger Joseph tribe. Why does the tribal tradition count Manasseh and Ephraim rather than Joseph? The reason is mathematical. If it takes twelve tribes one month each per year to sustain the Levites and the Temple, and if we remove the Levites who are not landowners, we are left with only eleven tribes. Thus, to reach twelve tribes excluding Levi, the Joseph tribe is divided into two half tribes. Since our windows include Levi, they actually depict thirteen tribes, though Manasseh and Ephraim technically comprise one Joseph tribe.

Moses says of Joseph that he is "like a firstling bull in his majesty..." (Deuteronomy 33:17) We also learn in Numbers 32 that the half tribe of Manasseh, together with the Reubenites and Gadites, raised cattle. Thus, the bull symbol is associated with Joseph's first-born, Manasseh.

Ephraim is the largest tribe of Israel with the largest territory. Jacob calls Joseph a "bein porat" (Genesis 49:22) which may mean "a fruitful vine". Moses' blessing of the Joseph tribe (Deuteronomy 33:13-17) speaks of Joseph's bounty. The unicorn stands for fecundity. The great leader and general who succeeded Moses was Joshua, who hailed from the tribe of Ephraim.

To this day, Jews bless their sons on the eve of Shabbat with these words which Jacob spoke to his grandsons, Manasseh and Ephraim:

"By you shall Israel invoke blessing, saying:

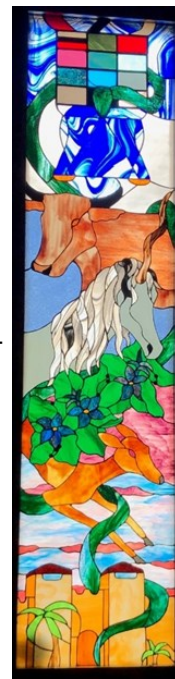
God make you like Ephraim and Manasseh". (Genesis 48:20)

Mandrake Flowers recall the tribe of **Reuben**. Ancient folk medicine advocated the mandrake root as a cure for infertility. Reuben gathered some for his mother, Leah, who experienced an extended time of infertility after bearing four sons of whom Reuben was the eldest. For the full story, see Genesis 30:1-21.

The **Gazelle** stands for the tribe of **Naphtali**. Jacob says of Naphtali, "He is a gazelle let loose". (Genesis 49:21) He is remembered as a favored, blessed tribe. As the middle child of twelve, perhaps he excelled like a leaping deer in order to be noticed.

The **Fortress** is the standard of **Simon**. The territory of Simon was the farthest south in Israel. Perhaps Simon was responsible to stand firm in protecting Judah and Israel from marauding desert tribes. Ultimately, tiny Simon was absorbed into the tribe of Judah.

The artist: Diane Weeks, a stained-glass artist, was a member of Temple Beth-El when the new building opened.



Board of Trustees Meeting Summary June 19, 2019

- Jim Rosenthal, nominating committee chair, informed the board members that there would be a board orientation meeting on one of the Sundays in September. These orientations have been helpful in previous years. Jim asked if we had ideas about programs that would be beneficial to board members and congregants, along the lines of last year's leadership series. Jim also asked if there were particular notions that we'd like addressed at the orientation. Several board members offered suggestions. Topics included challenges at Temple Beth-El, looking at our shared values as Jews and Reform Jews, and Jewish perspectives on moral questions and beliefs from a Jewish perspective with regard to contemporary legal and moral views.
- Cheryl passed out several documents: Group norms; contact info; board member responsibilities.
- Cheryl shared a note from Alison Mann regarding board representation at funeral/memorial services, providing food at those times, and encouraging more congregants to sponsor Oneg Shabbat receptions. The Board members noted that board representation at funeral and memorial services would be important, and that we need to improve the way we get volunteers for Onegs and other food occasions. The Board discussed setting up a committee to make direct requests, or having standing committees each take a week or two.
- Michael Mandel presented the budget for the new fiscal year. After some discussion, it was passed unanimously.
- David Decker representing the Mensch Club announced the founding of the *Mensch Club Rabbi Larry and Rhonda Karol Summer Camp Scholarship Fund*, with the hope that it will

encourage more of our young people to attend the summer camp run by Congregation Albert, Camp Oranim. The Fund is already receiving generous donations.

- Martha Roditti reported on the Strategic Planning Committee. She provided several handouts and requested that she, Nan Rubin and Joanne Turnbull join the Strategic planning committee as board liaisons. She stressed the importance of maintaining a sense of community. The Board members offered feedback on the paperwork on the materials she shared. The Board agreed that designating a liaison or liaisons to the Strategic Planning Committee was appropriate.

Bricks for the Biblical Garden and Brick Walkway

will be ordered again in the coming months.



Please consider ordering one to mark that special occasion of yours or a loved one. Call Dee Cook or Alison Mann, and they will send you the form and even help you design the brick, if you wish. And take a few minutes to sit in the meditation area of the walkway...it's a lovely spot!



WEEKLY TEMPLE BREAKFAST

Weekly breakfasts and discussions of topics of Jewish and general interest are held at the Temple every Wednesday morning. Breakfast begins at 8:45 am, speaker presentations begin at 9:00 am. The cost is \$2.00 weekly or \$6.00 monthly. Please contact Phil Alkon for information at philipalkon@gmail.com or 575-524-6945)

Rabbi Karol in the Local and National Community in 2018-2019

• **Served in leadership positions in local organizations:** Convened a monthly Third Thursday clergy breakfast; served on the NMSU Interfaith Council; member of Las Cruces Health Policy Review Committee; participated in a weekly interfaith book discussion group.

Participated in Temple events open to the community:

• Joined Chava Mirel in leading the October 5, 2018 Shabbat service; performed an original song, "May We Gain Wisdom/Bayom Hahu," at the "Memories: A Temple in Las Cruces" presentation at the ASNMSU-CFTA Theatre on October 7, 2018; organized and moderated the Interfaith Dialogue program on November 18, 2018, "With Liberty and Justice for All: Leadership, Justice and Unity – what can we achieve together?"; led the Temple choir's participation in recording "Kumi Ori" as part of the Women of the Wall 30th Anniversary, and directed performances at the Jewish Food and Folk Festival on April 7, 2019 and at the Israel Independence Day celebration in El Paso on May 5, 2019; sang two songs with Julie Silver at her concert on May 15, 2019; led the "Interfaith Institute" session with Father Gabriel Rochelle of St. Anthony of the Desert Orthodox Church on May 21, 2019, focusing on the development of the biblical text.

Participated in local and statewide events:

• Organized and led a memorial service and vigil at Temple after the shootings at the Tree of Life synagogue in Pittsburgh on October 28 (180 people attended); joined rabbinic colleagues to explore border issues in El Paso on November 14 and 15, 2018; performed "Light One Candle" at the Community-Wide Celebration of Chanukah in El Paso at San Jacinto Plaza on December 9, 2018; offered a prayer at the NAACP Dona Ana Country Branch Martin Luther King Jr. walk on January 20 and delivered the invocation at the MLK Breakfast on January 21; on March 17, following a discussion about the fatal shootings at mosques in Christchurch, New Zealand, created, with the Machon (7th-10th grade) students, a message that was sent to leaders of the Islamic Center of Las Cruces; gave public comment at the Las Cruces City Council meeting on April 15, 2019 on an allocation for emergency assistance; sang "Yaysh Kochavim" at the El Paso Holocaust remembrance service at Temple Mount Sinai on April 28, 2019; organized the Holocaust Remembrance Service and screening of "No Asylum: The Untold Chapter of Anne Frank's Story" on May 1, 2019; spoke on "Jewish Contributions to American Life" at a White Sands Missile Range program on May 9, 2019.

Participated in national conventions and gatherings:

• Performed original songs at the 90th Anniversary Gala of Temple Beth Shalom in Topeka, Kansas on August 18, 2018; attended Shabbat Shira, a worship and music conference at Olin-Sang-Ruby Union Institute Camp in Wisconsin, on November 1-4, 2018; attended the Pacific Association of Reform Rabbis convention in Palm Springs, CA on January 6-10, 2019 (participated in a memorial service for a colleague's spouse and led the final night sing-along); attended the Central Conference of American Rabbis convention on March 31-April 3 in Cincinnati, Ohio; participated in an online class on "Writing Contemporary Liturgy" with Alden Solovy in October and November, 2018; participated in memorial tributes to music colleague/friend Angela Gold in St. Louis on May 13, 2019; marched with Congregation Rodeph Shalom of New York City in the Celebrate Israel Parade on June 2, 2019.

Gave presentations on Judaism in the community:

• Presented to the "Serra Catholic Vocations" group on Tuesday, June 26, 2018 about the path to becoming a rabbi; hosted a group from Peace Lutheran Church at our September 14, 2018 service; hosted members of NMSU Christians United for Israel at our November 30, 2018 service; presented on Chanukah at the Las Cruces Public Schools Amistad Pre-School on Thursday, December 6, 2018 (where Rhonda teaches); presented to a Cub Scout group on Tuesday, December 11 at Morningstar United Methodist Church.

Original writings featured in local and national publications and featured in media reports/stories:

• Columns in the *Las Cruces Bulletin*: "Grandmother taught me to be warm and welcoming," July 6, 2018; "The timeless messages of healing and hope," August 3, 2018; "Commandments to help practice a life of decency," September 7, 2018; "The Bible directs us to a life of justice and fairness," October 5, 2018; "Use wisdom when voting for our leaders," November 2, 2018; "Faiths united in humility, patience, service to others," December 7, 2018; "Faith evolves over the course of our lives," January 4, 2019; "Teach us to number our days," February 1, 2019; "In any language, do not forsake your roots," March 1, 2019; "Disdain toward a group of people brings disaster," April 5, 2019; "The greatest 'revenge' lies in changing a person's heart," May 3, 2019; "Heroic acts still need the coordination of a community," June 7, 2019.

• Columns in other publications: "Finding and Searching – A New Year Meditation" in the September 2018 *El Paso Jewish Voice*; "The Tree of Life and Tu Bish'vat" in the January 2019 *El Paso Jewish Voice*; "Until we are all free, we are none of us free" in April 2019 issue of the *El Paso Jewish Voice*; "Interfaith Activity in Las Cruces" in the Winter 2018-2019 New Mexico Jewish Historical Society *Legacy Newsletter*; "Thanks to my immigrant grandparents, I am a proud American" in the *Kansas City Jewish Chronicle* on July 16, 2018.

• Featured/mentioned in media reports: Featured in a *Las Cruces Bulletin* article on September 14, 2018, "Jewish high holidays coincide with 9/11"; quoted in "Temple Beth-El performance is based on oral histories" in the *Las Cruces Bulletin* on October 5, 2018; photo of clergy-led prayer at the October 27 service following the Tree of Life Synagogue shootings in the *Las Cruces Bulletin* on November 2, 2018; quoted in "Local temples hold memorial services" in the *Las Cruces Sun-News* on October 31, 2018; featured in photo leading music with Chava Mirel at our October 5, 2018 service in the November, 2018 *El Paso Jewish Voice*; featured in "Traditions" article in the *Las Cruces Bulletin* on Friday, October 26, 2018 about the "Memories: A Temple in Las Cruces" performance; featured, along with Rabbi Brett Krichiver (from Indianapolis), in the December 6, 2018 issue of the *Kansas City Jewish Chronicle* in a photo taken during the rabbis' pilgrimage to the border on November 14-15, 2018; article on Chanukah featured in the *Las Cruces Bulletin* on November 30, 2018; included in a photo singing at the December 9, 2018 El Paso community Chanukah Celebration in the January 2019 *El Paso Jewish Voice*; quoted in "King's Vision will persist and prevail" article on the January 20, 2019 MLK Day March in the *Las Cruces Sun-News* on January 21, 2019; appeared in the April 19, 2019 *Las Cruces Bulletin* in a photo of public comment at the April 15, 2019 Las Cruces City Council Meeting; featured in photos in the June 2019 *El Paso Jewish Voice* singing with Julie Silver at Temple on May 15, 2019.

Donations through June 27, 2019**Biblical Garden Fund**

- Howard Dash and Lilly Rawlyk, in memory of Bernard Dash
- David Weiselman, in memory of the Weiselman family who perished in the Holocaust; in memory of his dear parents, Nathan and Leah Weiselman; in memory of Kinou Treiser Weiselman ; in celebration of the Weiselman Family: David, Monika, Nathan, and Lola.

General Operating Fund

- Rachel Glicker Duggins and Sean Duggins, in honor of the birth and naming of Rose Elise Duggins
- Cheryl Marians, in memory of Bob Marians, beloved husband, father and grandfather
- Frima Marquez and Jeffrey Marquez, in memory of their sister/aunt, Blanche Levine
- Bea Klein, in honor of the birth of her new great-grandson, Isaac Cobb, son of John and Ashley Cobb
- Bea Klein, in memory of her cousin, Harlan Capin

Irving Batkin Memorial Scholarship Fund

- Ellen and Alfred Torres, on the birth of new grandson Caleb Oatis on April 10, 2019

Rabbi's Discretionary Fund

- Rita Polsky, in memory of Luba Klaitman
- Rachel Glicker Duggins and Sean Duggins, in honor of the birth and naming of Rose Elise Duggins
- Brenda Parish, in memory of her brother, Jerry Gardner
- Leslie Glater, in memory of Josephine Glater
- David Decker and Cheryl Loudon-Decker, in honor of the second birthday of Zoey Sitcler and Iris Sitcler
- Stacey and Michael Hyman, in memory of Aaron Hyman
- Irv Ross, in memory of Alice Ross

Religious School Fund

- David Decker and Cheryl Loudon-Decker, in memory of Quinn Sitcler

TEMPLE FUNDS

Donations are gratefully accepted for the following:

General Operating Fund—For the day-to-day operation of TBE.

Biblical Garden Fund—To provide the infrastructure for biblical plants and trees, and bricks in the fountain meditation area and on the brick walkway.

Campership Fund—Providing scholarships for Temple students to attend Jewish summer camp programs.

Social Action Fund—For projects that benefit our community and Las Cruces and Southern New Mexico.

Irving Batkin Memorial Scholarship Fund—To broadly support Jewish education, based on merit or need, through participation in the TBE Religious School, camperships, and/or pursuit of Jewish collegiate studies or rabbinical studies.

Frances Williams Library Fund—To provide books and infrastructure for the TBE library.

Rabbi's Discretionary Fund—Rabbi Karol uses the Discretionary Fund to meet a variety of philanthropic requests as well as to supplement TBE programs.

Rabbi Gerald M. Kane Fund—Provides funds to help further adult education and cultural programming at TBE.

Temple Beth-El Religious School Fund—Supports the regular and special programming planned by faculty, students and the Religious School Committee.

Temple Beth-El Youth Fund—Support for Youth activities at TBE.

Periodically the temple may list short-term projects or needs. Contributions that do not specify a project or fund will be added to the General Operating Fund. If you have a question or wish to contribute to a project not listed here, please contact our Temple Beth-El Treasurer, Michael Mandel.

"Have you considered a bequest to Temple Beth-El?"

An important part of our future is represented by bequests made by members.

Thoughtful bequests enable Temple Beth-El to retain a future of Jewish life for generations to come. From funding our Rabbi to scholarships at our religious school, your generous gift maintains our financial health.

A simple codicil can be added to your existing will, if you wish to make a bequest, such as:

"I give and bequest to Temple Beth-El, located in Las Cruces, New Mexico, the sum of \$ _____ [or _____ percentage of my estate as finally determined for federal estate tax purposes]."

A will or codicil should be prepared by an attorney.

Please call the Temple office at (575) 524-3380 to discuss including Temple Beth-El in your estate.



Honor the memory of loved ones with a memorial plaque and mark celebrations and milestones (and also the



memory of friends and family) by adding leaves to our Tree of Life and by adding bricks to our Brick Walkway and Biblical Garden.



JULY 2019 (SIVAN-TAMMUZ 5779)**Yahrzeits-June 30 through
through August 3, 2019**

(Listings include the name of the loved one on the yahrzeit list and the name of the congregant or congregants remembering that loved one—asterisks indicate loved ones remembered with memorial plaques)

Read on Friday, July 5 and Saturday, July 6

Bernard Cutler (Michele Blum)

Barbara Orner (Ralph Orner)

Asher Segen*

Benjamin D Siegel*

Max Taub*

Read on Friday, July 12 and Saturday July 13

Milton Berkson* (Burt Berkson)

Cecile Elfant (Rose Jacobs)

Ruth Frank (Lester Frank)

Jennie Frank*

Henrietta Horowitz (Ellen Torres)

Harold Nachison (Jerry Nachison)

Rachelle Petrowski*

Roslyn Rice*

Sarah Meltzer Smalley* (Alison Mann)

Leo Steinborn* (Jeff Steinborn)

Read on Friday, July 19 and Saturday July 20

Ludwig Paul Bergman (Nancy Bergman)

Raymond Gettleman (Sally Sicherman)

Joseph Okin (Gerie Muchnikoff)

Marcia Rabinovich (David Rabinovich)

Dan Sirot (Anne Weinberg)

Dora Stern*/Shaina Devorah Bat Aaron and Gittel
(Ann Berkson & Arthur Berkson)**Read on Friday, July 26 and Saturday July 27**

Josephine Glater (Leslie Glater)

Kathryn Goldstein (Wendee G Lorbeer)

Diane Gutman (Allen Palanker)

Arnold Heart (Nancy Bergman)

Gertrude Kalmanowitz (Sally Sicherman)

Jacob Krasner* (Frima Marquez and Jeffrey
Marquez)

Natalie E. Libby (Bob Libby)

Dorothy Whitledge (Dee Cook)

**Read on Friday, August 2
and Saturday August 3**

Lakie bat Aaron and Katya (Ann Berkson)

Anne H Bergman* (Nancy Bergman)

Manny Blumkin*

Joseph Rosenfeld*

Shana Sicherman (Sally Sicherman)

Jean Weinberg (Anne Weinberg)

David Williamson (Barbara Mandel)

Burton Zuckerman*

**The Temple Beth-El community
extends condolences to:**


- ***Bea Klein, on the death of her cousin, Harlan Capin, in May 2019 in Tucson, Arizona.***
- ***Cindie Shonk, on the death of her mother, Wilba Duggan, in Las Cruces, New Mexico on June 13, 2019.***

May their memories be for blessing.

In order to ensure that the name of your loved one will be recited during services, we have instituted the following practices:

- The Hebrew dates for each week's Yahrzeits are listed in each Newsletter.
- Names are read on the Shabbat **following** the Yahrzeit, or on the day, if it falls on that Shabbat.
- Hebrew vs. conventional (Gregorian) calendar: The temple's tradition is to base the Yahrzeits list on the Hebrew calendar. Those who wish to have a name read on a Friday night close to the conventional (Gregorian) calendar date are asked to please email or call the Temple office a few days prior to the service.

*Asterisks at left indicate that a loved one has been permanently memorialized with a plaque in the Temple sanctuary. If you are interested in acquiring a plaque for your loved one, contact the Temple office.



Temple Beth-El is part of Amazon Smile, which offers members of Temple Beth-El an opportunity to participate in Smile Amazon and donates 0.05% of all purchases back to the Temple. The process is very simple – go to www.smile.amazon.com. You will be required to enter the charity you wish to donate to – just type in Temple Beth-El, Las Cruces in the charity box and this will set the Temple as your charity of choice. Then just shop – pretty easy and also, since many people today shop online via Amazon, it becomes a win-win situation for all.

Visit the Temple Beth-El Website—www.tbclc.org
for in-depth information about Temple and its program-
ming and updates on current Temple events



Temple Beth-El is on Facebook!

<http://www.facebook.com/pages/Temple-Beth-El/115816285166004>

(It is open for all to see!)

If you are on Facebook already,
find our page, click “Like” and
join us in our Facebook community!



COPIERS, PRINTERS, FAX



OFFICE SYSTEMS INC.
The Future of Office Technology



PTS Office Systems, Inc.
2840 N. Telshor
Las Cruces, NM 88011
575.524.4384
575.524.9818 FAX
www.ptsofficesystems.com

Kevin Horner
khorne@ptsofficesystems.com

VISITING CONGREGANTS WHO ARE ILL OR HOME-BOUND

At Temple Beth-El, we depend on you, our members, to inform us if you know of someone who needs a visit, especially if they are in a hospital or a rehabilitation or assisted living facility, and also if they are not able to leave their homes due to health-related issues. In order for us to keep our list of who needs a visit current, we ask you to call or email Rabbi Karol (rabbik@tbclc.org) with the names of congregants who you know would like to be visited. We appreciate your cooperation in this area, so that we can be, as much as possible, a truly caring community.

Adelante Deadline

The deadline for turning in articles, items and photos for the August 2019 Adelante is July 20, 2019. Please do your best to keep to that schedule to facilitate a timely completion of the Adelante!

Office Hours

On weekdays, Rabbi Karol is in the office every day except for Thursday. Times vary, but you can mostly count on finding Rabbi Karol in the office on Mondays and Tuesdays at 10:00-11:30 am (and Fridays while he is preparing for Shabbat worship) and on Wednesdays at 11:30am-12:30 pm. Ruth Rubin is volunteering in the office on Wednesdays at 10:00-10:30 am. Please call before you come (575-524-3380), or email Rabbi Karol at rabbik@tbclc.org or rabbikpkarol@gmail.com. You can also contact Rabbi Karol to make an appointment. Thank you!



Tanah Hemingway

(575) 524-4329

most nights

P.O Box 16318

Las Cruces

NM 88004

Editing:

Books, scientific papers, theses, dissertations

Technical documents of all sorts.

(for accuracy, continuity, organization, style
grammar, readability, supportability, etc.)


Tzedakah Opportunities at TBE

Giving to Casa de Peregrinos & El Caldito

Here are longer lists for items needed!

For Casa de Peregrinos: Peanut Butter and the following
Canned foods: Corn, Green Beans, Mixed Vegetables,
Fruits, Tomatoes, Pasta Sauce, Tuna, Beans, and Meats
For El Caldito: Spices, Regular Mayonnaise, Beans, Beef
and Chicken Soup Stock

Casa de Peregrinos provides staple foods to the needy, and El Caldito provides a hot meal 365 days a year to the hungry in our community. Both organizations are part of the Community of Hope located on the same campus at 999 W. Amador. There are common interests and goals and the food received is often shared between the two organizations in order to best utilize both perishable and non-perishable foods. Please bring something for one or both of these organizations and put your donation in the marked containers in the hallway opposite the Library. **There is also a need for wide-mouth glass bottles and containers.** For more information or questions, contact the Temple office.



JULY 2019

Sun	Mon	Tue	Wed	Thu	Fri	Sat
	Sivan 28 1 Psalm Study 7pm	Sivan 29 2	Sivan 30 3 Wednesday Breakfast 8:45 am Tanakh Study 10:15 am	Tammuz 1 4	Tammuz 2 5 Shabbat Service Led by Erich Zamerret and Ruth Rubin 7:00 pm	Tammuz 3 6 Talmud Study 9:00 am Shabbat Morning Service led by Stuart Kelter 10:15 am
Tammuz 4 7	Tammuz 5 8	Tammuz 6 9	Tammuz 7 10 Wednesday Breakfast 8:45 am	Tammuz 8 11	Tammuz 9 12 Shabbat Service 7:00 pm	Tammuz 10 13 Talmud Study 9:00 am Shabbat Morning Service 10:15 am
Tammuz 11 14 SUMMER MATINEE SING-ALONG and Ice Cream Bar 3:00 pm	Tammuz 12 15 Psalm Study 7pm	Tammuz 13 16	Tammuz 14 17 Wednesday Breakfast 8:45 am	Tammuz 15 18 Board Meeting 7:00 pm	Tammuz 16 19 Shabbat Service 7:00 pm	Tammuz 17 20 Talmud Study 9:00 am Shabbat Morning Service 10:15 am
Tammuz 18 21	Tammuz 19 22 Psalm Study 7pm	Tammuz 20 23	Tammuz 21 24 Wednesday Breakfast 8:45 am Tanakh Study 10:15 am	Tammuz 22 25	Tammuz 23 26 Shabbat Service 7:00 pm	Tammuz 24 27 Talmud Study 9:00 am Shabbat Morning Service 10:15 am
Tammuz 25 28	Tammuz 26 29	Tammuz 27 30	Tammuz 28 31 Wednesday Breakfast 8:45 am	Tammuz 29 Aug. 1	Av 1 Aug. 2 Shabbat Family Ser- vice 6:00 pm Dairy/Vegetarian Potluck Dinner following	Av 2 Aug. 3 Talmud Study 9:00 am Shabbat Morning Service 10:15 am

3980 Sonoma Springs Avenue
Las Cruces, NM 88011
Office Hours:
Monday-Friday, 9:30am--1:30pm
and by appointment

Phone: 575.524.3380
Fax: 575.521.8111

President: Cheryl Decker

Rabbi Lawrence P. Karol
rabbi@tbelc.org

The Temple Beth-El Newsletter is produced regularly at Las Cruces, New Mexico. Editor: Rabbi Lawrence P. Karol . Copy Editors: James Rosenthal, Tanah Hemingway. Circulation: Rabbi Karol and Rose Jacobs. We welcome Adelante sponsorships by or for Temple members and non-members. Sponsorships can be mailed to the Temple; receipts are provided upon request. We reserve the right to edit all sponsorships. Non-member sponsorships (with no ad) are \$25/year. Annual sponsorship rates are as follows: 2x3 business card \$150; Quarter page \$300; Half page \$600. For information about sponsorships, please contact the Temple Office.

**Temple Beth-El and “Adelante” are on the web at
www.tbelc.org**

July, 2019



**Temple Beth-El
3980 Sonoma Springs Avenue
Las Cruces, NM 88011**