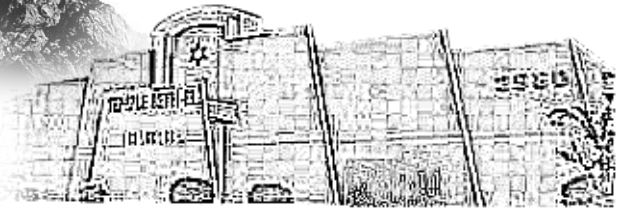




A Monthly Publication for Temple Beth-El,
Las Cruces, New Mexico



MAY 2020 (IYAR-SIVAN 5780)

PLEASE JOIN US!

**FRIDAY NIGHT SHABBAT SERVICE AT
6:30 PM WEEKLY**

You can watch the Facebook livestream on this page:

<https://www.facebook.com/pages/category/Synagogue/Temple-Beth-El-115816285166004/>

(if you do not have a Facebook profile now, and it asks you to join when you go to the page, click "Not Now" and that box will disappear).

Follow along in the Mishkan T'filah for Shabbat flipbook provided by the Central Conference of American Rabbis at this link

<https://www.ccarnet.org/publications/mishkan-tfilah-for-shabbat/>

Otherwise, just listen to the livestream with familiar prayers/songs.

TORAH STUDY-Saturdays, 11AM via Zoom
TALMUD STUDY- Saturdays 9AM via Zoom
(Contact Bryan McCuller
bmcculle@nmsu.edu)

TANAKH STUDY- Wednesdays at 10am via Zoom

SHABBAT MORNING BLESSINGS AND SONGS- May 9, 16, and 23 at 10:30 am via Facebook Live

SHORT STORY SERIES- Details on page 8

ADULT BAR MITZVAH-Saturday May 2

EREV SHAVUOT STUDY AND SONG- Thursday, May 28, 7:30 pm via zoom

SHAVUOT 2nd EVENING SERVICE-

Friday, May 29, 6:30 pm on Facebook live

SHAVUOT 2nd MORNING SERVICE/ YIZKOR- Saturday, May 30- 10:30 am on Facebook live

Link to meetings and text will be sent out prior to sessions.

Adult Bar/Bat Mitzvah
Saturday, May 2
10:30 am.

Join in via Facebook Live as Luke Duddridge, Steve Haydu, Cherri Hudson-Brown, and Patrick Quinn reaffirm their Jewish identity through their participation in this service and presenting personal Divrei Torah.



Annual Congregational Meeting
May 14 @7PM via Zoom



Members must have paid dues in order to vote.
Agenda was sent by mail.

Please contact Bob Kimball 575-520-2902 if you need any help setting up Zoom



Rabbi's Message: **Express Yourself and** **Share It!**

Some of what I have written over the last few weeks has not been shared in Temple emails. Creativity, in any situation, is something over

which we always have a measure of control.

Find your outlet over these days. Ponder, wonder, express yourself in some way, put down your own words or fashion something tangible. And whatever it is, share it, because that is how we build community. Here are some of my expressions for the month of April.

Written For the Temple Beth-El Las Cruces Family Service on April 3, 2020

This is a time to breathe. This is a time to pray.

This is a time to love. This is a time to heal.

This is a time to connect with each other

and to reach for one another,

So that, even when our hands cannot touch,

our hearts will draw close.

This is a time to be kind, to act with goodness,

to recognize our blessings,

and to allow the hope inside of us

to burst forth as light

for our souls and for our community.

Be with us, God, and always bring us together.

Five promises: Passover 5780 - written for the Temple Beth-El Second Night Passover Seder on April 9, 2020 (after I took part in Alden Solovy's "Your Passover Prayer" workshop on April 1).

And God promised the people again,

Safe in their homes during this challenging and precarious time, "I am the Eternal One.

You have gathered for many years to seek My presence.

Now, I am, as I have always been, with you.

I will create connections between you even though you may feel isolated. You are not alone.

I will grant you a sense of freedom and openness in your places of refuge and safety. What you have will be not only enough, but more than enough.

I will liberate your souls with ingenuity and creativity so that light will dwell inside you and around you.

I will link every home, one to another, so that a virtual BEIT K'NESSET, a House of Gathering, will encompass all of you. I will be at your side as you move through this passage to a promised land of hope.

And I will accompany you to a place of health and love. I, the Eternal One."

Invocation for Temple Board Meeting April 16, 2020

God of Deliverance, Source of healing,

Our Guide and Companion,

Walk with us as we gradually cross a new sea.

The waters are slowly splitting,

And we continue to proceed with caution.

May we learn from our history

From the Israelites in ancient times

To Jews throughout the ages

Who have found solace in their homes

Making each of their dwelling places

A small sanctuary, a Mikdash m'at,

even when there were forces at work

In the countries where they lived

To deny them their freedom, their rights

And their very lives.

Help us to appreciate the gifts that we have been given that can sustain us in narrow straits and difficult moments.

As we count the days between Passover and Shavuot, may

we count the blessings we enjoy

That keep us connected to one another

Even at a time such as this.

May we tread carefully in the days to come

Based on wisdom and accurate information

Provided by professionals truly in the know

Who possess Your special gift of knowledge.

Help us preserve our community through these challenging days with a sense of caring, compassion, and hope.

Prayer for the new month of Iyar - written for the Shabbat Service for the Renewal of Spirit, April 24, 2020

The new month of Iyar begins tonight. We have moved through Adar and Nisan, beginning with the joy of celebrating Purim in public, moving to a period of adapting to staying at home, and, then, finding ways to still celebrate deliverance and freedom at Passover. No matter what the obstacles may be, we seem to find modes of establishing community with one another. May this new month remind us that progress and healing are possible, that the blessings we enjoy should not be overshadowed by the challenges we face, and that the connections between us can yield care, support, love, fellowship, and hope.

*L'shalom,
Rabbi Larry K.*

See rabbilarrykarol.blogspot.com for Rabbi Karol's articles, Divrei Torah and sermons.

MAY 2020 (IYAR-SIVAN 5780)**Yahrzeits- for May 2020**

(Listings include the name of the loved one on the yahrzeit list and the name of the congregant or congregants remembering that loved one)

Read on Friday, May 1

Joseph H Bell (Joseph Bell)

Harry Berkove*

Saul Blum (Allen Blum)

Shirley Greenberg (Cyrille S. Kane)

Max Greenfield*

Jesse Horwitz (Ellen Torres)

Morris Leibson*

Abraham Pomerantz/Avraham ben Shmuel v'Rivkah* (Harry and Diane Bass)

Rebecca Pomerantz* (Harry and Diane Bass)

Irving Rubinstein*

Sadie Sugarman (Barney Sugarman)

I.A. Wechter*

Read on Friday, May 8

Hilda Berkeley (Arthur Berkeley)

Hilda Deutschman (Ellen Torres)

Lily Edwards* (Peter Edwards)

Tamara Entin (Maxine Webber, Jason Rosenberg)

Ruth Karol (Rabbi Larry Karol)

Stanley Kasten*

Jack Kelter* (Stuart Kelter, Susan Lapid)

Dora Kirschner (Bob Kirschner)

Lew Kruger (Linda M. Kruger)

Bessie Rothschild*

Milton Silverman*

Fanny Strauss*

Zvi Zeitlin (Leora Zeitlin)

Read on Friday, May 15

Irving Benowitz* (Simy Allan)

Rae Dorfman*

Jerome Herman (Avis Herman Lewis)

Mark Herman (Avis Herman Lewis)

Irving Kallman*

Harold Kane (Cyrille S. Kane)

Frances Klempner (Dee Cook)

Blanche Levine (Frima Marquez, Jeffrey P Marquez)

Meyer Lieberman (Michael Lieberman)

Louis Rashall*

Mollie Segal (Michele Blum)

Nate Wagner*

Read on Friday, May 22

Gertie Davison*

Harold Deutschman (Ellen Torres)

Joel Goldsteen (Rob Goldsteen)

Martin Harris (Nancy Rushforth)

Allan Joseph (Sue Brown, Marieka Brown)

Michael Parkes (Ford Parkes-Perret)

Pauline Rosenberg (Jason Rosenberg)

Alice Ross (Irwin Ross)

David Schwartz*

Hana Segen*

Leland Trafton*

Marianne Zeitlin (Leora Zeitlin)

Read on Friday, May 29

Hilda Bortnick (Allen Palanker)

Nat Dorfman*

Rebekah Klempner Edelstein* (Dee Cook)

Emanuel Gluck*

Simmie Greenfield*

Sidney Kalmanowitz (Sally Sicherman)

Florence Poel (Martin Poel)

Ben Silberman (Cyrille S. Kane)

Eugene J Stern Jr.*

Read on Friday, June 5

Rita Berger (Lila Ziegler)

Wilba Duggan (Cindie Shonk)

Jerry Gardner (Brenda Parish)

Jennie Greenfield*

Rabbi Gerald M. Kane/Harav Yosef Melech ben Hershel Hakohen V'Yocheved (Cyrille S. Kane)

Luba Klaitman (Rita Polsky)

Harriet Mandel (Michael Mandel)

Charlie Roselinsky (Lynn Zeemont)

Shirley Ruttenberg (Ellen Torres)

Irving Schindler (David Zeemont)

Dorothy Schlisman* (Suzanne Mazer)

Leonard Sicherman (Sally Sicherman)

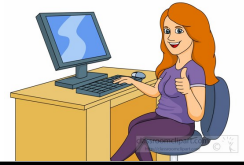
Anna Weinglass (Teddy Weinglass)

In order to ensure that the name of your loved one will be recited during services, we have instituted the following practices:

- The Hebrew dates for each week's Yahrzeits are listed in each Newsletter.
- Names are read on the Shabbat **following** the Yahrzeit, or on the day, if it falls on that Shabbat.
- Hebrew vs. conventional (Gregorian) calendar: The temple's tradition is to base the Yahrzeits list on the Hebrew calendar. Those who wish to have a name read on a Friday night close to the conventional (Gregorian) calendar date are asked to please email or call the Temple office a few days prior to the service.

*Asterisks at left indicate that a loved one has been permanently memorialized with a plaque in the Temple sanctuary. If you are interested in acquiring a plaque for your loved one, contact the Temple office.

Editor's Corner



Hello TBE Friends and Family,

Without the in-person events at the Temple, I find myself with extra space here in the newsletter. So, I will use this page for my general musings and things I would like to share.

First of all, let me say how much I miss all of you. I have missed teaching my Hebrew School boys, Family Services, and special events. I have been joining Morgan on the Hebrew School meetings on Sunday mornings with both Rabbi Larry and Rhonda Karol. Shortly after, I jump back on with Stuart and Leora for prayer leading class. I have learned so much and have really enjoyed the intellectual discourse. The Rabbi has also been part of this group and I am grateful to him for continuing to share his wisdom. I am saddened that this virus has stolen some of the last time we have with him physically as our spiritual advisor. However, he has continued to lead via Zoom, Facebook live, and through posts in e-mail, on the TBE Facebook page (<https://www.facebook.com/Temple-Beth-El-115816285166004/>), blog and his personal page. During this time, he has also written and shared two new songs. I don't know how he has so many more hours in his day than I do.

I have been reconnecting with friends, family and my faith. I do yoga by Facebook Live led by my cousin, and by Temple Beth-El's own yogi, Gillian Baudo (by Zoom, contact her for link). I attended family seders hosted by my sister in Massachusetts and attended by family members in Florida, Maryland and Connecticut.

My phone has been getting much use through phone calls to people all over the country, messaging with people that I have recently found again (including my Kindergarten bestie and neighbor), and watching videos. Some of the more inspiring ones have come from Jewish sources. First, the Jewish Federation of Greater El Paso which posts everything from words of Torah and music from the Israeli Philharmonic, to live PJ library story hour and Pilates. Here are a couple of their links:

Jewishelpaso.org (lots of links to resources)

[Facebook.com/pjlibraryelpaso](https://www.facebook.com/pjlibraryelpaso) (twice a week programming online for kids and their families, especially for young children but also relevant for older children)

I also regularly view content from my old community in Maine, <https://www.facebook.com/MaineJewishLife/> (check out 10 minutes of Torah. Rav. Rachel Isaacs was my Rabbi). Sometimes I also see what is happening with the UJA-Federation of New York. <https://www.facebook.com/ujafedny/>

In case you still need things to do with your time, let me invite you to read a book. I would specifically invite you to read this one:

https://smile.amazon.com/s?k=the+cull+rachel+glickler&ref=nb_sb_noss

"The Cull," written by TBE member Rachel Duggins (she writes under her maiden name, Rachel Glickler). The premise is about a supervirus that sweeps the nation causing infected

individuals to roam the streets mindlessly, infecting others at an alarming rate. I blew through the book in a matter of days and was left feeling that our own virus is thankfully not so horrendous. This was written three years ago and only coincidentally released shortly before Covid-19 hit. Rachel has said that she is featured in a cameo in the book. I have not found her yet. Perhaps you will have better luck. The book is available through Amazon in Kindle format and Paperback. Whichever form you choose, make sure to start at Amazon Smile and make sure that Temple Beth -El, Las Cruces is listed as your charity. It is a simple way of helping the Temple that doesn't cost you a cent more than you were already spending.

Now that you are done with all that, turn off your phone or computer and take your dog for a walk. No dog? Adopt one! It's a great time to do it! (yes, Bella, I see you looking at me with those puppy dog eyes).

L'hitraot,
Beth Tierney

As some of you may know, Gov. Lujan Grisham was asked by the White House and has agreed to have New Mexico participate in a survey of COVID-19 spread.

This is a national study being conducted by Stanford University. This link below has been sent to the Social Action committee, many of whom have already decided to participate.

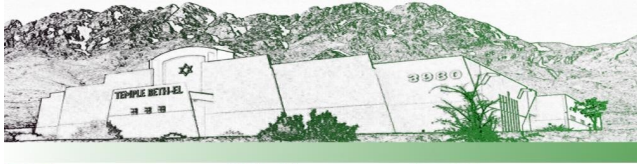
Sending this offer to the entire congregation seemed appropriate and something little and simple that we all could do that might contribute to a larger good. If you decide to participate, you can enroll through the below link and provide about 2-3 minutes of time and some basic information about yourself. Subsequently, each day, the study will send you a link, if you agree, to remind you to answer about 1 minute's worth of questions about how you are feeling.

That's it! It seems to me that this is a very concrete action we can all take to literally help "repair the world."

The link is: <https://med.stanford.edu/covid19/covid-counter.html>.

Just a thought about a small action we might all take in this time of waiting...

Ned Rubin



Transition Times

TRANSITION TIMES #6:

OUR STUDENT RABBI, SOFIA ZWAY

Dear Friends,

I am happy to let you know that Sofia Zway will be serving Temple Beth-El as our Student Rabbi in 2020-2021. Sofia will be with us for the High Holy Days and for 18 weekend visits between August and May. Sofia is from South Africa and will be entering her fourth year of Rabbinical School at Hebrew Union College in the fall. This year she is interning as a spiritual counselor at Beit Tshuvah, a rehabilitation facility in Los Angeles serving both Jewish and non-Jewish clients.

I spoke with Sofia and she looks forward to working with us. Sofia has a strong singing voice and readily connects to prayer through music. Another interest is offering a class to post B'nai Mitzvah students on leadership and Jewish ethical values. Leora Zeitlin and Stewart Kelter will serve as her Lay Advisors.

Rose Jacobs has graciously offered to open her home when Sofia is in Las Cruces. We will have a welcoming gathering during her first visit in August at TBE, and we hope that different members of our community will host Sofia for dinner during her visits.

Rabbi Dvora Weisberg, Director of the School of Rabbinical Studies said this about Sofia's placement at TBE, "This is a very difficult time for everyone, a time of great anxiety and uncertainty about the future. It is a particularly challenging time to go through a rabbinic transition. I am pleased that HUC is able to send you an experienced and sensitive individual to serve your congregation during the coming year."

Sofia will begin to introduce herself in the Adelante. You can learn more about her by googling 'Sofia Zway South Africa' which will take you to an article about her (Boldly going where no Temple Israel woman has gone before...).

Shabbat Shalom,
Joanne Turnbull
Board Vice President & Transition Chair



Message From Temple President Cheryl Decker:

Temple Beth-El is almost two months into our voluntary self-confinement. We all understand that this is the best safeguard we have at this time and that we are responsible for the health not only for ourselves and family but our friends, neighbors and the strangers we come in contact with at the grocery store. As of today, I have not been notified that any temple member or any of their family members have contracted the Covid-19 virus.

The Mitzvah Team and Executive Board have undertaken calling members of our congregation. We asked if you had any immediate needs, food, transportation etc. or if you needed a buddy to simply call you every week or every few days. It is a means to stay in touch and reassure our members that we care and that you matter. If by chance we missed someone, please give me or a member of the Mitzvah Team a call.

Temple has been contacted by a caring, generous member with an offer of financial aid to TBE members. This member will assist members of temple that are experiencing financial distress due to this pandemic. If you are or know of a member who needs help, please give me a call at 575-640-9559. Please reach out to me if you need assistance or just want to talk.

The Annual Meeting will be held on May 14th. This will be a Zoom meeting. If you do not have zoom on your home computer, please install it so you can participate. We have members of our Technology Team who are willing to walk you through the process. I have reached out to Bob Kimball and he has graciously offered his assistance. Call him at 575-520-2902. More information regarding the Annual Meeting will be released soon.

As most of you know, Rabbi Karol has been offering Friday evening Shabbat services live via Facebook. Rabbi also livestreams on Saturday mornings. There are other online groups you can join; watch your email for information on how to keep connected to TBE.

Wishing you wellness and peace. Please keep in touch with your friends, neighbors and other temple members. We all need that human touch no matter if it comes through Facebook, Zoom, FaceTime or a phone call.

L'shalom,

Cheryl

Temple Beth-El Board of Trustees April 16, 2020 Meeting Summary

- Rabbi Karol updated the board on his activities this past month. He is doing Friday night services each week and Blessings and Songs on Saturday mornings using Facebook Live, and Torah study on Saturday mornings and Tanakh Study on Wednesday mornings using Zoom. He continues to attend meetings (online) and webinars about connecting with and supporting the congregation during this time.
- The treasurer reports that our balance is currently approximately \$39K and we are applying for a small business loan under the Covid-19 provision for small business to cover employee costs.
- The Nominating committee presented their board nominations. We have two openings, with Ruth Rubin and Luke Duddridge stepping down from the board and 4 board members whose terms are coming to an end and would like to continue serving on the board. The full slate of nominees includes, Cheryl Decker, Joanne Turnbull, Michael Mandel, Pearie Bruder, Marieka Brown, and Bryan McCuller.
- The agenda for our Annual Congregational Meeting was presented, and it was agreed that we could run the meeting virtually using the Zoom application. The Board decided to move the date of the Congregational Meeting from the 7th to the 14th of May, to allow time to prepare under these novel conditions.
- The Temple needs a new membership chair, or co-chairs. It was suggested that we bring this up at the annual meeting.
- Joanne Turnbull spoke with our new student rabbi, Sofia Zway. More information will be presented at the annual meeting and will go out with the annual booklet. Leora and Stuart will be her congregation lay advisors.
- The next step toward bringing the student rabbi on board is mapping out her initial schedule, which will be done with the religious practices team.
- A mailing will go out soon inviting congregation members to the Annual Meeting on May 14th, 2020 at 7:00 PM, which will be held virtually using the Zoom meeting platform. Members must be paid up to be able to vote at the annual meeting.



Dear Temple Beth-El,

I am delighted and excited to be joining you in the fall as your student rabbi. I am currently finishing up my third year of Rabbinical school at HUC-JIR's Los Angeles Campus. I completed my second year at the college's New York Campus, but after a year of long-distance with my partner, Brett Kopin, Los Angeles felt like a great move! Brett, also a rabbinical student; is in his fourth year at the Ziegler School of Rabbinical Studies, the Conservative Movement's Los Angeles campus, and equally excited to be joining us in Las Cruces occasionally during the next year.

A little bit more about me: I was born in Ecuador to two South African parents, but spent most of my life in South Africa, where I obtained an Honours Degree in Applied Drama and Theatre from the University of Cape Town. Before coming to Rabbinical school, I worked as the Rabbinic Intern at Temple Israel in Cape Town, where I also led High Holy Day services last year. Throughout my high school and university years, I was a madricha in Netzer South Africa, the Reform Zionist Youth Movement (equivalent to NFTY). I spent my gap year studying and volunteering in Israel on Shnat Netzer, the youth movement's flagship 10 month leadership programme. In 2013, I volunteered as the National Chairperson and head of camp for Netzer South Africa. I have also been an avid participant and volunteer at Limmud South Africa. I am currently interning as a spiritual counsellor at Beit T'shuvah, a residential addiction treatment centre and congregation in Los Angeles. I hope to train as a doula in the next couple of years and to incorporate birth work into my rabbinate. I look forward to continuing my rabbinic journey with you all, please God, in August.

With blessings for health and peace,
Sofia Zway

In the weeks leading up to the Adult Bar/Bat Mitzvah Ceremony on May 2, I invited our B'nei Mitzvah to tell us a little bit about themselves and the importance of this step to them. Below are the words of the three who wished to share. I am awed by all of their journeys and thrilled to celebrate with them.

Cherri Hudson– Brown

I grew up in the Congregational Church in a small town in the Midwest, but my parents wanted my brother and me to appreciate there was a bigger world. One thing my mom did was to teach me about the major religions. When I was probably 10 years old we went to a reception honoring my grandfather's best friend's father who was turning 100. It was held in a synagogue social hall. I wrote a paper about Jewish holidays when I was in 7th or 8th grade.

In college, I mostly dated Jewish guys. A few years after graduating I met Jeff Brown when we both were working for the University of Northern Iowa. There was only one synagogue in a nearby town and we both took an Introduction to Judaism class with a Conservative rabbi.

Jeff and I were married almost 38 years ago. We lived in the Chicago suburbs for two years, then moved to Las Cruces in 1984. Over the years I've been a religious school teacher, religious school principal for a year and served two terms on the Temple Beth-El board. I was even president of the Las Cruces chapter of Hadassah. For several years I was less active in the temple, but at the age of 67 I'm ready to re-dedicate myself as a Daughter of the Commandments.

Steve Haydu

Why an Adult Bar Mitzvah Ceremony?

I am grateful to have this opportunity to formalize my ties to the Jewish community. My lineage is mixed, and I was not raised in a Jewish household. My parents immigrated to the United States in 1956, from Hungary, and decided to give me a Christian upbringing. As I grew older, I found that Judaism is where my heart lay. I grew up reading Elie Wiesel, Leon Uris, and Chaim Potok. In high school, a friend taught me to decode Hebrew, and eventually I became involved with the temple my cousins went to. In spite of my love of Judaism, there were some parts of me that seemed irreconcilable with Judaism as I then understood it, so I distanced myself. Celebrating my bar mitzvah now, at Temple Beth-El (in spirit anyway), with a knowledgeable and caring rabbi, and our congregation, is very much like coming home after a long journey.

Patrick Quinn

I am preparing this biographical note on March 17, a week into my wife Susan's and my having become voluntary hermits to avoid catching Covid-19. As I write, "Alexa" is playing jaunty Irish Pub Music which is helping me get over my funk at our most recent virus-related "deprivation" -- canceling our annual St. Patrick's Day celebration with our dear "Irish-Jewish" friends from TBE.

We joined TBELC in the fall of 2008 after retiring from long careers with the Federal Government in Washington, D.C. (Me: CIA. She: Bethesda Naval Hospital.)

We have had a Jewish home since we were married by a Reform Rabbi just before Shavuot in 1977. I was given my Jewish name, Avinadav, by the Conservative Rabbi who conducted our daughter Abigail's naming ceremony just after Shavuot 1984. But, I did not convert to Judaism until Shavuot 1993 when we were members of Adat Shalom Reconstructionist Congregation in Bethesda, Maryland.

I was required to learn basic Hebrew so that I could be called to the Torah at the conversion ceremony. So, I technically had my Adult Bar Mitzvah then. The celebration at TBELC on May 2 will actually be my Jewish confirmation. I joined the Adult BBM class hoping that I might, at long last, learn to read from the Torah. (Spoiler Alert: It will happen, but has been challenging!)

יום האם שמח!
Happy Mother's Day!

Wishing a joyous day to all the wonderful mothers in our congregation!



TBE Community,

In the best interest of our members and friends, and in part of the effort to slow the spread of the coronavirus, all services and events will be conducted virtually.

Please know that the MITZVAH TEAM is available during this difficult time. Please contact members of the team if you would like to request assistance.

Contact:

David Decker:

575-556-4056, "deckerdavid28@gmail.com"

Alison Mann:

575-680-0207, "Alisonmd4@gmail.com"

Luke Duddridge:

727-204-6086,

"LCDuddridge@hotmail.com"

We wish for all of you health, safety, connection and hope at this time.



"Virtual" Short Story Series Continues

During these challenging times, you are invited to join us for our ongoing "virtual" Jewish short story discussion series. We meet via Zoom. We have three separate discussion groups currently meeting

Mondays and Tuesdays at 11 a.m.

We are reading the short stories of two Jewish authors - the late Grace Paley, one of America's most famous fiction writers, and Etgar Keret, a popular young Israeli author. Many of these two authors' short stories are available on-line. So, there is no need for you to purchase a book. I send the assigned stories via email directly to you.

If spending an hour or so with fellow readers each week sounds like something you would like to do, just let me know at jar529@gmail.com.

Questions? Call me at 640-3292.

Hope to hear from you.—Jim Rosenthal

BOARD OF TRUSTEES 2019-2020

President-Cheryl Decker

Vice-President-Joanne Turnbull

Secretary- Steve Haydu

Treasurer- Michael Mandel

Barbara Berger Pearie Bruder Luke Duddridge

Martha Roditti Nan Rubin

Ruth Rubin Lynn Zeemont

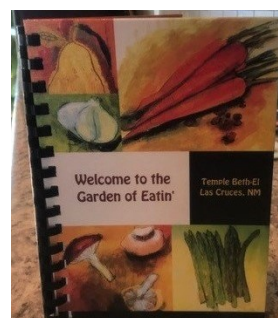
Jeff Lewis (Mensch Club) Dee Cook (Sisterhood)

Rabbi Lawrence P. Karol

The Annual Congregational Meeting will be held via Zoom on Thursday, May 14 at 7. There will be no Board meeting this month.

Temple Beth-El Cookbook "Welcome to the Garden of Eatin'"

\$15, Cash or Check



**Contact Rose Jacobs for copies
arejay11@icloud.com or
512 680-2783**



**Thank you to everyone from near
and far who participated in the
TBE virtual Seder via Zoom
on April 9, 2020.
Next Year in Person!**

**Visit the Temple Beth-El Website—www.tbcl.org
for in-depth information about Temple and its programming and updates on current Temple events**

Temple Beth-El is on Facebook!

<http://www.facebook.com/pages/Temple-Beth-El/115816285166004>

(It is open for all to see!)

If you are on Facebook already, find our page, click “Like” and join us in our Facebook community!



Temple Beth-El is part of

Amazon Smile, which offers members of Temple Beth-El an opportunity to participate in Smile Amazon and donates 0.05% of all purchases back to the Temple. The process is very simple – go to www.smile.amazon.com. You will be required to enter the charity you wish to donate to – just type “Temple Beth-El, Las Cruces” in the charity box and this will set the Temple as your charity of choice. Then just shop – pretty easy and also, since many people today shop online via Amazon, it becomes a win-win situation for all.

Tikkun Olam Opportunities —*Giving to and volunteering at Casa de Peregrinos & El Caldito*

Casa de Peregrinos provides staple foods to the needy, and El Caldito provides a meal 365 days a year to the hungry in our community. Both organizations are part of the Community of Hope located on the same campus at 999 W. Amador. Due to the COVID-19 crisis, they have seen a decrease in volunteers and the El Caldito soup kitchen has switched to handing out sack lunches in order to maintain social distancing. There are common interests and goals and the food received is often shared between the two organizations in order to best utilize both perishable and non-perishable foods. **There is also a need for wide-mouth glass bottles and containers and gently used clothing.**

For more information on current needs or questions, contact Casa de Peregrinos and El Caldito directly.

Adelante Submissions:

During this time of social distancing due to COVID-19, let us not become distant from each other. Speak with fellow congregants, friends and family. Send me your pictures of family Shabbat, musings, illustrations, etc. I will share as many as space allows in next month's Adelante.

The deadline for turning in articles, items and photos for the June 2020 Adelante is May 20, 2020.

Please do your best to keep to that schedule to facilitate a timely completion of the Adelante!

All content can be e-mailed to Beth Tierney at cambrien73@gmail.com

KYOCERA COPIERS, PRINTERS, FAX

PTS OFFICE SYSTEMS INC.
The Future of Office Technology

PTS Office Systems, Inc.
2840 N. Telshor
Las Cruces, NM 88011
575.524.4384
575.524.9818 FAX
www.ptsofficesystems.com

Kevin Horner
khorne@ptsofficesystems.com

Brunder
real estate team

Ron Bruder
ASSOCIATE BROKER
ronbruder@topproducer.com
Cell: 575-312-7330
Office: 575-522-3698

Steinborn & Associates
Real Estate



Tanah Hemingway

(575) 524-4329
most nights
P.O Box 16318
Las Cruces
NM 88004

Editing:

Books, scientific papers, theses, dissertations
Technical documents of all sorts.
(for accuracy, continuity, organization, style
grammar, readability, supportability, etc.)

Donations through April 28 2020

Rabbi's Discretionary Fund:

Brenda Parish, in memory of Terry Petty
Sharon and Peter Dorfman, in memory of Howard Lee
Dobres

JR Mora, thank you for online classes

General Operating Fund:

Lila Ziegler

Rebecca Martinez

Joanne Turnbull, in honor of the Mitzvah team and
Mensch Club

Vivian Steinborn, In memory of Paulina Salopek

Temple Beth-El Religious School Fund:

Beth Tierney, in honor of Cherri Hudson-Brown, Luke
Duddridge, Steven Haydu, and Patrick Quinn on
their B'nai Mitzvah

Bryan McCuller, in memory of James McCuller

Social Action Fund:

Sharon and Peter Dorfman, in memory of Norma
Dorfman

Irving Batkin Memorial Scholarship Fund:

Allen Blum, in memory of Blanche Blum and Saul Blum

Temple Beth-El Youth Fund:

Mark and Aggie Saltman, in memory of Byron Saltman

Given changes to the standard deduction limits, we will not be providing 2019 contribution statements for tax purposes. If you would like a statement, please contact the temple treasurer Michael Mandel to request one.

“Have you considered a bequest to Temple Beth-El?”

An important part of our future is represented by bequests made by members.

Thoughtful bequests enable Temple Beth-El to retain a future of Jewish life for generations to come.

From funding our Rabbi to scholarships at our religious school, your generous gift maintains our financial health.

A simple codicil can be added to your existing will, if you wish to make a bequest, such as:

***“I give and bequest to Temple Beth-El, located in Las Cruces, New Mexico, the sum of \$ ____
[or ____ percentage of my estate as finally determined for federal estate tax purposes].***

A will or codicil should be prepared by an attorney. Please call the Temple office at (575) 524-3380 to discuss including Temple Beth-El in your estate.

TEMPLE FUNDS

Donations are gratefully accepted for the following:

General Operating Fund—For the day-to-day operation of TBE.

Biblical Garden Fund—To provide the infrastructure for biblical plants and trees, and bricks in the fountain meditation area and on the brick walkway.

Rabbi Larry and Rhonda Karol Campership Fund—Providing scholarships for Temple students to attend Jewish summer camp programs.

Social Action Fund—For projects that benefit our community and Las Cruces and Southern New Mexico.

Irving Batkin Memorial Scholarship Fund—To broadly support Jewish education, based on merit or need, through participation in the TBE Religious School, camperships, and/or pursuit of Jewish collegiate studies or rabbinical studies.

Frances Williams Library Fund—To provide books and infrastructure for the TBE library.

Rabbi's Discretionary Fund—Rabbi Karol uses the Discretionary Fund to meet a variety of philanthropic requests as well as to supplement TBE programs.

Rabbi Gerald M. Kane Fund—Provides funds to help further adult education and cultural programming at TBE.

Temple Beth-El Religious School Fund—Supports the regular and special programming planned by faculty, students and the Religious School Committee.

Temple Beth-El Youth Fund—Support for Youth activities at TBE.

Donations may be made by mail, directly at the Temple, or by PayPal from the TBE website. Periodically the temple may list short-term projects or needs. Contributions that do not specify a project or fund will be added to the General Operating Fund. If you have a question or wish to contribute to a project not listed here, please contact our Temple Beth-El Treasurer, Michael Mandel.

MAY 2020

Sun	Mon	Tue	Wed	Thu	Fri	Sat
					Iyar 7 1 Shabbat Services 6:30 PM via Facebook Live	Iyar 8 2 Talmud Study 9 AM via Zoom Adult Bar/ Bat Mitzvah 10:30 AM via Facebook Live
Iyar 9 3 Religious School—Last Day 10 AM via Zoom	Iyar 10 4 Short Story Group 11AM via Zoom	Iyar 11 5 Short Story Group 11AM via Zoom	Iyar 12 6 Tanakh Study 10AM via Zoom	Iyar 13 7	Iyar 14 8 Shabbat Services 6:30 PM via Facebook Live	Iyar 15 9 Talmud Study 9AM via Zoom Blessings & Songs 10:30 AM via Facebook Live Torah Study 11 AM via Zoom
Iyar 16 10 <i>Mother's Day</i>	Iyar 17 11 Short Story Group 11AM via Zoom	Iyar 18 12 Short Story Group 11AM via Zoom <i>Lag B'Omer</i>	Iyar 19 13 Tanakh Study 10AM via Zoom	Iyar 20 14 Annual Congregational Mtg. 7 PM via Zoom	Iyar 21 15 Shabbat Services 6:30 PM via Facebook Live	Iyar 22 16 Talmud Study 9AM via Zoom Blessings & Songs 10:30 AM via Facebook Live Torah Study 11 AM via Zoom
Iyar 23 17	Iyar 24 18 Short Story Group 11AM via Zoom	Iyar 25 19 Short Story Group 11AM via Zoom	Iyar 26 20 Tanakh Study 10AM via Zoom	Iyar 27 21	Iyar 28 22 Shabbat Services 6:30 PM via Facebook Live	Iyar 29 23 Talmud Study 9AM via Zoom Blessings & Songs 10:30 AM via Facebook Live Torah Study 11 AM via Zoom
Sivan 1 24	Sivan 2 25 Short Story Group 11AM via Zoom <i>Memorial Day</i>	Sivan 3 26 Short Story Group 11AM via Zoom	Sivan 4 27 Tanakh Study 10AM via Zoom	Sivan 5 28 Erev Shavuot study and songs 7:30 PM via Zoom	Sivan 6 29 Shavuot 2nd Evening Service 6:30 PM via Facebook live	Sivan 7 30 Talmud Study 9AM via Zoom Shavuot 2nd Morning Service/ Yizkor via Facebook live 10:30 AM NO TORAH STUDY
Sivan 8 31						

3980 Sonoma Springs Avenue
Las Cruces, NM 88011

Phone: 575.524.3380
Fax: 575.521.8111

President: Cheryl Decker

Rabbi Lawrence P. Karol
rabbi@tbelc.org

The Temple Beth-El Newsletter is produced regularly at Las Cruces, New Mexico. Editor: Beth Tierney. Advisor to the Editor: Rabbi Larry Karol. Copy Editors: James Rosenthal, Tanah Hemingway. Circulation: Rabbi Karol and Cheryl Decker. We welcome Adelante sponsorships by or for Temple members and non-members. Sponsorships can be mailed to the Temple; receipts are provided upon request. We reserve the right to edit all sponsorships. Non-member sponsorships (with no ad) are \$25/year. Annual sponsorship rates are as follows: 2x3 business card \$150; Quarter page \$300; Half page \$600. For information about sponsorships, please contact the Temple Office.

**Temple Beth-El and “Adelante” are on the web at
www.tbelc.org**

May, 2020



**Temple Beth-El
3980 Sonoma Springs Avenue
Las Cruces, NM 88011**