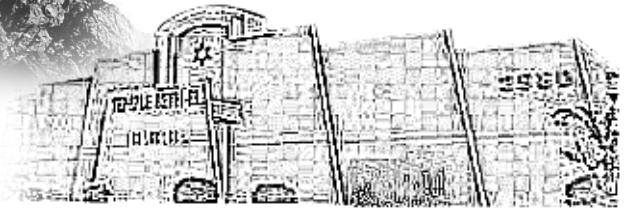


Adelante!

A Monthly Publication for Temple Beth-El,
Las Cruces, New Mexico



AUGUST 2020 (AV-ELUL 5780)

Erev Shabbat Services, Friday, August 14, 2020 With Rabbi Sofia Zway

Virtual Oneg after service. Bring your challah, wine and food to nosh to the screen and stay a while to chat.



The Gift of Challah

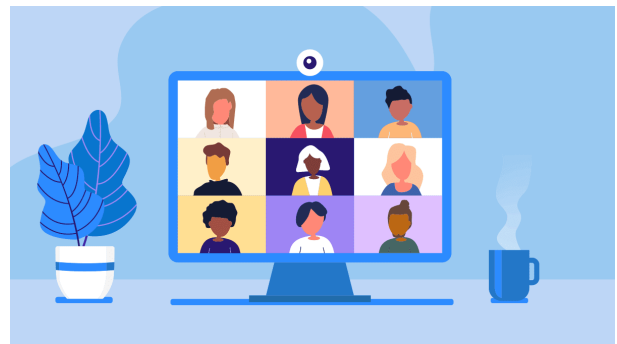
In celebration of Rabbi Sofia's first service, the Board of Trustees, Temple Sisterhood and the Mensch Club are offering a free challah for your Oneg. The challah will be delivered to your home on the 14th by 5:00PM. We have a limit of 100 challah, and please, only one per family. Please contact Sue Mazer, smazer2@gmail.com to reserve your challah.



shutterstock - 164416730

MEET 'N GREET

with Rabbi Sofia Zway



**Sunday, August 9th
5 O'Clock PM via Zoom**

Members can send questions to Joanne Turnbull at turnbulljoanne@gmail.com.

The questions will be forwarded to various leaders (e.g., Religious School, Mitzvah Team, Religious Practices, etc.) who in turn will pose the questions to Sofia.

Please join us and get to know Rabbi Sofia



tradition, tradition, TRADITION!

Change can be one of the most stressful happenings we endure in life. We, the Temple Beth-El community, are in-the-midst of probably one of the most stressful times our congregation has had to deal with. The Covid-19 virus forced us to close our spiritual and gathering home. Learning to deal and live with this virus in our midst has left us sheltering, frightened and emotionally secluded. Thankfully, our Religious Practices team is conducting the Friday evening services by Zoom. They have performed these responsibilities with aplomb and keep us spiritually connected. Thank you for giving your time and talents.

These past few weeks, as we move into the planning phase for the High Holy Days, have been filled with emails full of discussion, concerns, ideas sent back and forth between committees, team members, and those Board members charged with helping facilitate those plans. New Year calendars have been ordered, and Yizkor Books are our latest focus and concern. Typically, the Yizkor books have been available at temple during Yom Kippur services. This year we will be observing the High Holy Days via Zoom. Which leads us to ask, how do we keep this tradition of honoring our deceased loved ones and pray, "Yizkor Elohim"? Ritual and traditions are important to us as Jews, they order our lives especially in times of remembrance. Therefore, the decision has been made to keep this one tradition as it has been for years. TBE will be publishing our traditional Yizkor Books and we will find a way to put them into your hands for Yom Kippur. Rose Jacobs assisted Rabbi Karol with this task the past three years. Rose has graciously agreed to undertake this mitzvah and

this is where we need your help. Soon, the Yizkor forms will be mailed to you. Please, list the names of your loved ones and return the form and your donation ASAP.

On Friday, August 14th, Rabbi Sofia Zway will perform her first Friday Evening Service for our congregation with an interactive Oneg to follow. In celebration of Rabbi Sofia's first service, we have a special Oneg gift for you. The Board of Trustees, Temple Sisterhood and the Mensch Club will be delivering a challah to your home on the 14th by 5:00PM. We have a limit of 100 challah, and please, only one per family. Please contact Sue Mazer, smazer2@gmail.com to reserve your challah delivery. Sue will also be handling the ordering of the round challah for Rosh Hashanah. The price remains the same at \$7.00 each for raisin or plain. That order form will be available soon.

Together, we as the only Reform Temple in Las Cruces will keep our temple inclusive, friendly, responsive to our needs and outreaching to the secular and blended-faith Jewish community in Las Cruces. Our temple still needs your support; spiritually, physically and financially. I have a plaque that reads: "Grow old along with me, the best is yet to be," I believe and I am excited for the future of Temple Beth-El.

L'shalom,

Cheryl, President, Temple Beth-El

Worship Schedule

Friday Night Shabbat Service (6:30 PM Weekly) and Saturday Morning Services (10:15 AM when offered) Via Zoom

You can also watch the Facebook livestream on this page:

<https://www.facebook.com/pages/category/Synagogue/Temple-Beth-El-115816285166004/>

(if you do not have a Facebook profile now, and it asks you to join when you go to the page, click "Not Now" and that box will disappear).

If you do not have a siddur at home, you can follow along in the Mishkan T'filah for Shabbat flipbook provided by the Central Conference of American Rabbis at this link

<https://www.ccarnet.org/publications/mishkan-tfilah-for-shabbat/>

Wednesdays—

Tanakh study 10:00 am with Rabbi (Emeritus) Larry Karol

Zoom invites for Torah Study and Services, as well as any text to follow, will be sent out weekly.

Contact Bryan McCuller to attend Talmud Study (mccullerbryan@gmail.com)

Contact Rabbi Karol (rablpkarol@gmail.com) to attend Tanakh Study

Saturday, August 1

9:00 am Talmud Study

11:00 am Torah Study with Rabbi Larry Karol
Parshat Vaetchanan Deuteronomy 3:23-7:11

Friday, August 7

6:30 pm Family Shabbat Services for all ages—
Lay-Led by Marieka Brown

Saturday, August 8

9:00 am Talmud Study

11:00 am Torah Study with Rabbi Larry Karol
Parashat Ekev Deuteronomy 7:12-11:25

Friday, August 14

6:30 pm Shabbat Service—Led by Rabbi Sofia Zway

Virtual Oneg to follow

Saturday, August 15

9:00 am Talmud Study

10:15 Services Led by Rabbi Sofia Zway

11:15 am Torah Study With Rabbi Sofia Zway
Parashat Re'Eh Deuteronomy 11:26-16:17

Friday, August 21

6:30 pm Shabbat Service Led by Rabbi Sofia Zway

Saturday, August 22

9:00 am Talmud Study

10:15 Services Led by Rabbi Sofia Zway

11:15 am Torah Study With Rabbi Sofia Zway
Parashat Shoftim Deuteronomy 16:18-21:9

Friday, August 29

6:30 pm Shabbat Service - Led by Amalia Zeitlin and BEMY/BETY

Saturday, August 29

9:00 am Talmud Study

11:00 am Torah Study with Rabbi Larry Karol
Parashat Ki Tetze Deuteronomy 21:10-25:19

“Virtual” Short Story Series Continues

During these challenging times, you are invited to join us for our ongoing “virtual” Jewish short story discussion series. We meet via Zoom in two separate sessions on

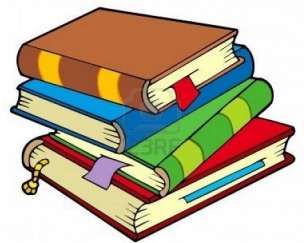
Mondays and Tuesdays at 11 a.m.

We are reading the short stories of many different current and past Jewish authors. Many of these authors' short stories are available on-line. So, there is no need for you to purchase a book. I send the assigned stories via email directly to you.

If spending a friendly and stimulating time with fellow readers each week sounds like something you would like to do, just let me know at jar529@gmail.com.

Questions? Call me at 640-3292.

Hope to hear from you.—Jim Rosenthal





Message from Rabbi Emeritus, Larry Karol:

This is my first Adelante article as Rabbi Emeritus of Temple Beth-El. I am coming to you from the realm of retirement!

During the month of July, I have been preparing the “rabbinic laptop” for its return to the rabbi’s desk. Rhonda and I are packing up my books and files. It is a gargantuan task to “sift” through 39-plus years of resource accumulation, but it will be complete, up to a point, when August arrives, and when my library and files will find a new home.

Throughout July, I have been attending, along with Religious School teachers Beth Tierney and Diane Fleishman, Summer of NewCAJE, an annual Jewish educators conference which is being held online via Zoom this year. I am the co-chair of the Summer of New-CAJE Kumsitz, evening sing-alongs that are being held once a week during the conference. Mainly, the sessions have covered a wide range of topics for personal learning and for support in creating lesson plans and activities for students.

I am honored to continue to lead Tanakh study on Wednesdays (please contact me if you want to join us in our exploration of the prophets) and Shabbat Morning Torah study. It is also gratifying to see the energy and creativity of members being applied to congregational worship and programming.

Rhonda and I are deeply grateful for the expressions of congregants in the special retirement issue of the Adelante, recognizing our years of service to the congregation. We greatly appreciate the brick, honoring our years at Temple Beth-El, which has been added to the Brick Walkway (see the photos next column).

Rhonda and I have both had the opportunity to greet and speak with my future rabbinic colleague, Sofia Zway, who will lead the congregation this coming year. I know that she, Temple leaders, and congregants are looking forward to her time with Temple Beth-El.

This is still a challenging time as we “ride the waves” of the coronavirus pandemic. Stay healthy and safe, everyone, as we continue to make connections that will preserve and enliven the Temple Beth-El community.

***L’shalom,
Rabbi Larry (and, of course, Rhonda!)***

See rabbilarrykarol.blogspot.com for Rabbi Karol’s articles, Divrei Torah and sermons.



Avis & Jeff Lewis, Bob Kimball, Rabbi Emeritus Larry and Rhonda



Bob Kimball placing the brick

celebrating our Simchas

The Temple Beth-El Mitzvah Team sends best wishes to these members celebrating birthdays this month:

Dee Cook

Tom Levy

Liz Olsen

The Temple Beth-El Mitzvah Team sends best wishes to these members celebrating anniversaries this month:

Avis and Jeff Lewis

Karen and Michael Lieberman

If you would like to have us acknowledge your occasion in the future please send birth month, anniversary month, and the year you joined the temple to Luke Duddridge at LCDuddridge@hotmail.com.

If you follow the example below it would be helpful:

Sam Adams Born July, Married
March, Joined 2015

Please note that we are not collecting dates, just the months.

Tikkun Olam Opportunities *Giving to and volunteering at Casa de Peregrinos & El Caldito*

Casa de Peregrinos provides staple foods to the needy, and El Caldito provides a meal 365 days a year to the hungry in our community. Both organizations are part of the Community of Hope located on the same campus at 999 W. Amador. There are common interests and goals and the food received is often shared between the two organizations in order to best utilize both perishable and non-perishable foods. There is also a need for wide-mouth glass bottles and containers and gently used clothing.

This is a critical time for the organizations. Due to the COVID-19 crisis, they have seen an increase in demand. At the same time, they have had a decrease in volunteers, particularly on weekends. In order to maintain social distancing, the El Caldito soup kitchen has switched to handing out meals to go.

For more information on current needs, questions, or to volunteer, contact Casa de Peregrinos (575-523-5542) and El Caldito (575-525-3831) directly.



Transition Times

Transition Times #7

TBE's Three Phases of Transition

Phase 1 of Temple Beth El's Transition ended on June 30th with Rabbi Karol's retirement. Now that we've moved into Phase 2, the leadership is in our hands with services led by members and our first student rabbi. An important part of Phase 2 will be focus groups, which give us the opportunity to discuss TBE's future. These focus groups will be held during Fall 2020. What happens during Phase 3 whether we're able to begin a search for a full or part-time rabbi depends on the temple's financial situation.

Transition Teams: As part of Phase 2, TBE's board has dissolved five Transition Teams, moving them to Committee status:

1. **Adult Education:** This team focused on the Rabbi's reduced time and retirement. The Adult Education/Social Action Committee, chaired by Ned Rubin, is considering several educational initiatives for 2020-2021 and will work with our Student Rabbi, Sofia Zway, on offerings.
2. **Finance:** Lynn Zeemont, the Finance Committee chair, will write an article about TBE's finances for next month's *Adelante*.
3. **Mitzvah Team:** The Mitzvah Committee, chaired by Luke Duddridge, will be an ad hoc committee until the bylaws are revised in 2020-2021.
4. **Religious Practices:** The Religious Practices Committee, chaired by Cherri Hudson-Brown, is hard at work on August's lay-led services and planning for the High Holy Days.
5. **Religious School:** A council of parents is now responsible for leadership of the Religious School. Erich Zamaret, Beth Tierney and Diane Fleishman are teachers for the 2020-2021 school year; Ruth Rubin will offer music and Marlene Benz is serving as part-time administrator. Schedule is still being finalized. Sofia will also be involved with the Religious School.

The remaining Transition Teams are Administration, Communication, Strategy, and Technology. At its July meeting, the Board voted to combine the Communication and Technology teams. This new combined team is exploring a partnership with the Creative Media Technology program at Doña Ana Community College and a work group will redesign the TBE website.

Student Rabbi

- You are invited to a Meet 'n Greet for our new student rabbi, Sofia Zway, on Sunday August 9th at 5:00 PM. We want everyone to have the opportunity to ask Rabbi Sofia whatever they like, but don't want her to feel bombarded, so please send your questions to turnbulljoanne@gmail.com.
- Please join us for Rabbi Sofia's first Erev Shabbat service on Zoom **August 14, 2020, at 6:30 PM**. Have snacks ready for an online Oneg following the service.

AUGUST 2020 (AV-ELUL 5780)**Yahrzeits-July 1, 2020 through August 2, 2020**

(Listings include the name of the loved one on the yahrzeit list and the name of the congregant or congregants remembering that loved one—asterisks indicate loved ones remembered with memorial plaques)

Read on Friday, August 2

Anne H Bergman* (Nancy Bergman)
 Rea Bienstock (Gerie Muchnikoff)
 Marion Deutschman* (Ellen Torres)
 Magda Farkas* (Yosef Lapid)
 Patrick Fitzgerald (Susan Fitzgerald)
 Scott Klein (Son of Sonny and Rosie Klein)
 Jacob Klempner (Dee Cook)
 Charlotte Pollack*
 Leonard Pritikin*
 Dorothy Rashal*
 Ted San Filippo (Philip San Filippo)
 Esther Seidman*
 Meyer Seidman*
 Jean Weinberg (Anne Weinberg)

Read on Friday, August 7

Anne H Bergman* (Nancy Bergman)
 Tillie Brandt (Lila Ziegler)
 Jay Druxman (Sonny Klein)
 Ellie Greenberg (Cyrille S. Kane)
 Cecilia Guller* (Abraham Fiszbein)
 Gloria Hudson (Cherri Hudson-Brown)
 Lillian Krasner* (Frima Marquez, Jeffrey P Marquez)
 Louis Madenberg (Janet Stevens)
 Fred Silverston*
 Rena Taslitt* (Nina Rothman)
 Rose Wechter*

Read on Friday, August 14

Jacob Aboulafia*
 Laurel (Batkin) Cahn*/Leah bat Mina (Mike Batkin)
 Dr. Richard Caplan (Betty Rosse)
 Samuel Davison*
 Thelma F Goldberg (Richard Goldberg)

Morty Horwitz (Ellen Torres)
 Milton Kirschner (Bob Kirschner)
 Gina Libo* (The Feil Family)
 Edward Palanker /Echiel Ben Avram-Lab (Allen Palanker)
 Eva Rayblatt (Rose Jacobs)
 Joseph Rothman (Nina Rothman)
 Mary Shickler*

Read on Friday, August 21

Morris Bernstein (Marvin Bernstein)
 Morton Brandt (Lila Ziegler)
 Mary Jacobs*
 Howard Klein* (Sam Klein)
 Rose Kruger (Linda M. Kruger)
 Ruth Plas (Nancy Bergman)
 Dorothy Quinn (Patrick Quinn)
 Jessie Schindler (David Zeemont)
 Laszlo Szucs*
 Jennie Wagman Freeman (Bernice Langner)

Read on Friday, August 28

Irving Batkin* (Mike Batkin)
 Gail Bergman (Nancy Bergman)
 Sol Brandt (Lila Ziegler)
 Paul Deutschman (Ellen Torres)
 Joseph Epstein (Marlene Benz)
 Bella Goldberg (Cyrille S. Kane)
 Philip Greenberg (Cyrille S. Kane)
 Jane Abrams Hurwitz (Susan Fitzgerald)
 Wolfie Jacobs (Rose Jacobs)
 Abraham Dov Kaplan (Betty Rosse)
 Chia Shayna Kaplan (Betty Rosse)
 Dina Kaplan (Betty Rosse)
 Isser Kaplan (Betty Rosse)
 Maria Kaplan (Betty Rosse)
 Yossel Kaplan (Betty Rosse)
 Rose Lieberman Hodess (Michael Lieberman)
 Samuel Pomerantz*
 Geneva Pritikin*
 Cheryl S. Ryave Radov (Rosalyn Richman, Selma Ryave)
 Samuel Rice*
 Martin Steinman*
 Zarah Williamson (Barbara Mandel)

Continued from Page 7

Read on Friday, September 4

Lulu Dimig (Deborah Levy)

Irv Dworsky*

Millie Greenberg (Cyrille S. Kane)

Eve Holzman*

Ethel Kreps*

Albert Petrowski*

Donald David Stern*

Sidney Waldman*

In order to ensure that the name of your loved one will be recited during services, we have instituted the following practices:

- The Hebrew dates for each week's Yahrzeits are listed in each Adelante.
- Names are read on the Shabbat **following** the Yahrzeit, or on the day, if it falls on that Shabbat.
- Hebrew vs. conventional (Gregorian) calendar: The temple's tradition is to base the Yahrzeits list on the Hebrew calendar. Those who wish to have a name read on a Friday night close to the conventional (Gregorian) calendar date are asked to please email or call the Temple office a few days prior to the service.

*Asterisks indicate that a loved one has been permanently memorialized with a plaque in the Temple sanctuary. If you are interested in acquiring a plaque for your loved one, contact the Temple office.

The Temple Beth-El community
extends condolences to:

The family of Win Jacobs, who passed away on July 14th at her home. A "celebration of life" gathering is scheduled for August 9th at 7:30 PM, at Plaza de Las Cruces. Please plan on bringing your chairs since the seating arrangements will be limited. Masks and social distancing are encouraged for those who attend.

May her memory be for blessing



Honor the memory of loved ones with a memorial plaque and mark celebrations and milestones (and also the memory of friends and family) by adding leaves to our Tree of Life.



**Bricks for the
Biblical Garden and Brick Walkway**

Please consider ordering one to mark that special occasion of your own or a loved one. Call Dee Cook or Alison Mann, and they will send you the form and even help you design the brick, if you wish. And take a few minutes to sit in the meditation area of the walkway...it's a lovely spot!



Some Useful COVID-19 Information

Courtesy of the Adult Education Committee

The following is forwarded from Dr. Irene Ken, whose daughter is an Asst. Prof in infectious diseases at Johns Hopkins.

- * The virus is not a living organism, but a protein molecule (DNA) covered by a protective layer of lipid (fat), which, when absorbed by the cells of the ocular, nasal or buccal mucosa, changes their genetic code. (mutation) and converts them into aggressor and multiplier cells.
- * Since the virus is not a living organism but a protein molecule, it is not killed, but decays on its own. The disintegration time depends on the temperature, humidity and type of material where it lies.
- * The virus is very fragile; the only thing that protects it is a thin outer layer of fat. That is why any soap or detergent is the best remedy, because the foam CUTS the FAT (that is why you have to rub so much: for 20 seconds or more, to make a lot of foam). By dissolving the fat layer, the protein molecule disperses and breaks down on its own.
- * HEAT melts fat; this is why it is so good to use water above 25 degrees Celsius for washing hands, clothes and everything. In addition, hot water makes more foam and that makes it even more useful.
- * Alcohol or any mixture with alcohol over 65% DISSOLVES ANY FAT, especially the external lipid layer of the virus.
- * Any mix with 1 part bleach and 5 parts water directly dissolves the protein, breaks it down from the inside.
- * Oxygenated water helps long after soap, alcohol and chlorine, because peroxide dissolves the virus protein, but you have to use it pure and it hurts your skin.
- * NO BACTERICIDE SERVES. The virus is not a living organism like bacteria; they cannot kill what is not alive with antibiotics, but quickly disintegrate its structure with everything said.
- * NEVER shake used or unused clothing, sheets or cloth. While it is glued to a porous surface, it is very inert and disintegrates only between 3 hours (fabric and porous), 4 hours (copper, because it is naturally antiseptic; and wood, because it removes all the moisture and does not let it peel off and disintegrates). 24 hours (cardboard), 42 hours (metal) and 72 hours (plastic). But if you shake it or use a feather duster, the virus molecules float in the air for up to 3 hours, and can lodge in your nose.

* The virus molecules remain very stable in external cold, or air conditioners in houses and cars.

They also need moisture to stay stable, and especially darkness. Therefore, dehumidified, dry, warm and bright environments will degrade it faster.

* UV LIGHT on any object that may contain it breaks down the virus protein. For example, to disinfect and reuse a mask is perfect. Be careful, it also breaks down collagen (which is protein) in the skin, eventually causing wrinkles and skin cancer.

* The virus CANNOT go through healthy skin.

* Vinegar is NOT useful because it does not break down the protective layer of fat.

* NO SPIRITS, NOR VODKA, serve. The strongest vodka is 40% alcohol, and you need 65%.

* The more confined the space, the more concentration of the virus there can be. The more open or naturally ventilated, the less.

* This is super sad, but you have to wash your hands before and after touching mucosa, food, locks, knobs, switches, remote control, cell phone, watches, computers, desks, TV, etc. And when using the bathroom.

* You have to MOISTURIZE. HANDS DRY from so much washing, and the molecules can hide in the micro cracks. The thicker the moisturizer, the better.

* Also keep your NAILS SHORT so that the virus does not hide there."

Adelante Submissions:

During this time of social distancing due to COVID-19, let us not become distant from each other. Speak with fellow congregants, friends and family. Send me your pictures of family Shabbat, musings, illustrations, etc. I will share as many as space allows in next month's Adelante.

The deadline for turning in articles, items and photos for the September 2020 Adelante is August 20, 2020. Late items may not be included. Please do your best to keep to that schedule to facilitate a timely completion of the Adelante! All content can be e-mailed to Beth Tierney at **cambrien73@gmail.com**

“Getting up to Speed” Technology Wise for the High Holy Days

High Holy Day services will be via Zoom and streamed live to the Temple Facebook page (you can still watch services on Zoom). If you haven't seen or heard Friday night services and Saturday Torah study on Zoom, then it's a good time to learn about technology before Rosh Hashanah. You can Zoom or do Facebook, the latter without being a member of Facebook. You can Zoom on a landline (you can hear but not see), an iPhone, an Android phone, a Kindle 10, an iPad, a Chromebook, a laptop or a desktop computer.

We have been doing Friday night services and Saturday Torah study sessions via Zoom and Friday services can be seen live on Facebook. To join using Zoom you need to get the Zoom app for iPhone or Android phone, iPad, Chromebook or laptop or desktop computer or Kindle 10. There are tutorials on Zoom.us or YouTube. Steve Haydu can also help. His phone number is 575-921-1304. You can also use a landline (an old fashioned phone) to call in and hear services. If you do that you'll probably be charged a long distance rate. You will also need to mute yourself by doing *6. To unmute yourself you do *6 again.

Go to the Temple Beth-El, Las Cruces, NM Facebook page (there's more than one Temple Beth-El in the U.S). If Facebook says to Log In or Create an Account, ignore that; eventually it may say (Not Now) and you can click on Not Now. Scroll down or look for Videos and click on the service you're looking for.

Most congregants have been using laptops, computers or iPads, but a few have been using their smart phones or a landline. Chances are someone you know knows how to Zoom or watch on Facebook, ask around. If you have a grandchild or teenager you're probably in luck!

No, this year won't be the same. We will miss hugging each other, sitting next to each other, and singing and praying as a group, but for those of us who have participated and/or watched services on Zoom, we continue to have a sense of community, we enjoy seeing each other, and although we're singing and praying in our individual homes we know others are doing the same in their living rooms, kitchens, etc. We are keeping Judaism and our temple community alive.

Hopefully by next Rosh Hashanah we'll be in the

sanctuary, but in the meantime, enjoy having your cat walk across your laptop screen, get up and let the dog out and enjoy the chirping of your bird on the window-sill. This year we can take our pets to services. This may be the only time our pets will join us.

If you're wearing shorts, your hair is a mess, etc., you can stop the video, and still listen to the service and no one will be wiser. Think positive -- we can do this.

Cherri Hudson-Brown,

Chair, Religious Practices Committee, and someone who learned how to use her iPad to Zoom.

Chair Yoga with Gillian Baudo

Free online classes through
the Jewish Federation of Greater El Paso.

Mondays and Wednesdays at 10am.
Gillian teaches mindfulness, stretching and breathwork during this 30 minute class that's open to all levels. You can call in with Zoom (contact Gillian, gillian.baudo@gmail.com for Zoom meeting information) or visit the Jewish Federation's Facebook page (jewishelpaso.org) for the live broadcast.



Seated Cat and Cow



Seated Forward Fold



Chest Expansion



Seated Pigeon



Seated Spinal Twist

Editor's Corner



Shalom Chaverim!!

I hope that you are all doing well. It has been a busy month for me with learning that we would be going back to the schools in a hybrid model with two days in the classroom and three remote learning at home. This news was followed shortly with the decision that we would be starting the year 100% virtually. This is the model that we will be following for Religious School as well. While I will miss being in a room with all the kiddos, there are some great resources that I have learned about through my Zoom seminars as part of new-CAJE which I have been attending this month.

In the meantime, Morgan and I have been using the extra time that we have to learn guitar with the hopes that eventually we will be able to add some musical accompaniment to services. Right now we are working on "Bad Moon Rising." Perhaps not something that could be used in synagogue but if my child is learning the classics, I am doing something right.



Last month, the two of us led family services along with several other amazing folk. The Torah portion for that week was Chukkat-Balak. If you will indulge me, I would like to share the D'var Torah that I gave:

"Our Torah portion this week, Chukat-Balak is jam packed with action. After wandering in the desert for 39 years, the Israelites arrive at Kadesh where Miriam dies. The Israelites complain about being brought to a place with no water. Moses hits a rock and G-d make water pour forth from it but because he did not acknowledge G-d's part in this, Moses and Aaron are not allowed to enter the promised land. The Israelites conquer the Amorites at Heshbon and dwell there. Balak, king of nearby Moab in fear, calls upon Balaam to curse the Israelites. G-d makes Balaam's donkey talk (long before Shrek), and causes Balaam to bless, rather than curse the Israelites. Any one of these things is important enough to talk about but what I want to focus on is what we started with and then glossed over: Miriam dies.

Miriam's importance to the people of Israel really cannot be overstated. It was her idea to place baby Moses in the basket to be found by Pharaoh's daughter. Without her intervention, one of our greatest leaders would have died in his infancy. And not only did she save his life, she made sure that Moses would remain in the care of herself and mother. While the Israelites were wandering in the desert after the exodus, wherever Miriam went, a well followed her and there was water. But the full importance of Miriam isn't spoken about explicitly and doesn't occur until after her death. Immediately after her death, the water, the life giving liquid that went wherever she did, stops.

This is Miriam. When we think about leaders, her name isn't one that immediately springs to mind. Nor is she one of the ancestors whom we call on when we pray. But she is the nurturer. The giver of strength and nourishment that sustains us. The one who shows us how to reach out to G-d in song and joy."

May we all be like Miriam and find strength as we help other to remain strong.

L'hitraot,
Beth Tierney

Temple Beth-El Board of Trustees Meeting Summary— July 16, 2020

Martha Roditti did a very nice invocation, and the minutes for May and June were approved unanimously. Luke made a request to have funds readily available for the Mitzvah committee to use and a line item to put donations in. There is now a line item for this purpose. The board is working diligently on mapping out and writing down standard procedures for the many activities and administrative tasks that need to be done to maintain the Temple. The end of fiscal year 2020 left the Temple finances in the black at about \$42,400. As of July 15, our net income is about \$25,900. We have been receiving membership dues (Thank you very much!). The board voted to make the following people honorary members of Temple Beth El: Robert French (Jewish Federation of Greater El Paso), Ruth and Barney Sugarman, Lila Ziegler, and Klim Maling. The Religious Practices Committee met with Rabbi Sofia, and plans are in the works for upcoming services and educational and social events. Rabbi Sofia's first service with us will be August 14th, and there will be a 'Meet and Greet' with her on August 9th. The Adult Education committee is planning programs to be held via Zoom, and the Religious School has hired Marlene Benz to be the school Administrator for this coming year. Most of the transition teams are merging with standing committees. The temple is exploring with DACC (the community college) to have an intern help revitalize and maintain our web page. A work group to plan and prepare for a phased reopening of the Temple for in-person activity is being formed. If anyone needs a Shabbat prayer book, or assistance with Zoom or Facebook in order to join in services, please email: secretary@tbelc.org

Temple Beth-El Mitzvah Team

The Mitzvah Team has identified the following tasks that it would like to perform and support with the help of Temple volunteers (please let us know if you can assist us):

- Develop a phone tree and other ways reach out to members.
- Support the Rabbi and the Religious Practices Committee in providing special arrangements for shiv'ah minyans.
- Visit homebound and hospitalized members and members living in nursing homes, assisted living facilities, and hospice.
- Provide transportation to worship services and Temple events, medical appointments, and errands.
- Celebrate simchahs (life's joyous moments).

Please contact:

- Alison Mann—575-680-0207
Alisonmd4@gmail.com
- Luke Duddridge—727-204-6086
- David Decker—575-556-4056
deckerdavid28@gmail.com

If you are aware of any members in need of the services listed above, please let us know!

BOARD OF TRUSTEES 2020-2021

President-Cheryl Decker
Vice-President-Lynne Zeemont
Secretary— Steve Haydu
Treasurer— Michael Mandel
Barbara Berger Pearie Bruder Marieka Brown
Bryan McCuller Martha Roditti Nan Rubin
Joanne Turnbull
Jeff Lewis (Mensch Club) Dee Cook (Sisterhood)

Donations through June 24, 2020

General Operating Fund:

Daniel and Simy Allan, in memory of Elissa
Poel and Sara Allan
Bob & Carla Libby, in memory of Natalie
Libby
Alison and Gary Mann, in memory of Sarah
Meltzer Smalley
Jeff and Cherri Hudson-Brown, in memory of
Logan Pearson

Religious School Fund:

Art and Wendee Lorbeer, In memory of
Kathryn Goldstein

Given changes to the standard deduction limits, we will not be providing 2020 contribution statements for tax purposes. If you would like a statement, please contact the temple treasurer Michael Mandel to request one.

“Have you considered a bequest to Temple Beth-El?”

An important part of our future is represented by bequests made by members.

Thoughtful bequests enable Temple Beth-El to retain a future of Jewish life for generations to come. From funding our Rabbi to scholarships at our religious school, your generous gift maintains our financial health.

A simple codicil can be added to your existing will, if you wish to make a bequest, such as:
“I give and bequest to Temple Beth-El, located in Las Cruces, New Mexico, the sum of \$_____ for _____ percentage of my estate as finally determined for federal estate tax purposes].

A will or codicil should be prepared by an attorney. Please call the Temple office at (575) 524-3380 to discuss including Temple Beth-El in your estate.

TEMPLE FUNDS

Donations are gratefully accepted for the following:

General Operating Fund—For the day-to-day operation of TBE.

Biblical Garden Fund—To provide the infrastructure for biblical plants and trees, and bricks in the fountain meditation area and on the brick walkway.

Rabbi Larry and Rhonda Karol Campership Fund—Providing scholarships for Temple students to attend Jewish summer camp programs.

The Mitzvah Team Fund- to assist this voluntary team of Temple Beth-El members that, upon request and dependent upon availability, will provide non-emergency support service to members of the temple

Social Action Fund—For projects that benefit our community and Las Cruces and Southern New Mexico.

Irving Batkin Memorial Scholarship Fund—To broadly support Jewish education, based on merit or need, through participation in the TBE Religious School, camperships, and/or pursuit of Jewish collegiate studies or rabbinical studies.

Frances Williams Library Fund—To provide books and infrastructure for the TBE library.

Rabbi Gerald M. Kane Fund—Provides funds to help further adult education and cultural programming at TBE.

Temple Beth-El Religious School Fund—Supports the regular and special programming planned by faculty, students and the Religious School Committee.

Temple Beth-El Youth Fund—Support for Youth activities at TBE.

Periodically the temple may list short-term projects or needs. Contributions that do not specify a project or fund will be added to the General Operating Fund. If you have a question or wish to contribute to a project not listed here, please contact our Temple Beth-El Treasurer, Michael Mandel.



Temple Beth-El is part of Amazon Smile, which offers members of Temple Beth-El an opportunity to participate in Smile Amazon and donates 0.05% of all purchases back to the Temple. The process is very simple – go to www.smile.amazon.com. You will be required to enter the charity to which you wish to donate – just type in Temple Beth-El, Las Cruces in the charity box and this will set the Temple as your charity of choice. Then just shop – pretty easy and since many people today shop online via Amazon, it becomes a win-win situation for all.

**Visit the Temple Beth-El Website—www.tbcl.org
for in-depth information about Temple and its programming and updates on current Temple events**

Temple Beth-El is on Facebook!

<http://www.facebook.com/pages/Temple-Beth-El/115816285166004>

(It is open for all to see!)

If you are on Facebook already, find our page, click “Like” and join us in our Facebook community!



**Tanah
Hemingway**

(575) 524-4329

most nights

P.O Box 16318

Las Cruces

NM 88004

Editing:

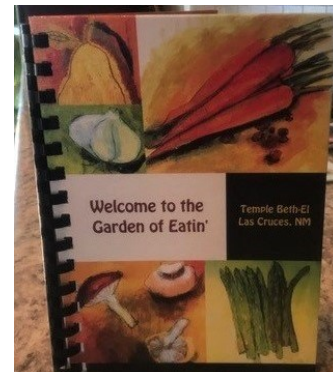
Books, scientific papers, theses, dissertations

Technical documents of all sorts.

(for accuracy, continuity, organization, style
grammar, readability, supportability, etc.)

**Temple Beth-El Cookbook
“Welcome to the Garden of Eatin’”**

\$15, Cash or Check



Contact Rose Jacobs for copies

arejay11@icloud.com or

512 680-2783



Ron Bruder

ASSOCIATE BROKER

ronbruder@topproducer.com

Cell: 575-312-7330

Office: 575-522-3698

**Steinborn & Associates
Real Estate**



AUGUST 2020

Sun	Mon	Tue	Wed	Thu	Fri	Sat
						Av 11 1 Talmud Study 9:00 am via Zoom Torah Study 11:00 am via Zoom
Av 12 2	Av 13 3 Short Story group 11:00 am via Zoom	Av 14 4 Short Story group 11:00 am via Zoom	Av 15 5 Tanakh Study 10:00 am via Zoom	Av 16 6	Av 17 7 Lay-Led Family Shabbat Services 6:30 PM via Zoom	Av 18 8 Talmud Study 9:00 am via Zoom Torah Study 11:00 am via Zoom
Av 19 9 Meet n'Greet with Rabbi Zway 5:00 PM via Zoom Win Jacobs, "Celebration of Life", 7:30 PM	Av 20 10 Short Story group 11:00 am via Zoom	Av 21 11 Short Story group 11:00 am via Zoom	Av 21 12 Tanakh Study 10:00 am via Zoom	Av 23 13	Av 24 14 Shabbat Services with Rabbi Zway 6:30 PM via Zoom, virtual Oneg to follow	Av 25 15 Talmud Study 9:00 am via Zoom Services with Rabbi Zway 10:15 am , 11:15 am Torah Study, both via Zoom
Av 26 16	Av 27 17 Short Story group 11:00 am via Zoom	Av 28 18 Short Story group 11:00 am via Zoom	Av 29 19 Tanakh Study 10:00 am via Zoom	Av 30 20 Board Meeting 6:00 pm via Zoom	Elul 1 21 Shabbat Services with Rabbi Zway 6:30 PM via Zoom	Elul 2 22 Talmud Study 9:00 am via Zoom Services with Rabbi Zway 10:15 am , 11:15 am Torah Study, both via Zoom
Elul 3 23	Elul 4 24 Short Story group 11:00 am via Zoom	Elul 5 25 Short Story group 11:00 am via Zoom	Elul 6 26 Tanakh Study 10:00 am via Zoom	Elul 7 27	Elul 8 28 Lay-Led Shabbat Services with BEMY/BETY 6:30 PM via Zoom	Elul 9 29 Talmud Study 9:00 am via Zoom Torah Study 11:00 am via Zoom
Elul 10 30	Elul 11 31 Short Story group 11:00 am via Zoom					

3980 Sonoma Springs Avenue
Las Cruces, NM 88011

Phone: 575.524.3380
Fax: 575.521.8111

President::
Cheryl Decker

Student Rabbi: Sofia Zway

Rabbi Emeritus:
Lawrence P. Karol

The Temple Beth-El Newsletter is produced regularly at Las Cruces, New Mexico. Editor: Beth Tierney. Copy Editors: James Rosenthal, Tanah Hemingway, Larry Karol. Circulation: Cheryl Decker. We welcome Adelante sponsorships by or for Temple members and non-members. Sponsorships can be mailed to the Temple; receipts are provided upon request. We reserve the right to edit all sponsorships. Non-member sponsorships (with no ad) are \$25/year. Annual sponsorship rates are as follows: 2x3 business card \$150; Quarter page \$300; Half page \$600. For information about sponsorships, please contact the Temple Office.

**Temple Beth-El and “Adelante” are on the web at
www.tbclc.org**

AUGUST, 2020



**Temple Beth-El
3980 Sonoma Springs Avenue
Las Cruces, NM 88011**