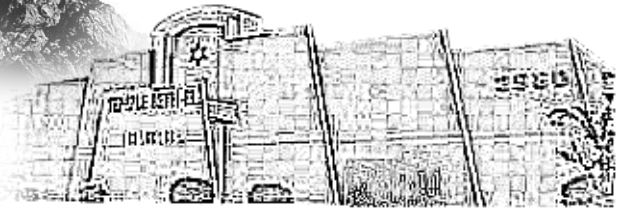




A Monthly Publication for Temple Beth-El,
Las Cruces, New Mexico



DECEMBER 2020 (KISLEV-TEVET 5781)

TEMPLE BETH EL FOCUS GROUPS

Fall, 2020



Focus Group 3

SHOULD WE CONTINUE OUR AFFILIATION WITH UNION
FOR REFORM JUDAISM (URJ)?

Sunday, December 6, 2020
3:00 PM

PLEASE JOIN US On ZOOM – ADDRESS TO COME

These are questions asked by members of our community. Your participation in the Focus Groups will help to inform important Board decisions.

SHOULD WE CONTINUE OUR AFFILIATION WITH UNION FOR REFORM JUDAISM (URJ)?

1. WHAT ARE THE BENEFITS OF URJ MEMBERSHIP?
2. WHAT BENEFITS HAVE WE USED IN THE PAST?
3. WHAT DO YOU THINK ABOUT CONTINUING MEMBERSHIP?

Resource Person Bill Stein
Facilitator: Nancy Barnes-Smith
ZOOM Master: Jeff Brown

Winter Clothing and Blanket Drive

The Temple Beth-El Youth group and the Social Action/Adult Ed committee are co-sponsoring a winter clothing/blanket drive with donations to be given to Casa de Peregrinos.

**The drive will be held on Sunday,
December 13 from 11 am – 3 pm.**

The collection will be managed in the same way as the distribution and collection of the High Holy Day prayer books. People wishing to donate may pull into the circular drive on the side of the synagogue and donations will be collected from each car. *Please wear a mask and respect social distancing. In addition, members of the youth group are willing to go to people's homes to collect from those who are unable to bring things to the Temple (contact Amalia Zeitlin 575-642-3727). Caring for others is also a way of caring for ourselves.*

Sisterhood Chanukah boutique by appointment only this year due to COVID-19.

Michele Blum can be available to participate with one-on-one appointments for people who wish to purchase items.

If you need something, please contact Michele at
phone: 201-926-6545 or email: michele.blum04@gmail.com
I will be available the week of November 29-December 5, 2020.

Remember to wear a mask!!! Cash and checks only.
NO CREDIT CARDS .

Thanks,
Michele



Worship Schedule (Via Zoom)

You can also watch the Facebook livestream for holiday and Shabbat services on this page:

<https://www.facebook.com/pages/category/Synagogue/Temple-Beth-El-115816285166004/>

(if you do not have a Facebook profile now, and it asks you to join when you go to the page, click "Not Now" and that box will disappear).

If you do not have a siddur at home, you can follow along in the Mishkan T'filah for Shabbat flipbook provided by the Central Conference of American Rabbis at this link

<https://www.ccarnet.org/publications/mishkan-tfilah-for-shabbat/>

Zoom invites for Torah Study (Saturday mornings) and Services, as well as any text to follow, will be sent out weekly.

Wednesdays—

Tanakh study 10:15 am with Rabbi (Emeritus) Larry Karol

Contact Rabbi Karol (rablpkarol@gmail.com) to attend

Saturdays—

Talmud Study 9:00 AM

Contact Bryan McCuller (mccullerbryan@gmail.com) to attend

Friday, December 4

6:30 pm Family Service for all ages—
led by Rabbi Sofia Zway

Saturday, December 5

9:00 am Talmud Study
10:15 am Shabbat Morning Services
11:15 am Torah Study *led by Rabbi Sofia Zway*
Parshat Vayishlach
Genesis 32:4-36:43

Friday, December 11

6:30 pm Hanukah Celebration and Shabbat Evening Service— *Led by Rabbi Larry Karol*

Saturday, December 12

9:00 am Talmud Study
11:00 am Torah Study *led by Rabbi Larry Karol*
Parshat Vayeshev
Genesis 37:1—40:23,
Numbers 7:18-29

Friday, December 18

6:30 pm Shabbat Evening Service—
led by Rabbi Sofia Zway

Saturday, December 19

9:00 am Talmud Study
10:15 am Shabbat Morning Services
11:15 am Torah Study *led by Rabbi Sofia Zway*
Parashat Miketz
Genesis 41:1-44:17

Friday, December 25

6:30 pm Shabbat Evening Service -
lay-led by Stuart Kelter and Leora Zietlin

Saturday, December 26

9:00 am Talmud Study
11:00 am Torah Study *led by Rabbi Larry Karol*
Parshat Vayigash
Genesis 44:18—47:27

DECEMBER 2020 (KISLEV-TEVET 5781)**Yahrzeits-November 29, 2020 through
January 2, 2020**

(Listings include the name of the loved one on the yahrzeit list and the name of the congregant or congregants remembering that loved one—asterisks indicate loved ones remembered with memorial plaques)

Read on Friday, December 4

Stanley S. Bergman (Nancy Bergman)
Daisy Chapman (Diane Fleishman)
Ivy Dessaur*
Ida Weinstein Epstein (Marlene Benz)
Samuel Goldman (Rochelle Silverman)
Celia Greenberg (Cyrille S. Kane)
Dave Levy* (Sam Klein)
Bernie Lieberman*
Sol Podolsky (Rosalyn Richman, Selma Ryave)
Sam Shickler*

Read on Friday, December 11

Jay Feldman* (Louise Feldman-Baskey)
Samuel David Goldberg (Richard Goldberg)
Helen Isaacs (Linda M. Kruger)
Florence Kaye (Susan Quinn)
Charles Klein (Debbie Levy)
Hyman Krepps*
Tony Pakinkas (Tanah Hemingway)
Rose Rice Orlins*
William Silberman (Cyrille S. Kane)
Tova Zameret (Erich Zameret)

Read on Friday, December 18

Baruch Freedental*
Max Freudenthal*
Joel Glickler* (Joanne Glickler, Ben Glickler, Rachel Glickler Duggins)
Leopold Gluck*
Eleanor Goldman (Rochelle Silverman)
Lee Gutman (Allen Palanker)
Sidney Kaye (Susan Quinn)
Ken Kessin* (Deana Kessin)
Lynn Loudon (Cheryl A. Loudon-Decker)
Etta Muchnikoff (Stan Muchnikoff)
Irv Rothman (Nina Rothman)
Margaret Schoenbrun*
Barbara Zenz Siegel*
Ruth Steinborn*
Abraham Weinglass (Teddy Weinglass)
Carolyn Wolfe*

Read on Friday, December 25

Lois Bissonette (Lynn Berkeley)
Morris Gluck* (Helen Gluck)
Sarah Jacobs*
Lillian Klein (Debbie Levy)
Dorothy Leibson*

Michele Murdoch*

Sam Ross (Irwin Ross)
Harry Segal (Michele Blum)
Sonia Silverman (Jerald Silverman)
Sarah Spiegel (Sheri Spiegel)
Lois Stern*
Ronja Van Stellingwerf*
Sylvia Weiss* (Diane Bass)
Evelyn Willman* (Elliott Willman)

Read on Friday, January 1

Ed Entin (Jason Rosenberg)
Ilona Farkas* (Yosef Lapid)
Aron Fiszbein* (Abraham Fiszbein)
Gerard Frieder* (Linda Fisher)
Edward Friedman (Stefani Singer)
Ruth Gluck*
Henry Greenberg (Cyrille S. Kane)
Ira Hudson III (Cherri Hudson-Brown)
Alvin Krasner (Frima Marquez, Jeffrey Marquez)
Harry Kuznekoff*
Dorothy Palanker (Allen Palanker)
Nancy Rees Brown (Marieka Brown)
Arnold Spiegel (Sheri Spiegel)

Condolences to:

Terri Sugarman and her family on the passing of her mother, Ruth Ann Sugarman, on Monday November 9, 2020.

Stan and Gerie Muchnikoff on the death of Stan's sister, Roz Sugarman, on Thursday, November 26 in Las Cruces. A memorial service will be held on Zoom on Sunday, December 6 at 1:30 pm. The Zoom link will be sent later this week.

May their memory be for blessing.

In order to ensure that the name of your loved one will be recited during services, we have instituted the following practices:

- The Hebrew dates for each week's Yahrzeits are listed in each Adelante.
- Names are read on the Shabbat **following** the Yahrzeit, or on the day, if it falls on that Shabbat.
- Hebrew vs. conventional (Gregorian) calendar: The temple's tradition is to base the Yahrzeits list on the Hebrew calendar. Those who wish to have a name read on a Friday night close to the conventional (Gregorian) calendar date are asked to please email or call the Temple office a few days prior to the service.

*Asterisks indicate that a loved one has been permanently memorialized with a plaque in the Temple sanctuary. If you are interested in acquiring a plaque for your loved one, contact the Temple office.



Chanukah

By Rabbi Sofia Zway

As we enter the coldest and darkest time of the year (at least in the Northern Hemisphere!), I'm thinking about the wonderful way in which the festival of Hanukkah helps us find hope and light. Hanukkah begins on

the 25th of Kislev, and is the only Jewish holiday to straddle two months! The famous rabbis Hillel and Shammai disagree about how we should light the Hanukkah candles. Should we start with eight lights on the first night and then decrease until we light only one candle on the eighth night, as Shammai suggests? Or should we follow Hillel's opinion and start with one candle on the first night and increase until we light eight on the last night?

Each rabbi bases his opinion on different foundations, but the principle which grounds Hillel's view always moves me greatly: In matters of holiness we always increase and do not decrease. Today, when we light our menorot, we follow the instructions of Hillel, increasing the lights of Hanukkah from one on the first night, to eight on the last night (a total of 44 candles!).

In our tradition, the rabbis conceive of the events of the Hanukkah story as a miracle, for a small batch of oil lasted for a full eight days. But I don't think this is the miracle of our Festival of Lights. For me, the miracle lies in Hillel's teaching that we should always increase in matters of holiness. In our darkest and coldest times, our tradition teaches us to seek holiness, to seek light and to be a source of light and holiness in our fractured world. Throughout time, we have been witness to individuals who have embodied this principle in thought and in deed, always seeking, despite the darkness, to bring light into the world. Just like the Shamash with which we light our Hanukkah candles, we have the capacity to increase the light and holiness in the world. Hanukkah teaches us about miracles: the triumph of light over dark, hope over despair, holiness over destruction. These miracles don't just happen. Rather, it is up to us to manifest them through our words and our actions. May we look upon our Hanukkah candles this year and see ourselves reflected in their light, and may we find strength, courage and hope.

Adult Education Series **Led by Rabbi Sofia Zway** **Sundays beginning Dec 6th, 12-1pm**

Yours and Mine - is Hers: Stories of Women in the Talmud

In this four-part adult education course, we will study the stories of four named women in the Talmud. Each class will focus on a different woman. Together, we will seek to uncover who the heroes of these stories are. How are they represented in the text? What can these stories - presumably written from the perspective of male rabbis - teach us about women's lives during Talmudic times? What do these stories teach us about women's relationships with Judaism and with their husbands? What do these stories elucidate for us about the way the rabbis thought about women? As we 'reclaim' these stories from the boys' club that wrote them, we will breathe new life and new perspective into the stories of these women as we ask what lessons we can learn from them to apply in our lives and in our own times. There will be one class each month, and the text for each class will be provided ahead of time.

Sunday December 6th - 12:00-1:00pm
January -TBA
February -TBA

Financial Assistance

These are challenging times for all of us but Temple Beth-El is here to support you. If you are struggling to buy groceries, or pay rent, mortgage, or other bills, we have a large balance in the Rabbi's Discretionary Fund to assist our community members.

To request short term assistance, you can contact Temple President, Cheryl Decker at doubledeckerohio@msn.com or 575-640-9559, or Temple Vice President, Lynn Zeemont at mudjob@aol.com, or 914-391-0903.

Thank you to all our donors who have made this assistance possible.



Transition Times

The Transition: Phase II

Phase I of Temple Beth-El's Transition dealt with Rabbi Karol's reduced time and retirement. Nine transition teams were formed during Phase 1 to manage temple functions. All transition teams have now become standing committees or been dissolved. Phase I of our transition has ended, and we have entered Phase 2.

Focus Group Two: "Can We Afford a New Rabbi?" At its November meeting, the board voted to accept the findings and recommendations from the Discussion Forum held on November 15, 2020. The major finding is this: There is not adequate funding to hire a Rabbi at this time.

Dues have increased and expenses have decreased, which will help build reserve funding, but that is not enough to sustain a full-time Rabbi's employment, especially in light of possible needed repairs to the Temple.

Members are passionate about having a new Rabbi, acknowledging the importance to the TBE's growth and wellbeing. Congregants also voice the need for careful reflection during this time of transition as captured by the following comment: "We need to take time to determine who we are/want to be as a congregation and what kind of Rabbi we want."

Recommendations. Develop a plan that includes organizational introspection and improved infrastructure so that a Rabbi can be hired to begin mid 2022. Note: Plans depend on reduced threat of COVID. Hopefully, protocols combined with an effective vaccine will reduce spread of the virus by late 2021.

1. Dues are the primary area where the membership has influence. Dues have increased this year, but not enough to employ a Rabbi. Dues should at least equal the cost of the rabbi. Members identified three ways to increase dues:
 - ♦ All members need to meet their financial obligations via their fair share pledge.

- ♦ Reach out to former members and personally invite them to return, participate, and shape TBE's future.
 - ♦ Those who are able should consider increasing their dues.
2. Continue rabbinic support for TBE during Phase 2 by:
 - ♦ Alternating student Rabbi with lay-led services.
 - ♦ Using trained (certified) lay people.
 - ♦ Interim Rabbi (salary only, no benefits)
 3. Conduct Focus Groups to address Religious School, Religious Practices, Sisterhood, and Rabbi Search. (first six (6) months of 2021)
 4. Reach out to 'lapsed members.' (Membership Committee, early 2021)
 5. Review and revise essential documents, including bylaws and policies, to improve organizational infrastructure. (begin December 2020)
 6. Participate in URJ Benchmarking Study and other board development activities (Board 2021).
 7. Organize Team to develop a strategic plan that will concentrate efforts on moving forward during, through, and beyond COVID.

Nancy Barnes Smith (nonprofitsupportandsuccess.com) facilitated Focus Group 2 and participated in developing these recommendations. For a full copy of the report, please contact Martha Roditti (mroditti@nmsu.edu). A summary of the URJ Affiliation Focus Group will appear in the January Adelante.

SISTERHOOD: THE NEXT 65 YEARS

Last month's article on TBE's Sisterhood overviewed our history. After forming the Religious School, Sisterhood declared itself a formal organization in 1955. In those early days, Sisterhood sponsored lay-led services (sound familiar?) and donated an ark, altar cloth and Sefer Torah to Las Cruces' fledgling Jewish community. Over the past 65 years, Sisterhood has carried on the legacy of these early temple women through prayer, study, tzedakah and fellowship. At Shabbat Services on November 13, Lynn Zeemont offered the following tribute:

We are celebrating 65 years of Sisterhood at Temple Beth-El. As part of this celebration, I would like to honor us, the women of modern society. I believe we all recognize the need to reenergize the commitment to women's rights.

This commitment to women's rights is not a male thing or a female thing. It is not a Hollywood thing or a political thing. The commitment to women's rights is a human thing. And the commitment needs to happen in the workplace, in families, and all over the world. We are all the same, because we all want the same thing—we want respect and love and kindness. And if I could have all those three things (plus a new iPhone 12,) I would be complete.

We can see the progress we've made and glimpse the progress yet to come. It is now 100 years after the ratification of the 19th amendment to the US Constitution granting women suffrage. And this year, we have elected 102 women to the House of Representatives, and 26 women will be serving in the Senate, making up a quarter of that body. Nationwide, there are 90 women holding Executive Office in their states. But most important, we have elected our first female Vice President, Kamala Harris.

Our work is far from finished, however. There is still violence and sexual harassment in the home and workplace. Our reproductive and health care rights are being threatened. A gender gap in both wages and leadership still exists in the workplace. But uncovering the colossal scale of the problem is revolutionary in its own right.

To quote the late Justice Ruth Bader Ginsburg: "Women belong in all places where decisions are being made." I am sure that Justice Ginsburg would say that speaking the truth is the most powerful tool we have. The benefits of gender equality and the advancement of women in the workplace and the political arena is good for all of the country. And it is not just because it is the right thing to do—or the nice thing to do—but because it is the smart thing to do. So please raise your glasses because together we are louder. Together we are stronger.

The future of Sisterhood is in our hands. We have the privilege and obligation to carry the legacy of Sisterhood almost-seven decades of service into the future. For the next 65 years and beyond, Sisterhood will continue to be an integral part of our community's success. We will continue our commitment to the high ideals of Judaism through education, charitable, social and religious activities. All Temple women are welcome. Our community is more important than ever. Please join us in creating Sisterhood's future.

COPING WITH COVID STRESS

This is part of a series sponsored by the Adult Education Committee to support our community during the pandemic. Please let us know what you find helpful and what else you would like to know by submitting feedback to:
copingtemplebethel@gmail.com.

Just about all of us are feeling depleted by the pandemic and can't wait for it to be over. As with other sources of pain or discomfort, the more energy we put into wishing the suffering away, the worse it feels. Fortunately, there are ways of changing one's focus to help ease the suffering. (Please read on!)

Who is especially vulnerable to the stress of the pandemic? (If you've lost a loved one to the pandemic, please see last month's Adelante article by Joanne Turnbull, "Coping with COVID: Grief.")

- You've lost your livelihood due to the pandemic or are in danger of it.
- Your school-age child(ren) are now learning from home, while you are also working from home.
- Your child(ren) or teenager(s) are going stir crazy at home and missing their friends.
- You have an elderly parent in a facility that restricts visitation.
- Your work or living situation creates high risk for contracting the virus, or perhaps you're even a healthcare worker caring for patients with COVID-19.
- You have a pre-existing condition that increases the risk of a severe illness if you contract the coronavirus.

If any of the above is true, don't just stress out, reach out for help in solving, or at least mitigating, the problem! If needed, seek financial assistance. New Mexico lists many agencies and programs to help with finances, food insecurity, health care and more:

<https://www.newmexico.gov/i-need-assistance>. Learn how to use the internet to supplement your child's education. Compensate for not being able to visit people in person by calling or Zooming more often. If at high risk for the virus, take precautions and be as conscientious as possible.

What to do if solutions are inadequate or even impossible? What if you're still stressed?

Stay connected! Seek support from friends and family, and members of Temple Beth-El. If seriously anxious or depressed, enlist the help of a therapist. Stay informed, but don't overindulge in the news. Don't reach for

Tikkun Olam Opportunities **Giving to and volunteering at** **Casa de Peregrinos & El Caldito**

Casa de Peregrinos provides staple foods to the needy, and El Caldito provides a meal 365 days a year to the hungry in our community. Both organizations are part of the Community of Hope located on the same campus at 999 W. Amador. There are common interests and goals and the food received is often shared between the two organizations in order to best utilize both perishable and non-perishable foods. There is also a need for wide-mouth glass bottles and containers and gently used clothing.

This is a critical time for the organizations. Due to the COVID-19 crisis, they have seen an increase in demand. At the same time, they have had a decrease in volunteers, particularly on weekends. In order to maintain social distancing, the El Caldito soup kitchen has switched to handing out meals to go.

For more information on current needs, questions, or to volunteer, contact Casa de Peregrinos (575-523-5542) and El Caldito (575-525-3831) directly.

Wednesday Morning Breakfast

The Wednesday Morning Breakfast has resumed in Zoom format. The program will begin 9 am weekly. Phil Alkon is the organizer and should be contacted at philipalkon@gmail.com or 575-524-6945 with general questions or recommendations regarding future speakers.

Patrick Quinn is assisting Phil with developing and maintaining the mailing list and with Zoom access. If you have questions about either of those issues please contact Patrick at patrick.kaye.quinn@gmail.com or 575-522-4692.



© Can Stock Photo

Jews and Star Trek



It's time for some diversion during the Covid-19 pandemic. A "Jews and Star Trek" group is being organized. You don't have to be Jewish to belong, but early discussions will be on the actors in the original Star Trek, William Shatner and Leonard Nimoy, who were Jewish, and Jewish values as shown through the various series and movies. Basically it's an excuse to talk about our favorite episodes, characters and the world we wish we had.

For more information, contact Rabbi Emeritus Larry Karol at rablpkarol@gmail.com or Cherri Hudson-Brown at cjhudson@comcast.net.



Honor the memory of loved ones with a memorial plaque and mark celebrations and milestones (and also the memory of friends and family) by adding leaves to our Tree of Life.



Bricks for the Biblical Garden and Brick Walkway

Please consider ordering one to mark that special occasion of your own or a loved one. Call Dee Cook or Alison Mann, and they will send you the form and even help you design the brick, if you wish. And take a few minutes to sit in the meditation area of the walkway...it's a lovely spot!



Reflections From Rabbi Larry Karol on “Witness: Lessons from Elie Wiesel’s Classroom”, by Ariel Burger.

Editor’s Note: This article was written for Jewish Book Month but is still very relevant

One of the most impactful Jewish books I have read in the last several years was written by Elie Wiesel’s teaching assistant at Boston University, Ariel Burger. In his book, WITNESS: LESSONS FROM ELIE WIESEL’S CLASSROOM, Burger offered readers an opportunity to enter into the presence of Wiesel as a moral guide and spiritual mentor.

In one of my favorite passages in this book, Wiesel explained to his students how we can approach each other with respect and even empathy: “To be human is to share a common origin. And if we share a common origin, our destinies are entwined. What happens to me will eventually happen to you; what happened to my people is a foreshadowing of what will threaten the world. Auschwitz led to Hiroshima and who knows what else? Therefore the most important biblical commandment is *Lo taamod al dam réakha*, ‘Thou shall not stand idly by the shedding of the blood of thy fellow human being.’ The word *réakha*, ‘fellow human being’—is universal. Anyone who is suffering, anyone who is threatened becomes your responsibility. If you can feel this and act with even a little bit more humanity, more sensitivity, as a result, that is the beginning. It is not the end—I do not know how to end hatred, I truly wish I did—but recognizing our shared humanity is a good beginning.”

I attended a session at the Union for Reform Judaism biennial in December, 2019, at which Ariel Burger spoke about his book. Two statements he made to summarize Wiesel’s message have stuck with me. “Tragedy does not define us; our response to tragedy defines us.”

“Listening to the witness makes you a witness.”

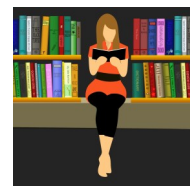
Like Wiesel, we need to be witnesses against hatred, and for humanity, decency, empathy, and hope.

“Virtual” Short Story Series Continues

During these challenging times, you are invited to join us for the “fall semester” of our ongoing Temple Beth-El “virtual” Jewish short story discussion series. We have two separate groups that meet via Zoom on Mondays and Tuesdays at 11 a.m. We are reading the short stories of Jewish authors, past and present. Since many of our authors’ stories are available on-line, there is no need for you to purchase a book. I send the assigned stories via email directly to you. The fee for the current series is \$18 which goes to the temple’s Adult Education programs. (Checks should be made out to Temple Beth-El and the memo line should indicate “short story group.”) If reading great fiction and spending time with friends and fellow fiction lovers for lively conversation sounds good, just email me at jar529@gmail.com or call me at 640-3292. Hope to hear from you. — Jim Rosenthal



BOOK TALK



I received such a great response last month when I asked for your favorite books that I couldn’t fit them all in. So, here is the first “Book Talk.” Send me your Jewish book recommendations at cambrien73@gmail.com and I will highlight a few each month.

Recommended by Marlene Benz:

“Does God Have a BigToe? Stories About Stories in the Bible” By Marc Gellman and Oscar de Mejo.

“The Gifts of the Jews — How A Tribe of Desert Nomads Changed the Way Everyone Thinks and Feels” By Thomas Cahill

“Jacobs Ladder — Wisdom for the Heart’s Ascent” By Noah Ben Shea



Jewish Federation®
OF GREATER EL PASO

As TBE’s new community liaison to the Jewish Federation of Greater El Paso. I am encouraging Temple members to consider writing a grant to benefit the Temple and its members. The grant cycle begins July 1, 2021 to June 30, 2022 and funds may only be used for programs that fall within this time frame.

Grants can be written for new programming, for program expansion, for providing core human services, and/or increasing Jewish engagement. The Federation in the past has helped TBE bring authors, singers and currently is helping with funding for our student Rabbi. So if you have some ideas that will help TBE grow culturally, educationally and Jewishly, go to the Federation website, www.jewishelpaso.org read the requirements, bring your ideas to the Board for approval and start writing! Applications are due by **Friday, January 15, 2021** at noon.

In case you have missed the many activities available through the Federation, that same website will amaze you with the events available to all of us... from food delivered to your door, scholarships to Jewish camps for children, the virtual Jewish film festival, and much more. So give it a look!

I will be attending my first community liaison meeting on December 3rd, and will send out information to everyone about what’s happening at Federation and how we can be involved. There are some exciting activities coming up so please open my emails. Thanks!

Alison Mann



Editor's Corner

As you may or may not know, one of the hats I wear at Temple Beth-El is Religious School teacher. One of the areas that I am focusing on this year is the Torah. We are using a truly excellent textbook called "The Explorer's Bible , Volume 1," by Dina Maiben from Behrman House Publishers. What I like most about the text, is that it asks questions of the students about what the stories mean and what they can teach us. Using these stories, we have been compiling a document entitled "Jewish values from the Bible (or how to be a mensch)". Since we have only read five stories so far (through the tale of the tower of Babel), this list is far from complete. Here is some of what we have so far:

- Take care of the Earth
- Follow the rules (when they are just)
- Take responsibility for our own actions
- Take care of our family
- Take care of friends
- Take care of others in general

Another theme that I have noticed but have not yet brought up to my students is that G-d often punished our ancestors by sending them away from their home and community. Adam and Eve eat from the tree of Knowledge and are sent out of Eden. Cain kills his brother and is condemned to be a wanderer. The builders of the tower of Babel are sent all over the earth. In the eyes of the Torah, being sent away from home and each other is a punishment of great magnitude.

This is something that I think all of us instinctively know. As people who have sought out a Temple community, we know that we are much happier and stronger together. Thank you all for being part of my life. You have helped me weather the considerable storms of life and have been there to celebrate my simchas.

May we be blessed to share our laughter and our tears together for many years to come.

With great gratitude,

Beth Tierney

Camp Hope Christmas Breakfast



A very altered holiday season is upon us, and we have all changed our daily lives to accommodate the new requirements. So there will also be changes for Temple Beth-El's Annual Christmas Day Breakfast at Camp Hope. Instead of our usual gathering with Camp Hope residents as we enjoy a hot meal, we'll be cooking those same meals at the Camp and then delivering them as takeout meals to Camp Hope and to the residents of the Gospel Rescue Mission. We're still in the process of working out the details, but one is certain: instead of asking people to purchase what we need, we're asking for financial donations so that we can place an order at Shamrock Foods. That means less personal contact and the ability to order exactly what we need without worrying about supply chain issues. We appreciate all the "in person" volunteers we've had in the past but this year due to COVID-19 the organizing committee has committed to doing the cooking and we are not asking for other volunteers so that we can keep the numbers to a minimum. We'll be serving eggs, pancakes, sausage, and mandarins. There won't be any coffee or sweets, which will be missed, but are hard to serve securely. Stay tuned for exact details. Let's hope that next year we can return to our regular breakfast.

Donations can be sent to:

Susan Fitzgerald
4003 Shadow Mountain Road
Las Cruces, NM 88011
sussanfitzgerald@hotmail.com

575-405-1739

Please make out checks to Temple Beth-El and put Camp Hope in the memo line.



TBE's BEST FRIEND

As the current President of the Jewish Federation of Greater El Paso (JFGEP), I'm writing this article to explain our relationship with the Federation, highlight some of the ways Temple Beth-El has already benefited from this relationship, and promote the ongoing programs and services the federation offers to the Temple Beth-El congregation.

There are 146 Jewish Federations throughout the United States, all under the auspices of the JFNA - Jewish Federations of North America (including Canada). The Jewish Federation of Greater El Paso has eleven partners. These include the Jewish Community Foundation, the Jewish War Veterans, the El Paso Holocaust Museum, the J-Center for Early Learning, the Cherry Hill School, Hadassah, and the five Jewish religious institutions in El Paso and Las Cruces. The Jewish Federation of Greater El Paso has an office on Mesa St., an Executive director, Robert French, staff members and a multi-million dollar budget.

I think you will agree that the Federation association has been most beneficial for our Temple. For example, in July, TBE received \$5000 from the Jewish Community Foundation specifically for expenses associated with security needs. Thanks to Joanne Turnbull's grant writing effort, the Federation awarded a \$20,000 grant to TBE that has enabled us to secure a one year commitment from HUC Student Rabbi Sofia Zway to lead services, teach in the religious school, provide adult education opportunities, and serve the community in other ways for two weekends each month this fiscal year. This year, due to Covid-19, the Federation board of directors is allowing a one-time deviation from its grant requirements so that grant funds may be used for other purposes if needed by the community. Temple Beth El received half of the grant funds in August (\$10,000) and will receive the other half in January (\$10,000). These funds will continue to support Student Rabbi Sofia through May and other temple needs during this time of transition.

Soon, it will once again be time to consider submitting a grant proposal for 2021-2022, and I hope you give serious thought to worthwhile Temple projects that require financial support. Up to \$50,000 may be granted to one institution. The JFed website (jewishelpaso.org) provides all the details and guidance for grant writing and submission.

But that is not all. The Federation issues a weekly email publicizing our programs for young and old alike. For example, the Borderland Cafe Europa program for seniors 65+ has now been enjoyed by a few Las Cruces seniors in addition to the El Paso regulars. I encourage other seniors to register for this gratis, twice monthly "lunch & presentation" (lunch is delivered from Corner Bakery). Another opportunity not to be missed is the Campership program for TBE youth for next summer with stipends of \$2000 for first time campers. There are many more Federation offerings, so please avail yourselves of them, especially now during these times of pandemic and uncertainty. Our office will assist you should you experience technical difficulties.

It has been assumed that I am the representative and liaison between our Temple and the Federation. That cannot be the case, since as president I advocate for all partners within the Federation as mentioned above. Bill Stein, the other TBE congregant and Federation board member is also the Secretary of the Board of Directors and a Granting Committee member. To fill this role, TBE needs a proactive, dynamic liaison to assure a place at the table, to represent the Temple, to add activities to the Community Calendar, to publicize TBE's programs and to consistently make the congregation aware of the Federation's offerings. **I am pleased to report that we have found such a person in Alison Mann. She will be attending the Community Leaders Zoom calls and provide the necessary connection between the Federation and the temple for maximum benefit to our shul.**

For the time being, as we must use Zoom calls to remain connected, it is paramount that no one of our mishpocha feels alone and neglected. The Federation stands by its partners, with financial and counseling assistance. We are here for you. Please connect with us.

Be well and be glad for we are G-d's people.

Monika Kimball

President, Jewish Federation of Greater El Paso

Continued from Page 6

alcohol or drugs in an attempt to drown your stress. (The problems, now compounded, will be there afterward.) Above all, remember we're all in this crazy situation together. Temple Beth-El's weekly services and study sessions (on Zoom) may be one way to reconnect with community and friends. If you are unsure of how to use Zoom, reach out to TBE Zoom-Master, Steven Haydu, by phone at 575-921-1304 or by email at secretary@tbelc.org. (Other video chat platforms include "Google Meet" and "Skype.")

What if you're not facing the above dire situations, but you're stressed by the uncertainties and the loss of familiar activities due to the virus?

Take advantage of opportunities afforded by the virus to get back in touch with loved ones and long-lost friends. Explore or reclaim an interest or hobby that's doable from home. Get started with a long-neglected task. Sometimes it's hard to get started when you're feeling down, but start it anyway! Arrange to watch the same movie or read the same book as a friend or family member who shares the same tastes. Eat right, get enough sleep, and if you're able, make sure to get regular exercise, especially outdoors.

When will this be over?

Keep in mind that pandemics always end. That said, it's probably better to take one day at a time, be grateful for what you still have, and let the day surprise you when an effective and widely available vaccine finally arrives.

For more information, Google: "CDC managing stress." Some ideas:

- **Nature.** Spending time in nature improves mood and decreases tension.
- **Gratitude.** A simple gratitude practice, such as reviewing the day for three good things that happened, increases resilience.
- **Remembering.** Physical absence does not end a relationship. An effective way to manage grief is to maintain a sense of connection with the person who now resides in memory.

We may not realize how Covid is affecting us. We can take advantage of certain practices that make it easier to live with grief. And as we learn to live with grief, we may come to appreciate what we have taken for granted, become more aware of who we are and want to be, and become more deeply connected with others.

-Joanne Turnbull

Celebrating our Simchas

The Temple Beth-El Mitzvah Team sends best wishes to these members celebrating birthdays this month:

Karen Currier
John France
Aaron Hyman
Debbie Levy
Ron Pierce
Beth Tierney
Jamie Tierney

The Temple Beth-El Mitzvah Team sends best wishes to these members celebrating anniversaries this month:
There are no anniversaries listed for this month.

We would love to have more names in these lists. If you would like to have us acknowledge your occasion in the future please send birth month, anniversary month, and the year you joined the temple to Luke Duddridge at LCDuddridge@hotmail.com.

If you follow the example below it would be helpful:

Sam Adams Born July, Married March, Joined 2015

Please note that we are not collecting dates, just the months.

Temple Beth-El Board of Trustees Meeting Summary- November 19, 2020

- Our bank balance is approximately \$30,000. Michael Mandel pointed out that the income we receive from dues is not equal from month to month. This means that if we take in \$60,000 in the first quarter, that does not mean will bring in that much in each subsequent quarter.
- Religious Practices Committee (RPC) report by Cherri Hudson-Brown. Rabbi Barry Leff will lead the service on Friday November 27th. Rabbi Leff has retired to Las Cruces, and is interested doing some Rabbi work for the Temple. Student Rabbi Sofia Zway will do the first and third Friday service, and Rabbi Karol will lead a Shabbat/Hanukah service on December 11th. Cherri will also reach out to the assistant rabbis in El Paso. Cherri also expressed the importance of finding a rabbi that is a good fit for our congregation.
- Sisterhood report by Lynn Zeemont. There are 37 currently paid members, they are reaching out to others regarding dues. Also, Lynn is working on getting an art professor in to do a program for the Sisterhood, or the entire congregation. The Sisterhood receives a newsletter from the Women of Reform Judaism that will be emailed on to all the Sisterhood members.
- Religious school report by Pearie Bruder. The religious school manages itself independently of the Temple. Planning for the religious school and its curriculum is established during the summer.
- Transition Report by Martha Roditti. We had a great discussion last Sunday about the viability of a Rabbi search this year. There were 48 participants. The reports of all three focus groups will appear in the monthly Adelantes. The board agreed with the findings of the focus group and will hold off on doing a rabbi search this December, and develop a plan for the future, in preparation for finding a new rabbi.
- The communication committee still needs some help with the temple social media presence. Pearie suggested asking the temple youth to get involved

with keeping us up-to-date on social media.

- There has been a committee of five individuals established to review the temple constitution and bylaws.
- We welcome Jerry & Jody Nachison as new members of TBE.

Temple Beth-El Mitzvah Team

The Mitzvah Team has identified the following tasks that it would like to perform and support with the help of Temple volunteers (please let us know if you can assist us):

- Develop a phone tree and other ways to reach out to members.
- Support the Rabbi and the Religious Practices Committee in providing special arrangements for shiv'ah minyans.
- Visit homebound and hospitalized members and members living in nursing homes, assisted living facilities, and hospice.
- Provide transportation to worship services and Temple events, medical appointments, and errands.
- Celebrate simchas (life's joyous moments).

Please contact:

- Alison Mann—575-680-0207
Alisonmd4@gmail.com
- Luke Duddridge—727-204-6086
LCDuddridge@hotmail.com
- David Decker—575-556-4056
deckerdavid28@gmail.com

If you are aware of any members in need of the services listed above, please let us know!

Donations through November 20, 2020

General Operating Fund:

Nina Rothman, in memory of Irv Rothman
Dee Cook, in memory of David Edelstein
Sharon and Peter Dorfman, in memory of Allen M Brooks
Lissa Gardner (friend of Barbara Mandel), thanks for yoga with Gillian
Simy and Dan Allan, in memory of Evelyn Benowitz
Bryan and Lisa McCuller, in memory of Ruth Ann Sugarman
Libby and Hill Britton, in memory of Barney and Ruth Ann Sugarman

Social Action Fund:

Shelly and Jerry Silverman, in memory of David Silverman and Samuel Goldman
Bryan and Lisa McCuller, in memory of Joseph Bell

Temple Beth-El Religious School Fund:

Sue Brown, in memory of Emily Cohen
Cherri and Jeff Brown, in memory of Ruth Ann Sugarman

Temple Beth-El Youth Fund:

Judd Singer, in honor of Lilian F Singer and in memory of Mac M Singer
Bryan McCuller, in memory of Gary Metzger

Frances Williams Library Fund:

Frances Williams, in honor of Auszel L Williams

Biblical Garden Fund:

Shelly and Jerry Silverman, in memory of Judy Mann
Gerie Muchnikoff, in memory of Leo Bienstock
Bryan and Lisa McCuller, in memory of Arlene Metzger Jerome
Alison and Gary Mann, in memory of Judith Mann

Given changes to the standard deduction limits, we will not be providing 2020 contribution statements for tax purposes. If you would like a statement, please contact the temple treasurer Michael Mandel to request one.

TEMPLE FUNDS

Donations are gratefully accepted for the following:
General Operating Fund—For the day-to-day operation of TBE.
Biblical Garden Fund—To provide the infrastructure for biblical plants and trees, and bricks in the fountain meditation area and on the brick walkway.
Rabbi Larry and Rhonda Karol Campership Fund—Providing scholarships for Temple students to attend Jewish summer camp programs.
The Mitzvah Team Fund—to assist this voluntary team of Temple Beth-El members that, upon request and dependent upon availability, will provide non emergency support service to members of the temple.
Social Action Fund—For projects that benefit our community and Las Cruces and Southern New Mexico.
Irving Batkin Memorial Scholarship Fund—To broadly support Jewish education, based on merit or need, through participation in the TBE Religious School, camperships, and/or pursuit of Jewish collegiate studies or rabbinical studies.
Frances Williams Library Fund—To provide books and infrastructure for the TBE library.
Rabbi Gerald M. Kane Fund—Provides funds to help further adult education and cultural programming at TBE.
Temple Beth-El Religious School Fund—Supports the regular and special programming planned by faculty, students and the Religious School Committee.
Temple Beth-El Youth Fund—Support for Youth activities at TBE.

Periodically the temple may list short-term projects or needs. Contributions that do not specify a project or fund will be added to the General Operating Fund. If you have a question or wish to contribute to a project not listed here, please contact our Temple Beth-El Treasurer, Michael Mandel.

“Have you considered a bequest to Temple Beth-El?”

An important part of our future is represented by bequests made by members.

Thoughtful bequests enable Temple Beth-El to retain a future of Jewish life for generations to come. From funding our Rabbi to scholarships at our religious school, your generous gift maintains our financial health.

A simple codicil can be added to your existing will, if you wish to make a bequest, such as:

“I give and bequest to Temple Beth-El, located in Las Cruces, New Mexico, the sum of \$ ____ [or ____ percentage of my estate as finally determined for federal estate tax purposes].

A will or codicil should be prepared by an attorney. Please call the Temple office at (575) 524-3380 to discuss including Temple Beth-El in your estate.



Temple Beth-El is part of Amazon Smile, which offers members of Temple Beth-El an opportunity to participate in Smile Amazon and donates 0.05% of all purchases back to the Temple. The process is very simple – go to

www.smile.amazon.com. You will

be required to enter the charity to which you wish to donate – just type in Temple Beth-El, Las Cruces in the charity box and this will set the Temple as your charity of choice. Then just shop – pretty easy and since many people today shop online via Amazon, it becomes a win-win situation for all.

Visit the Temple Beth-El Website—

www.tbhelc.org

for in-depth information about Temple and its programming and updates on current Temple events

Temple Beth-El is on Facebook!

<http://www.facebook.com/pages/Temple-Beth-El/115816285166004>

(It is open for all to see!)

If you are on Facebook already, find our page, click “Like” and join us in our Facebook community!

Adelante Submissions:

During this time of social distancing due to COVID-19, let us not become distant from each other. Speak with fellow congregants, friends and family. Send me your pictures of family Shabbat, musings, illustrations, etc. I will share as many as space allows in next month's Adelante.

The deadline for turning in articles, items and photos for the January 2021 Adelante is December 20, 2020.

Late items may not be included. Please do your best to keep to that schedule to facilitate a timely completion of the Adelante! All content can be e-mailed to Beth Tierney at cambrien73@gmail.com

BOARD OF TRUSTEES 2020-2021

President-Cheryl Decker

Vice-President-Lynn Zeemont

Secretary– Steve Haydu

Treasurer– Michael Mandel

Barbara Berger Pearie Bruder Marieka Brown

Bryan McCuller Martha Roditti

Nan Rubin Joanne Turnbull

Jeff Lewis (Mensch Club) Dee Cook (Sisterhood)



**Tanah
Hemingway**

(575) 524-4329

most nights

P.O Box 16318

Las Cruces

NM 88004

Editing:

Books, scientific papers, theses, dissertations

Technical documents of all sorts.

(for accuracy, continuity, organization, style
grammar, readability, supportability, etc.)



Ron Bruder

ASSOCIATE BROKER

ronbruder@topproducer.com

Cell: 575-312-7330

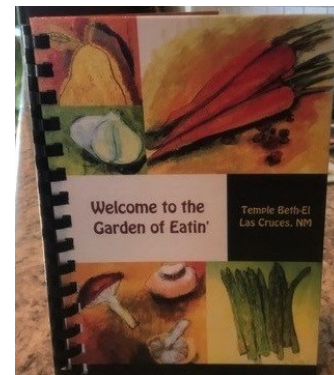
Office: 575-522-3698

Steinborn & Associates
Real Estate

Temple Beth-El Cookbook

“Welcome to the Garden of Eatin’”

\$15, Cash or Check



Contact Rose Jacobs for copies

arejay11@icloud.com or

512 680-2783

DECEMBER 2020

ALL EVENTS BY ZOOM

Sun	Mon	Tue	Wed	Thu	Fri	Sat
		Kislev 15 1 Short Story group 11:00 am	Kislev 16 2 Wednesday Morning Breakfast 9:00 am Tanakh Study 10:15am	Kislev 17 3	Kislev 18 4 Shabbat Service 6:30 pm with Rabbi Sofia	Kislev 19 5 Talmud Study 9:00 am Shabbat morning Service 10:15 am Torah Study 11:15 am
Kislev 20 6 Religious School 9:30 am "Yours and Mine..." Talmud Class w/ Rabbi Sofia 12:00 am Roz Sugarman Memorial 1:30 pm Focus Group 3 pm	Kislev 21 7 Short Story group 11:00 am	Kislev 22 8 Short Story group 11:00 am	Kislev 23 9 Wednesday Morning Breakfast 9:00 am Tanakh Study 10:15am	Kislev 24 10 <i>First Night of Chanukah</i>	Kislev 25 11 Chanukah Celebration and Shabbat Service 6:30 pm with Rabbi Karol	Kislev 26 12 Talmud Study 9:00 am Torah Study with Rabbi Karol 11:00 am
Kislev 27 13 Religious School 9:30 am	Kislev 28 14 Short Story group 11:00 am	Kislev 29 15 Short Story group 11:00 am	Tevet 1 16 Wednesday Morning Breakfast 9:00 am Tanakh Study 10:15am	Tevet 2 17 Board Meeting 6:00 pm <i>Last Night of Chanukah</i>	Tevet 3 18 Shabbat Service 6:30 pm with Rabbi Sofia	Tevet 4 19 Talmud Study 9:00 am Shabbat morning Service 10:15 am Torah Study 11:15 am
Tevet 5 20 Religious School 9:30 am	Tevet 6 21 Short Story group 11:00 am	Tevet 7 22 Short Story group 11:00 am	Tevet 8 23 Wednesday Morning Breakfast 9:00 am Tanakh Study 10:15am	Tevet 9 24	Tevet 10 25 Lay-Led Shabbat Service 6:30 pm	Tevet 11 26 Talmud Study 9:00 am Torah Study with Rabbi Karol 11:00 am
Tevet 12 27 NO RELIGIOUS SCHOOL, Winter Break	Tevet 13 28 Short Story group 11:00 am	Tevet 14 29 Short Story group 11:00 am	Tevet 15 30 Wednesday Morning Breakfast 9:00 am Tanakh Study 10:15am	Tevet 16 31		

3980 Sonoma Springs Avenue
Las Cruces, NM 88011

Phone: 575.524.3380
Fax: 575.521.8111

President:
Cheryl Decker

Student Rabbi: Sofia Zway

Rabbi Emeritus:
Lawrence P. Karol

The Temple Beth-El Newsletter is produced regularly at Las Cruces, New Mexico. Editor: Beth Tierney. Copy Editors: James Rosenthal, Tanah Hemingway, Larry Karol. Circulation: Cheryl Decker. We welcome Adelante sponsorships by or for Temple members and non-members. Sponsorships can be mailed to the Temple; receipts are provided upon request. We reserve the right to edit all sponsorships. Non-member sponsorships (with no ad) are \$25/year. Annual sponsorship rates are as follows: 2x3 business card \$150; Quarter page \$300; Half page \$600. For information about sponsorships, please contact the Temple Office.

**Temple Beth-El and “Adelante” are on the web at
www.tbclc.org**

December, 2020



**Temple Beth-El
3980 Sonoma Springs Avenue
Las Cruces, NM 88011**