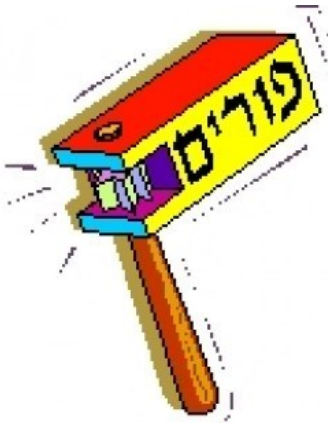


# Adelante!

A Monthly Publication for Temple Beth-El,  
Las Cruces, New Mexico



FEBRUARY 2021 (SHEVAT-ADAR 5781)



## PURIM 5781

Thursday, February 25 at  
5:30 (Virtual) Purim  
Carnival led by the TBE  
Youth Group (BETY)

6:30 Virtual Purim songs, Megillah  
excerpts, and Purimshpiel.

This year will necessitate some extra  
creativity to adapt to the pandemic,  
but don't worry, Haman (booooo!)  
will still be plotting against us  
anyway! Stay tuned for  
further details!



**Inside:** Purim Message from Rabbi Sofia Zway (Pg. 3)

Memories of past Purim Celebrations (Pg. 7)

## Worship Schedule (Via Zoom)

You can also watch the Facebook livestream for holiday and Shabbat services on this page:

<https://www.facebook.com/pages/category/Synagogue/Temple-Beth-El-115816285166004/>

(if you do not have a Facebook profile now, and it asks you to join when you go to the page, click "Not Now" and that box will disappear).

If you do not have a siddur at home, you can follow along in the Mishkan T'filah for Shabbat flipbook provided by the Central Conference of American Rabbis at this link

<https://www.ccarnet.org/publications/mishkan-tfilah-for-shabbat/>

Zoom invites for Torah Study on Saturday mornings, all Services, and any text to follow, will be sent out weekly.

### Wednesdays–

**Tanakh study 10:15 am with Rabbi (Emeritus) Larry Karol**

Contact Rabbi Karol ([rablpkarol@gmail.com](mailto:rablpkarol@gmail.com)) to attend

### Saturdays–

**Talmud Study 9:00 AM**

Contact Bryan McCuller ([mccullerbryan@gmail.com](mailto:mccullerbryan@gmail.com)) to attend

## Friday, February 5

6:30 pm Family Service for all ages—  
*coordinated by Beth Tierney*

## Saturday, February 6

9:00 am Talmud Study

11:00 am Torah Study *led by Rabbi Larry Karol*

Parshat Yitro

Exodus 18:1-20:23

## Friday, February 12

6:30 pm Shabbat Evening Service—  
*led by Rabbi Sofia Zway*

## Saturday, February 13

9:00 am Talmud Study

10:15 am Shabbat Morning Services

11:15 am Torah Study *led by Rabbi Sofia Zway*

Parshat Mishpatim

Exodus 21:1– 24:18

## Friday, February 19

6:30 pm Shabbat Evening Service -  
*lay-led*

## Saturday, February 20

9:00 am Talmud Study

11:00 am Torah Study *led by Rabbi Larry Karol*

Parshat Terumah

Exodus 25:17-27:19

## Thursday, February 25

6:30 Megillah reading, Purimshpeil  
and songs for Purim

## Friday, February 26

6:30 pm Shabbat Evening Service—  
*led by Rabbi Sofia Zway*

## Saturday, February 27

9:00 am Talmud Study

10:15 am Shabbat Morning Services

11:15 am Torah Study *led by Rabbi Sofia Zway*

Parshat Tetzaveh

Exodus 27:20-30:10



## **The Joy of Purim**

*Student Rabbi Sofia Zway*

This month we will celebrate Purim, which marks one Jewish year since the Corona virus shut the world down. It's difficult to believe that we have been living in this new reality for almost 12 months. Purim, like every other

holiday we've celebrated this year, will feel different. We will miss the in-person frivolity and the costumes, the hamentaschen and noise, but Purim offers us a great opportunity this year to reconnect with those we love through the four mitzvot of Purim.

**Reading the Megillah:**

The obligation to hear the story of Purim brings us together as a community and reminds us of the importance of telling stories. Every year we read the story again, each year able to hear with new ears and to listen for new lessons. What will we learn from the story of Esther this year?

**Mishloach Manot:**

The second mitzvah of Purim, mishloach manot, translates to 'sending gifts.' It is customary to send gifts of food to friends and family to ensure that everyone has the means to be happy and to enjoy the festival of Purim. What gifts will you share with the community this year?

**Seudah - The Festival Meal:**

"They tried to kill us. We won. Let's eat." The festival of Purim would be incomplete without a festive meal. This year, of course, we feel sadness not to be sharing a meal with friends and family, but perhaps we are presented with the opportunity to try a new recipe or spoil ourselves with our favourite meal.

**Matanot L'Evyonim:**

At the root of our tradition lies a concern for those who are less fortunate. On Purim, it is a mitzvah to give gifts to those experiencing poverty, thereby honouring Esther and Mordechai's legacy of saving the Jewish people. Fulfilling the mitzvah can happen in many different ways - how will you offer support to those in need this year?

The rabbis in the Babylonian Talmud teach us that when the month of Adar enters, we increase in joy. I hope that the four mitzvot of Purim will offer us an opportunity to rediscover the joy of Adar.

Chag Purim Sameach!

## **Adult Education Series** **Led by Rabbi Sofia Zway** **Sundays beginning Dec 6th, 12-1pm**

### **Yours and Mine - is Hers: Stories of Women in the Talmud**

In this four-part adult education course, we will study the stories of four named women in the Talmud. Each class will focus on a different woman. Together, we will seek to uncover who the heroes of these stories are. How are they represented in the text? What can these stories - presumably written from the perspective of male rabbis - teach us about women's lives during Talmudic times? What do these stories teach us about women's relationships with Judaism and with their husbands? What do these stories elucidate for us about the way the rabbis thought about women? As we 'reclaim' these stories from the boys' club that wrote them, we will breathe new life and new perspective into the stories of these women as we ask what lessons we can learn from them to apply in our lives and in our own times. There will be one class each month, and the text for each class will be provided ahead of time.

**Sunday February 14- 12:00-1:00pm- Cheruta, Wife of Chiya bar Ashi**

**March -TBA**

## **Wednesday Morning Breakfast**

The Wednesday Morning Breakfast has resumed in Zoom format. The program will begin 9 am weekly. Phil Alkon is the organizer and should be contacted at [philipalkon@gmail.com](mailto:philipalkon@gmail.com) or 575-524-6945 with general questions or recommendations regarding future speakers.

Patrick Quinn is assisting Phil with developing and maintaining the mailing list and with Zoom access. If you have questions about either of those issues please contact Patrick at [patrick.kaye.quinn@gmail.com](mailto:patrick.kaye.quinn@gmail.com) or 575-522-4692.



© Can Stock Photo

**FEBRUARY 2021 (SHEVAT-ADAR 5781)****Yahrzeits-January 29, 2021 through March 5, 2021**

(Listings include the name of the loved one on the yahrzeit list and the name of the congregant or congregants remembering that loved one -asterisks indicate loved ones remembered with memorial plaques)

**Read on Friday, February 5**

Marion Brown (Marieka Brown)  
 Alexander Edwards\* (Peter Edwards)  
 Lillie Friedman (Stefani Singer)  
 Wade W. Gardner (Brenda Parrish)  
 Irving Glater (Leslie Glater)  
 Raphael Gordon (David and Robert Zeemont)  
 Samuel Klein\* (Melvin "Sonny" Klein)  
 Benjamin Lampert\* (Gabriel Lampert)  
 Pauline Lemelin (Stacey Hyman)  
 Alvin Phinick (Karen Currier)  
 Christine Radcliff\*  
 Dena Soloman (Tana Hemingway)  
 Dr. Edward Weiss (Diane Bass)  
 Milton Zeemont (David and Robert Zeemont)

**Read on Friday, February 12**

Shimson Alkon (Philip Alkon)  
 Shirley Backman (Judy Kirshner)  
 Henrietta Bruder\* (Murray Bruder)  
 George Cohen\* (Susan Brown, Marieka Brown)  
 Louis Druxman\*  
 Margaret Gantert (Susi Kolikant)  
 Hortense Heart (Nancy Bergman)  
 Rita Herman (Avis Lewis)  
 Bella Krushen\*  
 Yetta Resnick\* (Frances Williams)  
 Sonia Seigel\*  
 Dee Seton Barber\* (Julie Seton)  
 Reba Tapper (Dan Tapper)  
 Roxy Violin (Stefani Singer)  
 Charlotte Schwartz\*

**Read on Friday, February 19**

Joshua Mordechai Batkin\* (Mike Batkin)  
 Avraham Ben Isaac Ha Cohen (Tana Hemingway)

Ruth N. Brooks\* (Sharon Dorfman)  
 Cecilia Chotiner Lipsitz (Selma Ryave, Roslyn Richman)  
 Leonard Edwards\* (Peter Edwards)  
 Patricia Collier Ehlers (Lisa McCuller)  
 Alma Ruth Feil (Paul Feil)  
 Phyllis Friedman (Stefani Singer)  
 Beatrice Gibbs (Terri Sugarman)  
 Dori Gorsky\*  
 Norman Green (Selma Ryave, Rosalyn Richman)  
 Carl Isaacson (Louise Feldman-Baskey)  
 Frances Klein\* (Melvin "Sonny" Klein)  
 Itzhak Kolikant (Jacob Kolikant)  
 Trudy La Linde (Tan Hemingway)  
 Minnie Levicoff (Sue Mazer)  
 Charlotte Ray Mann (Gary Mann)  
 Stephanie S. Morgan\*  
 David Sicherman (Sally Sicherman)  
 Ruth Sicherman (Sally Sicherman)  
 Max Steinberg\* (Evelyn Bruder)  
 Storm Sauter Tarvin (Tana Hemingway)  
 William "Jack" Mayo (Lisa Weinbaum)  
 Dolly Zabin (Jeff Brown)  
 Dena Zakin (Tana Hemingway)

**Read on Friday, February 26**

Louis Bass\* (Harry Bass)  
 Earl Dorfman\* (Peter Dorfman)  
 Rachel Fox\*  
 Ida Katz\*  
 Jean Lemelin (Stacey Hyman)  
 Jack Lipschutz\* (Harry & Diane Bass)  
 Bertram Marks (Rhonda Karol)  
 Samuel Ryave (Rosalyn Richman, Selma Ryave)  
 Gayle Saeks (Jerald Silverman)  
 Isabelle Sazer (Tana Hemingway)  
 Sheldon Schoenbrun\*  
 Mieke Skigen\* (Michelle Skigen)  
 Joseph Wolfe\* (Martin Poel)



Continued from page 4

**Read on Friday, March 5**

Ralph Alkon (Philip Alkon)  
 Faye Berkson\* (Burt Berkson)  
 Betty Brankman (Sally Alkon)  
 Mollie Bruder\* (Murray Bruder, Ron Bruder)  
 Samuel Chapman (Diane Fleishman)  
 Warren E. Dudleston (Betsy Gubin)  
 Lawrence Friedman (Teddy Weinglass)  
 Rabbi Allan Langner (Bernice Langner)  
 Lena Lieberman\*  
 Harold W. Loudon (Cheryl Decker)  
 Robert Marcus (Steven Marcus)  
 Jacob Neidich\* (Ezra Neidich)  
 Anna Podolsky (Rosalyn Richman, Selma Ryave)  
 Harry Schechter  
 Edith Steinberg\* (Evelyn Bruder, Ron Bruder)  
 David A. Steinzig\*  
 Helen Troy (Marsha San Fillipo)

**Condolences to:**

Cherri Hudson-Brown and family on the death of her aunt, Pat Hudson, on Jan. 7 in Naperville, IL.

**May her memory be for blessing.**

In order to ensure that the name of your loved one will be recited during services, we have instituted the following practices:

- The Hebrew dates for each week's Yahrzeits are listed in each Adelante.
- Names are read on the Shabbat **following** the Yahrzeit, or on the day, if it falls on that Shabbat.
- Hebrew vs. conventional (Gregorian) calendar: The temple's tradition is to base the Yahrzeits list on the Hebrew calendar. Those who wish to have a name read on a Friday night close to the conventional (Gregorian) calendar date are asked to please email or call the Temple office a few days prior to the service.

\*Asterisks indicate that a loved one has been permanently memorialized with a plaque in the Temple sanctuary. If you are interested in acquiring a plaque for your loved one, contact the Temple office.



**Honor the memory of loved ones with a memorial plaque and mark celebrations and milestones (and also the memory of friends and family) by adding leaves to our Tree of Life.**



### **Bricks for the Biblical Garden and Brick Walkway**

**Please consider ordering one to mark that special occasion of your own or a loved one. Call Dee Cook or Alison Mann, and they will send you the form and even help you design the brick, if you wish. And take a few minutes to sit in the meditation area of the walkway...it's a lovely spot!**



### **Financial Assistance**

These are challenging times for all of us but Temple Beth-El is here to support you. If you are struggling to buy groceries, or pay rent, mortgage, or other bills, we have a large balance in the Rabbi's Discretionary Fund to assist our community members.

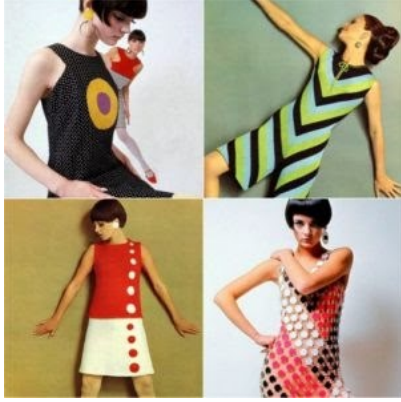
To request short term assistance, you can contact Temple President, Cheryl Decker at [doubledeckerohio@msn.com](mailto:doubledeckerohio@msn.com) or 575-640-9559. All requests will be held in the strictest personal confidence.

Thank you to all our donors who have made this assistance possible.

## Fashion Event#2: “Fashions from the 60’s to the Present.”

Well ladies, I think we can all say that we had an enjoyable afternoon listening and learning with Professor Kathleen Key as she presented part one of “120 Years of Fabulous

Fashions.” On February 7<sup>th</sup>, at 2 pm, Professor Key will be presenting part two, “Fashions from the 60’s to the Present.” We



will not have to endure the thoughts of girdles and corsets, more a remembrance of what we wore

during our more active fashion lives. If anyone would like to share their favorite drink during their early drinking days, please



do. Mine was a Black Russian, but I have grown into enjoying a Martini. For a future event, Professor Key has offered to do a lecture on Jewish artists – Camille Pissarro, Mark Chagall, Mark Rothko, and Helen Frankenthaler, just to name a few. So, please put this

event on your calendar and reminders and zoom links will be forthcoming.

-Lynn Zeemont, Sisterhood President

## Mensch Club Annual Eve

For the last two years the Mensch Club has hosted an event to honor our partners in life. The first year the event was held at a local restaurant. Unfortunately, last year due to Covid, the event was cancelled.

This year, the decision was made to have a Zoom event and the name of our event is, “Honor Your Partner,” whether that person is a relative or a close friend. Our event this year will be open to all TBE members. While this year’s event will not be as personal via Zoom, we have hope that next year we will be able to host an in-person event. The event will be on on Sunday, March 14th starting at 2:45PM .

Elliot Katz will introduce the event, followed by a prayer by Jim Rosenthal. Temple’s own, Amalia Zeitlin and her friends will serenade us with beautiful Jewish love songs. Following the music, we will toast each other followed by a closing thought.

The Temple Mensch Club is open to all men, and we are a very active club. We have attended baseball games in El Paso, the Holocaust Museum, the Sunspot Observatory, and other local sites of interest. Pre-Covid, we met once a month for breakfast and conversation at a local restaurant.

We honor our young men on the event of their Bar Mitzvah, and participate in temple fundraising events, such as the JFFF, annual rummage sale, and the Renaissance Faire. We meet once a month to discuss how we can assist temple in upcoming events, and the club president furnishes the donuts. The annual dues are \$20.00. Please consider joining, contact Jeff Lewis, President, or Luke Duddridge, Vice President.

David Decker, Mensch Club Treasurer



### Tikkun Olam Opportunities Giving to and volunteering at *Casa de Peregrinos & El Caldito*

Casa de Peregrinos provides staple foods to the needy, and El Caldito provides a meal 365 days a year to the hungry in our community. Both organizations are part of the Community of Hope located on the same campus at 999 W. Amador. There are common interests and goals and the food received is often shared between the two organizations in order to best utilize both perishable and non-perishable foods. There is also a need for wide-mouth glass bottles and containers and gently used clothing.

**This is a critical time for the organizations.** Due to the COVID-19 crisis, they have seen an increase in demand. At the same time, they have had a decrease in volunteers, particularly on weekends. In order to maintain social distancing, the El Caldito soup kitchen has switched to handing out meals to go.

For more information on current needs, questions, or to volunteer, contact Casa de Peregrinos (575-523-5542) and El Caldito (575-525-3831) directly.

## Jews and Star Trek



It's time for some diversion during the Covid-19 pandemic. A "Jews and Star Trek" group is being organized. You don't have to be Jewish to belong, but early discussions will be on the actors in the original Star Trek, William Shatner and Leonard Nimoy, who were Jewish, and Jewish values as shown through the various series and movies. Basically it's an excuse to talk about our favorite episodes, characters and the world we wish we had.

For more information, contact Rabbi Emeritus Larry Karol at [rablpkarol@gmail.com](mailto:rablpkarol@gmail.com) or Cherri Hudson-Brown at [cjudson@comcast.net](mailto:cjudson@comcast.net).

## PURIM THROUGH THE YEARS...



Purim 2020

Purim 2019



Purim 2018

Purim 2017



Purim 2016

**WHERE ARE WE NOW:  
A FINANCIAL COMPARISON OF PROFIT  
& LOSS STATEMENTS  
JULY 1<sup>ST</sup>, 2020 – JANUARY 18<sup>TH</sup>, 2021 COMPARED  
TO JULY 1<sup>ST</sup>, 2019 -JANUARY 18<sup>TH</sup>, 2020.**

Below is information regarding the financial status of Temple Beth El for the first six months of our fiscal year compared with the same period of the previous year. The information is broken down into three categories of income and expenses.

- As you can see, we have received \$94,663.00 in dues income with \$28,000.00 of pledged monies yet to be collected.
- Total remuneration for Rabbi Sofia for this period has been offset by the Federation grant and payments to Rabbi Emeritus Karol were out of the general account.
- Regarding donations, we are ahead of the previous year's numbers, but keep in mind that our budgeted amount is \$24,000.00 for the year.
- Our dues to the URJ have been reduced and less usage of office supplies have resulted in decreased administrative cost.
- Our Ways and Means income is limited due to the pandemic but due diligence by members of our congregation has kept our building costs in check.

We are happy to report that all previous reserve monies, approximately \$30,000.00, that were needed to cover operating costs in previous years have been returned to those accounts.

	July 20-Jan 21	July 19-Jan 20
<b>Dues Income</b>	<b>\$94,663.00</b>	<b>\$91,913.00</b>
<b>Rabbinic Costs</b>	<b>\$780.00</b>	<b>\$60,840.00</b>
<b>Donations income</b>	<b>\$13,231.00</b>	<b>\$10,104.00</b>
<b>Administration costs</b>	<b>\$12,222.00</b>	<b>\$15,410.00</b>
<b>Ways &amp; Means income</b>	<b>\$1,600.00</b>	<b>\$13,241.00</b>
<b>Building Costs</b>	<b>\$7,485.00</b>	<b>\$19,103.00</b>

After careful review, the Board of Trustees agrees that we should proceed to form a Rabbi search committee. The process would begin in December 2021 with the prospect of a Rabbi being employed by July 2022. This decision is contingent upon maintaining our current level of financial support in both the dues and donation categories. The prospect of Ways & Means

income is not positive at this time and will require creative thinking to supplement our revenue.

The board has agreed to set this goal of working towards having a religious leader for TBE. Now it is up to all of us as a congregation to financially support and spiritually support that goal.

**“Have you considered a bequest  
to Temple Beth-El?”**

An important part of our future is represented by bequests made by members.

Thoughtful bequests enable Temple Beth-El to retain a future of Jewish life for generations to come. From funding our Rabbi to scholarships at our religious school, your generous gift maintains our financial health.

A simple codicil can be added to your existing will, if you wish to make a bequest, such as:

***“I give and bequest to Temple Beth-El, located in Las Cruces, New Mexico, the sum of \$ \_\_\_\_\_  
[or \_\_\_\_\_ percentage of my estate as finally determined  
for federal estate tax purposes].***

A will or codicil should be prepared by an attorney.

Please call the Temple office at (575) 524-3380 to discuss including Temple Beth-El in your estate.

**“Virtual” Short Story Series Continues**

During these challenging times, you are invited to join us for the “spring semester” of our ongoing Temple Beth-El “virtual” Jewish short story discussion series. We have two separate groups that meet via Zoom on Mondays and Tuesdays at 11 a.m. We are reading the short stories of Jewish authors, past and present. Since many of our authors’ stories are available on-line, there is no need for you to purchase a book. I send the assigned stories via email directly to you. The fee for the current series is \$18 which goes to the temple’s Adult Education programs. (Checks should be made out to Temple Beth-El and the memo line should indicate “short story group.”) If reading great fiction and spending time with friends and fellow fiction lovers for lively conversation sounds good, just email me at [jar529@gmail.com](mailto:jar529@gmail.com) or call me at 640-3292. Hope to hear from you. —  
Jim Rosenthal





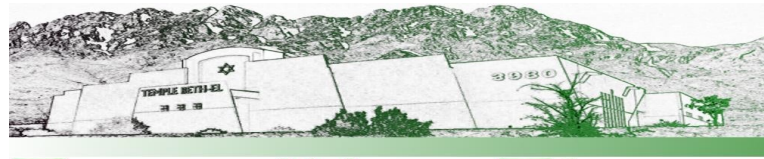


## Editor's Corner

I had a extremely hard time trying to decide what to make my article about this month. I considered filling the space with “Bernie in Mittens memes” but ultimately decided that there must be something more worthwhile. But Bernie and his mittens can remind us of something important. First, let’s talk about the mittens. Bernie’s iconic mittens were made by Jen Ellis, a teacher and friend of Bernie’s daughter-in-law who runs the daycare that Ellis’ daughter attends. Ellis gave the mittens to him two plus years ago with a note that said “I believe in you, I’ve always believed in you and I hope you run again.” They are made from repurposed wool sweaters and lined with fleece made from recycled plastic bottles. She was surprised and delighted to see him wearing them on the campaign trail. Bernie’s mittens and the Burton coat he wears (also from Vermont) can be seen as symbolic of Bernie himself, who has never quite fit the typical mold of American politics. In this way, he is a bit like the heroes of the Purim megillah. Our first hero is Mordechai. Mordechai refused to bow down to Haman (booo!!) because Jews only bow to G-d. This defiance and refusal to bend his beliefs to fit in landed him and all the other Jews of Shushan right in Haman’s crosshairs. The next hero is Esther, who took the very risky step of becoming the Queen of Persia in order to win the affection of the King and be in a position to save her people. By shedding her façade and revealing herself as a Jew she risked her life. Finally, let us consider Vashti, who refused to leave the banquet she was hosting for the women of Shusan to be paraded in front of King Ahasuerus and his drunken friends. Unfortunately, this act of being true to herself did not end well for Vashti and she was banished.

Standing up for one’s ideals is not always easy and does not always end well. It may cause an individual to lose one’s social standing, friends, and in some cases, one’s life. I cannot however completely condemn someone for acts of self-preservation. It is a natural inclination. We rightly see ourselves as having intrinsic value. It is also hard (though not always impossible) to make a change from completely outside the system or from the grave. However, as Jews, and indeed as members of the greater collective known as the human race, we must not forget our sense of right and wrong and sense of self. So I encourage all of you this season of Purim and always, to put on your metaphorical Bernie mittens and wear them with pride.

Chag Purim samayach,  
Beth Tierney



## Transition Times

### FEBRUARY PHASE 2 TRANSITION REPORT

- The Temple Beth-El Board of Trustees has given the go-ahead to apply to Hebrew Union College-Jewish Institute of Religion, Los Angeles for a student rabbi (preferably Sofia Zway) for the 2021-2022 academic year.
- Phase 2 begins on February 1, 2021 and ends December 1, 2021. A team of five has been formed to move Phase 2 forward to completion: Rebecca Berkson, Jeff Brown, Wendee Lorbeer, Joanne Turnbull, and Lynn Zeemont.
- The board has agreed to a search for a permanent rabbi if TBE has sufficient funds. The search would begin in December 2021 and the rabbi would be welcomed to our pulpit on July 1, 2022. Phase 3 of TBE’s transition starts with the rabbi search (December 2021).

During this Fall’s Discussion Groups, our congregation expressed a need to have a clear sense of who we are as a community and who we want to be. To address these, a series of focus groups will be conducted, beginning with:

- Sisterhood and Mensch Club
- Religious Education
- Religious Practices
- Youth Group
- Membership and Outreach
- Development (Ways & Means)

More groups may be added. The information will inform the search for our new rabbi and will also be submitted to the Board of Directors to develop a Strategic Plan for the Temple’s progress and future growth.

## FAMILY VIOLENCE IN THE TIME OF COVID-19

By Martha Roditti for Adelante, Temple Beth-El

We hear a lot about infection and death rates but little about family violence associated with Covid-19. The financial situation of many families has worsened because of the pandemic. Jobs, health insurance, and even homes have been lost, and these are all predictors of family violence. According to recent research:

- 2.3 million children have fallen into poverty since June 2020.
- One in seven households with children do not have enough to eat.
- One in eight families with children lack health insurance.
- One in five households with children fear being unable to pay their rent or mortgage.

### Pandemic Stress and Family Violence

Family violence refers to violence between intimate partners and between the partners and their children. Intimate partner violence includes sexual and physical violence and stalking. According to the Centers for Disease Control, approximately one in four women and nearly one in ten men experience intimate partner violence during their lifetime. Stay-at-home orders may cause these numbers to rise dramatically because victims are forced to remain in dangerous situations.

The consequences of the pandemic include increased poverty, reduced mobility, increased homelessness or increased toxic, overcrowded households. This has led to depression and helplessness among many adults and their children. Childcare options have been drastically reduced meaning that parents may be unable to work due to childcare responsibilities or, if they do attempt to work, their children may be inadequately supervised, often by older siblings. Working parents are not usually at home 24/7, much less homeschooling their children. Adding to this is the loss of social support provided by friends and family. Because of closure of pubs, bars and hotels parents are drinking and using drugs more at home in order to manage stress and tension. All of this is a violent situation waiting to happen.

Given that child maltreatment is an incident or series of events that occur in relative isolation, the COVID-19 crisis has diminished many children's worlds to themselves and their caregivers, amid strained family dynamics. Child advocates worry that pandemic-related uncertainty could cause child maltreatment to be worse than in the 2008 Great Recession when several studies documented increased head trauma, especially among infants and children under five.

Special needs children are especially at risk because disruption of daily routines may cause them to be frustrated and short-tempered, thus adding extra stress to an already vulnerable home environment.

Social isolation prevents detection of child maltreatment by people outside the family and prevents parents from observing models of relationships with children that are not based on violence. School closures have caused children to lose an important safety net: The vast majority of reports to authorities of suspected maltreatment come from professionals who have contact with children as part of their jobs, especially teachers, but also day care providers, counselors, coaches, and clergy (Teachers and school personnel are legally mandated to report). These days, frontline healthcare professionals, such as doctors and nurses, are the few sets of eyes, and thus the only lifeline for an abused child. Across the nation, the pattern is the same—reports of suspected abuse are down 40% to 60%, but hospitals are seeing more serious incidents of child abuse.

### What Can Be Done?

- Let children and caring adults know that reaching for help, such as calling the child abuse hot line, doesn't mean children will be taken away. Children are removed only as the last resort, and preventative steps make that less likely.
- Teachers need to learn to spot signs of abuse or neglect during distance learning education..
- Physicians and nurses need to be mindful of abuse in every encounter they have with a child.
- The public can be taught how to spot potential abuse and how to report it through social media and ongoing public service announcements.
- Small Mitzvot can make someone's life easier (such as helping a busy parent by taking them dinner or cookies). Reach out now to families that might be struggling.
- New Mexico is home to our country's poorest children. Local legislators can be made aware that voters are watching what they do about poverty. Voters insist that family safety nets can be expanded by increasing welfare, family resource centers, and mental health care.
- **Report suspected child abuse or neglect by texting #SAFE (#7233) from a cell or calling 1-855-333-SAFE (7233).**

## Temple Beth-El Board of Trustees Meeting Summary- January 21, 2021

- Guards were hired over the inaugural weekend to drive through the temple parking lot a few times from 8pm to 5am. Dave also pulled in any trash cans or containers that could hide an explosive device. Mensch club and board members were/are encouraged to drive through the temple parking lot during the day to make sure all is as it should be.
- Michael Mandel reports that our income is about the same as last year, and we have been saving money during our break from having a rabbi, and not using the utilities at the temple as much as in typical years. If we maintain this trend and members keep up with their dues we will be in better shape to proceed towards getting a rabbi for the congregation.
- Mensch club is planning an event honoring friends, partners, spouses. It will be a Zoom meeting, more news to follow.
- The Temple Board voted to apply again for a student rabbi for the 21/22 academic year. We will ask for Sofia Zway, but if she is unable we will get another student. Sofia did ask that if she served our temple she would like to do one in person and one Zoom visit each month (excepting High Holidays).
- Religious school parents met with the teachers recently and expressed gratitude and pleasure at how well the things were going with religious school. Pearie Bruder purchased a tree to plant for Tu B'shvat. The board reminds the parents that we are adhering to state guidelines for group gatherings and would like one family to plant the tree as the religious school representatives. Dave Decker is willing to dig the hole to plant the tree.
- Sisterhood now has 50 paid members. The recent fashion presentation by Kathleen Key was excellent. The second presentation will be on February 7th at 2 PM. Ms. Key would like to do a presentation on Jewish art in the future. Sisterhood got many thanks for the menorah kits that were sent out to the kids/families (this was Cherri Hudson-Brown's idea).

- The temple is moving forward with getting a student from DACC to work on the temple web page. More focus groups are being planned, as we take this time between rabbis to get a better understanding of the needs and desires of the entire membership.
- Temple Beth-El now has a Temple Abuse Prevention Policy, and a safety committee is being put together in conjunction with this.
- Temple Beth-El welcomes new members Mark and Stefani Singer, and Cynthia Herbert.
- The re-opening committee has prepared a report that will be sent to the board members. Currently there is no scheduled date for reopening.
- New UVC germicidal hi output lamps have been installed on all the AC units so we now have clean air in readiness for in person congregating. Dave Decker is getting quotes on the cost for a full sanitization of the temple in preparation for reopening, when that time comes. A replacement camera has been ordered for our security system. The front door problem lock will be replaced with a code locking system.

## Shiva Observance

These are unusual times and it's harder than ever to remember loved ones or grieve the way we have in the past.

I want you to know you're not alone, that if you need to have an informal Zoom gathering to remember someone or a traditional (as it can be, via Zoom) Shiva, I'll try to find a way for that to happen.

Some of us have our own limitless Zoom accounts, and there are people in the congregation and Jewish professionals and para-professionals who can do a service or informal gathering. There will be more information available in the next few weeks, but in the meantime, I'm here and will do whatever I can to help.

Cherri Hudson-Brown, chair, Religious Practices Committee.



## **Donations through January 22, 2020**

### **General Operating Fund:**

Stan and Gerie Muchnikoff  
 Dee Cook, in memory of Clinton Cook  
 Diane Bass, in memory of Dr. Edward D  
   Weiss and Sylvia Weiss  
 Bill Stein, in memory of Willian Stein  
 Robert and Carla Libby, in memory of  
   Harris B Libby  
 Barry Leff  
 Allen and Michele Blum, in memory of  
   Harry Segal  
 Lila Zeigler, in memory of Melvin  
   Kirschner  
 Jerry and Rochelle Silverman, in  
   memory of Ruth Ann Sugarman  
 Honey Devins  
 Selma Ryave  
 Melvin Klein, in memory of Samuel  
   Klein

### **Social Action Fund:**

Andrea Dresser, in memory of Harold  
   Dresser  
 Sue Brown, in memory of Emily Cohen

### **Temple Beth-El Religious School Fund:**

Susan and Yosef Lapid, in memory of  
   Shmuel Farkas  
 Ann and Burt Berkson, in memory of  
   Arthur Stern and Richard Stern  
 Abraham and Amy Fiszbein, in memory  
   of George Gorelick  
 Michael and Karen Currier, in memory  
   of Alvin Phinick

### **Temple Beth-El Youth Fund:**

Jeff and Cherri Hudson-Brown, in  
   memory of Elaine Brown

### **Rabbi Gerald M. Kane Fund:**

Lynn Zeemont, in memory of Evelyn  
   Roselinsky

### **Temple Beth El Sisterhood:**

Stan and Gerie Muchnikoff

### **Camp Hope:**

Jim Rosenthal and Marianne Panzini-  
   Rosenthal  
 Michael and Barbara Mandel  
 M A Cowen  
 Joanne Turnbull  
 Brian and Lisa McCuller  
 Irwin and Barbara Ross  
 Dan and Simy Allan  
 Jeff and Cherri Hudson-Brown  
 Others who gave checks to Susan  
   Fitzgerald

### **Irving Batkin Memorial Scholarship Fund:**

Michele and Allen Blum, in memory of  
   Miriam Cutler and Joseph Tashlik

### **Biblical Garden:**

Art and Wendee Lorbeer, in memory of  
   Morris Goldstein  
 Joanne Turnbull

**Temple Beth-El Mitzvah Team**

The Mitzvah Team has identified the following tasks that it would like to perform and support with the help of Temple volunteers (please let us know if you can assist us):

- Develop a phone tree and other ways to reach out to members.
- Support the Rabbi and the Religious Practices Committee in providing special arrangements for shiv'ah minyans.
- Visit homebound and hospitalized members and members living in nursing homes, assisted living facilities, and hospice.
- Provide transportation to worship services and Temple events, medical appointments, and errands.
- Celebrate simchas (life's joyous moments).

Please contact:

- Alison Mann—575-680-0207  
[Alisonmd4@gmail.com](mailto:Alisonmd4@gmail.com)
- Luke Duddridge—727-204-6086  
[LCDuddridge@hotmail.com](mailto:LCDuddridge@hotmail.com)
- David Decker—575-556-4056  
[deckerdavid28@gmail.com](mailto:deckerdavid28@gmail.com)

**If you are aware of any members in need of the services listed above, please let us know!**

Donations continued from page 12

**Rabbi and Rhonda Karol Campership Fund:**

Stan Muchnikoff, in memory of Jesse J Muchnikoff  
Bryan and Lisa McCuller, in memory of Laura Metzger

**Mitzvah Team Fund:**

Barbara Berger, in honor of the Mitzvah team

*Given changes to the standard deduction limits, we will not be providing contribution statements for tax purposes. If you would like a statement, please contact the temple treasurer Michael Mandel to request one.*

**TEMPLE FUNDS**

Donations are gratefully accepted for the following:

**General Operating Fund**—For the day-to-day operation of TBE.

**Biblical Garden Fund**—To provide the infrastructure for biblical plants and trees, and bricks in the fountain meditation area and on the brick walkway.

**Rabbi Larry and Rhonda Karol Campership Fund**—Providing scholarships for Temple students to attend Jewish summer camp programs.

**The Mitzvah Team Fund**—to assist this voluntary team of Temple Beth-El members that, upon request and dependent upon availability, will provide non emergency support service to members of the temple.

**Social Action Fund**—For projects that benefit our community and Las Cruces and Southern New Mexico.

**Irving Batkin Memorial Scholarship Fund**—To broadly support Jewish education, based on merit or need, through participation in the TBE Religious School, camperships, and/or pursuit of Jewish collegiate studies or rabbinical studies.

**Frances Williams Library Fund**—To provide books and infrastructure for the TBE library.

**Rabbi Gerald M. Kane Fund**—Provides funds to help further adult education and cultural programming at TBE.

**Temple Beth-El Religious School Fund**—Supports the regular and special programming planned by faculty, students and the Religious School Committee.

**Temple Beth-El Youth Fund**—Support for Youth activities at TBE.

**Rabbi's Discretionary Fund**—Used to meet a variety of philanthropic requests as well as to supplement TBE programs.

Periodically the temple may list short-term projects or needs. Contributions that do not specify a project or fund will be added to the General Operating Fund. If you have a question or wish to contribute to a project not listed here, please contact our Temple Beth-El Treasurer, Michael Mandel.

# Celebrating our Simchas

The Temple Beth-El Mitzvah Team sends best wishes to these members celebrating birthdays this month:

Jeanne Brown  
Monika Kimball  
Arthur Lorbeer  
Karen F. Pierce  
Morgan Tierney

The Temple Beth-El Mitzvah Team sends best wishes to these members celebrating anniversaries this month:

Beverly and Luke Duddridge  
Rachel and Sean Duggins  
Debbie and Tom Levy  
Wendy and Arthur Lorbeer

We would love to have more names in these lists. If you would like to have us acknowledge your occasion in the future please send birth month, anniversary month, and the year you joined the temple to Luke Duddridge at [LCDuddridge@hotmail.com](mailto:LCDuddridge@hotmail.com).

If you follow the example below it would be helpful:  
Sam Adams Born July, Married March, Joined 2015

Please note that we are not collecting dates, just the months.



Temple Beth-El is part of Amazon Smile, which offers members of Temple Beth-El an opportunity to participate in Smile Amazon and donates 0.05% of all purchases back to the Temple. The process is very simple – go to

[www.smile.amazon.com](http://www.smile.amazon.com). You will

be required to enter the charity to which you wish to donate – just type in Temple Beth-El, Las Cruces in the charity box and this will set the Temple as your charity of choice. Then just shop – pretty easy and since many people today shop online via Amazon, it becomes a win-win situation for all.

Visit the Temple Beth-El Website—

[www.tbhelc.org](http://www.tbhelc.org)

for in-depth information about Temple and its programming and updates on current Temple events

\*\*\*\*\*

Temple Beth-El is on Facebook!

<http://www.facebook.com/pages/Temple-Beth-El/115816285166004>

(It is open for all to see!)

If you are on Facebook already, find our page, click “Like” and join us in our Facebook community!

### Adelante Submissions:

During this time of social distancing due to COVID-19, let us not become distant from each other. Speak with fellow congregants, friends and family. Send me your pictures of family Shabbat, musings, illustrations, etc. I will share as many as space allows in next month's Adelante.

**The deadline for turning in articles, items and photos for the March 2021 Adelante is February 20, 2021.**

**Late items may not be included.** Please do your best to keep to that schedule to facilitate a timely completion of the Adelante! All content can be e-mailed to Beth Tierney at [cambrien73@gmail.com](mailto:cambrien73@gmail.com)

### BOARD OF TRUSTEES 2020-2021

President-Cheryl Decker

Vice-President-Lynn Zeemont

Secretary– Steve Haydu

Treasurer– Michael Mandel

Barbara Berger Pearie Bruder Marieka Brown

Bryan McCuller Martha Roditti

Nan Rubin Joanne Turnbull

Jeff Lewis (Mensch Club) Dee Cook (Sisterhood)



**Tanah  
Hemingway**

(575) 524-4329

most nights

P.O Box 16318

Las Cruces

NM 88004

### **Editing:**

Books, scientific papers, theses, dissertations

**Technical documents of all sorts.**

(for accuracy, continuity, organization, style  
grammar, readability, supportability, etc.)



**Ron Bruder**

ASSOCIATE BROKER

[ronbruder@topproducer.com](mailto:ronbruder@topproducer.com)

Cell: 575-312-7330

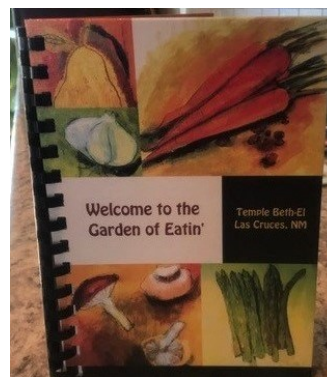
Office: 575-522-3698

Steinborn & Associates  
Real Estate

## **Temple Beth-El Cookbook**

**“Welcome to the Garden of Eatin’”**

**\$15, Cash or Check**



**Contact Francine Feinberg for copies**

[fcfeinberg@gmail.com](mailto:fcfeinberg@gmail.com) or

**414-331-3306**



# FEBRUARY 2021

\*ALL EVENTS BY ZOOM\*

Sun	Mon	Tue	Wed	Thu	Fri	Sat
<i>Shevat 18 Jan 31</i> <b>Religious School</b> <b>9:30 am</b> <b>10:15 Tu B'Shevat Seder</b>	<i>Shevat 19 1</i> <b>Short Story group</b> <b>11:00 am</b>	<i>Shevat 20 2</i> <b>Short Story group</b> <b>11:00 am</b>	<i>Shevat 21 3</i> <b>Wednesday Morning Breakfast</b> <b>9:00 am</b> <b>Tanakh Study</b> <b>10:15am</b>	<i>Shevat 22 4</i>	<i>Shevat 23 5</i> <b>Lay-Led Family Shabbat Service</b> <b>6:30 pm</b>	<i>Shevat 24 6</i> <b>Talmud Study</b> <b>9:00 am</b> <b>Torah Study with Rabbi Karol</b> <b>11:00 am</b>
<i>Shevat 25 7</i> <b>Religious School</b> <b>9:30 am</b> <b>"Fashions from the '60s to present"</b> <b>2:00 pm</b>	<i>Shevat 26 8</i> <b>Short Story group</b> <b>11:00 am</b>	<i>Shevat 27 9</i> <b>Short Story group</b> <b>11:00 am</b>	<i>Shevat 28 10</i> <b>Wednesday Morning Breakfast</b> <b>9:00 am</b> <b>Tanakh Study</b> <b>10:15am</b>	<i>Shevat 29 11</i>	<i>Shevat 30 12</i> <b>Shabbat Service</b> <b>6:30 pm with Rabbi Sofia</b>	<i>Adar 1 13</i> <b>Talmud Study</b> <b>9:00 am</b> <b>Shabbat morning Service</b> <b>10:15 am</b> <b>Torah Study</b> <b>11:15 am with Rabbi Sofia</b>
<i>Adar 2 14</i> <b>Women of Talmud</b> <b>12:00 PM</b>  <b>NO RELIGIOUS SCHOOL,</b> <b>Presidents' Day break</b>	<i>Adar 3 15</i> <b>Short Story group</b> <b>11:00 am</b>  <i>Presidents' Day</i>	<i>Adar 4 16</i> <b>Short Story group</b> <b>11:00 am</b>	<i>Adar 5 17</i> <b>Wednesday Morning Breakfast</b> <b>9:00 am</b> <b>Tanakh Study</b> <b>10:15am</b>	<i>Adar 6 18</i> <b>Board Meeting</b> <b>6:00 pm</b>	<i>Adar 7 19</i> <b>Lay-Led Shabbat Service</b> <b>6:30 pm</b>	<i>Adar 8 20</i> <b>Talmud Study</b> <b>9:00 am</b> <b>Torah Study with Rabbi Karol</b> <b>11:00 am</b>
<i>Adar 9 21</i> <b>Religious School</b> <b>9:30 am</b>	<i>Adar 10 22</i> <b>Short Story group</b> <b>11:00 am</b>	<i>Adar 11 23</i> <b>Short Story group</b> <b>11:00 am</b>	<i>Adar 12 24</i> <b>Wednesday Morning Breakfast</b> <b>9:00 am</b> <b>Tanakh Study</b> <b>10:15am</b>	<i>Adar 13 25</i> <b>5:30 Virtual Purim Carnival</b> <b>6:30 PM Megillah reading, shpiel and songs</b>	<i>Adar 14 26</i> <b>Shabbat Service</b> <b>6:30 pm with Rabbi Sofia</b>  <i>Purim</i>	<i>Adar 15 27</i> <b>Talmud Study</b> <b>9:00 am</b> <b>Shabbat morning Service</b> <b>10:15 am</b> <b>Torah Study</b> <b>11:15 am with Rabbi Sofia</b>
<i>Adar 16 28</i> <b>Religious School</b> <b>9:30 am</b>						

3980 Sonoma Springs Avenue  
Las Cruces, NM 88011

Phone: 575.524.3380  
Fax: 575.521.8111

President:  
Cheryl Decker

Student Rabbi: Sofia Zway

Rabbi Emeritus:  
Lawrence P. Karol

The Temple Beth-El Newsletter is produced regularly at Las Cruces, New Mexico. Editor: Beth Tierney. Copy Editors: James Rosenthal, Tanah Hemingway, Rabbi Larry Karol. Circulation: Cheryl Decker. We welcome Adelante sponsorships by or for Temple members and non-members. Sponsorships can be mailed to the Temple; receipts are provided upon request. We reserve the right to edit all sponsorships. Non-member sponsorships (with no ad) are \$25/year. Annual sponsorship rates are as follows: 2x3 business card \$150; Quarter page \$300; Half page \$600. For information about sponsorships, please contact the Temple Office.

**Temple Beth-El and “Adelante” are on the web at  
[www.tbclc.org](http://www.tbclc.org)**

February, 2021



**Temple Beth-El  
3980 Sonoma Springs Avenue  
Las Cruces, NM 88011**