

# Adelante!

A Monthly Publication for Temple Beth-El,

Las Cruces, New Mexico

DECEMBER 2022 (KISLEV-TEVET 5783)



On Sunday, December 4 from 9:00 am-12 noon, at TBE, the Sisterhood gift shop will be open for your Chanukah purchases AND THEN

From 1:00-4:00 pm, the Art Show and Sale " Celebrating a Legacy of Art and Friendship" will take place in the TBE Social Hall. Here's the story behind this Temple Fundraiser:

Annetta Hoover, who will be 90 in January, has been a prominent member of Las Cruces' artistic community for decades. She and longtime TBE members, Ruth Ann and Barney Sugarman (of Blessed Memory) were best friends. Ruth Ann and Annetta met in an art class. To recognize that friendship and the close ties of the Sugarmans to the Temple, Annetta is providing the Temple with many of her marvelous works to be sold as a Temple fundraiser. Annetta's work can be found in private and corporate collections across the U.S. and she has garnered many honors and awards for her art.

You will also be able to view and buy art from several of our TBE member artists who will share their profits with the Temple. Debbie Levy, Kathi Barit, Donna Popky, Bob Kimball, Gerie Muchnikoff, Lenore Hindin and a few works of Ruth Ann Sugarman will be on display.

This show is open to the public so tell all your friends and family, and bring them in! Credit cards, cash and checks will be accepted.

We will have light refreshments.

Questions? Contact Alison Mann ( 575 ) 680-0207 or Joanne Turnbull (207)831-0310.



## Chanukah Service and Celebration Friday, December 23rd.



**Bring your Menorah for lighting during the service and of course, your Latkes!**

**Interested in helping in the kitchen and with clean up? Contact Wendee Lorbeer**

**at [mathwendee@gmail.com](mailto:mathwendee@gmail.com).**

## Worship Schedule

**Most services will be in person but will also be available by Zoom and Facebook live.**

You can watch the Facebook livestream for holiday and Shabbat services on this page:

<https://www.facebook.com/pages/category/Synagogue/Temple-Beth-El-115816285166004/>

Zoom invites for all services, and any text to follow, will be sent out weekly.

If you do not have a siddur at home, you can follow along in the Mishkan T'filah flipbooks provided by the Central Conference of American Rabbis at this link

<https://www.ccarnet.org/publications/mishkan-tfilah-for-shabbat/>

These flipbooks are provided free of charge, but donations are gratefully accepted to allow the CCAR to continue to do so. This webpage includes a link to donate as well as links to purchase an e-book which can be viewed on any device using the free Kindle App.

### Wednesdays

Tanakh study with Rabbi Larry Karol via Zoom at 10:15 am (no Tanakh Dec. 14 and 28) Contact Rabbi Karol

([rablpkarol@gmail.com](mailto:rablpkarol@gmail.com)) to join

### Saturdays

Talmud Study 9:00 AM

In person and by Zoom. Link sent weekly. 1st and 3rd week, shorter morning service and Torah study.

2nd and 4th week, longer service with full Torah service.

### Friday, December 2

6:30 pm, Shabbat Evening service

### Saturday, December 3

10:30 Saturday morning service & Torah study

Parshat Vayetze

Genesis 28:10-32:3

### Friday, December 9

6:30 pm Shabbat evening service

### Saturday, December 10

9:00 am via Zoom, Talmud study

10:30 Saturday morning service with full Torah Service

Parshat Vayishlach

Genesis 32:4-35:43

### Friday, December 16

6:30 pm Shabbat evening service

### Saturday, December 17

9:00 am via Zoom, Talmud study

10:30 Saturday morning service & Torah study

Parshat Vayeshev

Genesis 35:1-40:23

### Friday, December 23

6:30 pm, Shabbat evening service and Chanukah celebration

### Saturday, December 24

9:00 am via Zoom, Talmud study

10:30 Saturday morning service with full Torah Service

Parshat Miketz

Genesis 41:1-44:17

### Friday, December 30

6:30 pm, Shabbat evening service

### Saturday, December 31

9:00 am via Zoom, Talmud study

10:30 Saturday morning service & Torah Study

Parshat Vayigash

Genesis 44:18-47:27

**DECEMBER 2022 (KISLEV-TEVET 5783)****Yahrzeits– December 2, 2022—December 31**

(Listings include the name of the loved one on the yahrzeit list and the name of the congregant or congregants remembering that loved one - asterisks indicate loved ones remembered with memorial plaques)

**Read on December 2 & 3, 2022**

Barbara Breskow (Debbie & Steve Leyndyke)  
 Charles Kruger (Linda M. Kruger)  
 Lionel Jacobs (Rose Jacobs)  
 Dr. Michael Polsky\* (Rita Polsky)  
 Leo Bienstock (Stan & Gerie Muchnikoff)  
 Mel Kirschner (Bob & Judy Kirschner, Lila Ziegler)  
 David Silverman (Jerald & Rochelle Silverman)

**Read on December 9 & 10, 2022**

Celia Greenberg (Cyrille S. Kane)  
 Sol Podolsky (Rosalyn Richman & Selma Ryave)  
 William Silberman (Cyrille S. Kane)  
 Roslyn Sugarman (Stan & Gerie Muchnikoff)  
 Stanley S. Bergman (Nancy Bergman & Greg Artman)  
 Ida Weinstein Epstein (Marlene Benz)  
 Irvin Kershner (Evette Lutman & Shari Abramowitz)

**Read on December 16 & 17, 2022**

Daisy Chapman (Diane Fleishman)  
 Samuel Goldman (Jerald & Rochelle Silverman)  
 Samuel Spiegel ( Sheri Spiegel & John Ragosta)  
 Tova Zameret (Erich & Elaine Zameret)  
 Samuel David Goldberg (Richard & Darlene Goldberg)  
 Gary Mann (Alison Mann)

**Read on December 23&24, 2022**

Helen Isaacs (Linda M. Kruger)  
 Florence Kaye (Patrick & Susan Quinn)  
 Lee Gutman (Allen & Eve Palanker)  
 Sidney Kaye (Patrick & Susan Quinn)  
 Carolyn Wolfe\* (Martin Poel)  
 Lillian Klein (Tom & Deborah Levy)  
 Charles Klein (Tom & Deborah Levy)

**Read on December 30 & 31, 2022**

Eleanor Goldman (Jerald & Rochelle Silverman)  
 Lynn Loudon (Cheryl & David Decker)  
 Etta Muchnikoff (Stan & Gerie Muchnikoff)  
 Harry Segal (Allen & Michele Blum)  
 Charles Lipsitz (Rosalyn Richman & Selma Ryave)



**Honor the memory of loved ones with a memorial plaque and mark celebrations and milestones (and also the memory of friends and family) by adding leaves to our Tree of Life.**



In order to ensure that the name of your loved one will be recited during services, we have instituted the following practices:

- The Hebrew dates for each week's Yahrzeits are listed in each Adelante.
- Names are read on the Shabbat **following** the Yahrzeit, or on the day, if it falls on that Shabbat.
- Hebrew vs. conventional (Gregorian) calendar: The temple's tradition is to base the Yahrzeits list on the Hebrew calendar. Those who wish to have a name read on a Friday night close to the conventional (Gregorian) calendar date are asked to please email or call the Temple office a few days prior to the service.

\*Asterisks indicate that a loved one has been permanently memorialized with a plaque in the Temple sanctuary. If you are interested in acquiring a plaque for your loved one, contact the Temple office. Current TBE members may purchase a plaque for \$300. Non TBE members may purchase a plaque for \$600.

**BOARD OF TRUSTEES 2022-2023**

President-Nan Rubin  
 Vice-President-Lynn Zeemont  
 Secretary– Deb Leyndyke  
 Treasurer– Joel Seigel  
 Pearie Bruder Steven Haydu  
 Martha Roditti Diane Fleishman  
 Cherri Hudson-Brown Donna Popky Wendee Lorbeer  
 Jeff Lewis (Mensch Club)  
 Dee Cook (Sisterhood)

## Ninth Annual Matzo Ball Open

Fifty-eight golfers played in our 9<sup>th</sup> Annual Matzo Ball Open held at Picacho Hills Country Club. At the conclusion of play, all players and volunteers enjoyed lunch and matzo ball soup afterwards. Thanks to Shari Abramowitz who prepared the matzo ball soup, expertly at that.

Our MBO event this year turned a portion of our proceeds to Mesilla Valley Hospice, our designated charity for this year.

The winning men's team was led by our own **Stan Muchnikoff** and the winning women's team was sponsored by our own **Roslyn Richman**, though she did not play. All those smiling faces in the photos are testimony to a fun time.

A special thanks to our TBE Volunteers who arrived early and stayed late to insure that everything was done as required. We thank Deb Leyndyke, Carla and Terry Gertner, Mark Singer, Dave Decker, Jeanne and Marieka Brown, Liana Brown, Rabbi Evette, and Michelle Blum.

Nina Salmon, Executive Director of the Hospice was present to explain the Mesilla Valley Hospice's mission and to thank all participants as well.

We thank all our hole sponsors and raffle donors. **Please remember to support our local business sponsors.**

### Hole Sponsors

Stacey Hyman  
 Jack Greenspan  
 The Mann Family  
 Jeff Brown & Cherri Hudson-Brown  
 Roz Richman and Selma Ryave  
 Donna and Eric Popky  
 The Closet Factory, El Paso – Lori Gaman  
 Dee and Sassy Cook  
 Burt and Ann Berkson  
 Jewish El Paso  
 Dimar Systems Fire Protection  
 Citizens Bank  
 The Jewish Community Foundation of El Paso  
 Michael and Barbara Mandel  
 Michele and Allen Blum  
 Bruder Real Estate Team – Ron Bruder  
 Julie Seton  
 Integrative Medical Center of New Mexico – Arthur Berkson  
 Paula Kramer  
 Dona Ana Pest Control, Inc.  
 Susan Michaelson and Bill Stein  
 PTS Office Systems  
 Elizabeth Lewis  
 David and Cheryl Decker  
 H. Brown Enterprises, LLC – Henri Brown  
 Art and Wendee Lorbeer

### Raffle Donors

Strings Theater Company  
 Fitness One  
 Gerie Muchnikoff  
 Mirror Images Spa  
 Get Away Massage and Spa  
 Stacey Hyman  
 Las Cruces Symphony  
 Julie Seton  
 Allen Blum  
 Picacho Hills Country Club  
 Las Cruces Beauty



**The Passing of a Woman of Valor**  
**By Frances F. Williams**

Helen Gluck was a woman whose worth was more than rubies. She was born in Czechoslovakia, taken by the Nazis at the age of thirteen to a concentration camp where she did heavy labor to clear the way for the German tanks to advance to their next killing field. Both she and her sister were then transferred to Auschwitz when she was about 14 years old and liberated by the Russians when she was 17. She learned many years later from someone who knew her parents that they were killed at Sobibor. She never found out what happened to her four brothers.

Helen met her husband, Morris, at a displaced persons camp and they both came to Las Cruces to start a new life. They were both members of Temple Beth-El for many years. Helen was one of the original Sisterhood members (you can view the picture of the First Sisterhood members which is hanging on the wall of the Administrative Office at the Temple). Morris opened up an upholstery shop in downtown Las Cruces and when the Braceros came to town to pick the cotton the Sisterhood, led by Rose Wechter, had their rummage sale there. Everything sold because the braceros took their purchases with them when they went back to Mexico. This went on for about three years.

We have had two holocaust survivors - Nathan Weisleman and Helen Gluck. They are both gone now. May their memories be for a blessing.

**Something to Kvell about. . .**

This is a link to a short story written by Gabriel Lampert who was a congregant for many years when he taught at NMSU. He lives in San Francisco now. The story has been nominated for a Pushcart Prize.

<https://jewishfiction.net/index.php/publisher/articleview/frmArticleID/785>

**Celebrating our Simchas**

**The Temple Beth-El Mitzvah Team sends best wishes to these members celebrating birthdays this month:**

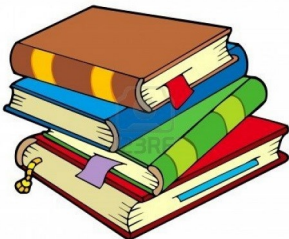
Susan Brown	Ron Bruder
Karen Currier	Karen Dinan
Scott Gubin	James Jaworski
Debbie Levy	Michael Mandel
Rebeca Martinez	Lisa McCuller
Ron Pierce	Danielle Tapper
Beth Tierney	Jamie Tierney

**The Temple Beth-El Mitzvah Team sends best wishes to these members celebrating anniversaries this month:**

We have no entries for December in our database

We would love to have more names in these lists. If you would like to have us acknowledge your occasion in the future please send birth month and anniversary month to Luke Duddridge at [LCDuddridge@hotmail.com](mailto:LCDuddridge@hotmail.com)

The Temple Beth-El short story discussion group invites you to join us as we continue our weekly readings and Zoom discussions. The current session began October 11 and will go till mid December. If you love fiction, lively conversation and the company of fellow fiction lovers, this is the place for you. We meet on Tuesdays from 11:30 a.m. to 1 p.m. Las Cruces time. Our stories, which are emailed to participants each week, feature the writing of some of the world's best-known Jewish authors, past and present. For more information, contact Jim Rosenthal at [jar529@gmail.com](mailto:jar529@gmail.com)



## Donations through November 23, 2022

### General Fund:

Frank and Dinny Bomberg, for onegs  
 Eric and Donna Popky, in honor of Rabbi Evette's installation  
 Jeff and Avis Lewis, in memory of Beverly Lewis  
 Gabriel Lampert, in memory of Anna and Benjamin Lampert and Gabriel's aunt  
 Jeff and Cherri Hudson-Brown, for tech funding  
 Sam Klein, in memory of Bea and Howard Klein  
 Art and Wendee Lorbeer, in memory of Dave Zeemont  
 Dee Cook, cemetery service  
 Lenora Johns, to work with our hands and with our hearts for the benefit of the homeless in our community  
 Paula Kramer

### Sisterhood Fund:

Erich and Elaine Zameret, for Onegs  
 Bryan and Lisa Ehlers McCuller  
 Susan Lapid, for Onegs

### Rabbi Discretionary Fund:

Cyrille Kane, in memory of Sam Greenberg & Sheldon Harris  
 Bryan and Lisa Ehlers McCuller, in memory of Gary Metzger  
 Darlene and Richard Goldberg  
 Allen and Eve Palanker, in memory of Maxine Goldberg

### Social Action Fund:

Jerry and Shelly Silverman, in memory of Maxine Goldberg

### Biblical Garden Fund:

Gerie and Stan Muchnikoff, in memory of Leo Bienstock  
 Bryan and Lisa Ehlers McCuller, in memory Arlene Metzger  
 Jerome

### Frances Williams Library Fund:

Frances Williams, in memory of Helen Gluck

### Temple Beth-El Youth Fund:

Art and Wendee Lorbeer, for Casa de Peregrinos in memory of Dave Zeemont

## TEMPLE FUNDS

Donations are gratefully accepted for the following:

**General Operating Fund**—For the day-to-day operation of TBE.

**Biblical Garden Fund**—To provide the infrastructure for biblical plants and trees, and bricks in the fountain meditation area and on the brick walkway.

**Rabbi Larry and Rhonda Karol Campership Fund**—Providing scholarships for Temple students to attend Jewish summer camp programs.

**The Mitzvah Team Fund**— to assist this voluntary team of Temple Beth-El members that, upon request and dependent upon availability, will provide non emergency support service to members of the temple.

**Social Action Fund**—For projects that benefit our community and Las Cruces and Southern New Mexico.

**Irving Batkin Memorial Scholarship Fund**—To broadly support Jewish education, based on merit or need, through participation in the TBE Religious School, camperships, and/or pursuit of Jewish collegiate studies or rabbinical studies.

**Frances Williams Library Fund**—To provide books and infrastructure for the TBE library.

**Rabbi Gerald M. Kane Fund**—Provides funds to help further adult education and cultural programming at TBE.

**Temple Beth-El Religious School Fund**—Supports the regular and special programming planned by faculty, students and the Religious School Committee.

**Temple Beth-El Youth Fund**—Support for Youth activities at TBE.

**Rabbi's Discretionary Fund**—Used to meet a variety of philanthropic requests as well as to supplement TBE programs.

Periodically the temple may list short-term projects or needs. Contributions that do not specify a project or fund will be added to the General Operating Fund. If you have a question or wish to contribute to a project not listed here, please contact our Temple Beth-El Treasurer, Michael Mandel.

### **"Have you considered a bequest to Temple Beth-El?"**

An important part of our future is represented by bequests made by members.

Thoughtful bequests enable Temple Beth-El to retain the future of Jewish life for generations to come.

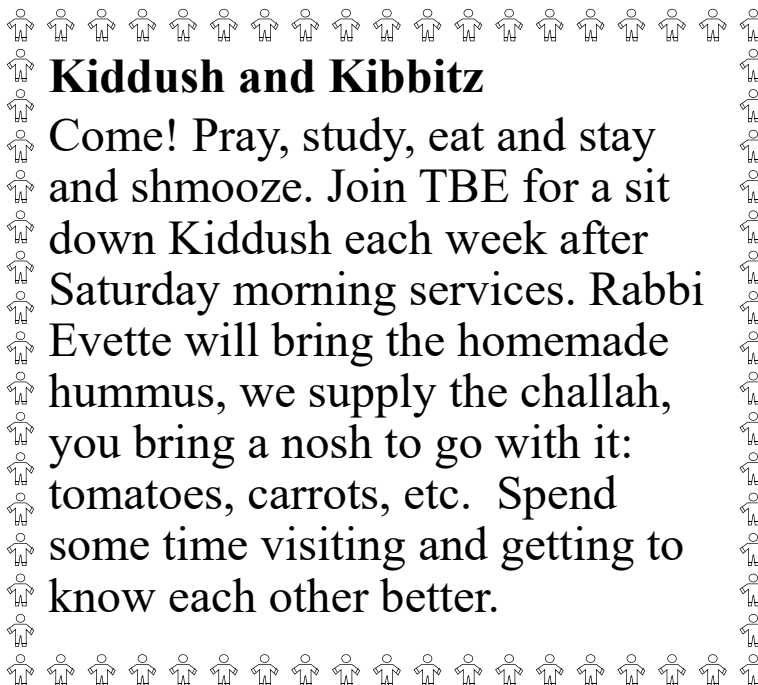
From funding our Rabbi to scholarships at our religious school, your generous gift maintains our financial health.

A simple codicil can be added to your existing will, if you wish to make a bequest, such as:

**"I give and bequest to Temple Beth-El, located in Las Cruces, New Mexico, the sum of \$ \_\_\_\_\_ [or \_\_\_\_\_ percentage of my estate as finally determined for federal estate tax purposes]."**

A will or codicil should be prepared by an attorney.

Please call the Temple office at (575) 524-3380 to discuss including Temple Beth-El in your estate.



## Kiddush and Kibbitz

Come! Pray, study, eat and stay and shmooze. Join TBE for a sit down Kiddush each week after Saturday morning services. Rabbi Evette will bring the homemade hummus, we supply the challah, you bring a nosh to go with it: tomatoes, carrots, etc. Spend some time visiting and getting to know each other better.



**“A lie can travel halfway around the world before the truth puts on its boots.”**

It was not Mark Twain, but writer/journalist/satirist Jonathan Swift who first penned this expression. Even in the late 1700s, it seems that fake news was rapidly shared, even by just

word of mouth and a printing press. How much easier is it today, in a world with instantaneous global electronic communications!

I thought about this phenomenon a lot recently, because of the torrent of racist, homophobic, anti-immigrant, and anti-Semitic rhetoric spewing out at a fever pitch before and after our elections.

Anti-Jewish sentiments are not new, they have been around literally for centuries. But in our age of instant access over the internet, over the last few years, hate speech has become socially acceptable to express in public. Not just talk - racist ideologies and hateful conspiracy theories have led to violence and mass murders across the country. It's been terrifying to see the results: from neo-Nazis in Charlottesville, to the murder of half-a-dozen Asian women in Atlanta, the targeting of Black people in a Buffalo supermarket, nearly two dozen Hispanic shoppers mowed down at the Walmart in El Paso, and just this month, a mass killing at a queer night club in Colorado Springs. And there was the massacre at Tree of Life Synagogue in Pittsburgh, where 11 worshipers were gunned down.

Hatred of Jews is nearly as old as Christianity. When Jews refused to convert, they were targeted and oppressed, massacred, taken into slavery, and banished into exile. Since then, “the Jews” have been blamed for everything from natural disasters to class warfare. Not content to wait to murder Muslims in order to take back Jerusalem in 1099, the first Crusaders had a bloody history of murdering infidel Jews in Germany and other parts of Europe before they even got close to the Holy Land. The accusation of the blood libel first raised its ugly head in 1144 and has shown unrelenting persistence across Europe over the centuries. The term “ghetto” was first used in Venice in 1516 to designate the small, segregated neighborhood where Jews were forced to live.

The actual term “anti-Semitic” meaning Anti-Jewish was coined in Germany in 1879 and by the early 20th century, Henry Ford had published the notorious fake news “The Protocols of the Elders of Zion” which asserted that Jews created a secret cabal to rule the world through international banking and communism. Claiming that the Jews owned Hollywood and the media is just the latest iteration of the spectral conspiracy. Throw in some racial bigotry to further support Jew hating, and the result was the Holocaust.

“All racist positions baffle and appall me. If I refuse to hate Jews, or anybody else, it is because I know how it feels to be hated.” James Baldwin, 1967.

Recent anti-Jewish comments by Ye and Kyrie Irving are upsetting but hardly novel, even within the Black community. This language and the sentiment behind it may be totally abhorrent, but the true danger lies in how it motivates people to act, particularly with violence. Other groups have certainly been targeted, especially people of color, but because the core of these conspiracies lies with “the Jews”, we are the ones most consistently at risk.

At the same time that we are given huge respect for our accomplishments and success as immigrants, we are also held responsible for having the power to secretly control how the world works. In this context, a conspiracy theory that explains everything is much more attractive than an analysis that involves the history of Christianity, the lasting impact of European colonialism, and how the capitalist economy works.

Hundreds of prominent individuals spoke up immediately to condemn the hate. But responses in solidarity often mean the most, such as when Adidas pulled their multimillion-dollar contract from Kanye to protest his anti-Semitic slurs. A few years ago, 10,000 residents of Billings, Montana put menorahs in their windows when their Jewish neighbors were threatened by white supremacists. We saw whole football teams “take the knee” when Colin Kaepernick tried to support Black Lives Matter. And right now, most of the world is watching as dozens of soccer teams in Qatar for the World Cup, are committed to wearing rainbow armbands in solidarity with the LGBTQ community despite the prohibition of these symbols.

We can be grateful that anti-Semitic conspiracy theories are debunked constantly and that communities and organizations around the country reject the hate and stand up for us. We can do no less when we see others battling racist and homophobic policies and laws, overt and covert bigotry, and ongoing threats of physical violence. These days, there is plenty of such work to keep us busy for a long time.

L'Shalom

Nan Rubin, President

Temple Beth-El, Las Cruces

president.tbcl@gmail.com

# Rabbi Evette Installation

On Sunday, November 6, Temple Beth-El officially installed Rabbi Evette Lutman as our spiritual leader. Many jokes were made regarding what and where we were installing her but I am sure that we can agree that she has been installed fondly in our hearts. The ceremony featured remarks by Ned Rubin, Stuart Kelter and Nan Rubin. We were also treated to two musical performances. One, sung by the religious school students, led by Ruth Rubin. The other, violins played by Amalia Zeitlin-Kelter and Julio Campos. Rabbi Evette was presented with two kiddush cups handmade by MaryAnn Hendrickson. All this was followed up with refreshments from Le Rendez-vous Café.



## Temple Beth-El Board of Trustees Meeting Summary for November 19, 2022

President Nan Rubin had several items to report.

- Rabbi Evette's Installation weekend was very successful; well attended by congregants and community members. We thank everyone who attended and helped with the planning of this event.
- Another special event is in the works. We would like to schedule a performance at TBE on Sunday, December 11, featuring Ariella Zeitlin (Stuart and Leora's niece), an Israeli classical/pop crossover violinist.
- The third item discussed was the possible return of the Jewish Food and Folk Festival. This has been a special event for the Las Cruces community and a big fundraiser for TBE. If you are interested in becoming a co-chair or helping with this event, please contact one of the board members.
- Rabbi Evette Lutman has some exciting ideas for the upcoming holidays and will be looking for members to help with this. The Rabbi also reported that Adult Education is going well and she hopes to add several more classes in the coming months, including a B'nai Mitzvah class and a one day class focusing on reading Hebrew. The Mussar class will continue as well.
- Stacey Hyman reported that TBE's finances are where we expect them to be and should continue to stay consistent through the end of the year.
- The Matzo Ball Open fundraiser did well, however it brought in a bit less than what was expected.
- It was suggested that there be a review of the Bylaws and Constitution of the temple. A committee of Board Members is being formed to discuss and revise what is needed; the original Bylaws/Constitution date back to the 1950's. A report will be made to the congregation at the General Membership meeting next May.
- **Dates to Remember:**
  - \* *December 4-* Sisterhood gift shop will be open from 9-12 for your Chanukah purchases. Also, the Art Show and Sale from 1:00-4:00 PM will take place in the social hall. This event is open to the community so please tell/bring your friends.
  - \* *December 23-* Come to the Friday Shabbat service where we will host a group menorah lighting and nosh on latkes after the service.

Respectfully Submitted  
Deb Leyndyke, Secretary

## TBE Religious School



Seedlings planted and tended by our students. The lettuce was harvested and enjoyed over two Sunday sessions as part of breakfast. A Shehecheyanu prayer was offered. The bell peppers will soon need to be transplanted.



5th-7th grade students working together to build a Tower of Babel, without using words, as part of their Torah study lesson.

*Gail Braverman is a Board Member at Temple Emanu-El in San Diego. Gail writes "Community Corner", for her synagogue's monthly newsletter and has graciously offered to share her columns with us. She is a Marriage & Family Therapist.*

## Just Like Me

Gail L. Braverman, LMFT

We do it in the blink of an eye without even knowing it. We see a homeless person with a sign asking for money and think: That person is on drugs, and is probably too lazy to get a job. We don't even know that person's story.

Writer Andrew Solomon said, "It is nearly impossible to hate anyone whose story you know."

Why do we judge each other so quickly? In some strange way, it is to make us feel better. When we see someone behaving in a way that we disagree with, or don't like, we think, "I would never do that. I'm better than that. I'm smarter than that." Dismissing and putting someone else down makes us feel temporarily better about ourselves, but in the long run, it pushes people away and distracts us from our own shortcomings and what we need to do to improve ourselves.

The problem with judging people is that we reduce them down to a handful of characteristics ignoring the fact that people are complex and have many different sides to them.

If you haven't seen it, I would encourage you to watch Tyler Merritt's powerful video "Before You Call The Cops." It is only 3 minutes long. Tyler is a 6-foot-2 black man with dreadlocks who says in his moving dialogue he hates that anyone might possibly be afraid of him and then he tells you who he is and just wants "you to get to know me better before you call the cops."

Everyone's experience is unique. We can never fully understand someone else's circumstances. Whenever we are faced with a person or circumstance that we don't understand or makes us uncomfortable, there is an opportunity to grow. Look for the positive in people. Question yourself and ask "why does this person bother me so much?"

In that blink of an eye when my mind jumps to judging another person, I try to replace judgment with understanding, compassion, and love. I try to remember this person has feelings, emotions, and thoughts just like me.

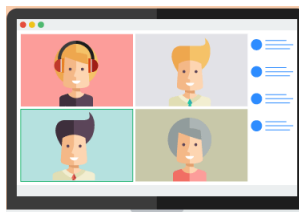
This person has, at some point in his or her life, been sad, disappointed, angry, hurt, or confused, just like me. This person has, in his or her life, experienced physical and emotional pain and suffering, just like me. This person wishes to be healthy, loved, and happy, just like me.

**Reflection:** How might changing my thinking make the world a better place?

**Today's Practice:** Today when I see someone who I start to judge, I will think of how they may be "just like me."

Comments are always welcomed: gbrave3333@aol.com

## Donation Opportunity



After 2+ years of dedicated service to the Temple, Steve Haydu and Marieka Brown are ready to pass the technology torch to a permanent employee. First, thank Steve and Marieka when you see them.

Second, consider a donation to the General Fund to help pay for us to continue broadcasting via Zoom and Facebook Live.

Temple Beth-El has hired John Schwendinger to perform the technology work. A paid position should improve reliability, where not many of us can step in with either the skill set or a commitment to every Friday service. The Temple is proceeding. The money is not in the 2022-2023 budget and when disbursed, will be represented as an overrun. We are seeking on the order of \$1000 for the remainder of this Fiscal Year.



**Temple Beth-El is part of Amazon Smile**, which offers members of Temple Beth-El an opportunity to participate in Smile Amazon and donates 0.05% of all purchases back to the Temple. The process is

very simple – go to [www.smile.amazon.com](http://www.smile.amazon.com). You will be required to enter the charity to which you wish to donate – just type in Temple Beth-El, Las Cruces in the charity box and this will set the Temple as your charity of choice. Then just shop – pretty easy and since many people today shop online via Amazon, it becomes a win-win situation for all.

**Visit the Temple Beth-El Website**

[www.tbcl.org](http://www.tbcl.org)

**for in-depth information about Temple and its programming and updates on current Temple events**

\*\*\*\*\*

**Temple Beth-El is on Facebook!**

<http://www.facebook.com/pages/Temple-Beth-El/115816285166004>

(It is open for all to see!)

**If you are on Facebook already, find our page, click "Like" and join us in our Facebook community!**

# DECEMBER 2022

Sun	Mon	Tue	Wed	Thu	Fri	Sat
				Kislev 7 1 Mussar 12:00 pm	Kislev 8 2 Shabbat Evening Services 6:30 pm	Kislev 9 3 Talmud Study 9:00 am Shabbat Service & Torah Study 10:30 am
Kislev 10 4 Religious School 9:00 am Chanukah Boutique 9:00 am– 12:00 pm Art Sale 1:00–4:00 pm	Kislev 11 5	Kislev 12 6 Short Story Group 11:30 pm via Zoom	Kislev 13 7 Tanakh Study 10:15am via Zoom	Kislev 14 8 Mussar 12:00 pm	Kislev 15 9 Shabbat Evening Services 6:30 pm	Kislev 16 10 Talmud Study 9:00 am Shabbat Service 10:30 am
Kislev 17 11 Religious School 9:00 am Ariella Zeitlin Concert (tentative, time TBD)	Kislev 18 12	Kislev 19 13 Short Story Group 11:30 pm via Zoom	Kislev 20 14 NO TANAKH STUDY	Kislev 21 15 Mussar 12:00 pm TBE Board Meeting 6:00 PM	Kislev 22 16 Shabbat Evening Services 6:30 pm	Kislev 23 17 Talmud Study 9:00 am Shabbat Service & Torah Study 10:30 am
Kislev 24 18 NO RELIGIOUS SCHOOL  <i>Chanukah Begins</i>	Kislev 25 19	Kislev 26 20 Short Story Group 11:30 pm via Zoom	Kislev 27 21 Tanakh Study 10:15am via Zoom	Kislev 28 22 Mussar 12:00 pm	Kislev 29 23 Shabbat Evening Services & Chanukah Celebration 6:30 pm	Kislev 30 24 Talmud Study 9:00 am Shabbat Service 10:30 am
Tevet 1 25 NO RELIGIOUS SCHOOL	Tevet 2 26	Tevet 3 27 Short Story Group 11:30 pm via Zoom	Tevet 4 28 NO TANAKH STUDY	Tevet 5 29 Mussar 12:00 pm	Tevet 6 30 Shabbat Evening Services 6:30 pm	Tevet 7 31 Talmud Study 9:00 am Shabbat Service & Torah Study 10:30 am  <i>New Year's Eve</i>

3980 Sonoma Springs Avenue  
Las Cruces, NM 88011

Phone: 575.524.3380  
Fax: 575.521.8111

President:  
Nan Rubin

Rabbi:  
Evette Lutman

Rabbi Emeritus:  
Lawrence P. Karol

The Temple Beth-El Newsletter is produced regularly at Las Cruces, New Mexico. Editor: Beth Tierney. Copy Editors: Nan Rubin, Rabbi Larry Karol, Aggie Saltman and Alison Mann. Circulation: Cheryl Decker. We welcome Adelante sponsorships by or for Temple members and non-members. Sponsorships can be mailed to the Temple; receipts are provided upon request. We reserve the right to edit all sponsorships. Non-member sponsorships (with no ad) are \$25/year. Annual sponsorship rates are as follows: 2x3 business card \$150; Quarter page \$300; Half page \$600. For information about sponsorships, please contact the Temple Office.

**Temple Beth-El and “Adelante” are on the web at  
[www.tbclc.org](http://www.tbclc.org)**

**December, 2022**



**Temple Beth-El  
3980 Sonoma Springs Avenue  
Las Cruces, NM 88011**