

# Adelante!

A Monthly Publication for Temple Beth-El,  
Las Cruces, New Mexico



JANUARY 2023 (TEVET-SHEVET 5783)

**Sisterhood and Mensch Club of Temple Beth-El  
present:**

## **A Trivia Game Event**

**Come enjoy a Great Social Afternoon!**

**Temple Beth-El Social Hall**

**Sunday, January 22, 2023**

**2-4 PM**

**A professional trivia company will present the  
games. Admission fee \$15 each or \$25 per  
couple.**

**There will be Refreshments and Awards.**

**Questions:**

**arthurlorbeer@yahoo.com**

**elliotk@att.net**

## **Save the Date!**

**“An Afternoon at the  
Auction”**

**Sunday, March 5**

**More details to come . . .**

### **BOARD OF TRUSTEES 2022-2023**

President-Nan Rubin

Vice-President-Lynn Zeemont

Secretary- Deb Leyndyke

Treasurer- Joel Seigel

Pearie Bruder Steven Haydu

Martha Roditti Diane Fleishman

Cherri Hudson-Brown Donna Popky

Wendee Lorbeer

Jeff Lewis (Mensch Club)

Dee Cook (Sisterhood)

## Worship Schedule

**Most services will be in person but will also be available by Zoom and Facebook live.**

You can watch the Facebook livestream for holiday and Shabbat services on this page:

<https://www.facebook.com/pages/category/Synagogue/Temple-Beth-El-115816285166004/>

Zoom invites for all services, and any text to follow, will be sent out weekly.

If you do not have a siddur at home, you purchase a print copy or an e-book, (less expensive option) which can be viewed on any device using the free Kindle App. These can be bought from the Central Conference of American Rabbis at this link <https://www.ccarnet.org/publications/misakan-tfilah-for-shabbat/>

Due to copyright law and content licensing, as of January 1st, the free flipbooks are no longer available.

### Wednesdays

Tanakh study with Rabbi Larry Karol via Zoom at 10:15 am. Contact Rabbi Karol ([rablpkarol@gmail.com](mailto:rablpkarol@gmail.com)) to join

### Saturdays

Talmud Study 9:00 AM

In person and by Zoom. Link sent weekly. 1st and 3rd week, shorter morning service and Torah study.

2nd and 4th week, longer service with full Torah service.

### Friday, January 6

6:30 pm, Shabbat Evening service

### Saturday, January 7

10:30 Saturday morning service & Torah study

Parshat Vayechi

Genesis 47:28-50:26

### Friday, January 13

6:30 pm Shabbat evening service

### Saturday, January 14

9:00 am via Zoom, Talmud study

10:30 Saturday morning service with full Torah Service

Parshat Shemot

Exodus 1:1-6:1

### Friday, January 20

6:30 pm Shabbat evening service

### Saturday, January 21

9:00 am via Zoom, Talmud study

10:30 Saturday morning service & Torah study

Parshat Vaera

Exodus 6:2-9:35

### Friday, January 27

6:30 pm, Shabbat evening service

### Saturday, January 28

9:00 am via Zoom, Talmud study

10:30 Saturday morning service with full Torah Service

Parshat Bo

Exodus 10:1-13:16

### Friday, February 3

6:30 pm, Shabbat evening service

### Saturday, February 4

9:00 am via Zoom, Talmud study

10:30 Saturday morning service & Torah Study

Parshat Beshalach

Exodus 13:17-17:16

**Yahrzeits— January 6—February 4**

(Listings include the name of the loved one on the yahrzeit list and the name of the congregant or congregants remembering that loved one - asterisks indicate loved ones remembered with memorial plaques)

**Read on January 6&7, 2023**

Ilona Farkas\* (Yosef & Susan Lapid)  
 Aron Fiszbein\* (Abraham Fiszbein)  
 Edward Friedman (Mark & Stefani Singer)  
 Joan Glickler\* (Rachel Glickler-Duggins & Sean Duggins)

Henry Greenberg (Cyrille S. Kane)  
 Ira Hudson III (Cherri Hudson-Brown & Jeff Brown)  
 Harris B. Libby (Robert M. & Carla Libby)  
 Gary Mann\* (Alison Mann)  
 Sam Ross (Irwin & Barbara Ross)  
 Sonia Silverman (Jerald & Rochelle Silverman)  
 Sarah Spiegel (Sheri Spiegel & John Ragosta)  
 Sylvia Weiss \* (Harry & Diane Bass)

**Read on January 13&14, 2023**

Eleanor Abramowitz (Shari Abramowitz & Rabbi Evette Lutman)  
 George Gorelick\* (Abraham Fiszbein)  
 Ray Grossfeld (Beverly Ellen)  
 Alvin Krasner (Frima Marquez)  
 Dorothy Palanker (Allen & Eve Palanker)  
 Nancy Rees Brown (Marieka & Jeanne Brown)

**Read on January 20&21, 2023**

Jerome Deutschman\* (Ellen & Fred Torres)  
 Coleman Greenberg (Cyrille S.Kane)  
 Faige Jacobs (Rose Jacobs)  
 Asher Klaitman\* (Rita Polsky)  
 Warren Klein (Tom & Deborah Levy)  
 Aryll Edna Levy (Gary & Terry Levy)  
 Jeanette Marks (Rabbi Lawrence & Rhonda Karol)  
 Leon Markson (Linda Kruger)  
 Laura Metzger (Bryan & Lisa McCuller)  
 Richard Stern (Burt & Ann Berkson)  
 James Turnbull (Joanne Turnbull)

**Read on January 27&28, 2023**

Elaine Brown\* (Jeff Brown & Cherri Hudson-Brown)  
 Miriam Cutler (Allen & Michele Blum)  
 Shmuel Farkas\* (Yosef & Susan Lapid)  
 Herman B. Golden (Richard & Darlene Goldberg)  
 Morris Goldstein (Art & Wendee Lorbeer)  
 Katrina Ray (Meig Dickson & Max Wipson)  
 Evelyn Roselinsky (Lynn Zeemont)  
 Joseph Tashlik (Allen & Michele Blum)  
 Irene Zimmerman (Tom & Deborah Levy)

**Read on February 3&4, 2023**

Clinton Cook\* (Dee Cook)  
 Susan Friedman (Mark & Stefani Singer)  
 William Friedman (Mark & Stefani Singer)  
 Richard Garner (Ari & Carrie Swartz)  
 Zeenae Audrae Geller (Ruth Rubin)  
 Ruth Ginsburg (Martha Roditti)  
 Isaac Kruger (Linda M. Kruger)  
 Hesh Langner (Bernie Langner)  
 Pauline Lemelin (Michael & Stacey Hyman)  
 Jesse J. Muchnikoff (Stan & Gerie Muchnikoff)  
 Leonardo Oczon (Mark & Aggie Saltman)  
 Alvin Phinick (Mike & Karen Currier)  
 Russell Spingarn (Richard & Penny Spingarn)  
 William Stein (Bill Stein)  
 Arthur Stern\* (Burt & Ann Berkson, Arthur & Rebecca Berkson)  
 Leah Williamson (Michael & Barbara Mandel)



**Honor the memory of loved ones with a memorial plaque and mark celebrations and milestones (and also the memory of friends and family) by adding leaves to our Tree of Life.**



In order to ensure that the name of your loved one will be recited during services, we have instituted the following practices:

- The Hebrew dates for each week's Yahrzeits are listed in each Adelante.
- Names are read on the Shabbat **following** the Yahrzeit, or on the day, if it falls on that Shabbat.
- Hebrew vs. conventional (Gregorian) calendar: The temple's tradition is to base the Yahrzeits list on the Hebrew calendar. Those who wish to have a name read on a Friday night close to the conventional (Gregorian) calendar date are asked to please email or call the Temple office a few days prior to the service.

\*Asterisks indicate that a loved one has been permanently memorialized with a plaque in the Temple sanctuary. If you are interested in acquiring a plaque for your loved one, contact the Temple office. Current TBE members may purchase a plaque for \$300. Non TBE members may purchase a plaque for \$600.

## Ariella Zeitlin Concert

About 200 people had a great musical treat on Dec. 11 when Ariella Zeitlin (niece to Leora Zeitlin and Stuart Kelter) gave a high-energy concert of Jewish, Israeli, Yiddish, Broadway, and original music at the temple. The audience was much bigger if we include all those watching on the Facebook live-stream, including family and friends from the US, Canada, Israel, and, of course, from here in Las Cruces. Ariella was joined for several songs by her cousin, Amalia Zeitlin — and these two violinist-singers were quite the dynamic duo!

Many heartfelt thanks go to:

- Rabbi Evette, Nan Rubin, Lynn Zeemont and Susan Fitzgerald for helping Leora organize the event in a *\*very\** short time, and getting the word out to the media.
  - Luke Duddridge, Ned Rubin, Jeff Lewis, Avis Lewis, Stuart Kelter, Daniel Azizzian for setting up chairs and opening the social hall wall (and if I missed anyone, please let me know!). Also, thanks to Ned for taking lots of pictures.
  - Susan Fitzgerald for helping to staff the front table, and count up the donations afterwards.
  - Mark Saltman for arranging for the security guards, and Aggie Saltman for spreading the word to the TBE community.
  - Steve Haydu and John Schwendinger for tech support.
  - Alison Mann for reaching out to the El Paso community and the media.
  - Monika Kimball for her consistent enthusiasm over the last three years to make such an event happen.
  - Amalia Zeitlin for helping to promote the event far and wide, finding us the sound engineers, being interviewed by the Sun-News, and joining Ariella on stage for a few songs.
  - Ariella Zeitlin for a fabulous concert!
- Leora Zeitlin



TBE member Bernice Langner, who is Ariella's great-aunt, sings a verse of "Bei Mir Bistu Sheyn" in Yiddish before Ariella performs it in English



## HELP WANTED

Growing Jewish congregation (Temple Beth-El) needs assistance.

Must be crazy enough to enjoy constant daily interruptions, forgotten lunches, working past your designated quitting time, and a volunteer's salary!

A great sense of humor is a plus. Must be able to extreme multi-task, or at least be willing to try. Duties include but are not limited to taking messages off the phone, helping people coming into temple, and giving tours of the temple.

Benefits include great company and knowing that you are doing a huge mitzvah.

If interested, please call Cheryl Decker.

## Dear congregants,

If you would like to receive a 2022 giving statement, please email your request to Joel Siegel,

[treasurer@tbelc.com](mailto:treasurer@tbelc.com). Please note this statement will only reflect checks we have received through December 31st 2022. You may always adjust your giving total on your income tax return if you mail a check in late December and it is not reflected on the statement we send you. You may also ask if a certain check has been included on the giving statement so you can make the appropriate adjustment.

## Celebrating our Simchas

The Temple Beth-El Mitzvah Team sends best wishes to these members celebrating birthdays this month:

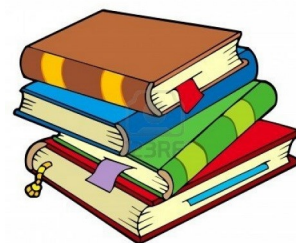
Henri Brown	Rachel Duggins
Sean Duggins	Jack Greenspan
Betsy Gubin	Robert Kimball
Danielle Kirschner	Jeff Lewis
Barbara Mandel	Ford Parkes-Perret
Rita Polsky	Donna Popky
Thomas Saiers	Bob Sanderson
Joel Siegel	Ellen Torres
Leora Zeitlin	

The Temple Beth-El Mitzvah Team sends best wishes to these members celebrating anniversaries this month:

We have no entries for January in our database

We would love to have more names in these lists. If you would like to have us acknowledge your occasion in the future please send birth month and anniversary month to Luke Duddridge at [LCDuddridge@hotmail.com](mailto:LCDuddridge@hotmail.com)

The Temple Beth-El short story discussion group invites you to join us as we continue our weekly readings and Zoom discussions. The next session will begin mid-January. If you love fiction, lively conversation and the company of fellow fiction lovers, this is the place for you. We meet on Tuesdays from 11:30 a.m. to 1 p.m. Las Cruces time. Our stories, which are emailed to participants each week, feature the writing of some of the world's best known Jewish authors, past and present. For more information, contact Jim Rosenthal at [jar529@gmail.com](mailto:jar529@gmail.com)



## **Donations through December 23, 2022**

### **General Fund:**

Anonymous

Barbara Brown, in honor of Karen Shevet  
Dinah's birthday

Daniel Allan, in memory of Evelyn Benowitz

Henri and Debra Brown, in memory of Richard  
Rycus

### **Rabbi Discretionary Fund:**

Erich Zameret

Marieka and Jeanne Brown, in honor of Rabbi  
Evette and Shari's arrival in Las Cruces, the  
religious school co-principals and faculty,  
and in memory of Emily Cohen

### **Biblical Garden Fund:**

Bill Stein and Sue Michelson, in memory of  
Irwin Michelson

### **Irving Batkin Memorial Scholarship Fund:**

Allen and Michele Blum, in memory of Harry  
Segal

### **Building and Grounds:**

Deborah Levy, in memory of Charles and Lillian  
Klein

## **TEMPLE FUNDS**

Donations are gratefully accepted for the following:

**General Operating Fund**—For the day-to-day operation of  
TBE.

**Biblical Garden Fund**—To provide the infrastructure for bibli-  
cal plants and trees, and bricks in the fountain meditation area  
and on the brick walkway.

**Rabbi Larry and Rhonda Karol Campership Fund**—Providing  
scholarships for Temple students to attend Jewish summer  
camp programs.

**The Mitzvah Team Fund**— to assist this voluntary team of  
Temple Beth-El members that, upon request and dependent  
upon availability, will provide non emergency support service  
to members of the temple.

**Social Action Fund**—For projects that benefit our community  
and Las Cruces and Southern New Mexico.

**Irving Batkin Memorial Scholarship Fund**—To broadly sup-  
port Jewish education, based on merit or need, through partici-  
pation in the TBE Religious School, camperships, and/or pur-  
suit of Jewish collegiate studies or rabbinical studies.

**Frances Williams Library Fund**—To provide books and infra-  
structure for the TBE library.

**Rabbi Gerald M. Kane Fund**—Provides funds to help further  
adult education and cultural programming at TBE.

**Temple Beth-El Religious School Fund**—Supports the regular  
and special programming planned by faculty, students and the  
Religious School Committee.

**Temple Beth-El Youth Fund**—Support for Youth activities at  
TBE.

**Rabbi's Discretionary Fund**—Used to meet a variety of philan-  
thropic requests as well as to supplement TBE programs.

Periodically the temple may list short-term projects or needs.  
Contributions that do not specify a project or fund will be added  
to the General Operating Fund. If you have a question or wish to  
contribute to a project not listed here, please contact our Temple  
Beth-El Treasurer, Michael Mandel.

## **“Have you considered a bequest to Temple Beth-El?”**

An important part of our future is represented by be-  
quests made by members.

Thoughtful bequests enable Temple Beth-El to retain  
the future of Jewish life for generations to come.  
From funding our Rabbi to scholarships at our religious  
school, your generous gift maintains our financial health.

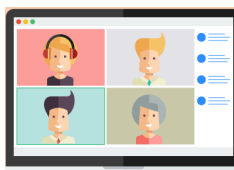
A simple codicil can be added to your existing will, if  
you wish to make a bequest, such as:

**“I give and bequest to Temple Beth-El, located in Las  
Cruces, New Mexico, the sum of \$ \_\_\_\_\_  
[or \_\_\_\_\_ percentage of my estate as finally determined  
for federal estate tax purposes].**

A will or codicil should be prepared by an attorney.

Please call the Temple office at (575) 524-3380 to dis-  
cuss including Temple Beth-El in your estate.

## **Donation Opportunity**



After 2+ years of dedicated service to  
the Temple, Steve Haydu and Marieka  
Brown are ready to pass the technology  
torch to a permanent employee. First,  
thank Steve and Marieka when you see  
them. Second, consider a donation to

the General Fund to help pay for us to continue  
broadcasting via Zoom and Facebook Live.

Temple Beth-El has hired John Schwendinger to perform  
the technology work. A paid position should improve  
reliability, where not many of us can step in with either  
the skill set or a commitment to every  
Friday service. The Temple is  
proceeding. The money is not in the  
2022-2023 budget and when disbursed,  
will be represented as an overrun. We are  
seeking on the order of \$1000 for the  
remainder of this Fiscal Year.





### Joining Temple Beth-El, and Then Joining In Temple Beth-El

Welcome to Temple Beth-El! We are absolutely delighted to meet you, as one of the new families inquiring about joining Temple Beth-El. We hope This synagogue will provide a warm and nurturing Jewish

community for you here in Las Cruces.

But now you are a member, then what? After someone joins as a member, as an individual or a family unit, how do you learn about the temple? What is the best way to introduce you to synagogue activities?

We do not have the best process for helping members get involved with ongoing temple activities or special events. But you should not have to hunt around to join in. Even without staff, Temple Beth-El is a busy place with many activities, and the functioning of our all-volunteer committees is critical to maintaining our ongoing activities. Your participation on any level will be very welcome!

**Religious Practices Committee** - As its name implies, this group develops, coordinates, and oversees the organization of our religious services. This committee was especially important during COVID, because during this period Temple Beth-El was without a full-time rabbi. Through the tremendous effort of our Religious Practices Committee, the temple was able to maintain ongoing religious services and holiday celebrations.

With Rabbi Evette now installed, the work of this committee is no less important to support her and keep congregants engaged with our religious practices. Hebrew is not necessary to join this committee, just interest in helping support our ritual and spiritual needs. (Stuart Kelter, Chair)

### Social Action/Adult Ed Committee-

These two committees merged because the work and membership of these two groups overlapped substantially. The combined committee now develops programming not only for the congregation but often including the broader community, reflecting our interest in such things as candidate forums before elections; support for local immigrant services; serving Christmas breakfast at Camp Hope; and various programs on Jewish history, religion, and culture. This committee just requires an interest in bringing social action issues and Jewish-related programs to the synagogue. (Ned Rubin, Chair)

**Religious School-** With a growing number of students, there is a committee of parents and teachers who oversee the curriculum and social activities. These include projects for everyone such as Purim gift bags, and joint programs with students and families from Temple Mount Sinai in El Paso. The religious school is always looking for teachers and guests who can share knowledge and experience with our students. (Rebecca Berkson, Sheri Spiegel, Co-Principals)

Other committees are involved with ongoing temple operations.

**Membership Committee-** is responsible for meeting with prospective members, introducing them to the synagogue and welcoming them when they join. The committee welcomes new ideas for making this an enjoyable process. (Martha Roditti, Chair)

**Ways And Means Committee-**is directly involved in organizing fundraising activities, such as the Matzah Ball Open golf tournament, and the annual Silent Auction, which features items contributed by members such as an evening of gin tasting; yoga, or tai chi lessons; and a home prepared Northern Italian gourmet dinner. No prior fundraising experience necessary! (Dee Cook, Coordinator)

Our **Sisterhood** and **Mensch Club** are both lively groups. As needed, there are also ad hoc or temporary committees. For example, in order to prepare for new rabbi during COVID, we had a **Strategic Planning Committee** that led us through a number of focused discussions on temple issues. This was followed by a temporary **Rabbi Search Committee** constituted specifically for that task.

And just in December, we had a wonderful art show fundraiser, put together by an ad hoc group when the opportunity presented itself; and another ad hoc group hastily produced the special concert by Ariella Zeitlin which was such a big success!

The point is that these and other excellent, hardworking committees keep the temple going. There's a lot of opportunity here to get involved, or even to start something new if you're ready to put in some time!

Here I want to mention one more project - the **Jewish Food and Folk Festival**, or JFFF. Last held in 2019, the event featured an array of Jewish foods, folk dancing, music, and a bazaar. A huge event for Temple Beth-El, more than 1000 people enjoyed the day. It was a tremendous amount of work, but virtually everyone in the congregation participated to make the day a success. Back by popular demand, the board would like to plan a new and improved post-COVID JFFF in April after Passover. The first organizing meeting will be January, so look for the announcement soon.

I hope you will consider participating in this event, I know there is a job for everyone! At the same time, I would like to encourage you to find out more about the working committees at Temple Beth-El and to check out any of those you might be interested in. Contact me or the committee chair, and check the ADELANTE for events and activities. There are always things to do!

Happy new year!  
Nan Rubin, President  
Temple Beth-El, Las Cruces  
[president.tbclc@gmail.com](mailto:president.tbclc@gmail.com)

[EDITOR'S NOTE: If you are not a new to the temple member and would like to become more involved, there is always a space! Also, see Cheryl's ad for help in the office.]

## Temple Beth El Board of Directors Report, December 15, 2022

- A motion was proposed that Service animals and Certified Support animals that have documentation be allowed in the sanctuary. The Rabbi requested that service dogs have a vest or ID that states that they are a service dog. Prior approval if possible is also helpful. The motion was passed unanimously.
- The treasurer reported that new membership dues and an anonymous donation of \$10,000 will positively impact our finances.
- The board approved to accept new members, Gary and Terry Levy. Welcome!
- Rabbi Evette attended a URJ seminar on how small synagogues like ours (or with new Rabbis), meet challenges such as member participation, adult bar mitzvah, getting congregants to D'var Torah, etc. An outcome is that there needs to be a congregant group of a few people who meet with the Rabbi on a regular basis to exchange ideas, to create feedback on what is going well, and to make suggestions on how to improve and proceed.
- The Ways and Means committee (with designated event leaders) will again host a Silent Auction. Date to be announced.
- President Nan Rubin had several items to report. The performance by Ariella Zeitlin was attended by over 150 people. Any excess money from the concert will go back to the congregation. Las Cruces Sun News was instrumental in promoting this event. Nan also talked about the possibility of bringing back the Jewish Food and Folk Festival (JFFF). We will need volunteers. Planning and kick off will be in January. We are looking at dates in late April as possibilities for this event.
- We plan to have a list of TBE Committees in the Adelante. Each committee will be listed with the group leader and an invitation for all congregants to get involved with a committee (or two) of interest.

## Camp Hope Breakfast

Thanks to this long list of volunteers who made Christmas Breakfast at Camp Hope happen. Some hauled tables, chairs, the grill and boxes of supplies, some set up, some cooked, and some sat and visited with our guests. There might have been cold hands and feet, but there were full bellies and warm hearts. Thanks again to all who came and helped with this mitzvah.

Rabbi Evette Lutman, Rose Jacobs, Terri Sugarman, Daniel Azizian, Karen Hutchinson, Steve Haydu, Marjorie Siegel, Avis Lewis, Jeff Lewis, Dave Decker, Elizabeth Lewis, Beth Tierney, Lindsay Tierney, Eric Popky, Donna Popky, Jerel Griffin, Nicole Griffin, Jane Grider, Mitch Lewis, Gary Levy, Joel Siegel, Elliot Katz, Karen Shevet-Dinah

-Susan Fitzgerald



# TBE Religious School

We just had our last scheduled lesson for Fall 2022. What a semester! We have had 8 new students enroll this semester, 7 of them from our outreach efforts. We have 2 more about to enroll. This last Sunday, a 7-yr-old, who moved with her family from Florida, stopped in for class. It was a very pleasant surprise, and they would like to enroll as well. That would bring us to 19 students.

This Sun 12/18, we have an overnight Hanukah Pajamakah where we will light candles, play games, dance, eat latkes and make blankets as part of our tzedakah project for Camp Hope residents. A big thanks to Stefani Singer who is heading up this revival.

Four of our students have started volunteering weekly at Four Paws and a Wake-up, a training facility for service dogs. They were inspired to volunteer there through one of our field trips to the facility, following apple picking for Rosh Hashanah.

We would love for you to get to know our students! If any congregants want to volunteer on Sundays at 8:45-9:15 am to greet students and help us set up for breakfast, or if you'd like to donate breakfast items like fresh fruit, we would greatly appreciate it! You are welcome to stay for our community time until 9:35 am as we play games to review what we learned the previous week. Just let us know in advance and we can set a date!

We are proud of the progress our students have made with the new curriculum and the fun we've had thus far. We're excited for what's to come! -Rebecca Berkson & Sheri Speigel



On December 4, Beth and Morgan Tierney's class made challah to go in the Shabbat box which goes home with a different student in the class each week. We shared one that day with all students and staff.



December 18th, "Pajamakah" The kids had a blast! Thank you so much to Stephani and thank you also to Rabbi Evette and Mark Singer who stayed overnight with us, Heather Marancenbaum who oversaw the blanket project, Rebecca Berkson and Sheri Speigel who helped with food and

John Ragosta who fried our latkas. Thank you to anyone else that I forgot to mention. -Beth Tierney

## Temple Montefiore, Las Vegas, NM

### Rededication January 18, 2022

By Cheryl Decker

David and I had previously known about the purchase by the Las Vegas Community of Temple Montefiore from the Catholic Diocese for several months prior to making the decision to attend the rededication on Sunday, Dec. 18, 2022.

While packing the car for our trip, it suddenly dawned on me that we would actually be attending the 2<sup>nd</sup> dedication of a temple on the first day of Chanukah, in the first temple built in what was NM Territory. The symbolism did not escape me, and I hurriedly packed our menorah and candles. We left Las Cruces at 10:00 Saturday morning and arrived in Las Vegas at 4:00.

After settling in at the historic Plaza Hotel, our next journey was to locate the temple on 8<sup>th</sup> St. After several mis-turns, we found the 138-year-old temple which sits on a corner lot with eight wide concrete steps and a wheelchair ramp at the entry. A vacant building now, but which will once again be dedicated as Temple Montefiore. We were excited to have the opportunity to take pictures of the temple during daylight.

The gray overcast sky belies the stoic beauty of this Temple. We took pictures of the Temple's exterior, the grounds and the historical plaque which had been left in place, undamaged for all these years.

After breakfast the next morning, I suggested to David that we might be able to drive by the temple "just one more time." Fortunately, there was a car parked in the side lot. Again we stopped, but this time we entered the building. A woman was finishing setting the chairs and tables for the night's service and welcomed us in. I asked if she minded if I took a few pictures while there was sufficient light.

Where Stations of the Cross once hung, the unadorned walls are painted a soft cream. The dark wooden Ark is still intact, and the bima appears to be as originally constructed. There are graceful, period style hanging lamps with softly colored ivory glass shades. The lamps hang approximately eight feet from the ceiling, casting a soft warm glow throughout the sanctuary. The ceiling has a gentle curve, much like Temple Beth El's.

But the temple's one feature that caught my eye was the windows. Ten in all, five on each side. Arched, the stained glass of old with soft, pastel colors and simple geometric designs, each window different. Windows that had withstood 134 years of the northeastern weather elements of Las Vegas. Stately, tall, and slender these are sentinels of this temple.

The mezuzah hanging and rededication was to start at 5:30. The sun sets earlier in Las Vegas, and when we arrived at 5:00, the streets were lined with cars. The steps, ramp, and sidewalks surrounding the temple were full of attendees, and by 5:30 it was totally dark.

Rabbi Paul Citrin officiated at the mezuzah likbo'a and the rededication. Prayers and comments regarding the temple's history were given. Rabbi Citrin requested the Shofar be blown to start the ceremony. Continuous blasts summoned the emissaries of Temple Montefiore to bring the Torahs onto the bima. I noticed that the people carrying the Torahs were not smiling. It was a solemn procession. The three Torahs were gently and lovingly placed back into their home. Immediately upon the closing of the Ark doors, Jacob Wax, a well-known accordionist, encouraged the start of the celebration with Klezmer songs. The once somber mood changed to one of jubilation! Handshakes and hugs were exchanged, joyous clapping of hands in time to the music. Had there been room, I'm certain we would have joined hands and danced. When the celebration quieted, we were encouraged to bring our menorahs forward to the waiting tables. Rabbi Citrin led the prayers for the first night's Chanukah celebration. It was the first time in almost 72 years that the newly rededicated Temple had a service and brought joy and hope to the congregation.

Nancy Terr, a crucial member of the purchasing committee, thanked everyone for their support and explained that now the real work will begin.

The Temple needs help with repairing/restoration of the damaged, neglected areas, painting of the exterior, trimming long neglected trees and landscape. Nancy said just keeping the lights on would be a challenge, but a challenge they would meet. This congregation is not a prosperous community, but it is a community with a rich history which deserves to be preserved.

So, the question becomes, is Temple Beth El willing to assist in helping keep the temple under Jewish care and control? Could we establish a fund with the purpose of helping support some of their needs? Can we provide volunteers to paint, fix the broken, beautify the landscape, etc.?

What will our collective conscience require us to do? Hopefully, Tikkun Olam will extend to Temple Montefiore in Las Vegas, NM.



*Gail Braverman is a Board Member at Temple Emanu-El in San Diego. Gail writes "Community Corner", for her synagogue's monthly newsletter and has graciously offered to share her columns with us. She is a Marriage & Family Therapist.*

## THE JOYS OF JOURNALING

Gail L. Braverman, LMFT, Temple Board Member

I know journaling is not for everyone. I also know finding time to journal can be daunting. That being said, I am still going to point out the joys of journaling.

Journaling is a practice of taking time to write and reflect on your thoughts, feelings, and experiences.

I have been a journaler for many years, but these last few years I have relied on it more and more. Journaling has helped me clarify my thoughts, reduce my anxiety, manage these uncertain times, and to lighten up.

This article is an invitation for you to use writing as a way of healing, as a tool to process emotions that can only be understood as they flow out onto the paper.

Journaling is a powerful tool for personal growth, self-discovery, improved health and creative expression. It is a life enhancing practice.

Journal writing is something you do your own way and make it what you need it to be. There are no rules. It is a friend anytime, anywhere. It is a tool to help reduce stress, and cope with depression or sadness. Journaling can help you work out problems and bring you insight. It helps you discover the wisdom and intuition inside of you.

Grab yourself a notebook, paper, or a computer. I prefer writing by hand. I find myself more involved physically and emotionally.

Fortunately, the process of journaling isn't a difficult one to start. Just a few minutes per day or two or three times per week. Do what is right for you. There are no "shoulds."

I use what are called "prompts" in the groups that I facilitate to get participant's writing going. It can be a word, a phrase, a quote, a poem, a picture, or an object. You can find prompts everywhere. Your writing will teach you what you need.

Encouragements:

Date your journal entry.

Choose tools that support your journaling. Have a favorite journal and pen that you enjoy writing with.

Listen to yourself about what you want to write.

Consider the privacy of your journal. Put it in a private place if you don't want someone to read it.

Don't judge, criticize or critique your writing. Just write!

Journaling can help you to love and fully accept yourself exactly as you are.

Be curious, be a journaler!

Reflection: Pick out an object that you can use as a prompt for your writing.

Today's Practice: Take five minutes and write about the object you picked.

Comments are welcomed at [gbrave3333@aol.com](mailto:gbrave3333@aol.com)

# JANUARY 2023

Sun	Mon	Tue	Wed	Thu	Fri	Sat
Tevet 8 1 <b>NO RELIGIOUS SCHOOL</b>	Tevet 9 2	Tevet 10 3	Tevet 11 4 Tanakh Study 10:15am via Zoom	Tevet 12 5 Mussar 12:00 pm	Tevet 13 6 Shabbat Evening Services 6:30 pm	Tevet 14 7 Talmud Study 9:00 am Shabbat Service & Torah Study 10:30 am
Tevet 15 8 <b>Religious School            9:00 am</b>	Tevet 16 9	Tevet 17 10	Tevet 18 11 Tanakh Study 10:15am via Zoom	Tevet 19 12 Mussar 12:00 pm	Tevet 20 13 Shabbat Evening Services 6:30 pm	Tevet 21 14 Talmud Study 9:00 am Shabbat Service 10:30 am
Tevet 22 15 <b>NO RELIGIOUS SCHOOL</b>	Tevet 23 16	Tevet 24 17	Tevet 25 18 Tanakh Study 10:15am via Zoom	Tevet 26 19 Mussar 12:00 pm TBE Board meeting 6:00 pm	Tevet 27 20 Shabbat Evening Services 6:30 pm	Tevet 28 21 Talmud Study 9:00 am Shabbat Service & Torah Study 10:30 am
Tevet 29 22 <b>Religious School            9:00 am            Trivia Event            2:00-4:00 pm</b>	Shevat 1 23	Shevat 2 24	Shevat 3 25 Tanakh Study 10:15am via Zoom	Shevat 4 26 Mussar 12:00 pm	Shevat 5 27 Shabbat Evening Services 6:30 pm	Shevat 6 28 Talmud Study 9:00 am Shabbat Service 10:30 am
Shevat 7 29 <b>Religious School            9:00 am</b>	Shevat 8 30	Shevat 9 31				

3980 Sonoma Springs Avenue  
Las Cruces, NM 88011

Phone: 575.524.3380  
Fax: 575.521.8111

President:  
Nan Rubin

Rabbi:  
Evette Lutman

Rabbi Emeritus:  
Lawrence P. Karol

The Temple Beth-El Newsletter is produced regularly at Las Cruces, New Mexico. Editor: Beth Tierney. Copy Editors: Nan Rubin, Rabbi Larry Karol, Aggie Saltman and Alison Mann. Circulation: Cheryl Decker. We welcome Adelante sponsorships by or for Temple members and non-members. Sponsorships can be mailed to the Temple; receipts are provided upon request. We reserve the right to edit all sponsorships. Non-member sponsorships (with no ad) are \$25/year. Annual sponsorship rates are as follows: 2x3 business card \$150; Quarter page \$300; Half page \$600. For information about sponsorships, please contact the Temple Office.

**Temple Beth-El and “Adelante” are on the web at  
[www.tbclc.org](http://www.tbclc.org)**

**January, 2023**



**Temple Beth-El  
3980 Sonoma Springs Avenue  
Las Cruces, NM 88011**