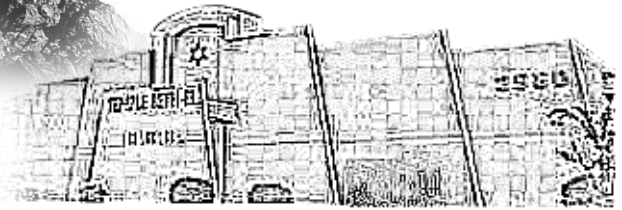


Adelante!

A Monthly Publication for Temple Beth-El,
Las Cruces, New Mexico



AUGUST 2024 (TAMMUZ-AV 5784)

First Fridays at TBELC Worship/Music/Torah AND

This month join us to celebrate with
AMALIA ZEITLIN
before she moves to Israel

August 2nd at 6:30pm



Religious School Open House Sunday, August 25 10 AM-12 PM Food! Games for all! Information!

Classes begin Sept. 8. Spaces still open for all grade levels. Scholarships available— your children's involvement enriches our community. For more information before the event, contact our co-principals:

Sheri Spiegel sherispiegel@gmail.com or
Rebecca Berkson becca.berkson@gmail.com

*Youth Group Meeting to follow @ 12:30



Worship Schedule

Services are in person but will also be available by Zoom and Facebook live.

You can watch the Facebook on this page:

<https://www.facebook.com/pages/category/Synagogue/Temple-Beth-El-115816285166004/>

Zoom invites for all services, and any text to follow, will be sent out weekly.

If you do not have a siddur at home, you can purchase a print copy or an e-book, (less expensive option) which can be viewed on any device using the free Kindle App. These can be bought from the Central Conference of American Rabbis at this link

<https://www.ccarnet.org/publications/mishkan-tfilah-for-Shabbat/>

Friday Evening Kabbalat Services:

6:30 pm

Saturday Morning Services:

10:30 am

1st and 3rd week, shorter service and Torah study.
2nd and 4th week, longer service with full Torah service.

Times will occasionally vary.

See calendar for current schedule.

Celebrating our Simchas

[The Temple Beth-El Mitzvah Team sends best wishes to these members celebrating birthdays this month:](#)

Dee Cook	Tom Levy
Elizabeth Lewis-Olson	Nan Rubin

[The Temple Beth-El Mitzvah Team sends best wishes to these members celebrating anniversaries this month:](#)

Avis and Jeff Lewis
Karen and Michael Lieberman
Ellen and Fred Torres
Rabbi Larry and Rhonda Karol

We would love to have more names in these lists. If you would like to have us acknowledge your occasion in the future please send birth month, and anniversary month, to admin@tbelc.org

Study Opportunities

In person and by Zoom except when otherwise specified. Links sent weekly.

Talmud Study– Saturdays at 9:00 AM

Lay led by Bryan McCuller.

Short Story Group– Every other Tuesday at 11:30 am via Zoom

This is a discussion group led by former congregant Jim Rosenthal. Jim e-mails stories by Jewish authors to participants each week. To join, contact Jim at jar529@gmail.com.

Tanakh study –Wednesdays at 10:15 am via Zoom

Tanakh Study, led by TBE Rabbi Emeritus Larry Karol, is taking a brief summer break. Sessions will resume on Wednesdays at 10:15 am via Zoom beginning on Wednesday, August 14. Contact Rabbi Karol (rablpkarol@gmail.com) to join.

Jewish Literacy and Mussar are currently not being offered. A new set of classes will begin in the fall.

“Have you considered a bequest to Temple Beth-El?”

An important part of our future is represented by bequests made by members.

Thoughtful bequests enable Temple Beth-El to retain a future of Jewish life for generations to come.

From funding our Rabbi to scholarships at our religious school, your generous gift maintains our financial health.

A simple codicil can be added to your existing will, if you wish to make a bequest, such as: **“I give and bequest to Temple Beth-El, located in Las Cruces, New Mexico, the sum of \$ _____ [or _____ percentage of my estate as finally determined for federal estate tax purposes].”**

A will or codicil should be prepared by an attorney.

Please call the Temple office at (575) 524-3380 to discuss including Temple Beth-El in your estate.

Yahrzeits– August 1, 2024– August 31, 2024

Listings include the name of the loved one on the yahrzeit list and (in parentheses) the name of the congregant or congregants remembering that loved one -asterisks indicate loved ones remembered with memorial plaques

Read on August 2 & 3, 2024

Jean Weinberg (Rob Goldsteen and Anne Weinberg)
Kathryn Goldstein (Art and Wendee Lorbeer)
Arnold M Heart (Nancy Bergman)
David Williamson (Michael and Barbara Mandel)
Elijah Lee Newman David Newman and Jon Bairnsfather)
Bernard Singer (Mark and Stefani Singer)
Mariette Brown (Henri and Debra Brown)
Anne H Bergman* (Nancy Bergman)
Earnest Hightower (David and Jon Newman)
Sherlee Seglin (Eric and Donna Popky)

Read on August 9 & 10, 2024

Manny Blumkin*
Lillian Krasner* (Frima Marquez, Jeff Marquez)
Sam Maness (Mark and Stefani Singer)
Ellie Greenberg (Cyrille Kane)
Logan Pearson (Jeff Brown and Cherri Hudson-Brown)
Carmen Freudenthal*
Shirley Popky (Eric and Donna Popky)
Florence Batts (Rabbi Evette Lutman and Shari Abramowitz)
Thomas Brankman (Philip and Sally Alkon)
Dottie Davis (Sam Klein)
Dorothy Rashal*
Magda Farkas* (Yosef Lapid)
Patrick Fitzgerald (Susan Fitzgerald)
Scott Klein (Sonny and Rosie Klein, Sam Klein)

Read on August 16 & 17, 2024

Jacob Klempner (Dee Cook)
Herzel Nezer (Yael and Jordan Lavender-Smith)
Leonard Pritikin*
Esther Seidman*
Rea Bienstock (Stan and Gerie Muchnikoff)
Marion Deutschman* (Ellen and Fred Torres)
Meyer Seidman*
Charlotte Pollack*
Solomon Levy (Gary and Terry Levy)
Jay Dean Smith (David Newman and Jon Bairnsfather)
Howard McKinley Dizard (Nicole and Jermel Griffin)
Howard Siegel (Joel Siegel)
Chana Sarah Langner (Bernice Langner, Stuart Kelter and Leora Zeitlin)
LaVerne Perry (Nicole and Jermel Griffin)

Read on August 23 & 24, 2024

Esther Orel (Sheri Spiegel and John Ragosta)
Jay Druxman* (Sonny and Rosie Klein, Sam Klein)

Cecilia Guller* (Abraham Fiszbein)
Gary Kenoff (Robert and Carla Libby)
Rose Wechter* (Jeff Steinborn)
Gloria Hudson (Jeff Brown and Cherri Hudson-Brown)
Fred Silverston*
Jacob Aboulafia*
David Steffen (Jill Kerr)
Gail Bergman (Nancy Bergman and Greg Artman)
Lester Sheen (John Busby and Barbara Sheen)
David Zeemont (Lynn Zeemont)

Read on August 30 & 31, 2024

Edward Palanker (Allen and Eve Palanker)
Mary Shickler*
Thelma F Goldberg, (Richard and Darlene Goldberg)
Milton Kirschner (Bob and Judy Kirschner)
Cheryl S. Ryave Radov (Roslyn Richman, Selma Ryave)
Jan Alkon Olson (Philip and Sally Alkon)
Laurel (Batkin) Cahn* (Michael Batkin)
Philip Greenberg (Cyrille Kane)
Gina Libo* (Paul Feil)
Eva Rayblatt (Rose Jacobs)
Samuel Davison*
Morty Horwitz (Ellen and Fred Torres)
Howard Klein* (Sonny and Rosie Klein, Sam Klein)
Dorothy Quinn (Patrick and Susan Quinn)

Condolences to:

The family of Ingeborg Gantert, mother of congregant Susi Kolikant, who passed away on July 5, 2024 at the age of 90. Ingeborg is survived by her daughter, Susi Kolikant, her son, and grandchildren.
May her memory be for a blessing.

In order to ensure that the name of your loved one will be recited during services, we have instituted the following practices:

- The Hebrew dates for each week's Yahrzeits are listed in each Adelante.
- Names are read on the Shabbat **following** the Yahrzeit, or on the day, if it falls on that Shabbat.
- Hebrew vs. conventional (Gregorian) calendar: The temple's tradition is to base the Yahrzeits list on the Hebrew calendar. Those who wish to have a name read on a Friday night close to the conventional (Gregorian) calendar date are asked to please email admin@tblc.org or call the Temple office.

*Asterisks indicate that a loved one has been permanently memorialized with a plaque in the Temple sanctuary. If you are interested in acquiring a plaque for your loved one, contact the Temple office. Current TBE members may purchase a plaque for \$300. Non TBE members may purchase a plaque for \$600.

Shalom,

Many of us have been on vacation or have been visiting family (or both). As school resumes, we used to feel Fall approaching. Not quite the same feeling here now. We may have more one-hundred-degree days, and hopefully, more monsoon rains. We do, however, always welcome coming home. As Dorothy says, in *the Wizard of Oz* “there’s no place like home.”

Temple Beth El is your home for prayer, learning and fellowship. I recently read a poem by Ronda Shiffirin, Congregant of Temple Shaarai Shomayim, that made me think of this.

I slipped into the Temple like a pair of old shoes—

It was comfortable.

It felt right, supportive.

I belong here,

I had been away for some time—

It felt good to be back to my roots,

My ancestors, my Bubbie,

Back home.

Soft and comfy—

It takes the pressures of life off my tired feet,

From my frazzled mind,

Out of my aching heart.

The music lifts my spirits—

Takes away troubling thoughts,

Fills my body,

Refreshes my soul.

Old shoes have value—

They still bring comfort,

Remind you of days past,

Bring relief and the warmth of family.

As you think about returning to Temple what words come to mind? I think of spirituality, friendship, opportunities for learning, teaching, leadership, tikum olam.

Please email me words or phrases that are meaningful to you at fleishmandiane@gmail.com.

Enjoy August and the special events coming up. We will honor and wish a fond farewell to Amalia Zeitlin as she embarks on a special year in Israel, and celebrate the Bat Mitzvah of Ariel Lavender Smith. And, of course, First Friday. Check your email for dates and times.

Thank you to all who have responded to our request for increased pledges. It has been gratifying to know how much you care about our community.

Shalom,

Diane, President, Temple Beth-El

Dear Esteemed Sisters and Readers of the TBE Community,

Your Council worked together to bring you a memorable Membership Brunch on July 14th. Lynn Zeemont stepped up as coordinator and made all the arrangements with the Picacho Country Club. The Mimosas were flowing, the food was tasty and the scented candles were divine. We welcomed over 40 beautiful ladies. Look at all the smiling faces.

Frances Williams gave us a precious photograph of the original Sisterhood group and spoke about our history. Tina Wolfe, from the WRJ, spoke about a September weekend event in El Paso, and Marla Cohen, spoke representing the El Paso and Las Cruces Jewish Federation. Thank you for attending, and for those who missed it for unforeseen reasons, we missed you and look forward to seeing you next time!

We have a lot of ideas brewing once we finish with the High Holy Days. Thank you for signing up to bring a dessert for the RH Dessert Oneg and/or a dish for our Yom Kippur Break the Fast. If you did not sign up yet, PLEASE contact Lynn Zeemont and she will tell you what options are still open. We do need all your help. Also, please volunteer to help with set up and clean up at both holidays. We could use about 6 or 8 of you. And fyi, if we don't hear from you, you will definitely hear from us. :-)

Our next Council meeting is slated for Thursday, August 8. We have been meeting in the late afternoon, but a few of you have noted that an early evening meeting will be easier to attend, so, to accommodate you who work, TIME TO BE ANNOUNCED. We will be discussing all the details for the upcoming High Holidays and we would love more faces at the meeting and more hands to help out.

What more can we say? Let's do more together.

Your Sisterhood Council



Minutes from Temple Beth-El Board of Trustees Meeting July 18, 2024

*An invocation was given by Rabbi Evette Lutman

*President, Diane Fleishman reported:

-that she spoke with representatives from the NM Jewish Community Foundation and they offered several opportunities for our community including ADL persons speaking to local schools about anti-Semitism.

-NMSU students are interested in establishing a Hillel House on campus. The Board is helping to search for a Faculty Advisor to assist.

*Rabbi Lutman reported:

-that our First Friday services have been very successful and well attended. She also distributed a calendar of Holidays and Special events for the next year.

*Treasurer, Joel Siegel reported:

that dues are coming in steadily with many congregants giving more than the 10% increase requested. We will begin to use a new app, "Payquick" to receive future payments.

-Lenore Hindin has made a very generous donation of \$10,180 to the temple.

*Aggie Saltman is looking for NMSU students who can help us recreate our website. The Board is looking for members who are familiar with web design and would help with keeping the site updated.

*The Library Committee is working to update and create a more user friendly space for members.

*There is a new committee working to rewrite the TBE Constitution. They will meet and report back to the Board with findings by December.

*Paula Simonson was approved as a new member. Welcome!

Respectfully Submitted,
Debbie Leyndyke
Reporting for Sheri Spiegel, Secretary

Temple Beth El Final Profit and Loss, Fiscal Year 2023-2024

Our congregation concluded FY 2023-2024 on June 30, 2024. Net income was \$63,791.46, aided by several extraordinary donations. First was the 2023-2024 special appeal which brought in \$42,876 among all donors including the \$20,000 in matching funds. In addition we had a non-member donation of \$10,000 in the wake of October 7, \$10,000 in new challenge grant money from Bernice Langner, \$10,000 toward the Biblical Garden fund, an anonymous member donation of \$8,000, and another for \$5,000. Our pledge revenue was healthy but actually below expectation due to hardships and loss of members. Major fundraisers, the Matzo Ball Open, Silent Auction, and Rummage sale all contributed to our success. Thank you to all congregant donors of money and valuable services; everyone contributes and everyone is appreciated!

If you are a member, your Adelante is accompanied by the final P&L statement.

-Joel Siegel. Treasurer



Calling All Artists and Crafters

SAVE THE DATE

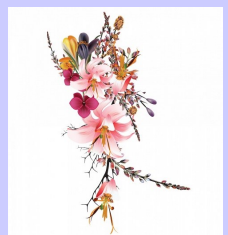
**ARTISANS MARKETPLACE
AT TEMPLE BETH-EL**

Sunday, December 8, 10 am - 4 pm

CONTACT:

Shari Abramowitz
akitche@maven@yahoo.com

Donna Popky
dlpmsw@gmail.com



Editor's Corner



Shalom Chaverim!

In my e-mail each day I receive “the word of the day.” I do not remember signing up for it but because I am a word nerd, I keep it. Most days, they are words that I have never heard and cannot imagine using. Some days, it is a word that is in my everyday vocabulary. But this past Friday, having this subscription truly paid off. The word was “Nachas- noun: 1. Pride or gratification, especially at the achievements of one's children. 2. Congratulations. Word Origin-Yiddish, early 20th century”

Folks, we have made it. We are truly entering the mainstream. While I disagree with the spelling of nachas, I felt a strong feeling of Jewish nachas at seeing the word in my inbox. And this is not the first time in recent days that I have witnessed Yiddish outside the Jewish community and New York. Recently, my daughter and I were at Grounded, kibbitzing and having a nosh and overheard a group of non-Jews talking about how much they love Yiddish for its expressiveness. Kvell!

We have also been collecting several mainstream books which are Jewish. The first is “The Heaven and Earth Grocery Store”, by James McBride, which centers on the lives and experiences of the residents of Chicken Hill, a poor town in Pennsylvania which is largely Black and has a small Jewish population. It is set in the late 1930's but is not a Holocaust novel but instead is about how neighbors interact and the extraordinary instances where they come together outside their own ethnic groups.

Another such book is “Tomorrow and Tomorrow and Tomorrow” which is about people in the computer gaming industry. So, in this case, the Jewishness is not central but instead, that 80% of the characters happen to be Jewish.

What is extraordinary to me in both cases is that both of these books are wildly popular. “Tomorrow and Tomorrow and Tomorrow”, being a book of the year and “The Heaven and Earth Grocery Store”, being Barnes and Noble's current book of the month.

So there you have it, these things may be small but it is wonderful to see the Jewish experience being mainstream.

And with that, I wish all of you and your mishpucha a month free of Tsuris. See you at Shul!

-Beth Tierney

Donations through July 14, 2024

General Fund:

Evelyn and Murray Bruder, in memory of Michael Bruder
Ann Berkson, in memory of Dora Stern
Ann Berkson, in memory of Milton Berkson
Joel Siegel, Langer Challenge Grant
Jacob and Susi Kolikant, in memory of Marion Gantert
Martin Widjaja
Steve Haydu, in memory of Karen Hutchison
Alison Mann, Langner Challenge in memory of Sarah Meltzer Smalley
Henri and Debra Brown, in memory of Mariette Brown
Wednesday Breakfast Group
Tom and Deby Levy for the Langer Challenge, in memory of Kim Klein Segura, Norma Klein, and Burt Berkson
Joel Siegel, in memory of family

Sisterhood Fund:

Marla Cohen

Rabbi Larry and Rhonda Karol Campership Fund:

Lynn Zeemont, in memory of Ella Gauzy

TEMPLE FUNDS

Donations (monthly acknowledgements are listed on the previous page) are gratefully accepted for the following:

General Operating Fund—For the day-to-day operation of TBE.

Biblical Garden Fund—To provide the infrastructure for biblical plants and trees, and bricks in the fountain meditation area and on the brick walkway.

Rabbi Larry and Rhonda Karol Campership Fund—Providing scholarships for Temple students to attend Jewish summer camp programs.

The Mitzvah Team Fund— to assist this voluntary team of Temple Beth-El members that, upon request and dependent upon availability, will provide non emergency support service to members of the temple.

Social Action Fund—For projects that benefit our community and Las Cruces and Southern New Mexico.

Irving Batkin Memorial Scholarship Fund—To broadly support Jewish education, based on merit or need, through participation in the TBE Religious School, camperships, and/or pursuit of Jewish collegiate studies or rabbinical studies.

Frances Williams Library Fund—To provide books and infrastructure for the TBE library.

Rabbi Gerald M. Kane Fund—Provides funds to help further adult education and cultural programming at TBE.

Temple Beth-El Religious School Fund—Supports the regular and special programming planned by faculty, students and the Religious School Committee.

Temple Beth-El Youth Fund—Support for Youth activities at TBE.

Rabbi's Discretionary Fund—Used to meet a variety of philanthropic requests as well as to supplement TBE programs.

Ritual Items Fund— For repair and maintenance of ritual items used during services such as Torahs, Tallitot and the like.

***Bernice Langner Challenge:** Bernice Langner is pledging to match both member and non-member donations dollar for dollar up to \$10,000 for donations received through December 31, 2024. *

Periodically the temple may list short-term projects or needs. Contributions that do not specify a project or fund will be added to the General Operating Fund. If you have a question or wish to contribute to a project not listed here, please contact our Temple Beth-El Treasurer, Joel Seigel.

El Paso Sisterhood is pleased to announce that we are hosting the Women of Reform Judaism Pacific District Southwest Area Event on September 13-14-15 at Temple Mount Sinai, 4408 North Stanton, El Paso. Ladies from the 8 sisterhood groups in New Mexico, Arizona, and Nevada will be attending for a full day of learning, prayer, singing, meditation and much more. Meet people from all over the Southwest. Mark your calendars now.



*Registration and Workshop Details
Coming Soon!*

Thank you to Penny Spingarn for the beautiful quilt of Noah's Ark she lovingly created for the students of Temple Beth-El.



BOARD OF TRUSTEES 2024-2025

- President-Diane Fleishman
- Vice-President-Jeff Lewis
- Secretary- Sheri Spiegal
- Treasurer- Joel Seigel
- Martha Roditti Lynn Zeemont
- Donna Popky Mark Singer
- Deb Leyndyke Wendee Lorbeer
- Debbie Levy
- Bill Stein (Mensch Club)
- Dee Cook (Sisterhood)

**HELP
WANTED**



We are looking for pictures of activities at TBE as we update our webpage. Please send them to Aggie Saltman at mzaggieo@gmail.com

**Visit the Temple Beth-El Website—
www.tbelc.org
for in-depth information about Temple
and its programming and updates on
current Temple events**

Temple Beth-El is on Facebook!
http://www.facebook.com/pages/Temple-
Beth-El/115816285166004
(It is open for all to see!)
**If you are on Facebook already, find
our page, click “Like” and join us in
our Facebook community!**

**Bricks for the Biblical Garden and
Brick Walkway**

**Please consider ordering one to mark that
special occasion of your own or a loved
one. Call Dee Cook or Alison Mann, and
they will send you the form and even help
you design the brick, if
you wish. And take a
few minutes to sit in the
meditation area of the
walkway...it’s a lovely
spot!**



**Honor the memory of loved ones with a
memorial plaque and mark
celebrations and milestones
(and also the memory of
friends and family) by
adding leaves to our Tree of
Life.**



Adelante Submissions:

As we continue another busy year, I need your help more than ever. This newsletter is so much better when it has many voices (that and I am horrible at remembering to take pictures). Send me your pictures of family Shabbat or Temple events, book recommendations, recipes, illustrations, etc. I will share as many as space allows in each month’s Adelante. Please send pictures in JPG and files in .doc format.

The deadline for turning in articles, items and photos for the September 2024 Adelante is August 20, 2024. Late items may not be included. Please keep to that schedule to facilitate a timely completion of the Adelante! All content can be e-mailed to me, Beth Tierney at cambrien73@gmail.com

**Peace of Mind
Pet Sitting**

Sharon (774) 249-5698- Call or Text
stlucia777@yahoo.com

Overnights/Drop Ins, Housesitting
Las Cruces & Surrounding Areas

Erich Zameret, B.S., M.S., M.A.
Will tutor:
Hebrew- reading and conversational,
High School Math.
Privately or in small
group
ezmrt35@yahoo.com

Ron Bruder
ASSOCIATE BROKER
ronbruder@topproducer.com
Cell: 575-312-7330
Office: 575-522-3698

Steinborn & Associates
Real Estate

AUGUST 2024

Sun	Mon	Tue	Wed	Thu	Fri	Sat
				Tammuz 26 1 "Forgive for Good" 10 am-12 pm ADL-El Paso Re- members Event 5:30-7 pm @ Cen- tral Plaza in El Paso	Tammuz 27 2 "First Friday" Shabbat Services 6:30 pm	Tammuz 28 3 Talmud Study 9:00 am Shabbat Service 10:30 am
Tammuz 29 4	Av 1 5	Av 2 6	Av 3 7	Av 4 8 "Forgive for Good" 10 am-12 pm Sisterhood Council Meeting time TBA	Av 5 9 Kabbalat Shabbat Services 6:30 pm	Av 6 10 Shabbat Service 10:30 am
Av 7 11	Av 8 12	Av 9 13 Short Story Group 11:30 am via Zoom <i>Tisha B'Av</i>	Av 10 14 Tanakh study 10:15 am via Zoom	Av 11 15 "Forgive for Good" 10 am-12 pm Board of Trustees Meeting 6:00 pm	Av 12 16 Kabbalat Shabbat Services 6:30 pm	Av 13 17 Talmud Study 9:00 am Shabbat Service 10:30 am
Av 14 18	Av 15 19	Av 16 20	Av 17 21 Tanakh study 10:15 am via Zoom	Av 18 22 "Forgive for Good" 10 am-12 pm	Av 19 23 Kabbalat Shabbat Services 6:30 pm	Av 20 24 Talmud Study 9:00 am Shabbat Service 10:30 am
Av 21 25 Religious School Open House 10 am-12 pm	Av 22 26	Av 23 27 Short Story Group 11:30 am via Zoom	Av 24 28 Tanakh study 10:15 am via Zoom	Av 25 29 "Forgive for Good" 10 am-12 pm	Av 26 30 Kabbalat Shabbat Services 6:30 pm	Av 27 31 Talmud Study 9:00 am Shabbat Service 10:30 am

3980 Sonoma Springs Avenue
Las Cruces, NM 88011

Phone: 575.524.3380
Fax: 575.521.8111
admin@tbelc.org

President:
Diane Fleishman

Rabbi:
Evette Lutman

Rabbi Emeritus:
Lawrence P. Karol

The Temple Beth-El Newsletter is produced regularly at Las Cruces, New Mexico. Editor: Beth Tierney. Copy Editors: Nan Rubin, Rabbi Larry Karol, Aggie Saltman, Steven Haydu and Alison Mann. We welcome Adelante sponsorships by or for Temple members and non-members. Sponsorships can be mailed to the Temple; receipts are provided upon request. We reserve the right to edit all sponsorships. Non-member sponsorships (with no ad) are \$25/year. Annual sponsorship rates are as follows: 2x3 business card \$150 (free for members); Quarter page \$300; Half page \$600. For information about sponsorships, please contact the Temple Office.

**Temple Beth-El and “Adelante” are on the web at
www.tbelc.org
The temple also has a Facebook Page:
Temple Beth-El Las Cruces**

August 2024



**Temple Beth-El
3980 Sonoma Springs Avenue
Las Cruces, NM 88011**