



A Monthly Publication for Temple Beth-El,
Las Cruces, New Mexico

DECEMBER 2025 (KISLEV-TEVET 5786)

Temple Beth El presents:

The 2nd Annual Artisan Marketplace

Shop for unique, handcrafted
creations directly from local artists!

Sunday, December 14
10am - 4pm

3980 Sonoma Springs Ave
Las Cruces, New Mexico

We're thrilled to feature the stunning paintings
by renowned artist

Annetta Hoover

available for both viewing and purchase.

Sisterhood Gift Shop - Hanukkah Open House December 7 from 10am-1pm

Menorahs

Candles

Chocolate
Gelt

Gifts
Galore



Prefer to shop by appointment? Call Lenore at 575-888-4644

General Worship Schedule

Can't come in person? Then join us on Zoom or Facebook Live.

You can watch on Facebook using this link:

<https://www.facebook.com/pages/category/Synagogue/Temple-Beth-El-115816285166004/>

Zoom invites for all services, and any text to follow, will be sent out weekly.

If you do not have a siddur at home, you can purchase a print copy or an e-book, (less expensive option) which can be viewed on any device using the free Kindle App. These can be bought from the Central Conference of American Rabbis at this link

<https://www.ccarnet.org/publications/mishkan-tfilah-for-Shabbat/>

Kabbalat Shabbat Services:

Friday, 6:30 pm

Saturday Morning Services:

10:30 am

Times will occasionally vary.

See calendar for current schedule.

BOARD OF TRUSTEES 2025-2026

President-Deb Leyndyke

Vice-President-Jeff Lewis

Secretary- Sheri Spiegall

Treasurer- Susan Weissman

Martha Roditti Donna Popky Steve Haydu

Wendee Lorbeer Daniel Azizian Gilan

Kimmi Cravens – Sisterhood Rep

Bill Stein—Mensch Club Rep

Classes/ Adult Education

Tai Chi- Tuesdays at 10:30 am

Led by Steve Haydu

(Donations support TBE)

Talmud Study– Saturdays at 9:00 am

Lay led by Bryan McCuller.

Short Story Group– Every other Tuesday at 11:30 am via Zoom

This is a discussion group led by former congregant Jim Rosenthal. Jim e-mails stories by Jewish authors to participants each week.

To join, contact Jim at jar529@gmail.com.

Adult Biblical Hebrew– Sundays at 2:00 pm.

Led by Cantor Linda Sweenie.

(Final Class Dec. 7)

Adelante Submissions:

I need your help! This newsletter is so much better when it has many voices (that and I am horrible at remembering to take pictures). Send me your pictures of family Shabbat or Temple events, book recommendations, commentary, recipes, illustrations, etc. I will share as many as space allows in each month's Adelante. Please send pictures in JPG and files in .doc format.

The deadline for turning in articles, items and photos is the 20th of each month (unless otherwise stated). Late items may not be included. Please keep to that schedule to facilitate a timely completion of the Adelante! All content can be e-mailed to me, Beth Tierney at cambrien73@gmail.com

A Word From Our New Treasurer

Hello! I'm Susan Weissman, a relatively new member of Beth-El.

After joining the Board of Directors, I became Treasurer when Mark Singer stepped down due to health concerns. (He is doing well, but wanted to reduce his responsibilities to focus on his health and well-being.)



While getting up to speed on all things financial for Beth-El, I discovered that it's simple to pay our membership dues or make a one-time donation online. Do you know how to do it? It's easy—just visit our website at tbelc.org and click on "Donate" in the drop down menu on the right. You can contribute via credit card or direct deposit (ACH).

I'm very happy to be part of this community and truly appreciate how warm and welcoming everyone has been. I look forward to contributing what I can as we move forward. If you have any questions about dues or donations, or if there's anything I can assist you with, please feel free to contact me at 314-570-6709 or sweissman56@gmail.com.

"Have you considered a bequest to Temple Beth-El?"

An important part of our future is represented by bequests made by members.

Thoughtful bequests enable Temple Beth-El to retain a future of Jewish life for generations to come.

From funding our Rabbi to scholarships at our religious school, your generous gift maintains our financial health.

A simple codicil can be added to your existing will, if you wish to make a bequest, such as:

"I give and bequest to Temple Beth-El, located in Las Cruces, New Mexico, the sum of \$_____ [or _____ percentage of my estate as finally determined for federal estate tax purposes]."

A will or codicil should be prepared by an attorney.

Please call the Temple office at (575) 524-3380 to discuss including Temple Beth-El in your estate.

Celebrating our Simchas

The Temple Beth-El Mitzvah Team sends best wishes to these members celebrating birthdays this month:

Karen Currier, Aaron Hyman, Debbie Levy, Michael Mandel, Stan Muchnikoff, Ron Pierce, Beth Tierney, Jamie Tierney

The Temple Beth-El Mitzvah Team sends best wishes to these members celebrating anniversaries this month:

None Known

We would love to have more names on these lists.

If you would like to have us acknowledge your occasion in the future, please send birth month, and anniversary month, to admin@tbelc.org (This is especially relevant as I have lost the file which had the updates for the past two years –Beth)

The Mensch Club donated \$300 to Casa De Peregrinos. In addition, other donations brought the total donated to \$ 709.

Thank you Gary Levy, the Mensch Club, and an anonymous donor. The Mensch Club cares about our community.



Donations through November 24, 2025

General Fund:

Jeff and Avis Lewis, in memory of Beverly Lewis
 Harry and Diane Bass, in honor of Luke Duddridge and Mark Singer
 Jack Greenspan, in memory of Peggy Cook Greenspan
 Jeff Brown and Cherri Hudson-Brown, in memory of Ira J Hudson III
 Jane Grider, in memory of Dr. Clarence Lathrop
 Nancy Bergman
 Daniel and Simy Allan, in memory of Evelyn Benowitz
 Bill and Susan Michelson, for security
 Tai Chi participants
 Georgette Malooly, in honor of Alison Mann's Mah-Jong class
 Marjorie Siegel, in honor of Linda Sweenie
 Susan Weismann, in honor of Linda Sweenie and her leadership
 Mark and Aggie Saltman

Temple Beth-El Youth Fund:

Jeff and Avis Lewis, car wash
 Jeff Brown and Cherri Hudson-Brown, in memory of Dolly Zabin

Social Action Fund:

Anonymous

Yizkor Fund:

Ari Swartz, in memory of Carrie Swartz and Richard Garner

Rabbi Discretionary Fund:

Stan and Gerie Muchnikoff, in memory of Etta Muchnikoff
 Brenda and Arlon Parish, in memory of Mary Lois Gardner

Temple Beth-El Religious School Fund:

Nancy Bergman

Religious Practices Fund:

Tom and Debbie Levy, in memory of Lily Klein-Pinkes, Charles Klein, and Lillian Klein

Temple Funds

Donations are gratefully accepted for the following:
General Operating Fund—For the day-to-day operation of TBE.

Biblical Garden Fund—To provide the infrastructure for biblical plants and trees, and bricks in the fountain meditation area and on the brick walkway.

Rabbi Larry and Rhonda Karol Campership Fund—Providing scholarships for Temple students to attend Jewish summer camp programs.

The Mitzvah Team Fund—to assist this voluntary team of Temple Beth-El members that, upon request and dependent upon availability, will provide non emergency support service to members of the temple.

Social Action Fund—For projects that benefit our community and Las Cruces and Southern New Mexico.

Irving Batkin Memorial Scholarship Fund—To broadly support Jewish education, based on merit or need, through participation in the TBE Religious School, camperships, and/or pursuit of Jewish collegiate studies or rabbinical studies.

Frances Williams Library Fund—To provide books and infrastructure for the TBE library.

Rabbi Gerald M. Kane Fund—Provides funds to help further adult education and cultural programming at TBE.

Temple Beth-El Religious School Fund—Supports the regular and special programming planned by faculty, students and the Religious School Committee.

Temple Beth-El Youth Fund—Support for Youth activities at TBE.

Rabbi's Discretionary Fund—Used to meet a variety of philanthropic requests as well as to supplement TBE programs.

Ritual Items Fund—For repair and maintenance of ritual items used during services such as Torahs, Tallitot and the like.

Periodically the temple may list short-term projects or needs. Contributions that do not specify a project or fund will be added to the General Operating Fund. If you have a question or wish to contribute to a project not listed here, please contact our Temple Beth-El Treasurer, Mark Singer.

Yahrzeits-- December 5, 2025- January 3, 2026

Listings include the name of the loved one on the yahrzeit list and (in parentheses) the name of the congregant or congregants remembering that loved one - asterisks indicate loved ones remembered with memorial plaques.

Read on December 5 & 6, 2025

Roz Sugarman (Stan & Gerie Muchnikoff)
 Bob Abkes (Jeanne & Marieka Brown)
 Vernella Ross Griffin (Nicole & Jermel Griffin)
 Meyer Siegel (Joel Siegel)
 Stanley S. Bergman* (Nancy Bergman & Greg Artman)
 Ida Weinstein Epstein (Marlene Benz)
 Mary Sisson (Lester & Renee Frank)
 Sol Podolsky (Rosalyn Richman)
 Celia Greenberg (Cyrille S. Kane)
 Samuel Goldman (Jerald & Rochelle Silverman)

Read on December 12 & 13, 2025

Daisy Chapman (Diane Fleishman)
 Charles Klein (Tom & Deborah Levy)
 Lily Klein Pinkes (Tom & Deborah Levy)
 Peggy Cook-Greenspan (Jack Greenspan)
 William Silberman (Cyrille S. Kane)
 Tovah Zameret (Elaine & Erich Zameret)
 Ruth Rubin*
 Samuel David Goldberg (Richard & Darlene Goldberg)

Read on December 19 & 20, 2025

Leona S. Green (Rosalyn Richman)
 Helen Isaacs (Linda M. Kruger)
 Marion Ellis Bairnsfather (David Newman & Jon Bairnsfather)
 Florence Kaye (Susan Quinn)
 Gary Mann (Alison Mann)
 Eleanor Goldman (Jerald and Rochelle Silverman)

Read on December 26 & 27, 2025

Etta Muchnikoff (Stan & Gerie Muchnikoff)
 Mattie Eva Tombs Smith (David Newman & Jon Bairnsfather)
 Jerome Deutschman* (Ellen & Alfred Torres)
 Jermaine Griffin (Nicole & Jermel Griffin)
 Lillian Klein (Tom & Deborah Levy)

Read on January 2 & 3, 2026

Sonia Silverman (Jerald & Rochelle Silverman)
 Susan Lapid (Yosef Lapid)
 Sylvia Weiss* (Harry & Diane Bass)
 Virginia Katherine Hightower Smith (David Newman & Jon Bairnsfather)
 Sam Ross (Irwin & Barbara Ross)
 Charles Lipsitz (Rosalyn Richman)
 Ilona Farkas* (Yosef Lapid)
 Henry Greenberg (Cyrille S. Kane)
 Ira Hudson III (Jeff Brown & Cherri Hudson-Brown)
 Edward Friedman (Mark & Stefani Singer)

In order to ensure that the name of your loved one will be recited during services, we have instituted the following practices:

The Hebrew dates for each week's Yahrzeits are listed in each Adelante.

*Names are read on the Shabbat **following** the Yahrzeit, or on the day, if it falls on that Shabbat.*

Hebrew vs. conventional (Gregorian) calendar:

The temple's tradition is to base the Yahrzeits list on the Hebrew calendar. Those who wish to have a name read on a Friday night close to the conventional (Gregorian) calendar date are asked to please email admin@tbelc.org or call the Temple office.

**Asterisks indicate that a loved one has been permanently memorialized with a plaque in the Temple sanctuary. If you are interested in acquiring a plaque for your loved one, contact the Temple office. Current TBE members may purchase a plaque for \$360.*

Non TBE members may purchase a plaque for \$660.

Seeds in the Ashes

A year in allegory by Meir Ashan, art by Robert Kitcey

Beneath the palace walls, lies a village where ordinary lives are made from extraordinary moments. Farmers, merchants, shepherds, and watchmen write their lives among the fields and rows. These are their stories — tales woven of soil, silence, and song, within each season is sown a hidden truth for any with the eyes to see.

For Kislev: The Hidden Flame



Nights had grown long. The hills that gleamed in autumn light now lay beneath a heavy dusk that seemed reluctant to lift. The villagers lit their lanterns earlier each day, yet even their glow seemed swallowed by the season. Shadows clung to the corners of houses like cobwebs, and the air tasted

of frost.

Dinah, the merchant—her name meant judgment—sat alone at her table. Scrolls and ledgers lay piled before her, each line a measure of gain and loss. She traced her numbers with tired fingers, whispering them aloud as if repetition might conjure more than what was written. But no matter how she tallied, her accounts filled her with unease. In her heart, she found herself lacking — like she might never be good enough. Her candle guttered low. She rubbed her eyes and sighed. The mood was shattered by the pitter and patter of footsteps. Orli, the child—her name meant my light—paused in her doorway, cheeks flushed from the chilly evening air. She held no ledger, no jar, no task, simply a smile that brightened hearts.

“Dinah,” Orli said, “come outside. The night is full of sparks!”

Dinah frowned. “There are no sparks,” she replied, “only frost. Do you not see the darkness pressing on us?”

But Orli’s eyes shone. “I see what you do not. Come!” Against her judgment, Dinah sighed and followed the child into the fields. The lantern Orli carried was small and its flame weak, swaying and flickering in the wind of her swinging it. Dinah drew her cloak tight. “This is folly. I have work left unfinished.”

But Orli pressed on, leading her between the furrows. The ground crunched beneath their feet, brittle with frost. The night seemed endless, but Orli walked with confidence, as if guided.

At last, Orli stopped. She knelt in the cold earth and pointed. “Here!” Dinah peered down. Only frost lay on the soil, white and lifeless. She shook her head. “You bring me here to mock me? There is nothing here child!”

Orli touched the ground. Her small hand brushed the frost until it shimmered faintly in the lantern’s glow reflected and refracted by the crystals. To Dinah’s eyes, it looked as though embers hid beneath the ice, flickering softly. She leaned closer. Was it only her imagination, or did warmth rise faintly from the soil?

“See?” Orli whispered. “Not all flames roar. Some hide, waiting to be noticed.”

Dinah’s breath caught as she beheld the catch-light from the lantern reflecting from Orli’s eyes. Dinah realized she had somehow become so accustomed to measuring worth all her life in tallies—how much gained, how much lost? Yet here was a flame no ledger could contain, faint but real. She felt it stir warmth in her chest.

She crouched beside Orli, extending her hands. The frost melted against her palms, releasing a vapor like breath in winter air. The faint glow clung to her skin, as if the earth itself entrusted her with its hidden fire.

Tears suddenly pricked Dinah’s eyes. She could not explain what she felt, only that her long hunger for light was answered not by a blazing torch but by this quiet ember in Orli’s eyes.

Eventually, they rose and walked back together. The lantern burned no brighter than before, but Dinah’s steps felt lighter. The shadows of the village no longer seemed so heavy.

The next morning, Dinah opened her shop as usual. Customers came and went, bringing coins, fabrics, and goods. Yet she noticed something new. A weary farmer’s cracked hands, a widow’s worried eyes, a child’s patched cloak—each carried a weight no ledger could measure. She found herself pausing to look, to listen, to offer warmth not counted in scales or sums.

"Seeds in the Ashes"- continued from previous page

That night, when Dinah sat again at her table, the ledgers no longer pressed as heavily upon her. The candle's flame seemed steadier, and her chest carried a warmth not from wax or oil but from the ember she had cradled in the frost while kneeling with little Orli – full of life and wonder. Days passed, and winter deepened. The nights stretched longer, and the winds and rain howled over the hills. Yet within the village, small flames appeared—children's laughter at the well, neighbors singing as they mended walls, the King himself walking among them, greeting each with simple words of kindness – each adding a little light to the other.

Dinah noticed each of these moments as sparks against the darkness. She found herself whispering Orli's words: Not all flames roar. And when she walked home through the night, she lifted her eyes to the sky. Even the stars seemed little brighter than before, scattered like embers across the heavens, each with its own secret fire.

And so, the village remembered, and the fields sustained them.

Author's Note:

This tale was kindled in the hush of Kislev, when the nights stretch long and flames hide low. The Hidden Flame began as a meditation on worth—how we measure and often overlook it, and how it sometimes flickers in places we've forgotten to look.

Dinah's journey is not one of conquest, but of discovery. Her ledgers do not betray her, but they also cannot hold what matters most. It is Orli's child eyes, and her lantern, small and swaying, that leads her beyond the frost into something warmer than fire: presence, wonder, and the quiet trust that light does not need to roar to be real. I wrote this in the season of concealed sparks, when the oil burns low and the stars seem distant. It is my hope that this story might offer a moment of pause—a breath drawn beside the ember, a reminder that warmth may rise even from cold soil.

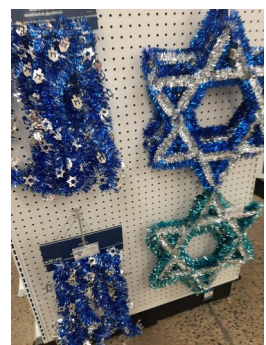
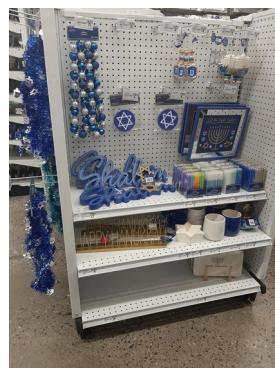
If you find yourself kneeling in these pages, may that kneeling be a prayer. Not for certainty. But for light enough to navigate.

Temple Beth-El Board of Trustees Meeting Summary, November 20, 2025

At their November 2025 meeting, the Board of Trustees was pleased to welcome new member Daniel Azizian and returning member Steve Haydu. Donna Popky stepped up to fill the Membership Chair role that Debbie Leyndyke vacated when she became President. Susan Weissman has taken on the role of Treasurer as Mark Singer stepped down. Susan is organizing and updating fund holders for the various checking accounts. Jeff Lewis stepped down as Vice President but will continue with his many duties as lead of the Mensch Club. Many board members attended a URJ Leadership Bootcamp in October and learned new skills and approaches. We will attend a follow up session with URJ leadership tailored to our goals for the coming years. Board members will make a systematic plan to attend Friday night services to greet and facilitate safety. The board voted unanimously to join the Jewish Community Relations Coalition of New Mexico.

Sheri Spiegel, Secretary

Because Representation Matters...the Hannukah endcap at Michael's



Cantor's Notes

November brought a number of changes in leadership here at Temple Beth-El. Our Temple President, Diane Fleishman, stepped down to move closer to family in Pennsylvania, and Mark Singer resigned from his Treasurer position to focus on his health. Fortunately for all of us, a group of dedicated people stepped forward to fill those positions with a resounding "hineini – here I am." Our new Board President, Debbie Leyndyke has hit the ground running, arranging for Board training through the URJ, and bringing strong and forward-thinking leadership to the position. Susan Weissman has stepped in to fill the all-important Treasurer role, bringing strong skills based on years of experience running her own marketing firm. Donna Popky took over leadership of the Membership Committee – a key role as we continue to grow our congregation. And we added two new Board members -- Steve Haydu and Daniel Azzizan – replacing those who stepped down and bringing fresh ideas and perspectives to the group. But along with dedicated lay leadership to handle the business of the congregation, there needs to be accessible and competent spiritual leadership to maintain the holy work of the community. I am happy to report that the members of the Temple search committee are making great progress towards that goal. We posted for our Spiritual Leader position in September, right before Rosh Hashana. From that, we had 9 responses that netted formal applications from 5 highly qualified individuals. We requested additional materials from all of them and are now currently reviewing those. We will meet in early December to determine which of those 2-3 candidates we will interview over ZOOM, hopefully conclude those interviews by mid-December and then invite one or two of them to visit the Temple over a Shabbat to lead services and interact with the congregation to see if there is a good fit. Our hope is to complete the process by early January and have a permanent Spiritual Leader in place here shortly thereafter.

In the meantime, I continue to be grateful to all of you for the incredible support I've been given during my tenure of interim leadership. I hope to see everyone for our annual Congregational Menorah Lighting on Friday evening, December 19 and wish all of you a Happy Hannukah and a joyous secular New Year.

B'shalom,
Linda Matorin Sweenie

A fond farewell to our past Temple President, religious school teacher and friend, Diane Fleishman. We wish you every happiness.





NMJHS Research Fellowships: Call for Applications

As we celebrate our 40th Anniversary in 2025, we continue to honor the vision of our founders - historians and community members passionate about preserving and sharing the unique history of Jewish New Mexico from the 1600s onward.

We're proud to announce the Call for Applications for two Research Fellowships in 2026, one funded by NMJHS and another generously supported by an anonymous donor.

The full details, including eligibility and submission guidelines, are outlined in the [Call for Applications here](#). Applications are due January 1, 2026.

For questions or more information, please contact Naomi Sandweiss-Willie, whose details are listed in the Call for Applications.

[Research Fellowship: Call for Applications](#)



[Our Company](#) | [Contact Us](#) | [FAQs](#) | [Privacy Policy](#)



Tai Chi

Tuesday

mornings at 10:00

Led by Steve Haydu

Donations to the

Temple accepted as

payment for classes.

Sisterhood Update

Welcome to December! The year 2025 is roaring toward the end at breakneck speed! As I write today, the temps are brisk and chilly, the sun is out and the sky is a crystal clear blue. Chanukah shopping is now, ladies, so check out all the new merch at the TBE Sisterhood Gift Shop. Contact Lenore Hindin for shopping opportunities or to meet you at the temple for personal browsing.

With Chanukah coming up, Sisterhood is putting out the request for home made latkes for the Congregational Chanukah celebration on December 19 at 6:30 pm. Please contact any of your Sisterhood council members to volunteer to bring your delicious latkes! Thank you so much. The love of latkes means we need loads of them!!! If you can offer sour cream, applesauce, jelly donuts, we would be delighted!

Sisterhood is working on events for the new year. We loved Hot Soup and Cool Books last February, so we are bringing it back. Watch for flyers and information in January. We are looking for a speaker for the same afternoon.

Sisterhood has agreed to donate \$300 to Casa de Peregrinos. They love getting food donations, but MONEY is much appreciated.

The weekend of January 9th, there is a weekend gathering of Sisterhoods from the Southwest. Four of us attended about a year or two ago. It was wonderful meeting Sisterhood members from Albuquerque, El Paso, Phoenix and Las Vegas. The workshops were informative and enjoyable. We would love to have another four or five of us attend and represent Las Cruces. For more information, contact Stefani Singer. We need to register by December 19th.

Sisterhood Council welcomes new member, Beth Waters. If you know of anyone who needs a get well wish, please contact Gerie Muchnikoff, our new official get well wisher on behalf of your Sisterhood.

Stay healthy, safe and warm through the holiday season. - Stefani Singer

Celebrate Hanukkah at TEMPLE BETH-EL

Friday, December 19

6:00pm

Latkes

6:25pm

Menorah Lighting

6:30pm

Worship

(Bring your Menorah & 7 Candles)



Camp Hope Christmas Breakfast

Temple Beth-El's Annual Camp Hope Christmas Breakfast is less than a month away. We've been planning for a while and a big part of that planning has been taking the advice offered by Linda Sweenie at High Holiday Services. Our small group has been putting on this event for many years and its time to start handing over the reins to some new folks. Some of us are tired and we all recognize that our knowledge needs to be passed on to the next group of willing hands and hearts. So this year, along with our usual request for financial donations, we're also looking for volunteers who can be "shown the ropes". We'll need folks who are interested in the logistics of getting everything we need to and from the Temple, cooks, folks who can fill in as needed during the course of the event. And we'll need some organizers who can sit in with us during our next planning meetings to see who we go about getting it all together. It's a work in progress and changes from year to year as we find better ways to do things or the situation changes at Camp Hope.

We realize that our congregation has been incredibly generous in its support of Camp Hope already this year and we hope you can find your way to making one more donation. You can drop them off at the Temple or mail them to:

Temple Beth-El
3980 Sonoma Springs Ave
Las Cruces, NM 88011

If you would like to be one of our "trainees" please contact Terri Sugarman at [806-231-5413](tel:806-231-5413) or Susan Fitzgerald at [575-405-1739](tel:575-405-1739). At this point, there is a tentative plan to get together for a working session at the Temple late in the afternoon of the 24th to prepare and load what we need from the Temple followed by a general overview of what happens on the day of the event.

And then we'll have pizza! Our "committee" looks forward to welcoming new people and to all of the more than generous donations that come from four congregants.



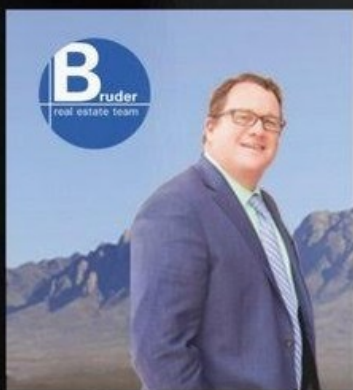
Hello to all our friends in Las Cruces, Alamogordo, Anthony, Chaparral, Sunland Park, Hatch, Deming, and El Paso, TX! Dealing with car troubles on the road? No need to stress – we've got your back!

Citizens Choice Roadside Assistance is here for you during any roadside emergency. Whether it's a flat tire or your car won't start, just give us a call.

Visit our website at <https://citizensroadside.com/> to learn more.

Drive safely out there!

#CitizensChoiceRoadsideAssistance #RoadsideAssistance



ron bruder
associate broker

ronbrudertopproducer@gmail.com

Cell: 575-312-7330
Office: 575-522-3698



STEINBORN
& ASSOCIATES

**Erich Zameret, B.S.,
M.S., M.A.**

Will tutor:

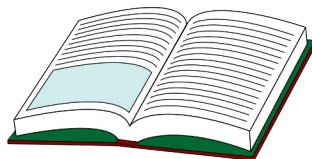
Hebrew- reading and
conversational,

High School Math.

Privately or in small group

ezmrt35@yahoo.com

575-639-0785



Bricks for the Biblical Garden and Brick Walkway

Please consider ordering one to mark that special occasion of your own or a loved one. Call Alison Mann, and she will send you the form and even help you design the brick, if you wish. And take a few minutes to sit in the meditation area of the walkway... it's a lovely spot!



**Visit the Temple Beth-El Website—
www.tbcl.org
for in-depth information about Temple
and its programming and updates on
current Temple events**

Temple Beth-El is on Facebook!
[http://www.facebook.com/pages/Temple-
Beth-El/115816285166004](http://www.facebook.com/pages/Temple-Beth-El/115816285166004)

(It is open for all to see!)

**If you are on Facebook already, find our
page, click “Like” and join us in our
Facebook community!**



Peace of Mind
Pet Sitting

Sharon (774) 249-5698- Call or Text
stlucia777@yahoo.com

Overnights/Drop Ins, Housesitting
Las Cruces & Surrounding Areas



**Honor the memory of loved
ones with a memorial
plaque and mark
celebrations and milestones
(and also the memory of
friends and family) by
adding leaves to
our Tree of Life.**



December

Sunday	Monday	Tuesday	Wednesday	Thursday	Friday	Saturday
Nov 30	1	2	3	4 Sonoma Ranch HOA mtg. 6:00 pm	5	6 Talmud Study 9:00 am Shabbat Service 10:30 am
7 Hanukkah Gift Shop Open House 10:00 am-1:00 pm Religious School 10:00am-12:00 pm Youth Hebrew 12:00-1:00 pm Adult Biblical Hebrew 2:00 pm	8	9 Tai Chi 10:00 am	10	11 TBE Board Meeting 6:00 pm	12 Kabbalat Shabbat Services 6:30 pm	13 Talmud Study 9:00 am Shabbat Service 10:30 am Artisan Marketpace Set-up 12:30 pm
14 NO RELIGIOUS SCHOOL/YOUTH HEBREW Artisan Marketplace 10:00 am-5:00 pm Chanukah 1 st night	15	16 Tai Chi 10:00 am	17	18	19 Hanukkah Celebration 6:00 pm Latkes 6:25 pm Menorah lighting 6:30 pm Services	20 Talmud Study 9:00 am Shabbat Service 10:30 am Las Cruces Havurah 4:00 pm
21 NO RELIGIOUS SCHOOL/YOUTH HEBREW		23 Tai Chi 10:00 am	24	25	26 Kabbalat Shabbat Services 6:30 pm	27 Talmud Study 9:00 am Shabbat Service 10:30 am
28 NO RELIGIOUS SCHOOL/YOUTH HEBREW	29	30 Tai Chi 10:00 am	31	Jan 1 Thanksgiving	Jan 2 First Fiesta Friday: Taco Dinner 5:45 pm Musical Worship 6:30 pm	Jan 3 Talmud Study 9:00 am Shabbat Service 10:30 am
Jan 4 NO RELIGIOUS SCHOOL/YOUTH HEBREW	Jan 5	Jan 6 Tai Chi 10:00 am	Jan 7	Jan 8	Jan 9 Kabbalat Shabbat Services 6:30 pm	Jan 10 Talmud Study 9:00 am Shabbat Service 10:30 am

Temple Beth-El, Las Cruces, New Mexico

DECEMBER 2025 (KISLEV-TEVET 5786)

3980 Sonoma Springs
Avenue
Las Cruces, NM 88011

Phone: 575.524.3380
Fax: 575.521.8111
admin@tbelc.org

President:
Deb Leyndyke

Interim Spiritual Leader:
Cantor Linda Sweenie

The Temple Beth-El Newsletter is produced regularly at Las Cruces, New Mexico. Editor: Beth Tierney. Copy Editors: Aggie Saltman, Steven Haydu. Linda Sweenie, Ellen Torres and Alison Mann. We welcome Adelante sponsorships by or for Temple members and non-members. Sponsorships can be mailed to the Temple; receipts are provided upon request. We reserve the right to edit all sponsorships. Non-member sponsorships (with no ad) are \$25/year. Annual sponsorship rates are as follows: 2x3 business card \$150 (free for members); Quarter page \$300; Half page \$600. For information about sponsorships, please contact the Temple Office.

**Temple Beth-El and “Adelante” are on the web at
www.tbelc.org
The temple also has a Facebook Page:
Temple Beth-El Las Cruces**

December 2025



**Temple Beth-El
3980 Sonoma Springs
Avenue
Las Cruces, NM 88011**